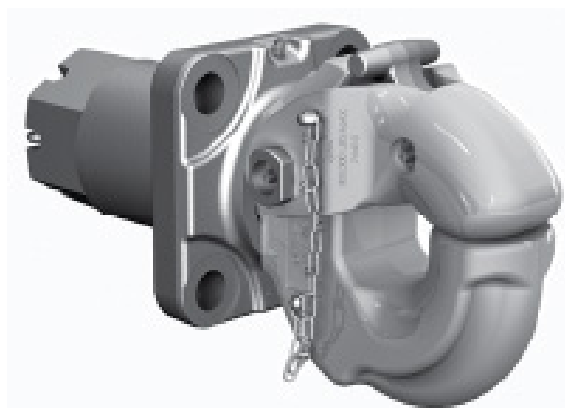


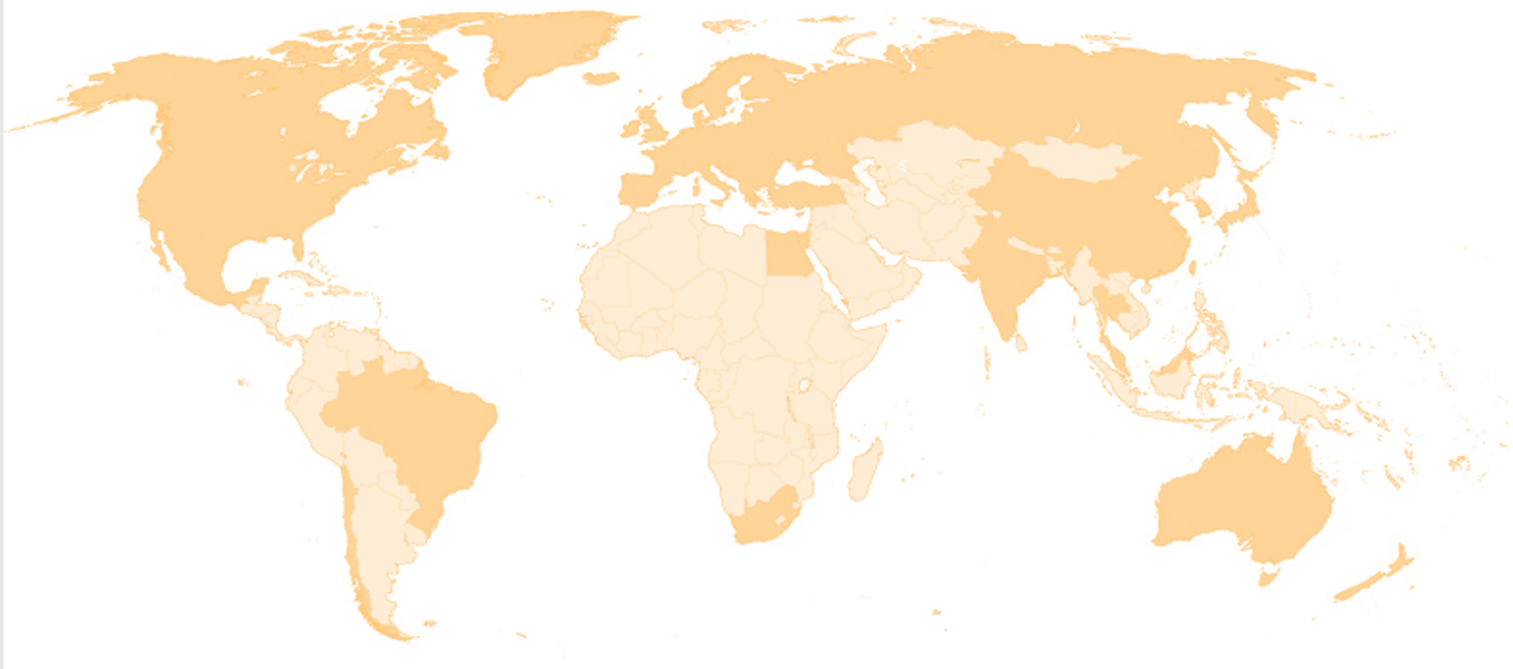
HOLLAND COUPLINGS

PINTLE HOOKS

DRAWBARS



SAF-HOLLAND



**STRONG ROOTS AND A COMMON VISION:
ENGINEERING YOUR ROAD TO SUCCESS.**



In 2006, two traditional companies merge to form SAF-HOLLAND, and become one of the leading global suppliers of high-quality axles and suspension systems, fifth wheels, kingpins, coupling products and landing gear to the commercial vehicles industry.

NATIONWIDE COVERAGE

- Melbourne
- Sydney
- Brisbane
- Perth
- Adelaide

WORLDWIDE

- 40 branch offices
- 20 sales centres
- 3,838 service centres

17 production locations overseas

- Europe
- North America
- Canada
- Brazil
- China

Alongside original equipment manufacturers (OEM) and original equipment suppliers (OES), our customers also include forwarding companies and service centres. Today, SAF-HOLLAND is represented on all continents and distributes its products under the brand names SAF and Holland through its own distribution network and a global service and retailer network. In addition, we also have our own research, development and test departments at all our facilities.

With our components and systems, we are able to offer first-class products and exemplary service – perfect problem solutions for trucks, trailers and buses.

www.safholland.com.au





BH50MMRN41

50mm (2") DIAMETER BALL RIGID MOUNT - DUPLEX

CAPACITY:

- 20 kN D-Value
- CRN 46665
- Weight 4.5 kg (10 lbs.)
- Pintle Hook:
 - 1,800 kg (3,968 lbs.) Maximum Vertical Load
 - 9,000 kg (19,842 lbs.) Maximum Gross Trailer Weight
- 50mm Ball:
 - 4,540 kg (10,000 lbs.) Maximum Gross Trailer Weight

NOTE: For off-road applications, reduce the above capacities by 25% and use with a swivel-mount drawbar.

Tested in accordance with SAE J847 (Type II) and ADR 62/02.

Meets J684 Class 4 standard for a 50mm ball.

WARRANTY:

- 12 Months Materials and Workmanship Warranty

APPLICATION:

A rigid mount pintle hook that combines a pintle hook and ball hitch. Designed for customers who need the strength and capacity to pull trailers equipped with drawbars, as well as the flexibility to pull trailers with a 2" or 50mm ball hitch.

DRAWBAR EYE DIMENSIONS:

60.4mm to 76.2mm I.D. with 31.7mm to 41.4mm diameter section.

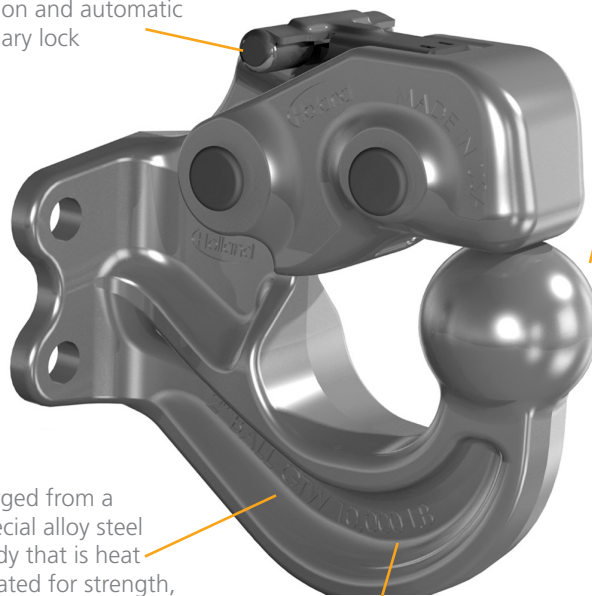
NOTE : Specifications regarding measurements and weights are nominal only. We reserve the right to make changes as necessary.

FASTLATCH- One-handed operation and automatic secondary lock

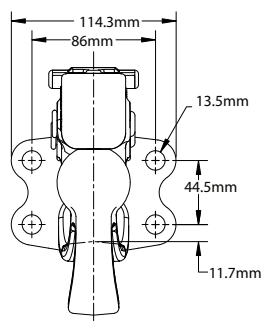
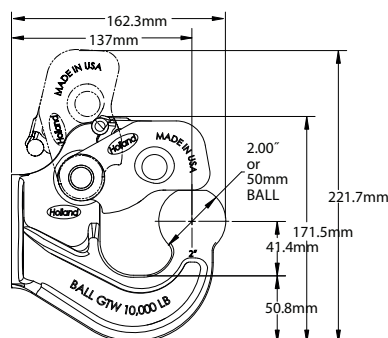
50mm ball is permanently attached. It cannot be stolen or misplaced.

Forged from a special alloy steel body that is heat treated for strength, toughness, and durability.

Our unique design is stronger and more durable than a removable ball design. The special shape eliminates premature wear typically caused by the drawbar pulling against the ball. Provides better oscillation or articulation in off-road conditions than a removable ball hitch.



MOUNTING DIMENSIONS





PHT60AOL8

RIGID MOUNT

CAPACITY:

- 35 kN D-Value
- CRN 26465
- Weight 5 kg (11 lbs.)
- 2,724 kg (6,000 lbs.) Maximum Vertical Load
- 13,620 kg (30,000 lbs.) Maximum Gross Trailer Weight

NOTE: For off-road applications, reduce the above capacities by 25% and use with a swivel-mount drawbar.

Tested in accordance with SAE J847 (Type II) and ADR 62/01.

WARRANTY:

- 12 Months Materials and Workmanship Warranty

APPLICATION:

A versatile rigid mount pintle hook designed for over-the road and off-road towing within stated capacities.

DRAWBAR EYE DIMENSIONS:

50.8mm to 76.2mm I.D. with 31.7mm to 41.4mm diameter section.

NOTE : Specifications regarding measurements and weights are nominal only. We reserve the right to make changes as necessary.

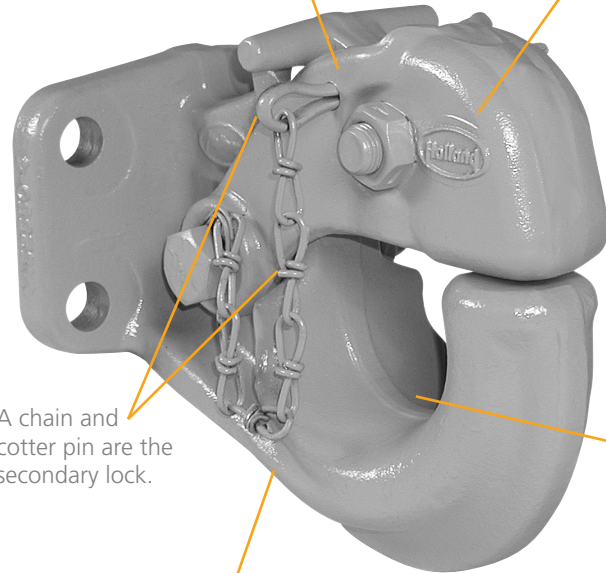
Forged from a special alloy steel that is heat treated for strength, toughness, and durability.

The latch is forged alloy steel and heat treated for strength and long life.

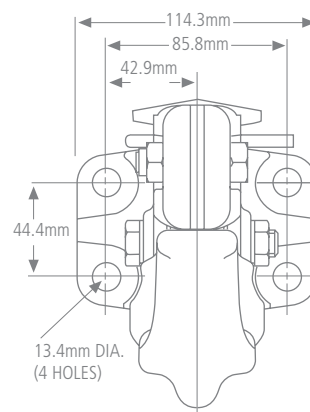
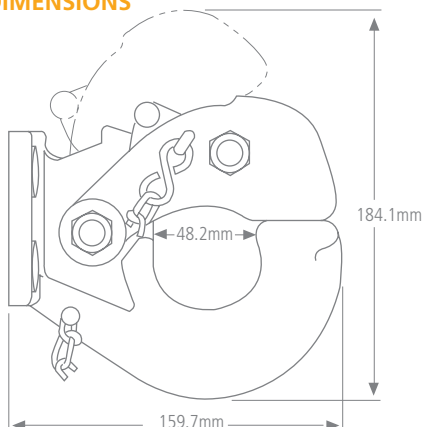
A chain and cotter pin are the secondary lock.

The special pintle body shape is designed for maximum articulation or oscillation and reduced wear.

Surfaces are machined to tight tolerances to ensure durability.



MOUNTING DIMENSIONS





PH300 / PH3001

RIGID MOUNT WITH AIR CUSHIONED SNUBBER

CAPACITY:

- 165 kN D-Value
- CRN 24295
- Weight 19 kg (42 lbs.)

The complete assembly includes a pintle body, plunger, air chamber, and mounting bracket. For pintle hooks without an air chamber, bracket, or plunger, order PH3001. The PH300 can be operated with or without the air chamber.

- 8,172 kg (18,000 lbs.) Maximum Vertical Load
- 32,688 kg (72,000 lbs.) Maximum Gross Trailer Weight

NOTE: For off-road applications, reduce the above capacities by 25% and use with a swivel-mount drawbar.

Tested in accordance with SAE J847 (Type II) and ADR 62/01.

WARRANTY:

- 12 Months Materials and Workmanship Warranty

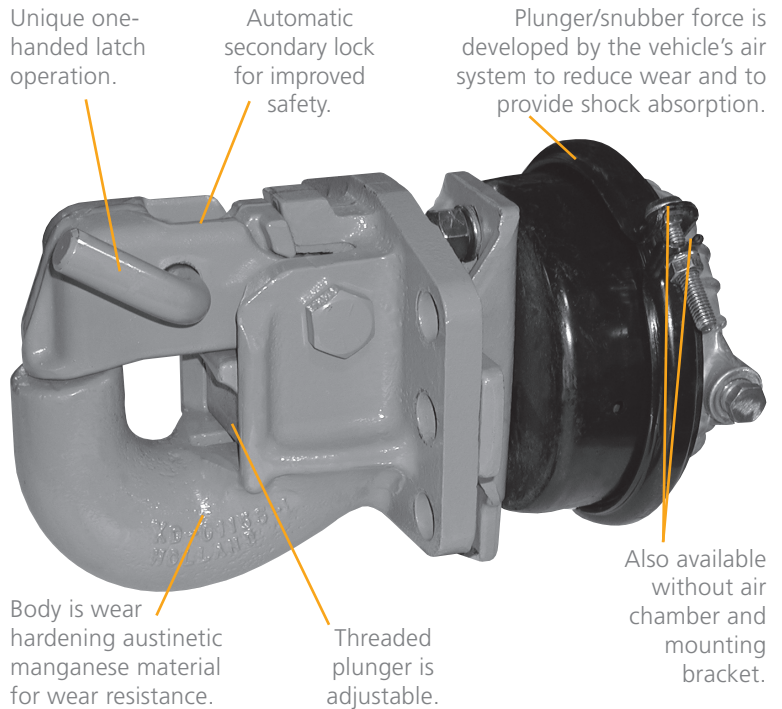
APPLICATION:

A rigid mount pintle hook designed for trailers, semitrailers, and doubles operations. Used for off-and over-the-road applications, with an air cushioned snubber, designed to minimize the space between the pintle hook and the drawbar and helps provide some shock absorption. This pintle hook is recommended for severe duty applications.

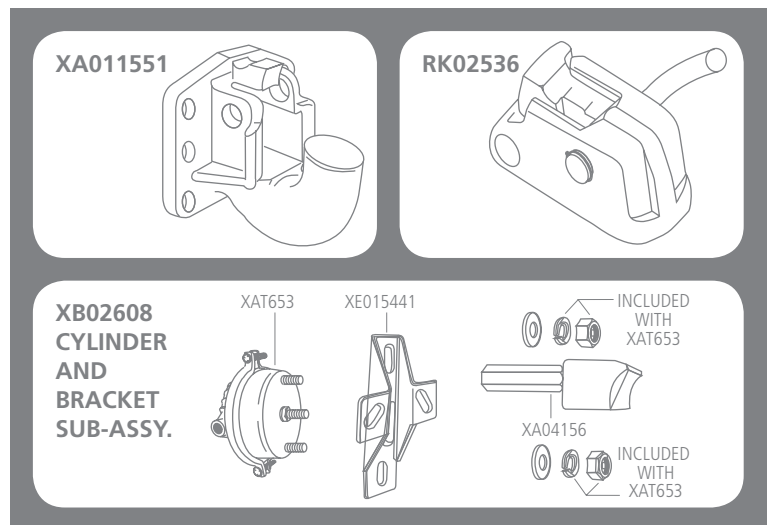
DRAWBAR EYE DIMENSIONS:

60.4mm to 76.2mm I.D. with 31.7mm to 41.4mm diameter section.

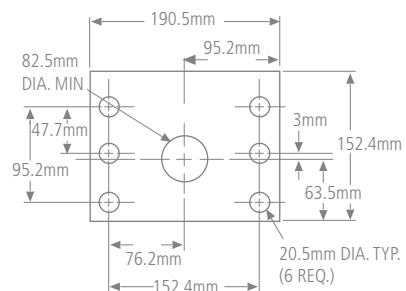
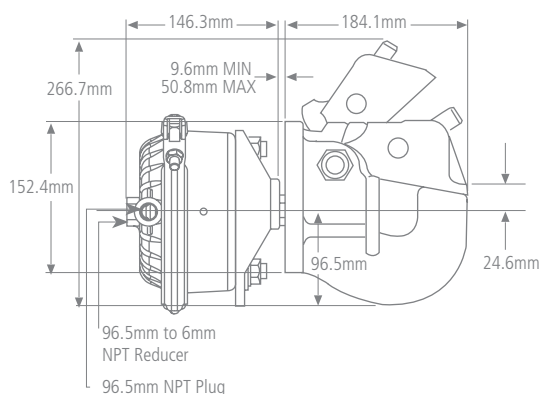
NOTE : Specifications regarding measurements and weights are nominal only. We reserve the right to make changes as necessary.



REPLACEMENT PARTS



MOUNTING DIMENSIONS





PH-775E-01552

LUBRICATED

CAPACITY:

- D = 180 kN
- Weight 27.2 kg (60 lbs.)
- 9,070 kg (20,000 lbs.) Maximum Vertical Load
- 45,360 kg (100,000 lbs.) Maximum Gross Trailer Weight

NOTE: For off-road applications, reduce the above capacities by 25% and use only with a non-swivel mount drawbar.

WARRANTY:

- 12 Months Materials and Workmanship Warranty
- STANAG Compliant

APPLICATION:

Extreme duty construction, logging, milk hauling primarily off-road applications provides torsional relief where a significant amount of articulation is required in a swivel-type mount pintle hook.

DRAWBAR EYE DIMENSIONS:

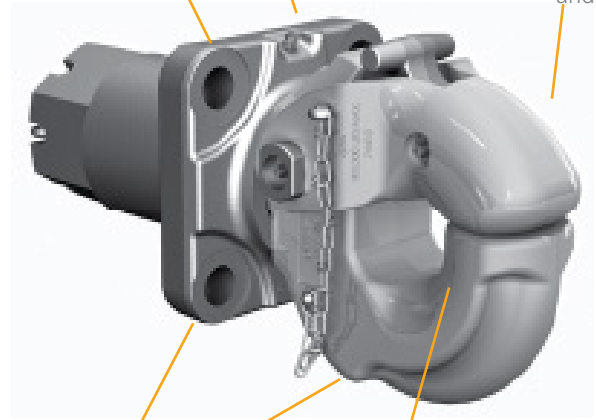
76.2mm I.D. with a 41.4mm diameter section.

NOTE : Specifications regarding measurements and weights are nominal only. We reserve the right to make changes as necessary.

A one piece housing keeps contaminants from entering the pintle hook assembly.

Grease fitting for easy lubrication.

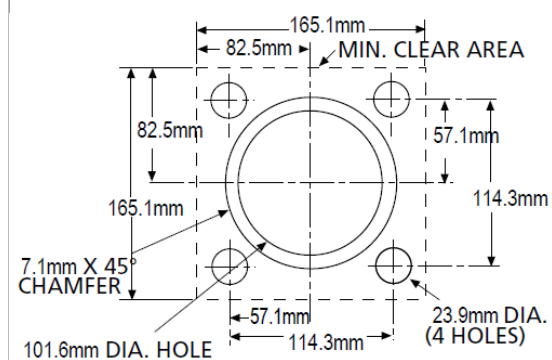
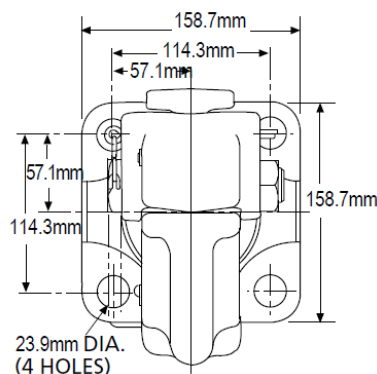
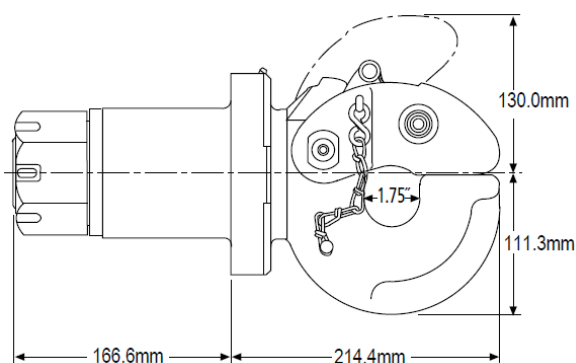
Cast alloy steel latch is heat treated for extreme strength and durability.



Body and housing are forged from special alloy steel and heat treated for high strength, toughness, and wear resistance for extreme duty applications.

Surfaces are machined to tight tolerances to ensure durability.

MOUNTING DIMENSIONS





DB-100FQ1

**RIGID MOUNT – BOLT-ON
(4 BOLT MOUNTING BASE/PLATE MOUNT)**

CAPACITY:

- D= 180kN
- Weight 8.6 kg (19lbs.)
- 9,079 kg (20,000 lbs.) Maximum Vertical Load
- 45,360 kg (100,000 lbs.) Maximum Gross Trailer Weight

NOTE 1: Not designed to be welded to the trailer tongue.

NOTE 2: For off-road applications, reduce the above capacities by 25% and use with a swivel-mount coupling device.

IMPORTANT: When used with hinged tongue trailers, the maximum vertical load cannot exceed 227 kg (500 lbs.) and the maximum gross trailer weight is 56,700 kg (125,000 lbs.).

WARRANTY:

- 12 Months Materials and Workmanship Warranty

APPLICATION:

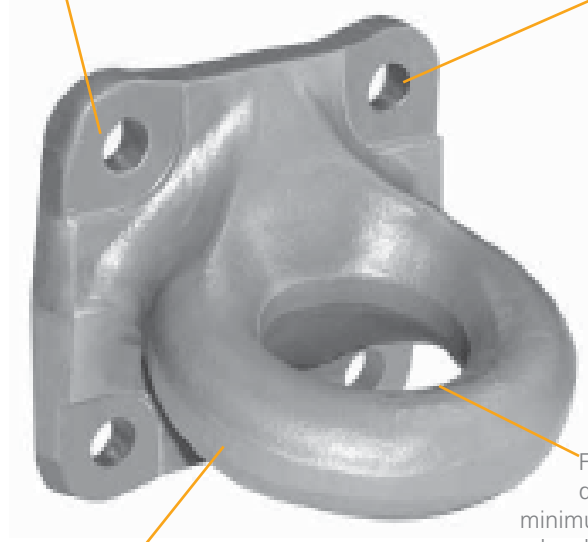
Used on trailers, semitrailers (including doubles), and equipment designed for on- and off-road towing applications within the stated capacities.

NOTE : Specifications regarding measurements and weights are nominal only. We reserve the right to make changes as necessary.

The bolt pattern is the same as Holland model DB-1250-15.

Ultra-light weight with superior strength!

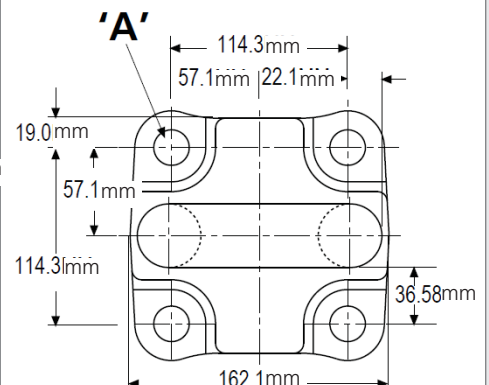
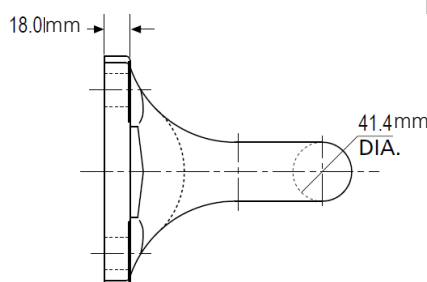
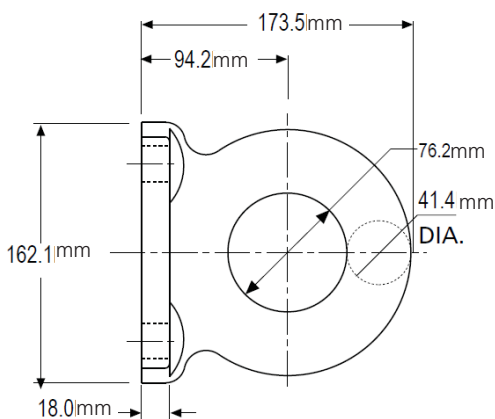
The bolt head area is strengthened for more durability than similar products.



One piece forged alloy steel drawbar is heat treated throughout for greater strength, durability, and toughness.

For maximum durability and minimum wear, the drawbar eye has a 76.2mm I.D. with a 41.4 mm diameter section to match a pintle horn or coupler jaw.

MOUNTING DIMENSIONS





DB1385

RIGID MOUNT – BOLT-ON (4 BOLT MOUNTING BASE/PLATE MOUNT)

CAPACITY:

- 165 kN D-Value
- CRN 24296
- Weight 8.6 kg (19 lbs.)
- 6,310kg (15,000 lbs.) Maximum Vertical Load
- 27,240kg (60,000 lbs.) Maximum Gross Trailer Weight

NOTE 1: Not designed to be welded to the trailer tongue.

NOTE 2: For off-road applications, reduce the above capacities by 25% and use with a swivel-mount coupling device.

IMPORTANT: When used with hinged tongue trailers, where the maximum vertical load cannot exceed 227kg (500 lbs), the maximum gross trailer weight is 40,860kg (90,000 lbs.).

Tested in accordance with SAE J847 (Type II) and ADR 62/01.

WARRANTY:

- 12 Months Materials and Workmanship Warranty

APPLICATION:

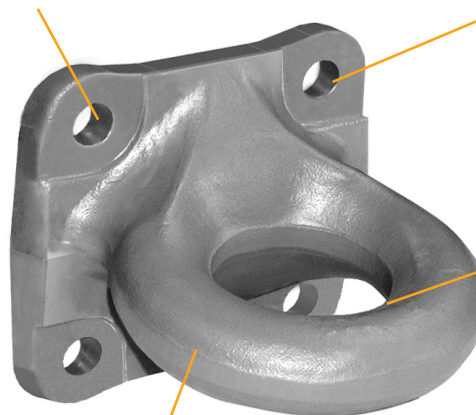
Used on trailers, semitrailers (including doubles), and equipment designed for on- and off-road towing applications within the stated capacities.

NOTE : Specifications regarding measurements and weights are nominal only. We reserve the right to make changes as necessary.

The bolt pattern is the same as the previous DB1385 model but now uses 20mm bolts.

Weighs less than the competition.

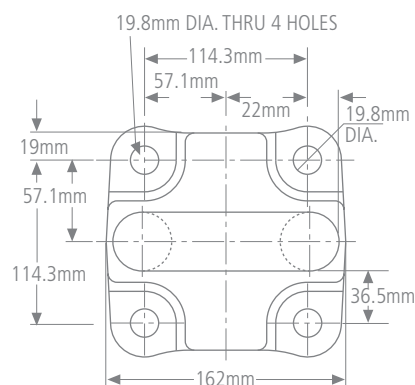
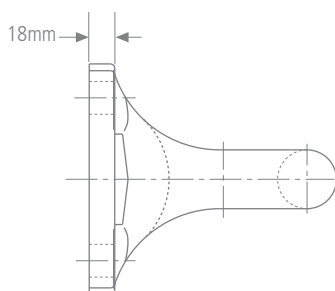
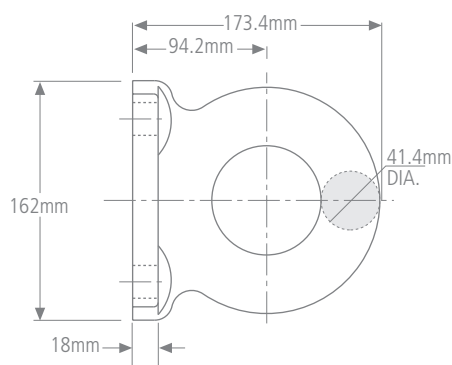
The bolt head area is strengthened for greater strength and durability than similar products.

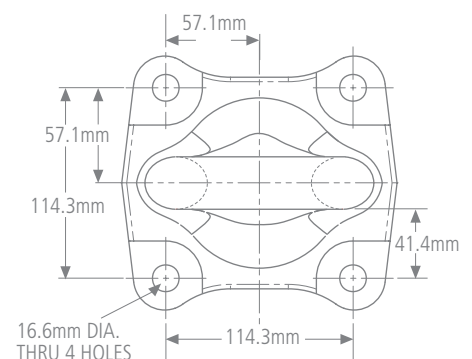


The drawbar eye is 76.2mm I.D. with a 41.4mm diameter cross section. It is induction hardened in the pintle hook contact area for increased strength and wear resistance.

One piece forged alloy steel drawbar is heat treated throughout for greater strength, durability, and toughness.

MOUNTING DIMENSIONS







DB045BW1

SWIVEL MOUNT WELD-ON

CAPACITY:

- D-Value TBA
- CRN TBA
- Weight 17.3 kg (38 lbs.)
- 4,086 kg (9,000 lbs.) Maximum Vertical Load
- 20,430 kg (45,000 lbs.) Maximum Gross Trailer Weight

NOTE 1: This drawbar must be used only in conjunction with a rigid mount coupling device.

NOTE 2: For off-road applications, reduce the above capacities by 25%.

IMPORTANT: When used with hinged tongue trailers, where the maximum vertical load cannot exceed 227 kg (500 lbs.) the maximum gross trailer weight is 38,590 kg (85,000 lbs.).

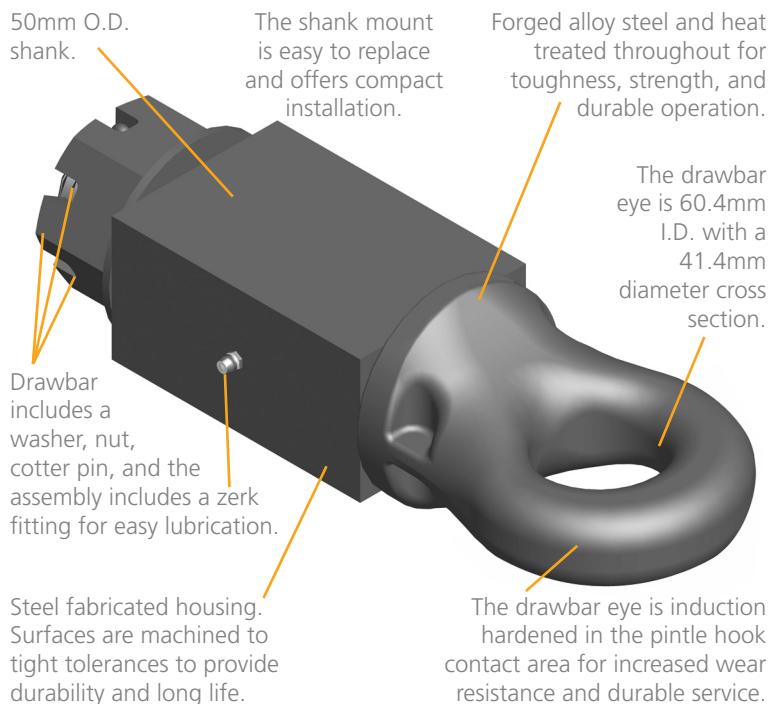
WARRANTY:

- 12 Months Materials and Workmanship Warranty

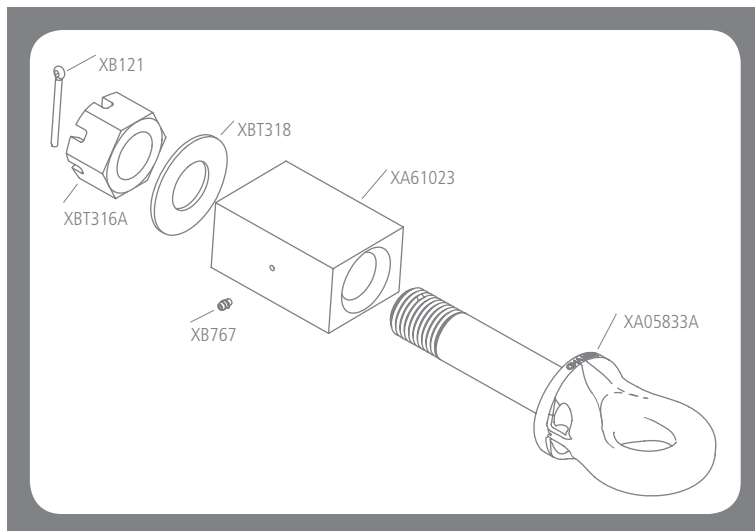
APPLICATION:

Used on straight tongue trailers, semitrailers (including doubles), and equipment designed for on- and off-road towing applications within the stated capacities.

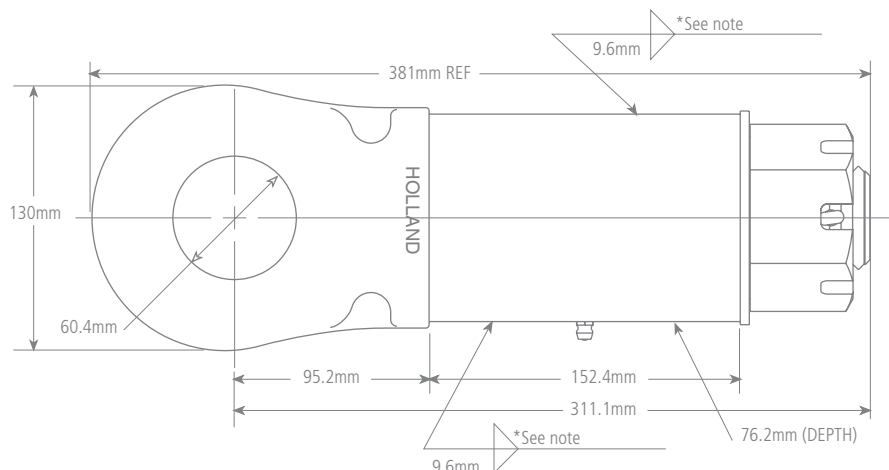
NOTE : Specifications regarding measurements and weights are nominal only. We reserve the right to make changes as necessary.



REPLACEMENT PARTS



MOUNTING DIMENSIONS



*NOTE: 24 linear inches of 9.6mm fillet weld are required to develop hitch strength.



DB61030S/ DB61030

SWIVEL MOUNT / WELD-ON

CAPACITY:

- D= 150kN (ADR 62/02)
- CRN 42325
- Weight 16.3kg
- 4,086 kg (9,000 lbs.) Maximum Vertical Load
- 20,412 kg (45,000 lbs.) Maximum Gross Trailer Weight
- Length 434.9mm

NOTE 1: This drawbar must be used only in conjunction with a rigid mount coupling device.

NOTE 2: This drawbar can be used for on-road applications with hinged drawbars only.

NOTE 3: For off-road applications, reduce the above capacities by 25%.

IMPORTANT: When used with hinged tongue trailers, where the maximum vertical load cannot exceed 227 kg (500 lbs,) the maximum gross trailer weight is 38,500 kg (85,000 lbs.).

WARRANTY:

- 12 Months Materials and Workmanship Warranty

APPLICATION:

Used on dog trailers, dollies, and equipment designed for on- and off-road towing applications within the stated capacities.

NOTE : Specifications regarding measurements and weights are nominal only. We reserve the right to make changes as necessary.

50mm O.D. shank.

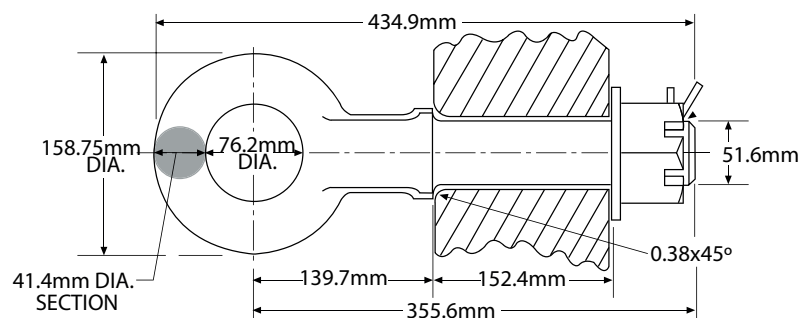
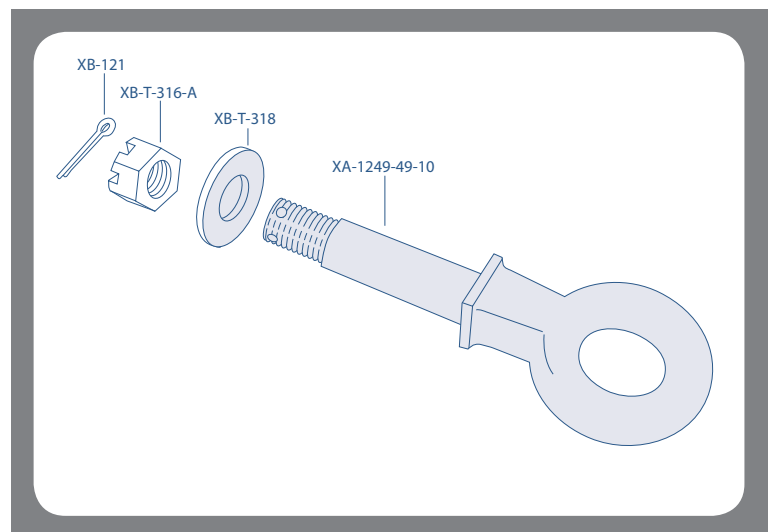
The shank mount is easy to replace and offers compact installation.

Drawbar includes a washer, nut, cotter pin, and the assembly includes a zerk fitting for easy lubrication.

Steel fabricated housing. Surfaces are machined to tight tolerances to provide durability and long life.

The drawbar eye is induction hardened in the pintle hook contact area for increased wear resistance and durable service.

REPLACEMENT PARTS



*NOTE: 24 linear inches of 9.6mm fillet weld are required to develop hitch strength.

NOTE: The mounting surface must have an adequate chamfer, as shown above, so that the drawbar mounts flush with the mounting surface.



SAF 's history begins in 1881 in a village forge in Germany with the invention of a new plough. The family business soon starts building steel axles for agricultural vehicles, and under the name Otto Sauer Achsenfabrik (SAF) develops into one of the leading manufacturers of trailer axles and suspension systems in Europe.

A safety coupling between plough and horse team can be found at the beginning of Holland's history. The Safety Release Clevis Company was founded in South Dakota, USA , in 1910. After its move to Holland, Michigan, the company emerges as one of the largest supplier companies to the commercial vehicles industry under the name The Holland Hitch Company.

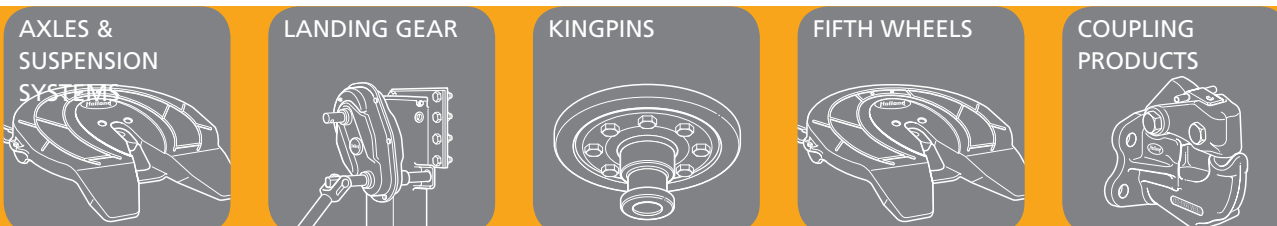
The merger of the two companies to form SAF-HOLLAND in 2006 creates one of the leading global suppliers of high-quality components and services for the commercial vehicle industry.

Alongside axle and suspension systems for trailers and semi-trailers, the product range also includes kingpins and landing gear as well as fifth wheels for tractors, air suspensions, coupling products and numerous other components for buses and trucks.

Today SAF-HOLLAND is represented on all continents and distributes its products and services worldwide under the brand names SAF and HOLLAND. It can boast of an extensive distribution network with global service and dealer locations.

CK22-02 Rev F 0914 Amendments and errors reserved. © SAF-HOLLAND (Aust.) Pty. Ltd.

HIGH QUALITY COMPONENTS FOR THE COMMERCIAL VEHICLE INDUSTRY



EUROPE · NORTH AMERICA · SOUTH AMERICA · AFRICA · ASIA · AUSTRALIA

SAF-HOLLAND (Aust.) Pty. Ltd. · PO Box 63 · 115 High St · Melton Vic 3337
Tel: (03) 9971 7900 Fax: (03) 9743 6763

Western Australia ·	Tel: (08) 9353 1720	Fax: (08) 9353 1730
Queensland ·	Tel: (07) 3375 7033	Fax: (07) 3375 7044
New South Wales ·	Tel: (02) 9672 1950	Fax: (02) 9672 1994
South Australia ·	Tel: (08) 8346 7035	Fax: (08) 8346 3583

www.safholland.com.au

