



Operating and Maintenance Procedures for FW3510-TR Fifth Wheel Top Plates

IMPORTANT SAFETY INSTRUCTIONS

1. Failure to read, understand and follow the important information contained herein may result in a hazardous condition or cause a hazardous condition to develop.
2. Relative to tractor-trailer operations, there are other checks, inspections, and procedures not listed here, which are necessary, prudent, and/or required by law. The following instructions are an addition to these and pertain to the fifth wheel only.
3. Perform these procedures with the area clear of obstacles and other personnel.

CHECK EQUIPMENT PRIOR TO USE

1. Make sure the fifth wheel is properly lubricated.
2. Make sure the secondary lock is disengaged. (See Figure 1).
3. Make sure the fifth wheel locks are open. If not, complete steps 4 and 5 of the Uncoupling procedures on page 2 of this manual.
4. Make sure the fifth wheel ramps are tilted down as shown in Figure 2).

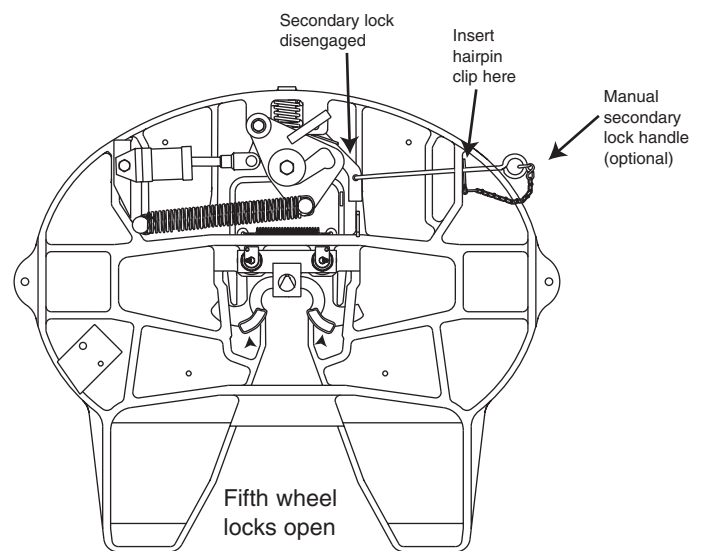


FIGURE 1

COUPLING

1. Back up closer to the trailer, centering the kingpin in the throat of the fifth wheel STOP! Set tractor brakes.
2. Block the trailer wheels, connect brake lines and set trailer brakes.
3. Check to see that the trailer is at the proper height for coupling. The front of the bolster plate should contact the fifth wheel approximately 100 mm to 150 mm behind the fifth wheel centre line (pivot point).

If not, raise or lower the fifth wheel and, if necessary, the landing gear, to obtain this position.

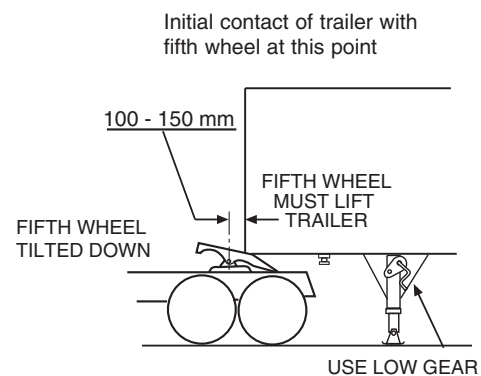
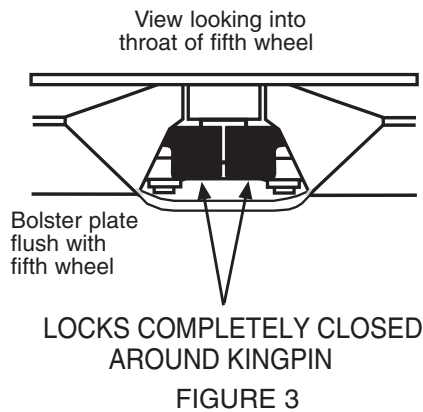


FIGURE 2

- Back under the trailer and engage the fifth wheel locks with the trailer kingpin. Pull forward to test the completeness of the coupling as an INITIAL check. Set tractor brakes. Next, visually inspect the fifth wheel, as shown in Figure 3, to verify that it is properly locked.

WARNING Failure to verify a proper couple can result in tractor and trailer separation, causing death or serious injury to you or others. (See Figure 3, below).



WARNING This unit is not recommended for operation on public streets and highways. When such trailer moves are necessary, the manual secondary lock on the fifth wheel must be engaged as described in step 5 below) and the fifth wheel must be in the down position.

Operation of your vehicle on public streets and highways is prohibited if your fifth wheel is not equipped with a manual secondary lock.

- If operation on public streets or highways is required, the manual secondary lock must be engaged. To engage the secondary lock, remove the hairpin clip from the lock handle

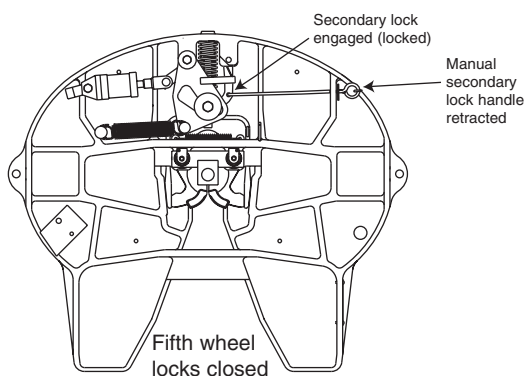


FIGURE 4

allowing the secondary lock handle to retract and the secondary lock to engage behind the locking yoke as shown in Figure 4 above.

- Remove tire blocks. Release trailer and tractor brakes. Raise the trailer to the desired height and move trailer.

WARNING Elevating fifth wheels in the elevated position are less stable than standard fifth wheels. To avoid roll-overs, do not make sudden turns or manoeuvres.

UNCOUPLING

- Position yard spotter tractor and trailer on firm, level ground -- clear of obstacles and people.
- Set trailer brakes, lower fifth wheel until the trailer landing gear touch the ground. Set the tractor brakes.
- Chock trailer wheels. Disconnect trailer air supply and electrical connection.
- If your vehicle is equipped with a manual secondary lock and it is engaged, pull the handle outwards to disengage the secondary lock. While holding the handle out insert the hairpin clip into the hole in the handle. See Figure 5 below.

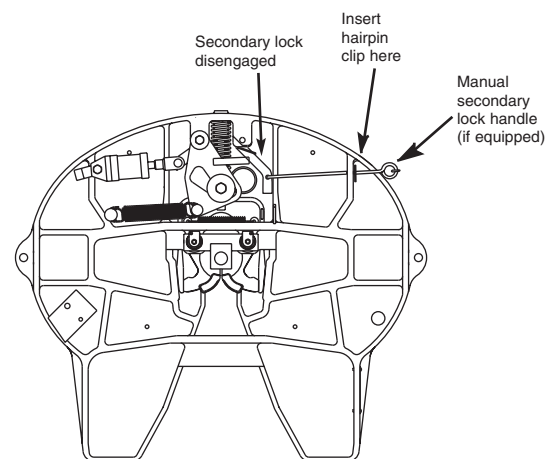
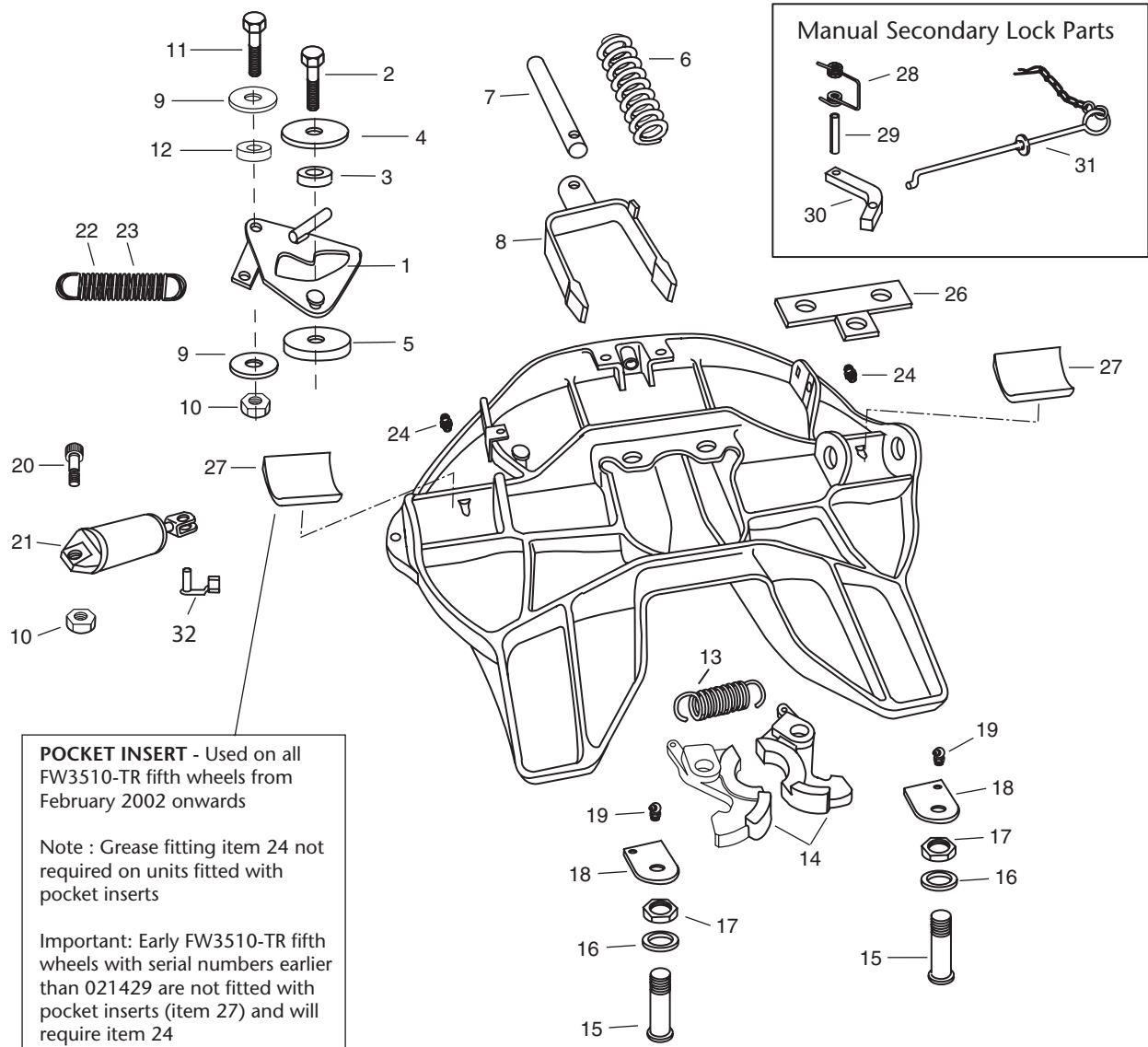


FIGURE 5

- Actuate the fifth wheel control valve and hold it in to open the locks.
- While holding the lock control valve in, slowly pull out from under the trailer.
- After driving completely free of the kingpin, release the lock control valve.

FW3510-TR PARTS BREAKDOWN



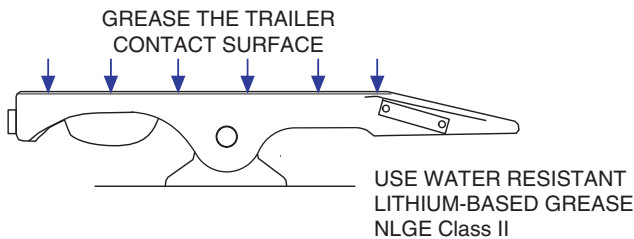
Item	Part No.	Qty	Description	Item	Part No.	Qty	Description
1	* XA-10099	1	Camplate	17	* 32027	1	Hex nut
2	* XB-10035	1	Bolt	18	* XA-10096	2	Cable tab (brass)
3	* XA-1507-1	1	Roller	19	* 38026	2	45 degree lube fitting
4	* XB-07431	1	Washer	20	* 31036	1	Bolt
5	* XA-09040	1	Camplate Spacer	21	* XA-3542-R-T	1	Air Cylinder Assembly
6	* XB-1505	1	Yoke Spring	22	* XB-10087	1	Extension Spring - Inner
7	* XA-1706-1	1	Yoke Shaft	23	* XB-10088	1	Extension Spring - Outer
8	* XA-10094	1	Yoke	24	* 38009	2	Lube Fitting
9	* XB-76004	2	Washer	25	* XB-02967	1	Never-Seez Lube (not shown)
10	* XB-HLN-M12-Z	2	Locknut (Alt. part 32001)	26	XA-76020	1	Sensor Bracket
11	* 31039	1	Bolt	27	XB-10210	2	Pocket Insert
12	* XA-1029	1	Roller	28	XB-2149	1	Spring
13	* XB-07628	1	Spring	29	XB-21-S-500-2750	1	Roll Pin
14	* XA-07296	1	Lock Set	30	XA-3528	1	Secondary Lock Bar
15	* XA-E-60043	2	Lock Pin	31	XA-3546	1	Handle - Secondary Lock
16	* 33027	1	Washer	32	XB-76022	1	Spring pin
			* RK-3510-TR RK-3510-TR-2	Full Overhaul Kit, does not include items 26-31 Overhaul kit excluding air cylinder, parts as for RK-3510-TR except does not include items 10 , 20 and 21			



Periodic Maintenance Procedures for FW3510-TR Fifth Wheel Top Plates

WEEKLY

1. Check bracket support area and grease bracket cap / fifth wheel pocket contact area
2. Lubricate the lock pins through fittings as shown.
3. Be sure the fifth wheel top plate is lubricated.
4. Check operation of the fifth wheel locking mechanism.



MONTHLY

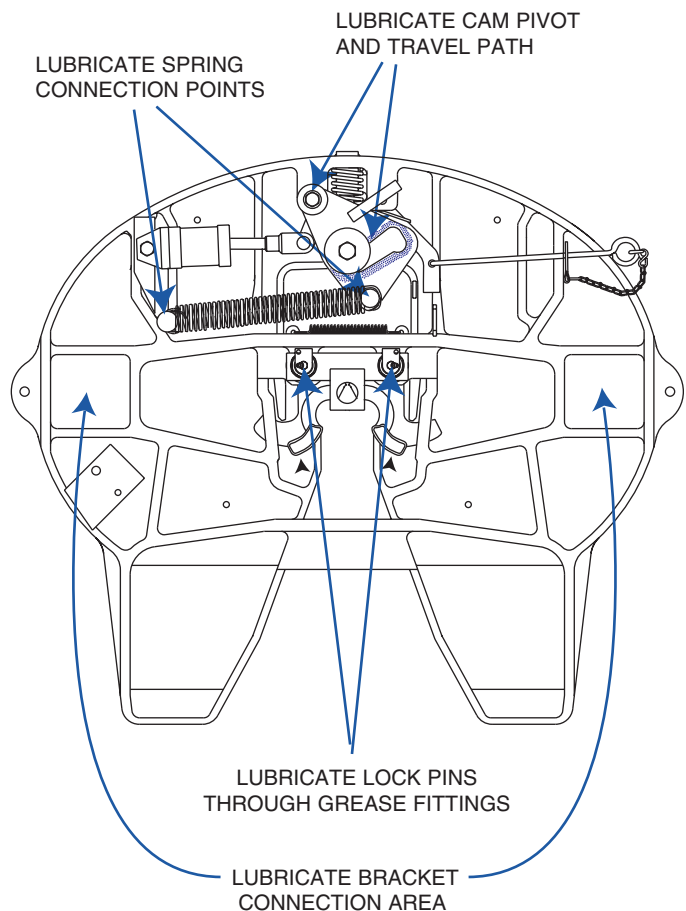
1. Steam clean the entire top plate thoroughly.
2. Inspect the fifth wheel top plate assembly.
 - Check for — and replace — any bent, worn, or broken parts.
 - Check for cracks in the top plate casting or any component part.

Replace as required using only genuine HOLLAND parts.

3. Check the fifth wheel locking mechanism for proper operation using a FIFTH WHEEL LOCK TESTER TOOL (part no. TF-TLN-5001).

When checking, move the lock tester fore and aft when closed in the locks. If play exceeds 8 mm, rebuild or replace the fifth wheel top plate. Contact HOLLAND for parts and ordering information.

4. Relubricate the entire fifth wheel as shown above.



AFTER 5000 hours of Service

After approx. 5000 hours of service, depending on operation conditions and actual number of couplings, it is strongly recommended to completely overhaul the fifth wheel. Use one of the following rebuild kits and follow the instructions in the service manual.

RK-3510-TR (repair kit incl. air cylinder)

RK-3510-TR-2 (repair kit excl. air cylinder)

For additional information, assistance, or details on ordering tools and replacement parts, contact Holland See below for contact information.



WARNING

DO NOT use any fifth wheel which does not operate properly

Copyright © June 2004 • The Holland Group Inc.



The Holland Group, Inc.
Holland, MI 49423
United States
Phone: (616) 396-6501
Fax: (616) 396-1511

EN ISO
9001:2000



Certified
Company

Holland Europe GmbH

Altenkamp 9
D-33758
Schloss Holte-Stukenbrock
Germany
Phone: +49 (0) 5207-89560
Fax: +49 (0) 5207-89565

Holland Eurohitch Ltd.

Hoo Farm Industrial Estate
Worcester Road
Kidderminster
Worcestershire
DY11 7RA
Phone: +44 (0) 1562-732010
Fax: +44 (0) 1562-732020

Holland Hitch (Aust.) Pty. Ltd.

Melton, Victoria, Australia
Phone: 61-(0)3-9743-6799
Fax: 61-(0)3-9747-9617

Nippon Holland, Ltd.

Tokyo, Japan
Phone: 81-(0)3-3461-9130
Fax: 81-(0)3-3463-1407

Holland Transtrade

(Thailand) Company, Ltd.
Bangkok, Thailand
Phone: 66 (0)2-513-8758
Fax: 66 (0)2-513-8757

Holland Transtrade

Far East SDN BHD
Shah Alam, Malaysia
Phone: 60 (0)3 734-2888
Fax: 60 (0)3 736-5588