

## Conversion of 11t axle program to compact bearing system 88x120 from CW 09/2013

SAF-HOLLAND has now developed an improved version of the familiar 88x120 bearing system for use in tougher operating conditions.

The improvements in the compact bearing system consist of elements such as:

- improved material with optimized heat treatment
- an additional tapered roller in each bearing series
- greater distance between roller brackets
- improved profiling of raceways

These improvements have lengthened the life of the bearing by an average of 60%, depending on the operating conditions.

In order to fulfill the high expectations of customers in terms of sustained performance and the longevity of the 11t axle range, these axle types are now being fitted with the optimized and maintenance-free 88x120 compact bearing system.

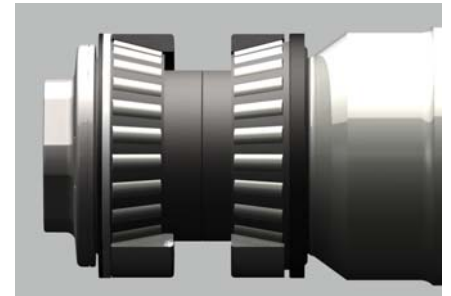


Fig.1: compact bearing system 88x120

The following table gives a comparison of axle specifications as they have been up to now and the future axle specifications.

For the axles labeled \*, the familiar TDB numbers of the disc brakes are to change, as shown in the table. Please take this into account where necessary when registering vehicles.

### There will be a smooth transition to the new system from CW09/2013.

The new type specifications apply immediately for orders. New orders and orders placed after this date will be converted automatically. Please observe the specifications given in the order confirmations from SAF-HOLLAND. The agreed commercial conditions are not affected by this conversion.

Axle type up to now	Axle type from CW 09/2013	Test report	
SKRS 11342	S11-4220	TDB 0455	
SKRLS 11342	SL11-4220	TDB 0455	
SKRZ 11337	Z11-3720	TDB 0460	
SKRLZ 11337	ZL11-3720	TDB 0460	
up to now	from CW 09/2013	Test report up to now	Test report from CW09/2013
*SKRS 11322 K01	*S11-22 K01	36109011	36110203
*SKRZ 11322 K01	*Z11-22 K01	36109011	36110103