



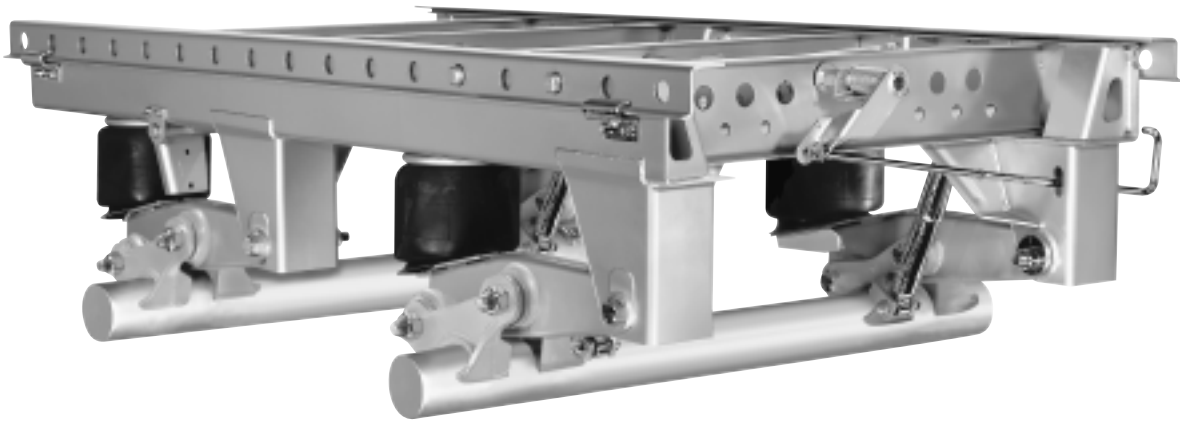
NS SERIES

PARTS LIST



NS-400/450 Series Suspension/Slider for Van and Reefer Trailer Applications

Suspension Model Identification, Service
Repair Kits (SRKs) and Parts List Information



*For Maintenance Information, refer to
Maintenance Manual (Part No. XL-AR320).*

SERIAL NUMBER TAG INFORMATION

Model Identification

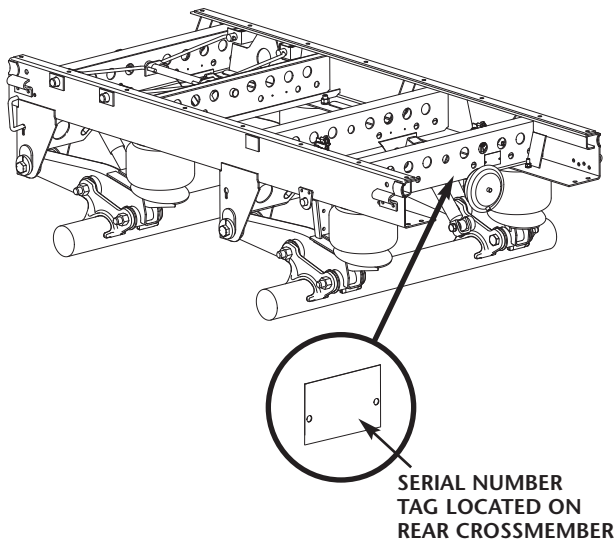
The NS Series Suspension Serial Tag is located on the rear crossmember (**FIGURE 1**).

NOTE: This manual applies to the suspension series or the models listed on the front cover. However, we urge you to determine your specific model number, write that information below and refer to it when obtaining information or replacement parts.

NOTE: Refer to the serial number tag attached to the slider rear crossmember for information.

Model Number _____
 Serial Number _____
 Parts List Number _____
 In Service Date _____

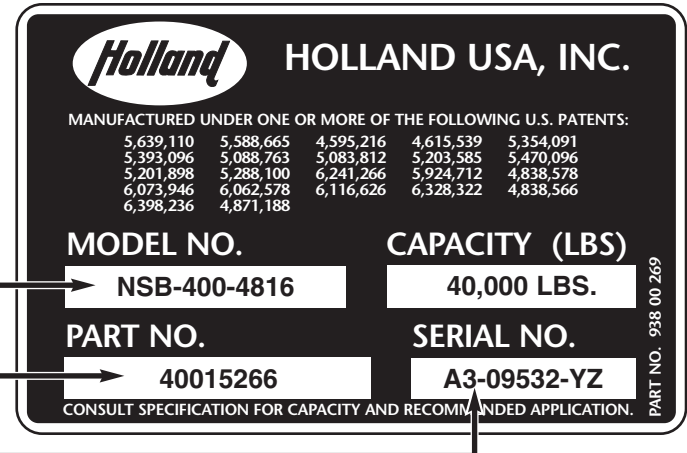
FIGURE 1 Serial Number Tag Location



Model Nomenclature

The sample tag shown below will help you interpret the information on the Holland USA, Inc. serial number tag. The model number is on the first line along with the suspension capacity. The second line contains the serial number and the third line has the parts list numbers (**FIGURE 2**).

FIGURE 2 Serial Number Tag



NS B 400 - 4 8 16

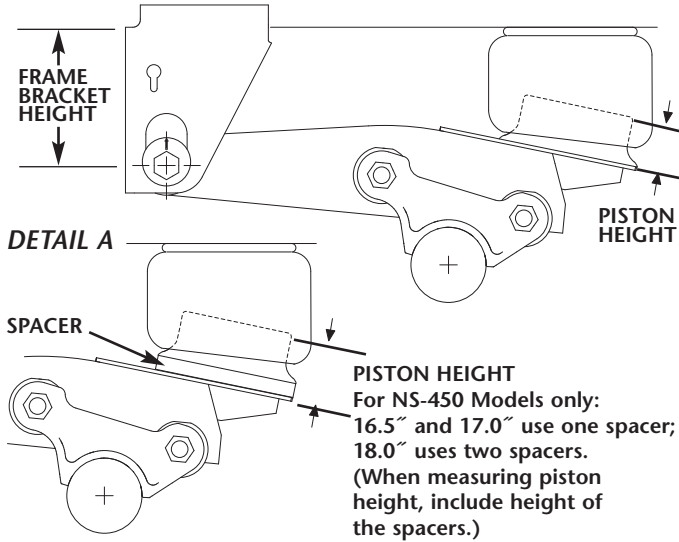
- Ride Height
 - 16" (406mm)
 - 16.5" (419mm)
 - 17" (432mm)
 - 18" (457mm)
- Slider Box Width
 - (2) 42" (1067mm) Wide
 - (8) 48" (1219mm) Wide
- Axle Spacing Width
 - (4) 49" (1245mm), NS-400, NS-450
 - (5) 61" (1549mm), NS-450 only
 - (6) 73" (1854mm), NS-450 only
 - (7) 60" (1524mm), NS-450 only
 - (8) 72" (1829mm), NS-450 only
- Axle Capacity
 - Suspension Series
 - 40,000 Tandem NS-400
 - 45,000 Tandem NS-450
- Slider Box Rail Style
 - (B) Holland
 - (H) Hutch
 - (T) TTMA Rail
- NS Slider

SUSPENSION MODEL IDENTIFICATION

Suspension Model Verification Procedures

1. If the serial tag is not legible or is unavailable, verify the ride height by measuring the height of the frame bracket (**FIGURE 3**). Compare it to the *Frame Bracket and Piston Height Charts* (this page).

FIGURE 3



2. Fully extend the air spring and measure the air spring piston height (**FIGURE 3** and **DETAIL A**) and then compare it to the *Frame Bracket and Piston Height Charts* (this page).
3. After determining the frame bracket and/or piston height, determine the shock part number and cross reference the information in the chart to confirm the model number.

Frame Bracket and Piston Height Charts

EZ-Align

MODEL NO.	FRAME BRACKET HEIGHT	PISTON HEIGHT	SHOCK ABS. PART NO.
NS-400/450-16	9.06" (230mm)	2.75" (70mm)	900 45 298
NS-400/450-16.5	9.06" (230mm)	3.75" (95mm)	900 44 162
NS-400/450-17	10.06" (256mm)	4.75" (121mm)	900 45 299
NS-400/450-18	10.06" (256mm)	5.67" (144mm)	900 45 040

Welded

MODEL NO.	FRAME BRACKET HEIGHT	PISTON HEIGHT	SHOCK ABS. PART NO.
NS-400/450-16	9.25" (235mm)	2.75" (70mm)	900 45 298
NS-400/450-16.5	9.25" (235mm)	3.75" (95mm)	900 44 162
NS-400/450-17	10.25" (260mm)	4.75" (121mm)	900 45 299
NS-400/450-18	10.25" (260mm)	5.67" (144mm)	900 45 040

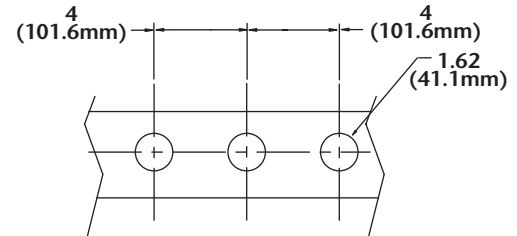
Identification of Body Rail Style

To correctly identify your trailer's body rail style, and to determine compatibility between Hutch and Holland slider boxes, measure the pin size and hole spacing.

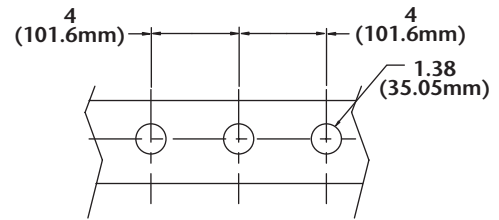
FIGURE 4

Body Rail Identification

HUTCH

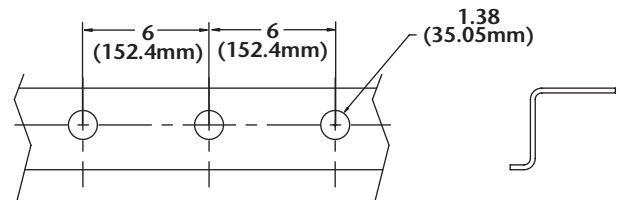


TTMA



Hutch spacing with Holland size pins.

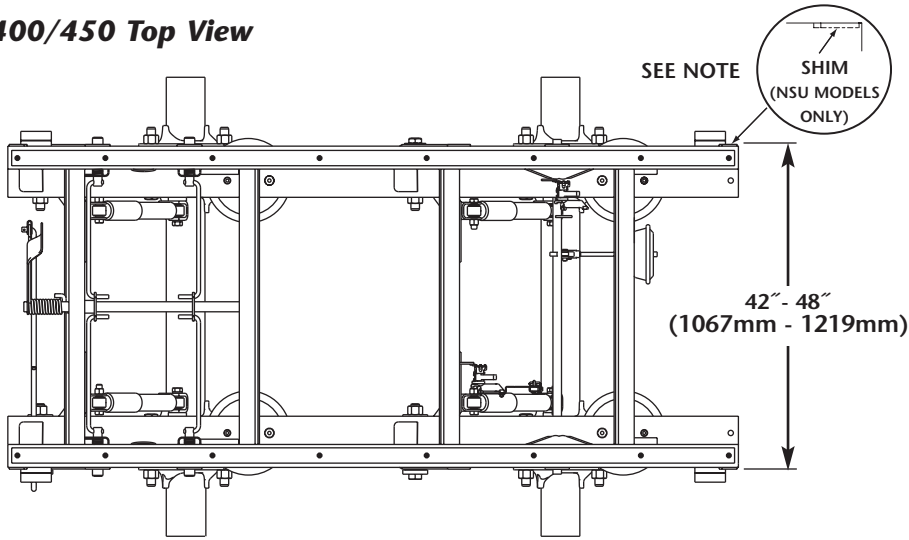
HOLLAND



SLIDER BOX SIZE IDENTIFICATION

FIGURE 5

NS-400/450 Top View



NOTE: Only NSU models have shims mounted on the inside of the frame rails; other models have shims mounted on the outside of the frame rails. Shim thickness is not included in the 42" or 48" measurement.

FIGURE 6

NS-400 Side View

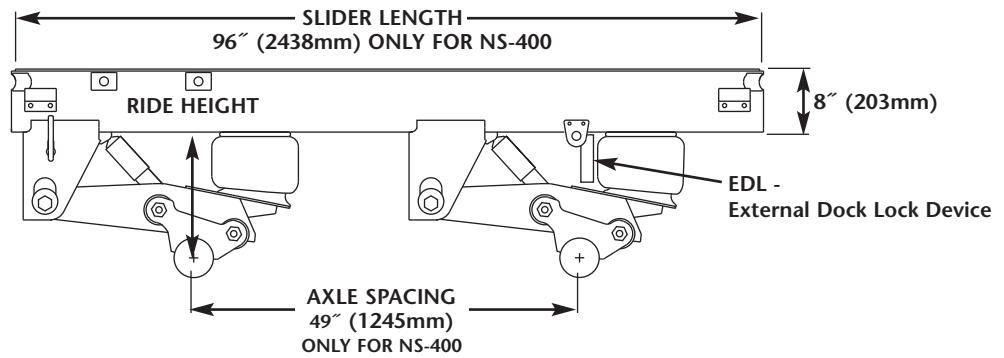
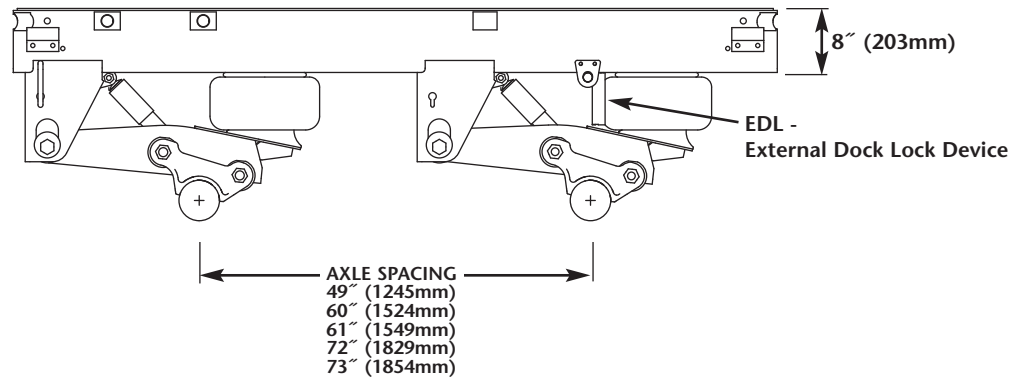


FIGURE 7

NS-450 Side View



SERVICE REPAIR KITS (SRK)

The NS Series suspension provides Service Repair Kits (SRK's) for the replacement of pivot/axle connections and frame brackets (**FIGURE 8**).

For frame bracket replacement, identify the proper frame bracket replacement kit by measuring the frame bracket height ("A" dim. - **FIGURE 8**) and by referencing the dimension to the *Frame Bracket Replacement Kits* chart, below.

IMPORTANT: For easier field replacement of NS Series frame brackets the EZ-Align (non-welded) style frame bracket **must** be used to replace a welded alignment style frame bracket.

NOTE: The Holland Bushing Service tool, part no. 505 44 012, is available to ease removal and replacement of bushings. Contact your Holland distributor or refer to this Parts List for details.

FIGURE 8

Pivot and Axle Connections

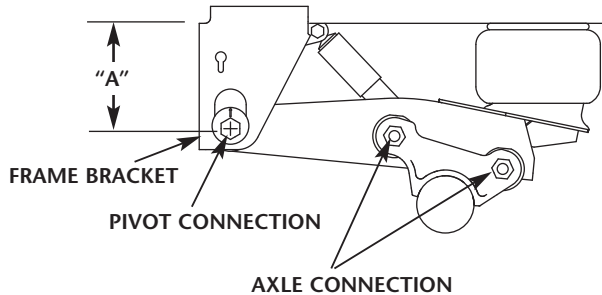
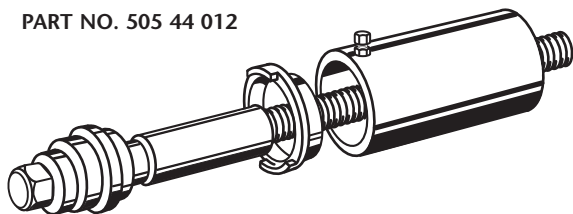


FIGURE 9

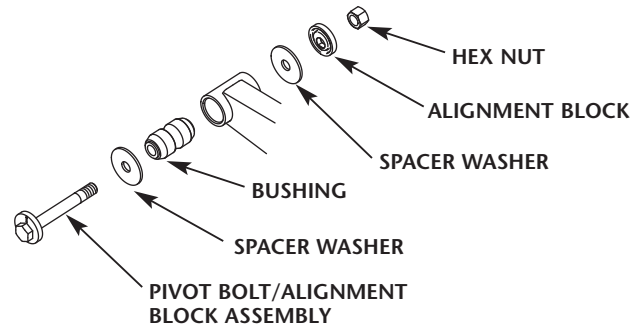
Bushing Service Tool

PART NO. 505 44 012



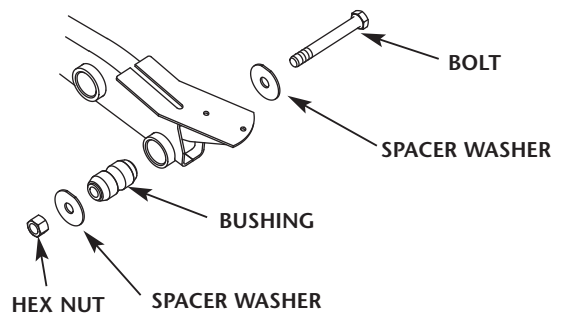
Pivot Connection Kits

DESCRIPTION	SRK NO.	PART NO.	APPLICATION
1 side welded & 1 side EZ-Align	SRK-525	481 00 389	1 Kit Req. per Axle
EZ-Align	SRK-233	481 00 295	2 Kits Req. per Axle



Axle Connection Kit

SRK NO.	PART NO.	APPLICATION
SRK-457	481 00 320	1 Kit Req. per Axle

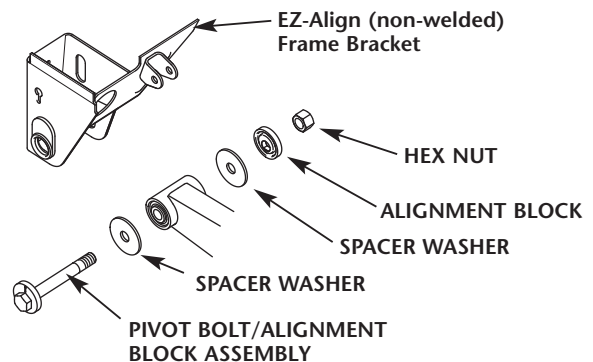


Frame Bracket Replacement Kits

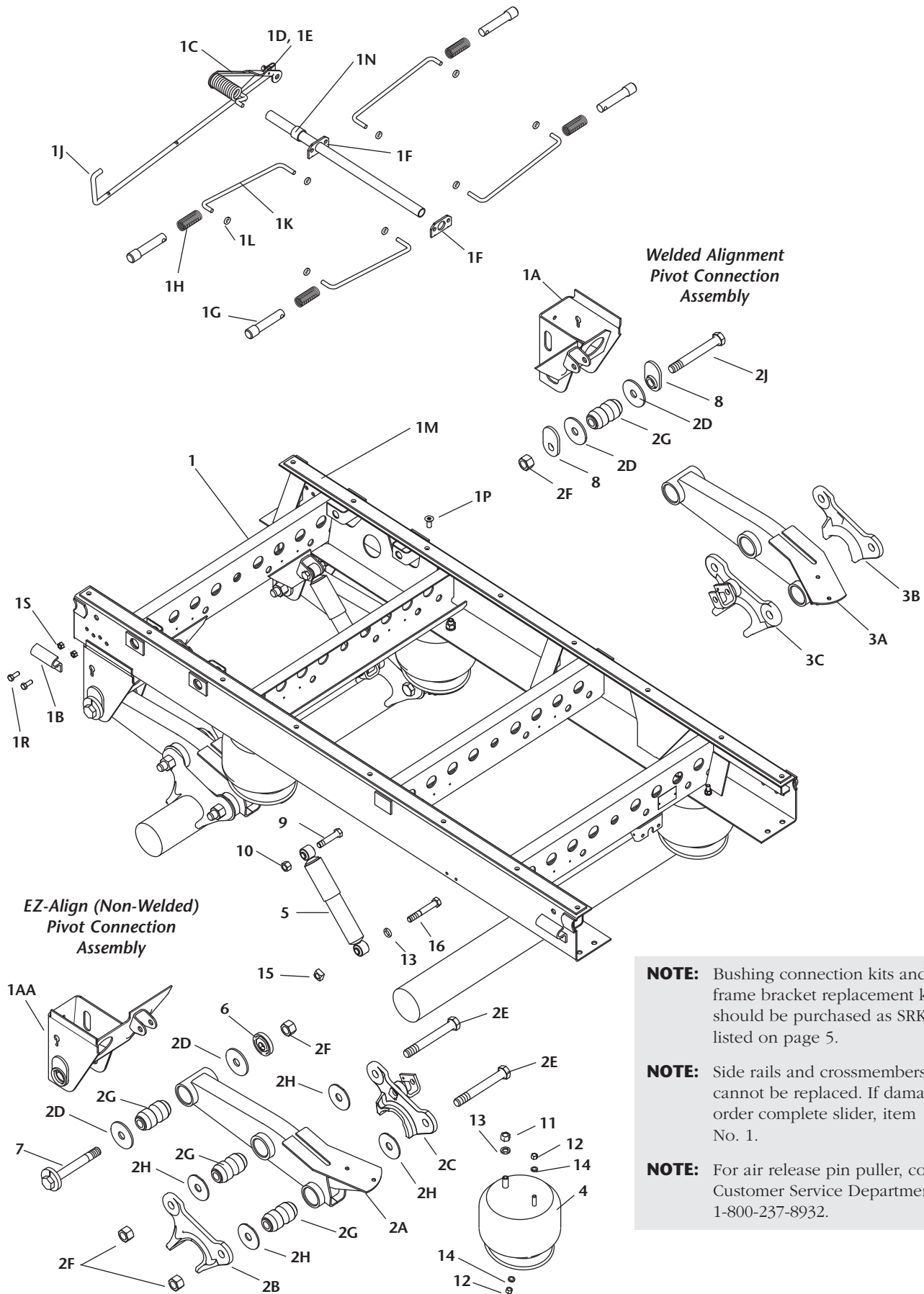
"A" DIM.*	PART NO.	APPLICATION
9.06" (230mm)	110 04 028	Roadside
9.06" (230mm)	110 04 029	Curbside
10.06" (256mm)	110 04 030	Roadside
10.06" (256mm)	110 04 031	Curbside

* See **FIGURE 8** for "A" dimension.

IMPORTANT: Welded Alignment frame brackets **must** be replaced with EZ-Align (non-welded) frame brackets.



NS-400 EXPLODED VIEW



NOTE: Bushing connection kits and frame bracket replacement kits should be purchased as SRKs listed on page 5.

NOTE: Side rails and crossmembers cannot be replaced. If damaged, order complete slider, item No. 1.

NOTE: For air release pin puller, contact Customer Service Department at 1-800-237-8932.

NS-400 PARTS LIST

Slider Components

ITEM NO.	DESCRIPTION	96" SLIDER BOX RAIL STYLE	NS-400-16.0	NS-400-16.5	NS-400-17.0	NS-400-18.0	QTY.
1	Slider Assy. w/Qwik Release w/ 2 NW & 2 WA Frame Brkts.*	NSB**	42" - NL1Q22-112N000Y0 48" - NL1Q12-112N000Y0	42" - NL1Q22-122N000Y0 48" - NL1Q12-122N000Y0	42" - NL1Q22-132N000Y0 48" - NL1Q12-132N000Y0	42" - NL1Q22-142N000Y0 48" - NL1Q12-142N000Y0	1
		NSH**	42" - NH1Q22-112N000Y0 48" - NH1Q12-112N000Y0	42" - NH1Q22-122N000Y0 48" - NH1Q12-122N000Y0	42" - NH1Q22-132N000Y0 48" - NH1Q12-132N000Y0	42" - NH1Q22-142N000Y0 48" - NH1Q12-142N000Y0	
		NST**	42" - NT1Q22-112N000Y0 48" - NT1Q12-112N000Y0	42" - NT1Q22-122N000Y0 48" - NT1Q12-122N000Y0	42" - NT1Q22-132N000Y0 48" - NT1Q12-132N000Y0	42" - NT1Q22-142N000Y0 48" - NT1Q12-142N000Y0	
		NSU**	42" - NU1Q22-112N000Y0 48" - NU1Q12-112N000Y0	42" - NU1Q22-122N000Y0 48" - NU1Q12-122N000Y0	42" - NU1Q22-132N000Y0 48" - NU1Q12-132N000Y0	42" - NU1Q22-142N000Y0 48" - NU1Q12-142N000Y0	
1	Slider Assy. w/Qwik Release w/ 4 NW Frame Brackets*	NSB**	42" - NL1Q22-111N000Y0 48" - NL1Q12-111N000Y0	42" - NL1Q22-121N000Y0 48" - NL1Q12-121N000Y0	42" - NL1Q22-131N000Y0 48" - NL1Q12-131N000Y0	42" - NL1Q22-141N000Y0 48" - NL1Q12-141N000Y0	1
		NSH**	42" - NH1Q22-111N000Y0 48" - NH1Q12-111N000Y0	42" - NH1Q22-121N000Y0 48" - NH1Q12-121N000Y0	42" - NH1Q22-131N000Y0 48" - NH1Q12-131N000Y0	42" - NH1Q22-141N000Y0 48" - NH1Q12-141N000Y0	
		NST**	42" - NT1Q22-111N000Y0 48" - NT1Q12-111N000Y0	42" - NT1Q22-121N000Y0 48" - NT1Q12-121N000Y0	42" - NT1Q22-131N000Y0 48" - NT1Q12-131N000Y0	42" - NT1Q22-141N000Y0 48" - NT1Q12-141N000Y0	
		NSU**	42" - NU1Q22-111N000Y0 48" - NU1Q12-111N000Y0	42" - NU1Q22-121N000Y0 48" - NU1Q12-121N000Y0	42" - NU1Q22-131N000Y0 48" - NU1Q12-131N000Y0	42" - NU1Q22-141N000Y0 48" - NU1Q12-141N000Y0	
1A	Frame Bracket (Welded)	Roadside	N/A	N/A	N/A	N/A	N/A
		Curbside	See Frame Bracket Replacement Kits - page 5				N/A
1AA	Frame Bracket (EZ-Align)	Roadside	See Frame Bracket Replacement Kits - page 5				N/A
		Curbside	See Frame Bracket Replacement Kits - page 5				N/A
1B	Hold Down Clip		42" - SLO893 48" - SLO893	42" - SLO893 48" - SLO893	42" - SLO893 48" - SLO893	42" - SLO893 48" - SLO893	4
1C	Center Pin Pull Assembly		42" - SLOA1277-01 48" - SLOA1277-01	42" - SLOA1277-01 48" - SLOA1277-01	42" - SLOA1277-01 48" - SLOA1277-01	42" - SLOA1277-01 48" - SLOA1277-01	1
1D	Clip		42" - SLOA1273 48" - SLOA1273	42" - SLOA1273 48" - SLOA1273	42" - SLOA1273 48" - SLOA1273	42" - SLOA1273 48" - SLOA1273	1
1E	Cotter Pin 3/16" x 1 1/2"		42" - XB-CTP-014-59 48" - XB-CTP-014-59	42" - XB-CTP-014-59 48" - XB-CTP-014-59	42" - XB-CTP-014-59 48" - XB-CTP-014-59	42" - XB-CTP-014-59 48" - XB-CTP-014-59	1
1F	Torsion Cam		42" - SLOA1274 48" - SLOA1274	42" - SLOA1274 48" - SLOA1274	42" - SLOA1274 48" - SLOA1274	42" - SLOA1274 48" - SLOA1274	2
1G	Lock Pin Hutch Style 1 5/8" Dia.		42" - SLOA1261 48" - SLOA1261	42" - SLOA1261 48" - SLOA1261	42" - SLOA1261 48" - SLOA1261	42" - SLOA1261 48" - SLOA1261	4
	Lock Pin 1 3/8" Dia. All Others		42" - SLOA1238 48" - SLOA1238	42" - SLOA1238 48" - SLOA1238	42" - SLOA1238 48" - SLOA1238	42" - SLOA1238 48" - SLOA1238	4
1H	Compression Spring		42" - XB-SPG-020-35 48" - XB-SPG-020-35	42" - XB-SPG-020-35 48" - XB-SPG-020-35	42" - XB-SPG-020-35 48" - XB-SPG-020-35	42" - XB-SPG-020-35 48" - XB-SPG-020-35	4
1J	Pull Handle		42" - SLOA1269-02 48" - SLOA1269-01	42" - SLOA1269-02 48" - SLOA1269-01	42" - SLOA1269-02 48" - SLOA1269-01	42" - SLOA1269-02 48" - SLOA1269-01	1
1K	Pin Pull Rod		42" - SLOA1239-01 48" - SLOA1239-02	42" - SLOA1239-01 48" - SLOA1239-02	42" - SLOA1239-01 48" - SLOA1239-02	42" - SLOA1239-01 48" - SLOA1239-02	4
1L	Washer 1/2" (Pin Pull Rod)		42" - XB-PW-016-85 48" - XB-PW-016-85	42" - XB-PW-016-85 48" - XB-PW-016-85	42" - XB-PW-016-85 48" - XB-PW-016-85	42" - XB-PW-016-85 48" - XB-PW-016-85	8
1M	Slider Pad 96" (Long)		42" - XB-SLOA1054 48" - XB-SLOA1054	42" - XB-SLOA1054 48" - XB-SLOA1054	42" - XB-SLOA1054 48" - XB-SLOA1054	42" - XB-SLOA1054 48" - XB-SLOA1054	2
1N	Spacer		42" - SLO523-07 48" - SLO523-07	42" - SLO523-07 48" - SLO523-07	42" - SLO523-07 48" - SLO523-07	42" - SLO523-07 48" - SLO523-07	1
1P	Self Tap Screw 5/16"-18 x 3/4"		42" - XB-STS-008-16 48" - XB-STS-008-16	42" - XB-STS-008-16 48" - XB-STS-008-16	42" - XB-STS-008-16 48" - XB-STS-008-16	42" - XB-STS-008-16 48" - XB-STS-008-16	16
1R	Bolt 1/2"-13 x 1 1/4"		42" - XB-HHC-001-33 48" - XB-HHC-001-33	42" - XB-HHC-001-33 48" - XB-HHC-001-33	42" - XB-HHC-001-33 48" - XB-HHC-001-33	42" - XB-HHC-001-33 48" - XB-HHC-001-33	8
1S	Lock Nut 1/2"-13		42" - XB-SLN-012-42 48" - XB-SLN-012-42	42" - XB-SLN-012-42 48" - XB-SLN-012-42	42" - XB-SLN-012-42 48" - XB-SLN-012-42	42" - XB-SLN-012-42 48" - XB-SLN-012-42	8

* NW = EZ-Align (Non-Welded) style and WA = Welded Alignment style frame brackets.

** NSB = Holland slider box rail style; NSH = Hutch slider box rail style;
NST = TTMA slider box rail style; NSU = Utility slider box rail style.

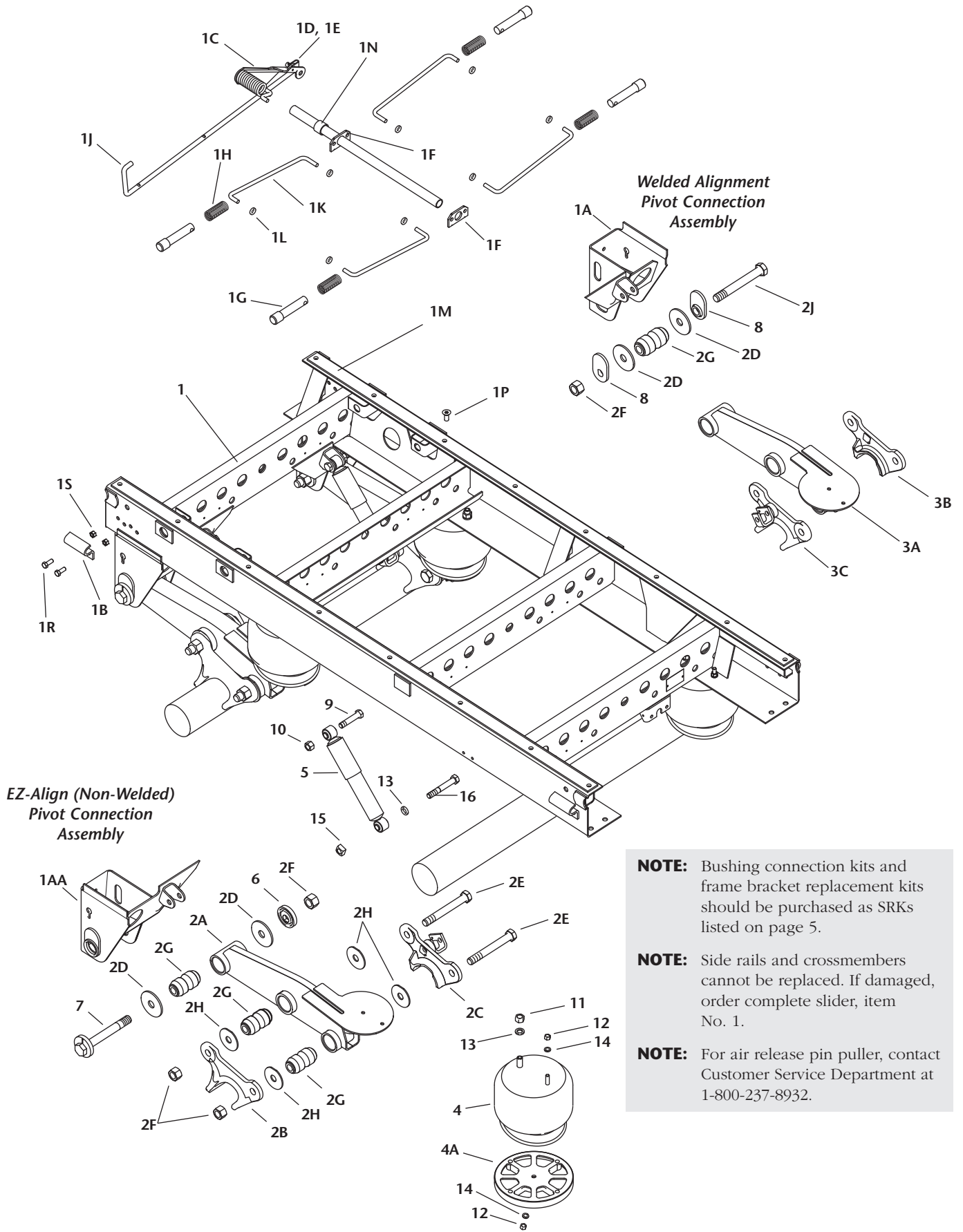
NS-400 PARTS LIST *continued*

Suspension Components

ITEM NO.	DESCRIPTION	NS-400-16.0	NS-400-16.5	NS-400-17.0	NS-400-18.0	QTY.
2A	Equalizing Beam LH (bushed beam only)	90516945	90516945	90516945	90516945	2
2B	Axle Adapter LH (outside)	90001215	90001215	90001215	90001215	2
2C	Axle Adapter LH (inside)	90501350	90501350	90501350	90501350	2
2D***	Pivot Connection Wear Washer	90036177	90036177	90036177	90036177	8
2E***	Axle Bolt 1.125"-7 x 8.5" LG	93201051	93201051	93201051	93201051	8
2F***	Hex Lock Nut 1.125"-7	93400506	93400506	93400506	93400506	6
2G***	Bushing	90008149	90008149	90008149	90008149	12
2H***	Axle Connection Wear Washer	90036217	90036217	90036217	90036217	16
2J***	Pivot Bolt, Hex 1.125"-7 x 8.5" LG GR 8	93201069	93201069	93201069	93201069	2
3A	Equalizing Beam RH (bushed beam only)	90516946	90516946	90516946	90516946	2
3B	Axle Adapter RH (outside)	90001216	90001216	90001216	90001216	2
3C	Axle Adapter RH (inside)	90501351	90501351	90501351	90501351	2
4	Air Spring	90557223	90557225	90557225	90557194	4
5	Shock Absorber	90045298	90044162	90045299	90045040	4
6***	Alignment Block	90008238	90008238	90008238	90008238	2
7***	Pivot Bolt Assembly	90508019	90508019	90508019	90508019	2
8***	Alignment Plate	90008234	90008234	90008234	90008234	4
9	Hex Bolt .75"-10 x 3.50"	93003597	93003597	93003597	93003597	8
10	Hex Lock Nut .75"-10	93400492	93400492	93400492	93400492	4
11	Hex Nut .75"-16	93400149	93400149	93400149	93400149	4
12	Hex Nut .50"-13	93400136	93400136	93400136	93400136	8
13	Washer .78"	93600077	93600077	93600077	93600077	8
14	Washer .53"	93600072	93600072	93600072	93600072	8
15	Square Nut .75"-10	93400367	93400367	93400367	93400367	4
16	Hex Bolt .75"-10 x 5.0"	93003633	93003633	93003633	93003633	4

***Replacement components should be purchased in bushing connection SRK kits listed on page 5.

NS-450 EXPLODED VIEW



NS-450 PARTS LIST

NOTE: For 108" and 120" Slider Boxes and Components Contact:
Technical/Customer Service Department: 1-800-237-8932

Slider Components

ITEM NO.	DESCRIPTION	96" SLIDER BOX RAIL STYLE	NS-450-16.0	NS-450-16.5	NS-450-17.0	NS-450-18.0	QTY.
1	Slider Assy. w/Qwik Release w/ 2 NW & 2 WA Frame Brkts.*	NSB**	42" - NL3Q22-112N000Y0 48" - NL3Q12-112N000Y0	42" - NL3Q22-122N000Y0 48" - NL3Q12-122N000Y0	42" - NL3Q22-132N000Y0 48" - NL3Q12-132N000Y0	42" - NL3Q22-142N000Y0 48" - NL3Q12-142N000Y0	1
		NSH**	42" - NH3Q22-112N000Y0 48" - NH3Q12-112N000Y0	42" - NH3Q22-122N000Y0 48" - NH3Q12-122N000Y0	42" - NH3Q22-132N000Y0 48" - NH3Q12-132N000Y0	42" - NH3Q22-142N000Y0 48" - NH3Q12-142N000Y0	
		NST**	42" - NT3Q22-112N000Y0 48" - NT3Q12-112N000Y0	42" - NT3Q22-122N000Y0 48" - NT3Q12-122N000Y0	42" - NT3Q22-132N000Y0 48" - NT3Q12-132N000Y0	42" - NT3Q22-142N000Y0 48" - NT3Q12-142N000Y0	
		NSU**	42" - NU3Q22-112N000Y0 48" - NU3Q12-112N000Y0	42" - NU3Q22-122N000Y0 48" - NU3Q12-122N000Y0	42" - NU3Q22-132N000Y0 48" - NU3Q12-132N000Y0	42" - NU3Q22-142N000Y0 48" - NU3Q12-142N000Y0	
1	Slider Assy. w/Qwik Release w/ 4 NW Frame Brackets*	NSB**	42" - NL3Q22-111N000Y0 48" - NL3Q12-111N000Y0	42" - NL3Q22-121N000Y0 48" - NL3Q12-121N000Y0	42" - NL3Q22-131N000Y0 48" - NL3Q12-131N000Y0	42" - NL3Q22-141N000Y0 48" - NL3Q12-141N000Y0	1
		NSH**	42" - NH3Q22-111N000Y0 48" - NH3Q12-111N000Y0	42" - NH3Q22-121N000Y0 48" - NH3Q12-121N000Y0	42" - NH3Q22-131N000Y0 48" - NH3Q12-131N000Y0	42" - NH3Q22-141N000Y0 48" - NH3Q12-141N000Y0	
		NST**	42" - NT3Q22-111N000Y0 48" - NT3Q12-111N000Y0	42" - NT3Q22-121N000Y0 48" - NT3Q12-121N000Y0	42" - NT3Q22-131N000Y0 48" - NT3Q12-131N000Y0	42" - NT3Q22-141N000Y0 48" - NT3Q12-141N000Y0	
		NSU**	42" - NU3Q22-111N000Y0 48" - NU3Q12-111N000Y0	42" - NU3Q22-121N000Y0 48" - NU3Q12-121N000Y0	42" - NU3Q22-131N000Y0 48" - NU3Q12-131N000Y0	42" - NU3Q22-141N000Y0 48" - NU3Q12-141N000Y0	
1A	Frame Bracket (Welded)	Roadside	N/A	N/A	N/A	N/A	N/A
		Curbside	See Frame Bracket Replacement Kits - page 5				N/A
1AA	Frame Bracket (EZ-Align)	Roadside	See Frame Bracket Replacement Kits - page 5				N/A
		Curbside	See Frame Bracket Replacement Kits - page 5				N/A
1B	Hold Down Clip		42" - SLO893 48" - SLO893	42" - SLO893 48" - SLO893	42" - SLO893 48" - SLO893	42" - SLO893 48" - SLO893	4
1C	Center Pin Pull Assembly		42" - SLOA1277-01 48" - SLOA1277-01	42" - SLOA1277-01 48" - SLOA1277-01	42" - SLOA1277-01 48" - SLOA1277-01	42" - SLOA1277-01 48" - SLOA1277-01	1
1D	Clip		42" - SLOA1273 48" - SLOA1273	42" - SLOA1273 48" - SLOA1273	42" - SLOA1273 48" - SLOA1273	42" - SLOA1273 48" - SLOA1273	1
			42" - SLOA1273 48" - SLOA1273	42" - SLOA1273 48" - SLOA1273	42" - SLOA1273 48" - SLOA1273	42" - SLOA1273 48" - SLOA1273	
1E	Cotter Pin 3/16" x 11/2"		42" - XB-CTP-014-59 48" - XB-CTP-014-59	42" - XB-CTP-014-59 48" - XB-CTP-014-59	42" - XB-CTP-014-59 48" - XB-CTP-014-59	42" - XB-CTP-014-59 48" - XB-CTP-014-59	1
			42" - XB-CTP-014-59 48" - XB-CTP-014-59	42" - XB-CTP-014-59 48" - XB-CTP-014-59	42" - XB-CTP-014-59 48" - XB-CTP-014-59	42" - XB-CTP-014-59 48" - XB-CTP-014-59	
1F	Torsion Cam		42" - SLOA1274 48" - SLOA1274	42" - SLOA1274 48" - SLOA1274	42" - SLOA1274 48" - SLOA1274	42" - SLOA1274 48" - SLOA1274	2
			42" - SLOA1274 48" - SLOA1274	42" - SLOA1274 48" - SLOA1274	42" - SLOA1274 48" - SLOA1274	42" - SLOA1274 48" - SLOA1274	
1G	Lock Pin Hutch Style 1 5/8" Dia.		42" - SLOA1261 48" - SLOA1261	42" - SLOA1261 48" - SLOA1261	42" - SLOA1261 48" - SLOA1261	42" - SLOA1261 48" - SLOA1261	4
			42" - SLOA1238 48" - SLOA1238	42" - SLOA1238 48" - SLOA1238	42" - SLOA1238 48" - SLOA1238	42" - SLOA1238 48" - SLOA1238	
1H	Compression Spring		42" - XB-SPG-020-35 48" - XB-SPG-020-35	42" - XB-SPG-020-35 48" - XB-SPG-020-35	42" - XB-SPG-020-35 48" - XB-SPG-020-35	42" - XB-SPG-020-35 48" - XB-SPG-020-35	4
			42" - XB-SPG-020-35 48" - XB-SPG-020-35	42" - XB-SPG-020-35 48" - XB-SPG-020-35	42" - XB-SPG-020-35 48" - XB-SPG-020-35	42" - XB-SPG-020-35 48" - XB-SPG-020-35	
1J	Pull Handle		42" - SLOA1269-02 48" - SLOA1269-01	42" - SLOA1269-02 48" - SLOA1269-01	42" - SLOA1269-02 48" - SLOA1269-01	42" - SLOA1269-02 48" - SLOA1269-01	1
			42" - SLOA1269-02 48" - SLOA1269-01	42" - SLOA1269-02 48" - SLOA1269-01	42" - SLOA1269-02 48" - SLOA1269-01	42" - SLOA1269-02 48" - SLOA1269-01	
1K	Pin Pull Rod		42" - SLOA1239-01 48" - SLOA1239-02	42" - SLOA1239-01 48" - SLOA1239-02	42" - SLOA1239-01 48" - SLOA1239-02	42" - SLOA1239-01 48" - SLOA1239-02	4
			42" - SLOA1239-01 48" - SLOA1239-02	42" - SLOA1239-01 48" - SLOA1239-02	42" - SLOA1239-01 48" - SLOA1239-02	42" - SLOA1239-01 48" - SLOA1239-02	
1L	Washer 1/2" (Pin Pull Rod)		42" - XB-PW-016-85 48" - XB-PW-016-85	42" - XB-PW-016-85 48" - XB-PW-016-85	42" - XB-PW-016-85 48" - XB-PW-016-85	42" - XB-PW-016-85 48" - XB-PW-016-85	8
			42" - XB-PW-016-85 48" - XB-PW-016-85	42" - XB-PW-016-85 48" - XB-PW-016-85	42" - XB-PW-016-85 48" - XB-PW-016-85	42" - XB-PW-016-85 48" - XB-PW-016-85	
1M	Slider Pad 96" (Long)		42" - XB-SLOA1054 48" - XB-SLOA1054	42" - XB-SLOA1054 48" - XB-SLOA1054	42" - XB-SLOA1054 48" - XB-SLOA1054	42" - XB-SLOA1054 48" - XB-SLOA1054	2
			42" - XB-SLOA1054 48" - XB-SLOA1054	42" - XB-SLOA1054 48" - XB-SLOA1054	42" - XB-SLOA1054 48" - XB-SLOA1054	42" - XB-SLOA1054 48" - XB-SLOA1054	
1N	Spacer		42" - SLO523-07 48" - SLO523-07	42" - SLO523-07 48" - SLO523-07	42" - SLO523-07 48" - SLO523-07	42" - SLO523-07 48" - SLO523-07	1
			42" - SLO523-07 48" - SLO523-07	42" - SLO523-07 48" - SLO523-07	42" - SLO523-07 48" - SLO523-07	42" - SLO523-07 48" - SLO523-07	
1P	Self Tap Screw 5/16"-18 x 3/4"		42" - XB-STS-008-16 48" - XB-STS-008-16	42" - XB-STS-008-16 48" - XB-STS-008-16	42" - XB-STS-008-16 48" - XB-STS-008-16	42" - XB-STS-008-16 48" - XB-STS-008-16	16
			42" - XB-STS-008-16 48" - XB-STS-008-16	42" - XB-STS-008-16 48" - XB-STS-008-16	42" - XB-STS-008-16 48" - XB-STS-008-16	42" - XB-STS-008-16 48" - XB-STS-008-16	
1R	Bolt 1/2"-13 x 11/4"		42" - XB-HHC-001-33 48" - XB-HHC-001-33	42" - XB-HHC-001-33 48" - XB-HHC-001-33	42" - XB-HHC-001-33 48" - XB-HHC-001-33	42" - XB-HHC-001-33 48" - XB-HHC-001-33	8
			42" - XB-HHC-001-33 48" - XB-HHC-001-33	42" - XB-HHC-001-33 48" - XB-HHC-001-33	42" - XB-HHC-001-33 48" - XB-HHC-001-33	42" - XB-HHC-001-33 48" - XB-HHC-001-33	
1S	Lock Nut 1/2"-13		42" - XB-SLN-012-42 48" - XB-SLN-012-42	42" - XB-SLN-012-42 48" - XB-SLN-012-42	42" - XB-SLN-012-42 48" - XB-SLN-012-42	42" - XB-SLN-012-42 48" - XB-SLN-012-42	8
			42" - XB-SLN-012-42 48" - XB-SLN-012-42	42" - XB-SLN-012-42 48" - XB-SLN-012-42	42" - XB-SLN-012-42 48" - XB-SLN-012-42	42" - XB-SLN-012-42 48" - XB-SLN-012-42	

* NW = EZ-Align (Non-Welded) style and WA = Welded Alignment style frame brackets. ** NSB = Holland slider box rail style; NSH = Hutch slider box rail style; NST = TTMA slider box rail style; NSU = Utility slider box rail style.

NS-450 PARTS LIST *continued*

Suspension Components

ITEM NO.	DESCRIPTION	NS-450-16.0	NS-450-16.5	NS-450-17.0	NS-450-18.0	QTY.
2A	Equalizing Beam LH (bushed beam only)	90516991	90516991	90516991	90516991	2
2B	Axle Adapter LH (outside)	90001215	90001215	90001215	90001215	2
2C	Axle Adapter LH (inside)	90501350	90501350	90501350	90501350	2
2D***	Pivot Connection Wear Washer	90036177	90036177	90036177	90036177	8
2E***	Axle Bolt 1.125"-7 x 8.5" LG	93201051	93201051	93201051	93201051	8
2F***	Hex Lock Nut 1.125"-7	93400506	93400506	93400506	93400506	6
2G***	Bushing	90008149	90008149	90008149	90008149	12
2H***	Axle Connection Wear Washer	90036217	90036217	90036217	90036217	16
2J***	Pivot Bolt, Hex 1.125"-7 x 8.5" LG GR 8	93201069	93201069	93201069	93201069	2
3A	Equalizing Beam RH (bushed beam only)	90516992	90516992	90516992	90516992	2
3B	Axle Adapter RH (outside)	90001216	90001216	90001216	90001216	2
3C	Axle Adapter RH (inside)	90501351	90501351	90501351	90501351	2
4	Air Spring	90557271	90557272	90557272	90557273	4
4A	Air Spring Spacer	N/A	90045362	90045362	90045362	1‡
5	Shock Absorber	90045298	90044162	90045299	90045040	4
6***	Alignment Block	90008238	90008238	90008238	90008238	2
7***	Pivot Bolt Assembly	90508019	90508019	90508019	90508019	2
8***	Alignment Plate	90008234	90008234	90008234	90008234	4
9	Hex Bolt .75"-10 x 3.50"	93003597	93003597	93003597	93003597	8
10	Hex Lock Nut .75"-10	93400492	93400492	93400492	93400492	4
11	Hex Nut .75"-16	93400149	93400149	93400149	93400149	4
12	Hex Nut .50"-13	93400136	93400136	93400136	93400136	8
13	Washer .78"	93600077	93600077	93600077	93600077	8
14	Washer .53"	93600072	93600072	93600072	93600072	8
15	Square Nut .75"-10	93400367	93400367	93400367	93400367	4
16	Hex Bolt .75"-10 x 5.0"	93003633	93003633	93003633	93003633	4

***Replacement components should be purchased in bushing connection SRK kits listed on page 5.

‡ For NS-450 model only: 16.5" and 17.0" use one spacer; 18.0" uses two spacers.

Holland Technical/Customer Service Tel: 1-800-237-8932



GO THE DISTANCE.

HOLLAND USA, INC.
1950 Industrial Blvd. • P.O. Box 425 • Muskegon, MI 49443-0425
Phone 888-396-6501 • Fax 800-356-3929
www.thehollandgroupinc.com

Copyright © September 2004 • The Holland Group, Inc.

Holland USA, Inc. Facilities:

Denmark, SC Muskegon, MI
Dumas, AR Warrenton, MO
Holland, MI Wylie, TX

Ph: 888-396-6501 Fax: 800-356-3929

Holland International, Inc.

Holland, MI
Phone: 616-396-6501
Fax: 616-396-1511

Holland Hitch of Canada, Ltd.

Woodstock, Ontario • Canada
Phone: 519-537-3494
Fax: 800-565-7753

Holland Equipment, Ltd.

Norwich, Ontario • Canada
Phone: 519-863-3414
Fax: 519-863-2398

Holland Hitch Western, Ltd.

Surrey, British Columbia • Canada
Phone: 604-574-7491
Fax: 604-574-0244