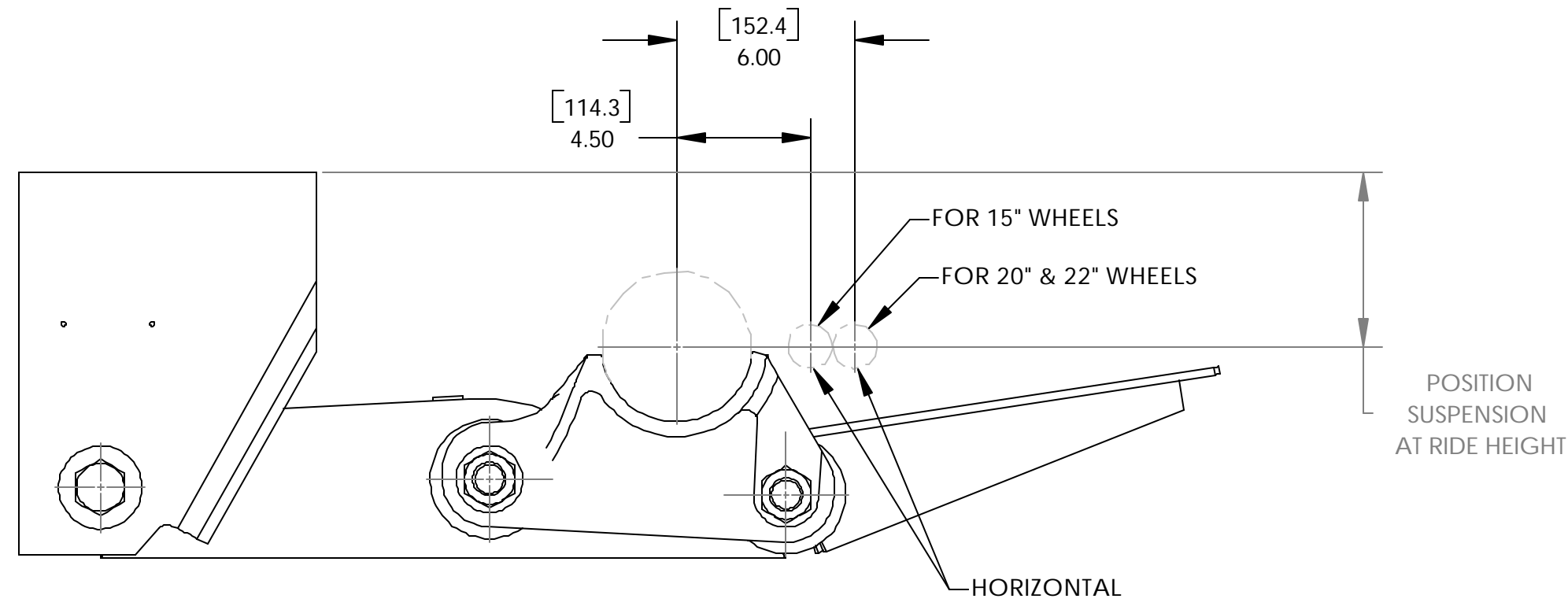
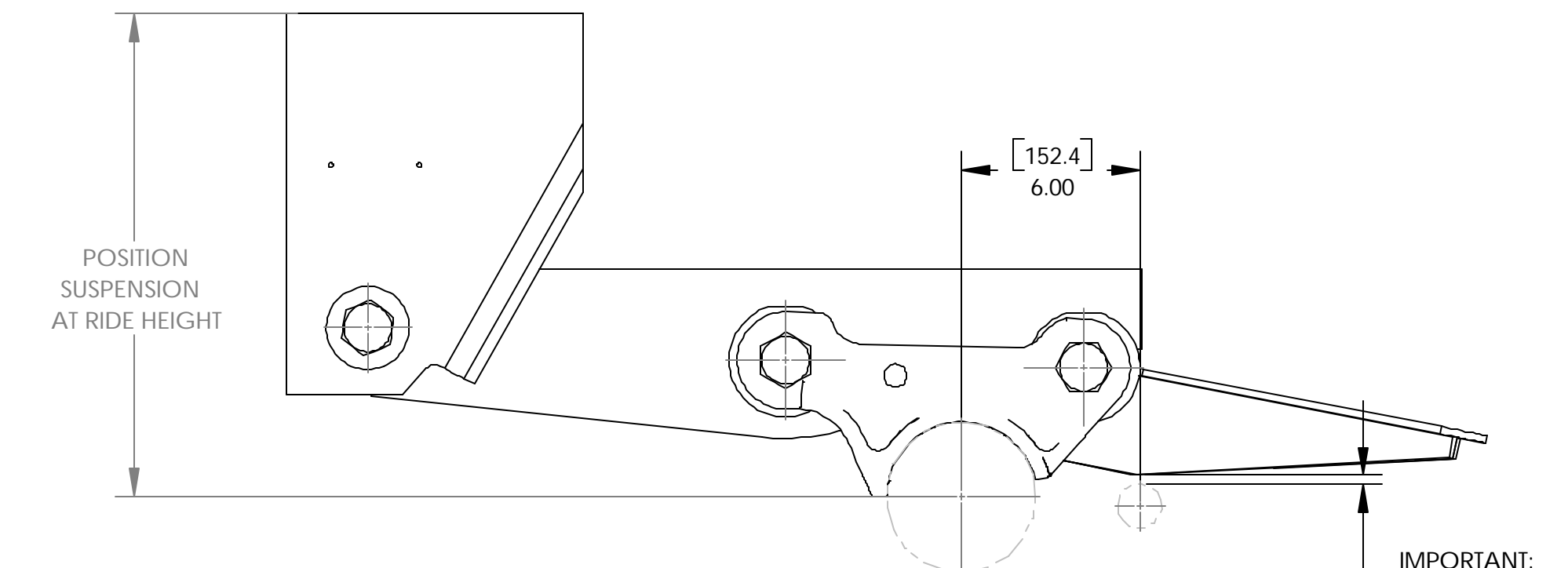


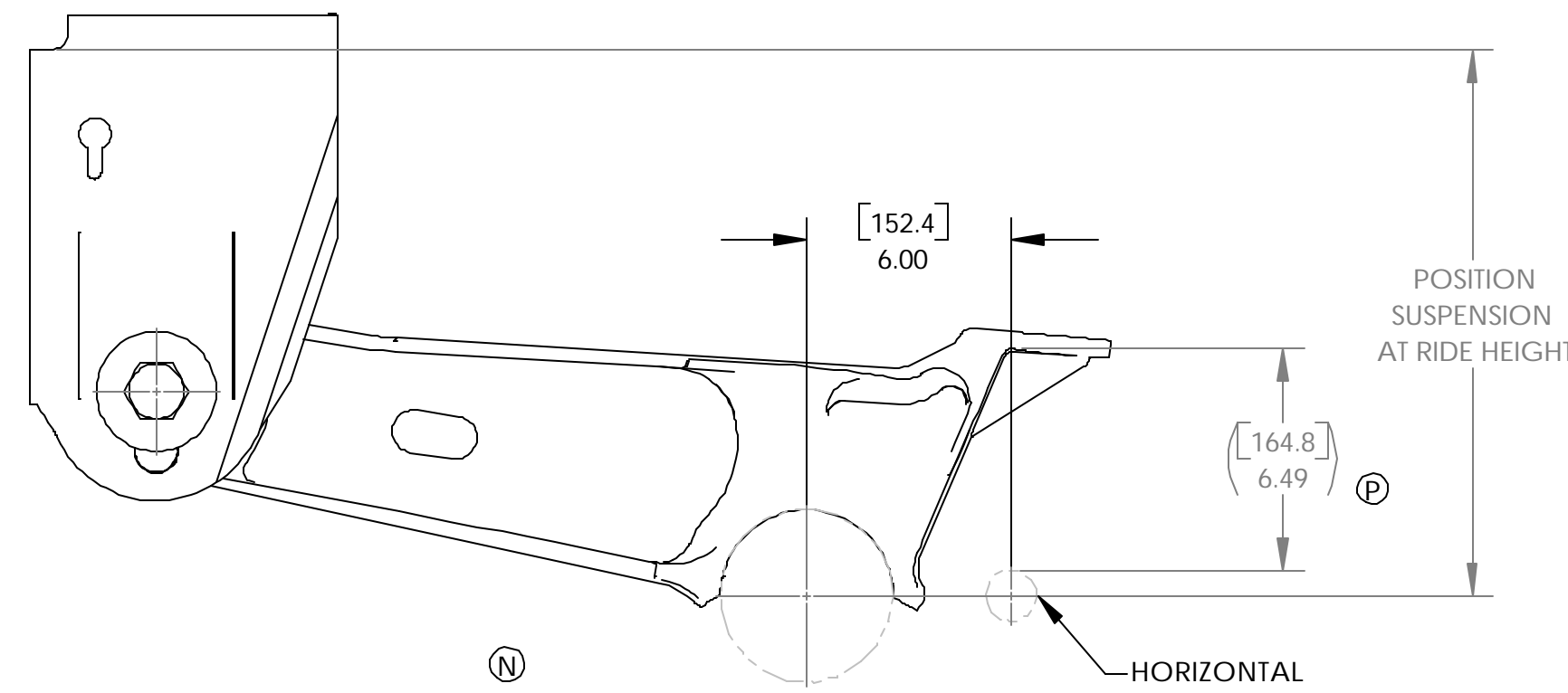
Ⓝ TYPICAL RL-228 & SA-226 CAM LOCATION FOR 20" & 22" WHEELS



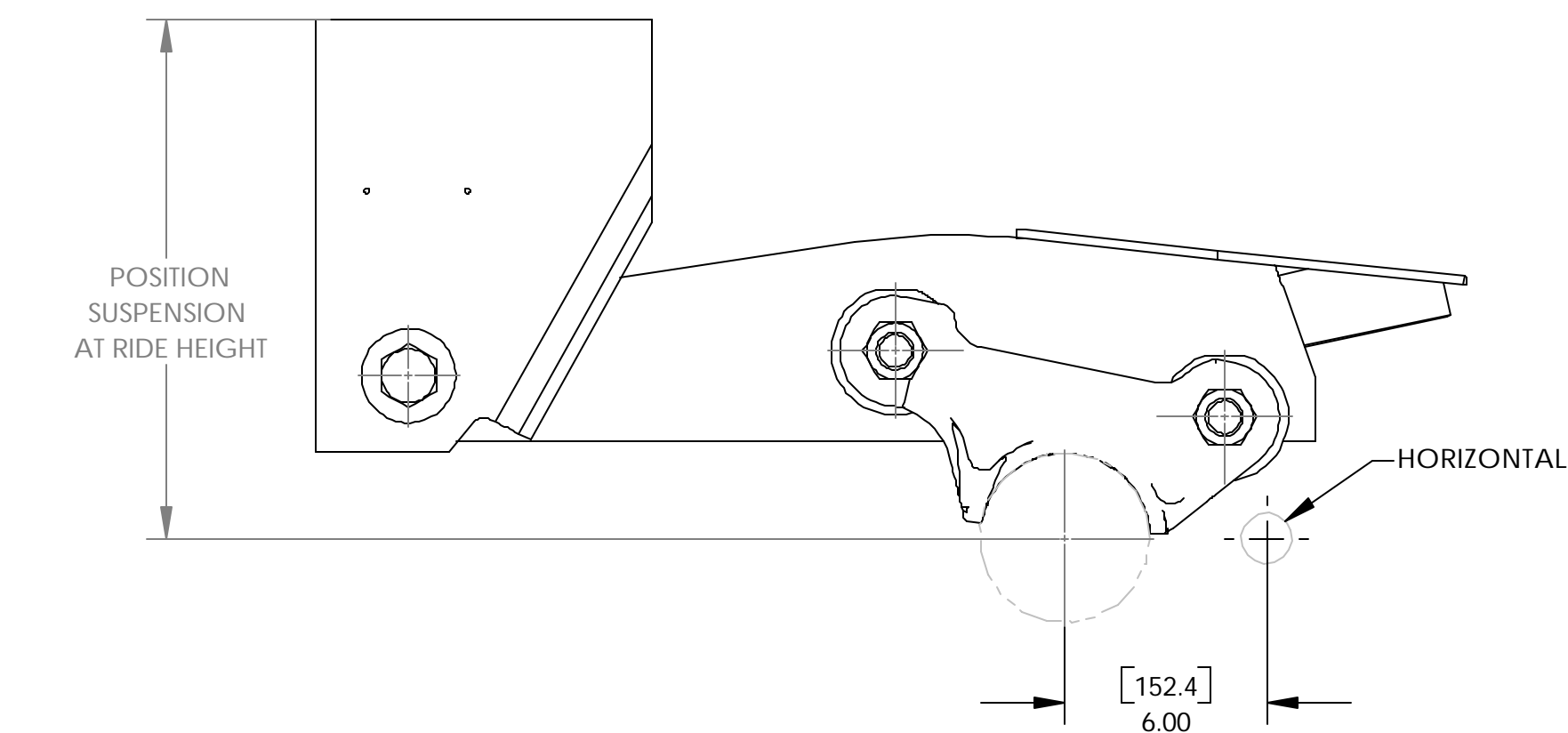
Ⓝ TYPICAL RLU-228, RLU-250 & RLU-300 CAM LOCATION



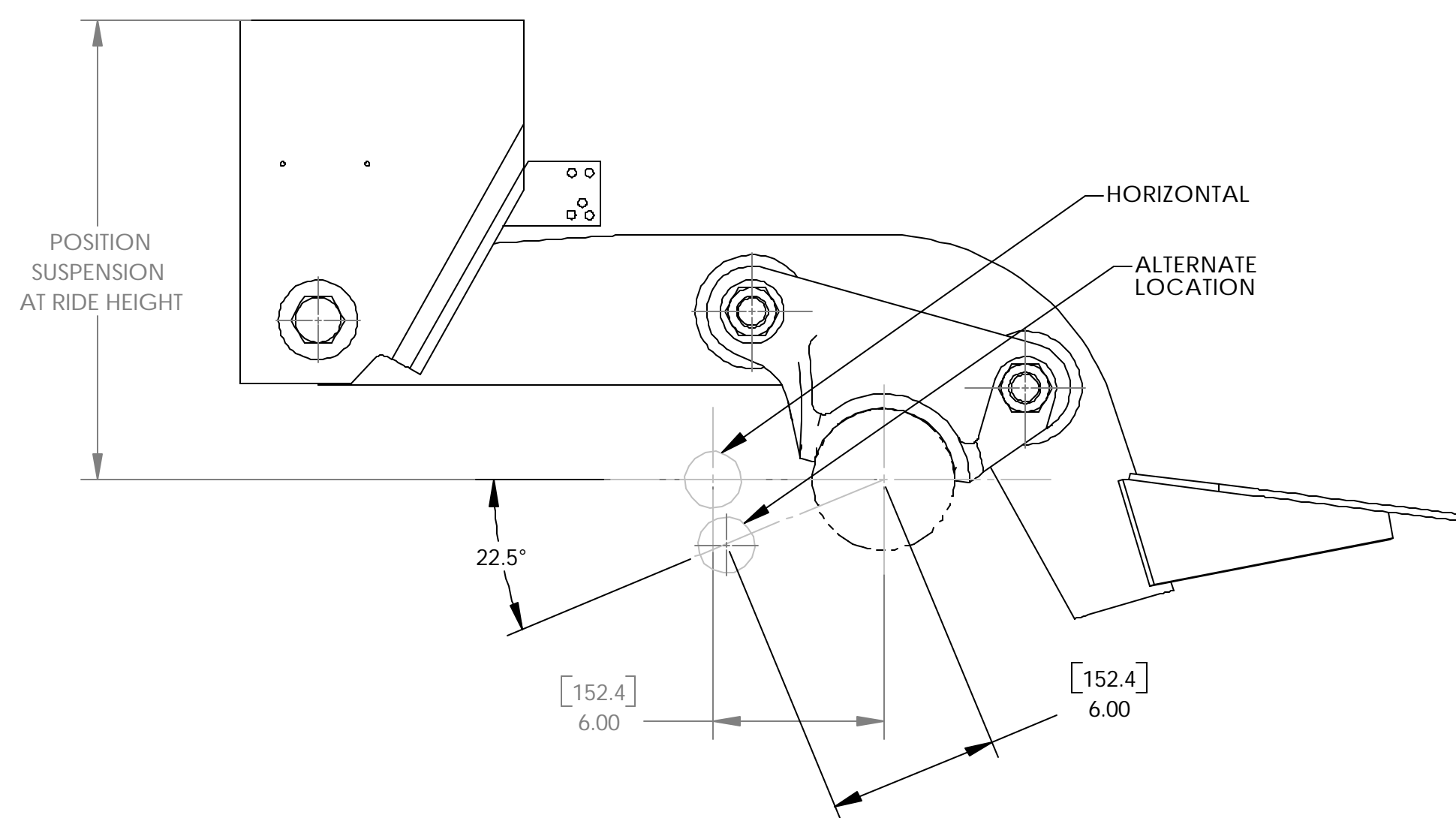
Ⓝ RL-230 & RL-250-SB CAM LOCATION FOR 20" & 22" WHEELS



Ⓝ TYPICAL CB 400 CAM LOCATION
Ⓟ FOR CB 400 USE A MINIMUM CAM LENGTH OF 20.13 [511.3], CAMS TO THE REAR.



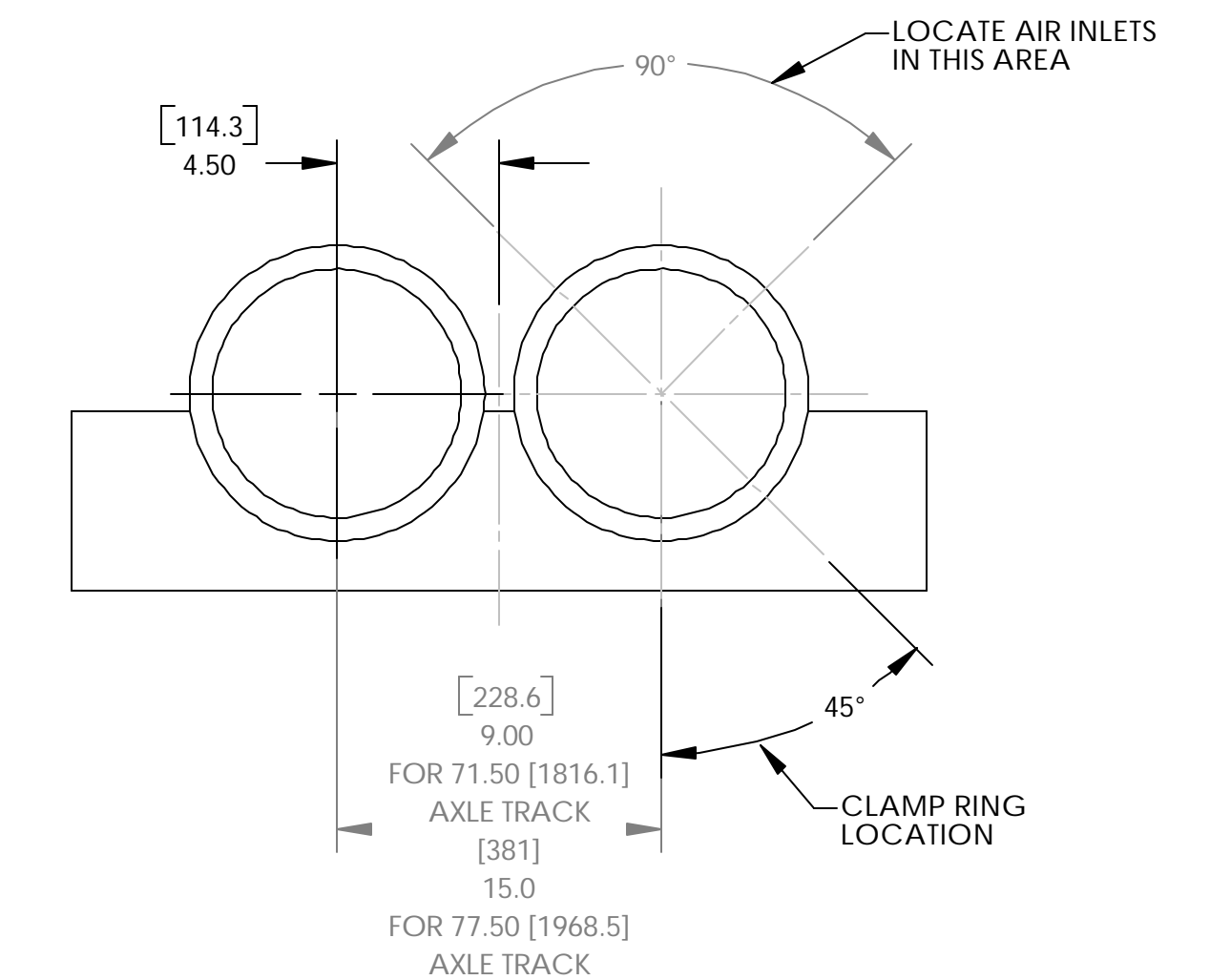
Ⓝ TYPICAL NS-400 & NS-450 CAM LOCATION FOR 20" & 22" WHEELS



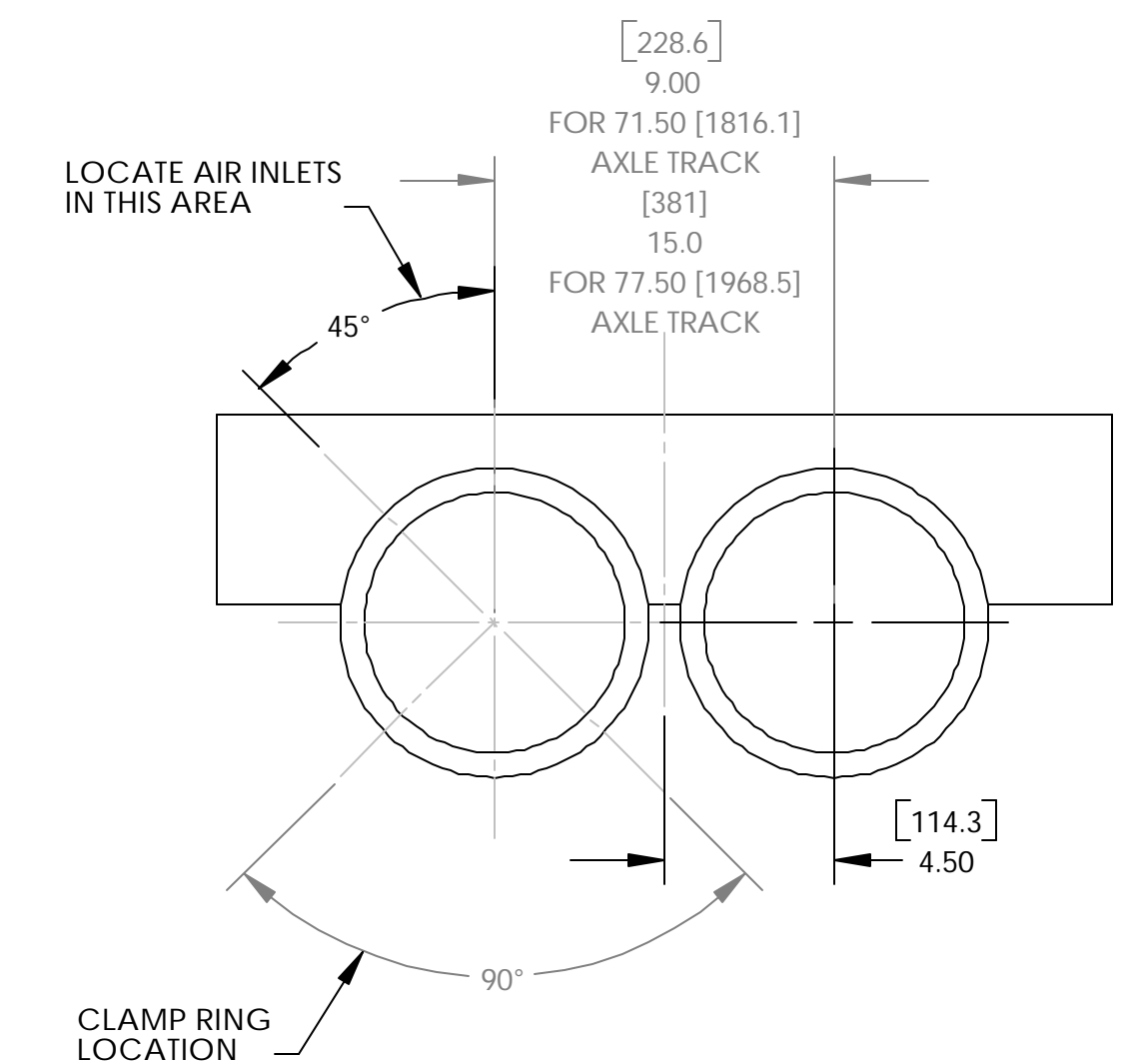
Ⓝ TYPICAL RL-250 & RL-300 CAM LOCATION FOR 20" & 22" WHEELS

CHANGE RECORD

LTR.	WAS	BY	E.C.N.	APRV	DATE
E	ADDED VIEWS FOR CAM LOCATIONS ON ARU-92 AND 93 MODEL SUSPENSIONS FOR 15, 20 AND 22" WHEELS; ALSO ADDED NOTE #7	AL	4022A		17SEP96
F	RLU-228 WAS ARU-93	TN	7304	SH	
G	RL-250 WAS AR-250	PJM	8274		
H	REMOVED AR-92 & REPLACED WITH RL-230	CR	9269	GG	13JUN01
J	REDRAWN IN SOLIDWORKS; REMOVED AR-93, RL-196, AR-90, AR-250; ADDED RL-300 & RL-250	CJS	X-1078	SH	21NOV01
K	UPDATED VERBAGE PER MARK-UPS; DRAWING SIZE B WAS C	CJS	X-1090	SH	11DEC01
L	'NS-SERIES' ADDED TO NOTE; ADDED DIM 6.00	BJB	X-1099	SH	07JAN02
M	ADDED RL-228, SA-226, 400 & 450 VIEWS	CJS	HN11092	PT	13MAR02
N	UPDATED ALL VIEWS TO SHOW ALIGNMENT CONNECTION; REMOVED SLACK ADJ. AND BRAKES FROM ALL CAM LOCATION VIEWS; ADDED DIM. POSITION SUSPENSION AT RIDE HEIGHT TO ALL CAM LOCATION VIEWS; REMOVED ALL HEIGHT CONTROL BRACKETS AND HOLES FROM FRAME BRACKETS; ADDED VIEW WITH BRAKE TO THE REAR; ADDED XL-AR352-02; XL-AR352-01 OBSOLETE CODE 02 REPLACED BY XL-AR352-02	CR	26094	SH	21JAN04
P	ADDED NOTE TO CB 400 CAM LOCATION VIEW, ADDED DIM (6.49); OBSOLETE CODE 02 XL-AR352-02 REPLACED BY XL-AR352-03; XL-AR352-03 WAS XL-AR352-02	CR	28251	GG	29MAR04



Ⓝ TYPICAL BRAKE CHAMBER SPACING WHEN CAM IS IN FRONT OF AXLE, BRAKES ARE ON TOP.



Ⓝ TYPICAL BRAKE CHAMBER SPACING WHEN CAM IS TO THE REAR, BRAKES ARE UNDERNEATH AXLE.

UNSPECIFIED TOLERANCES FOR DIMENSIONS		WEIGHT:	THE HOLLAND GROUP, INC.
ALL DIMS SHOWN ARE IN INCHES MILLIMETERS SHOWN IN BRACKETS []		SCALE: 1:5	
INCH	FRACTIONAL OR NO DECIMAL	[MM]	TITLE: BRAKE CHAMBER / CAM LOCATION
± 1/8	ONE PLACE (X)	(± 1.52)	MATERIAL: SEE DETAILS
± .060	TWO PLACE (XX)	(± 0.76)	PART NUMBER: 10000196
± .030	THREE PLACE (XXX)	(± 0.25)	REV. P
± .010	ANGLES	(± 1°)	
± 1°			

THIS DOCUMENT CONTAINS PROPRIETARY CONFIDENTIAL INFORMATION OWNED BY THE HOLLAND GROUP AND ITS SUBSIDIARY COMPANIES. THIS DOCUMENT AND THE INFORMATION IN IT ARE NOT TO BE USED, DISCLOSED OR REPRODUCED WITHOUT THE EXPRESS WRITTEN PERMISSION OF THE OWNER.