

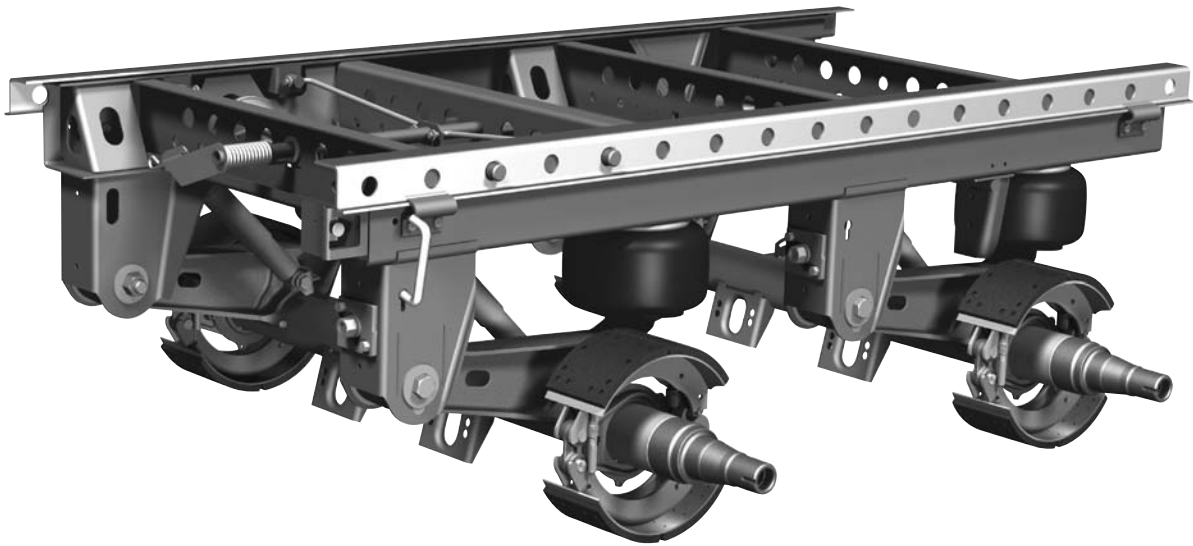


# CB400/4000

## PARTS LIST

### CB400/4000 Suspension/Slider for Van and Reefer Trailer Applications

Suspension Model Identification, Service  
Repair Kits (SRKs) and Parts List Information



## CONTENTS

|  | Page |  | Page |
|--|------|--|------|
| Warranty.....  | 1    | CB4000 Suspension Axle Assembly.....     | 7    |
| Model Identification.....                                | 2    | CB400/4000 Suspension Exploded View..... | 8    |
| Model Nomenclature.....                                  | 2    | CB400/4000 Suspension Parts List.....    | 9    |
| Verification of Suspension Model.....                    | 3    | CB400/4000 Air Control Parts.....        | 9    |
| Additional Suspension Model Verification Procedures..... | 3    | CB400/4000 Slider Box Exploded View..... | 10   |
| Slider Box Size Identification.....                      | 4    | CB400/4000 Slider Box Parts List.....    | 11   |
| Identification of Body Rail Style.....                   | 4    | Contact Information.....                 | 12   |
| Service Repair Kits (SRK).....                           | 5    |  |      |

## WARRANTY

Refer to the complete warranty for the country in which the product will be used. A copy of the written warranty XL-WC113-02 is included with the product as well as on the SAF-HOLLAND Web Site ([www.safholland.us](http://www.safholland.us)).

*For Maintenance Information, refer to  
CB400/4000 Maintenance Manual  
(Part No. XL-AR368).*

# SERIAL NUMBER TAG INFORMATION

## Model Identification

The CB400/4000 Suspension Serial Tag is located on the rear crossmember (FIGURE 1).

**NOTE:** CB400 suspension does not have axles; the CB4000 suspension includes axles.

**NOTE:** For axle end/brake components replacement contact the axle manufacturer.

**NOTE:** This manual applies to the suspension model listed on the front cover. However, we urge you to determine your specific model number, write that information below and refer to it when obtaining information or replacement parts.

**NOTE:** Refer to the serial number tag attached to the slider rear crossmember for information.

Model Number \_\_\_\_\_

Parts Number \_\_\_\_\_

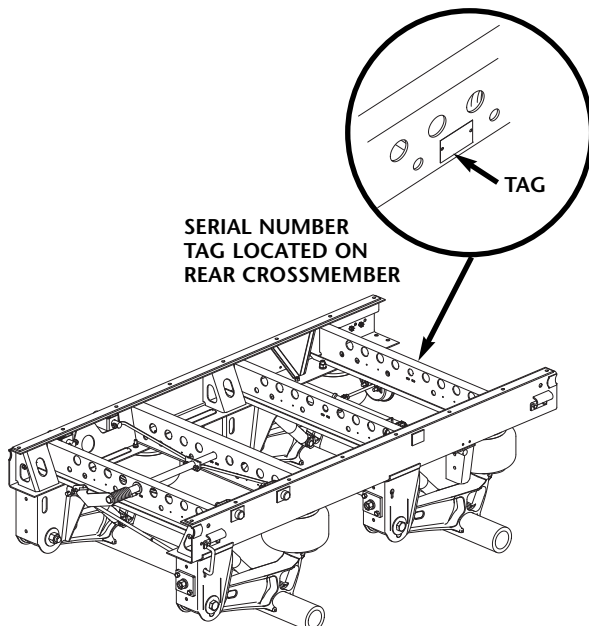
Serial Number \_\_\_\_\_

In Service Date \_\_\_\_\_

## Model Nomenclature

The sample tag shown below will help you interpret the information on the SAF-HOLLAND, USA, Inc. serial number tag. The model number is on the first line along with the suspension capacity. The second line contains the serial number and the third line has the parts list numbers (FIGURE 2).

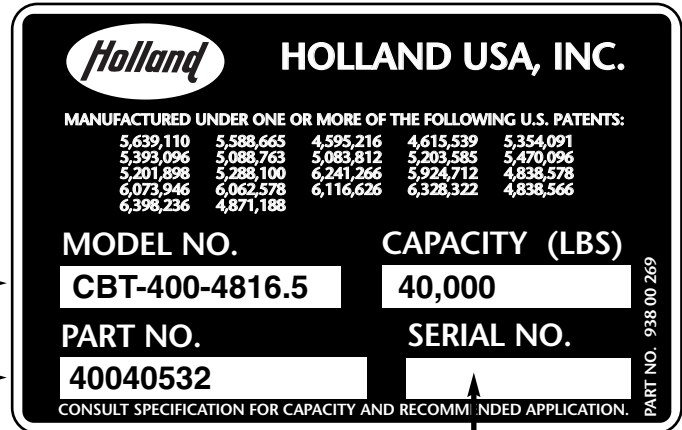
FIGURE 1 Serial Number Tag Location



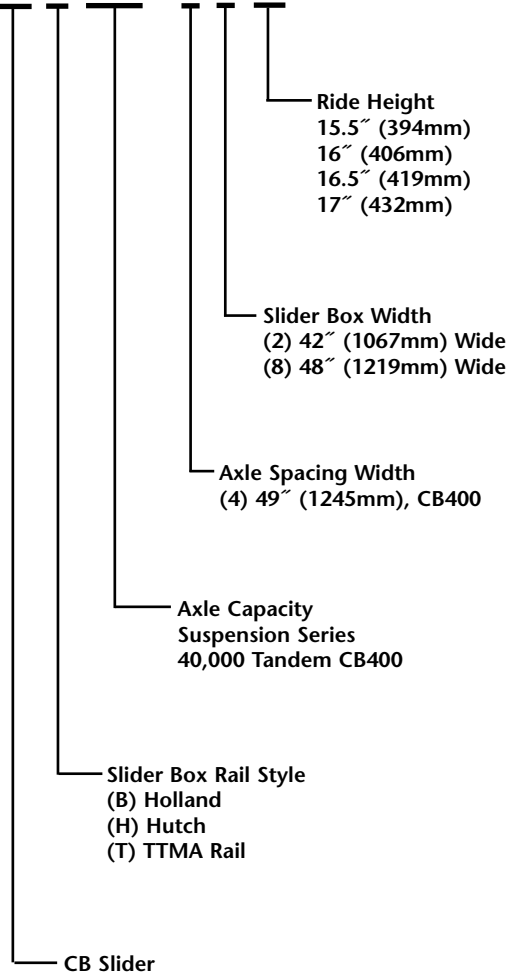
## Model Nomenclature

The sample tag shown below will help you interpret the information on the SAF-HOLLAND, USA, Inc. serial number tag. The model number is on the first line along with the suspension capacity. The second line contains the serial number and the third line has the parts list numbers (FIGURE 2).

FIGURE 2 Serial Number Tag



CB B 400 - 4 8 16

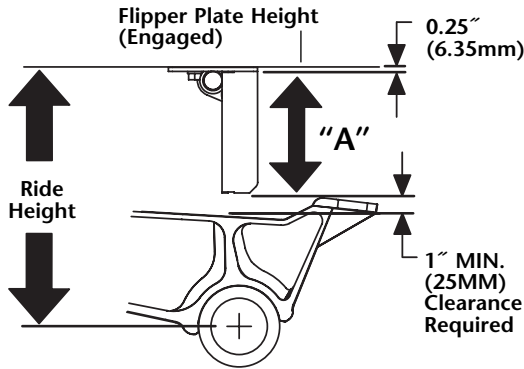


# SUSPENSION MODEL IDENTIFICATION

## Verification of Suspension Model

1. If the serial tag is not legible or is unavailable, verify the ride height by measuring the PosiLok™ flipper plate height (“A” FIGURE 3) and compare it to the ride height from Table 1 below. If the unit is not equipped with a PosiLok™ feature, refer to FIGURE 4.

**FIGURE 3**  
Flipper Plate



**NOTE:** “A” dimension does not include mounting plate.

**TABLE 1. RIDE HEIGHT AND FLIPPER PLATE HEIGHT**

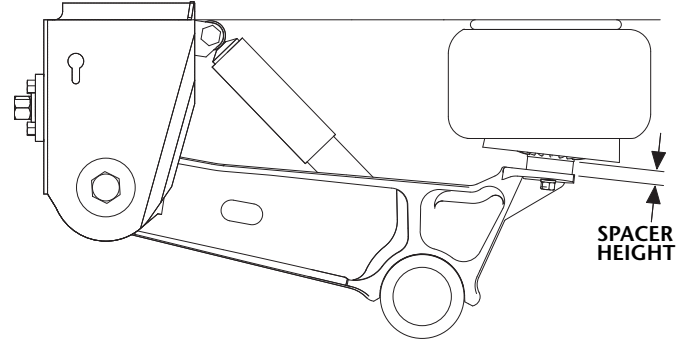
| Model No.       | Ride Height   | “A” Flipper Plate Height |
|-----------------|---------------|--------------------------|
| CB400/4000-15.5 | 15.5" (394mm) | 7.5" (191mm)             |
| CB400/4000-16   | 16.0" (406mm) | 8.0" (203mm)             |
| CB400/4000-16.5 | 16.5" (419mm) | 8.5" (216mm)             |
| CB400/4000-17   | 17.0" (432mm) | 9.0" (229mm)             |
| CB400/4000-18   | 18.0" (457mm) | 9.75" (248mm)            |

**NOTE:** Flipper plate height does not include mounting plate.

## Additional Suspension Model Verification Procedures

1. Measure the height of the spacer under the air spring (FIGURE 4) and then compare it to a value in the *Spacer Height Charts* (this page).

**FIGURE 4**



2. After determining the spacer height, determine the shock part number and cross reference the information in the chart to confirm the model number.

## Spacer Height Charts

### SwingAlign

| MODEL NO.       | FRAME BRACKET HEIGHT | SPACER HEIGHT  | SHOCK ABS. PART NO. |
|-----------------|----------------------|----------------|---------------------|
| CB400/4000-15.5 | 10.0" (254mm)        | 0.188" (4.8mm) | 900 45 298          |
| CB400/4000-16   | 10.0" (254mm)        | 0.188" (4.8mm) | 900 45 298          |
| CB400/4000-16.5 | 10.0" (254mm)        | 0.62" (15.8mm) | 900 44 162          |
| CB400/4000-17   | 10.0" (254mm)        | 1.22" (31mm)   | 900 44 162          |
| CB400/4000-18   | 10.0" (254mm)        | -              | 900 45 040          |

### Welded

| MODEL NO.       | FRAME BRACKET HEIGHT | SPACER HEIGHT  | SHOCK ABS. PART NO. |
|-----------------|----------------------|----------------|---------------------|
| CB400/4000-15.5 | 10.0" (254mm)        | 0.188" (4.8mm) | 900 45 298          |
| CB400/4000-16   | 10.0" (254mm)        | 0.188" (4.8mm) | 900 45 298          |
| CB400/4000-16.5 | 10.0" (254mm)        | 0.62" (15.8mm) | 900 44 162          |
| CB400/4000-17   | 10.0" (254mm)        | 1.22" (31mm)   | 900 44 162          |
| CB400/4000-18   | 10.0" (254mm)        | -              | 900 45 040          |

# SLIDER BOX SIZE IDENTIFICATION

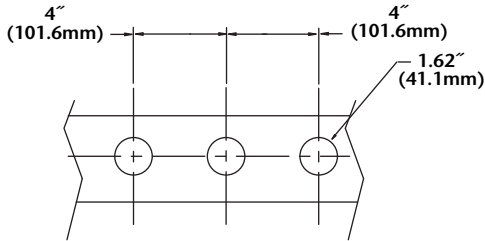
## Identification of Body Rail Style

To correctly identify your trailer's body rail style, and to determine compatibility between Hutch and Holland slider boxes, measure the pin size and hole spacing.

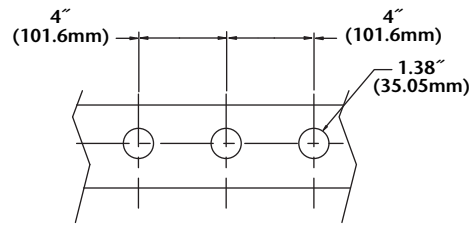
FIGURE 5

## Body Rail Identification

### HUTCH

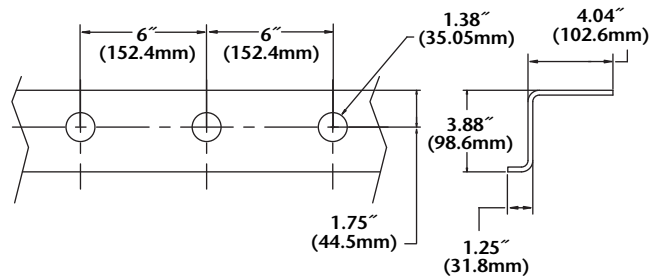


### TTMA



Hutch spacing with Holland size pins.

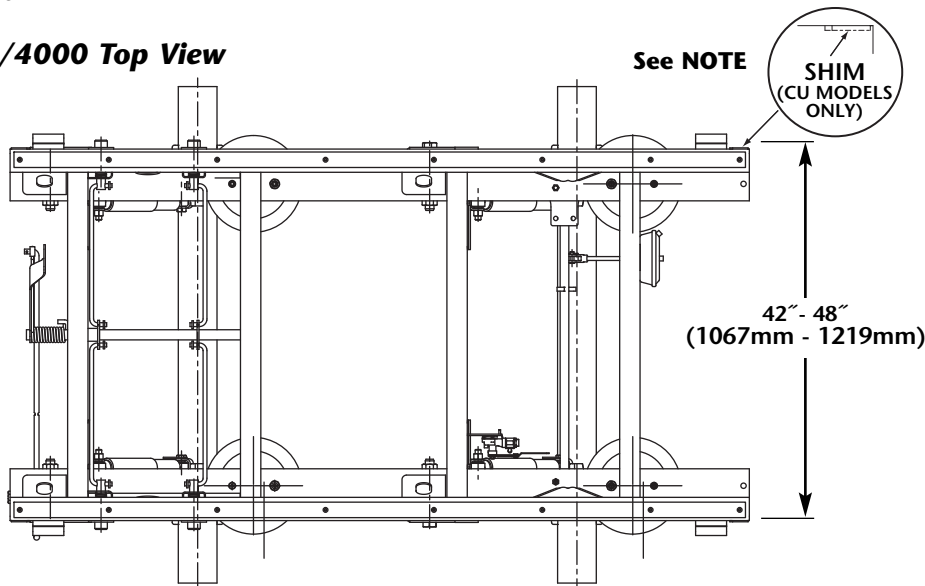
### HOLLAND



# SLIDER BOX SIZE IDENTIFICATION

FIGURE 6

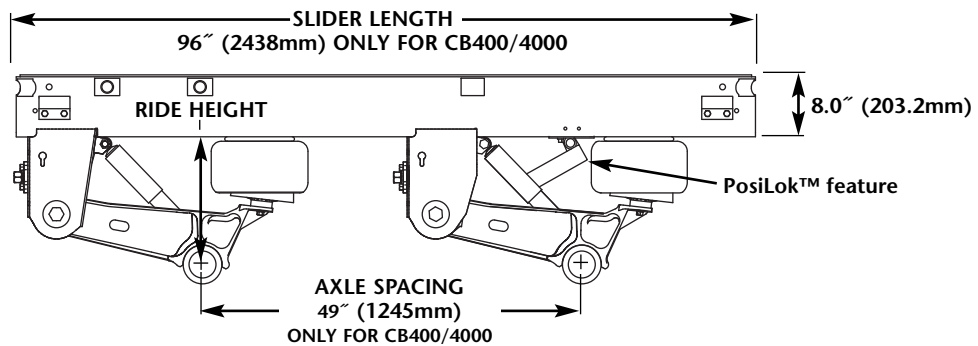
## CB400/4000 Top View



**NOTE:** Only CU models have shims mounted on the inside of the frame rails; other models have shims mounted on the outside of the frame rails. Shim thickness is not included in the 42" or 48" measurement.

FIGURE 7

## CB400/4000 Side View



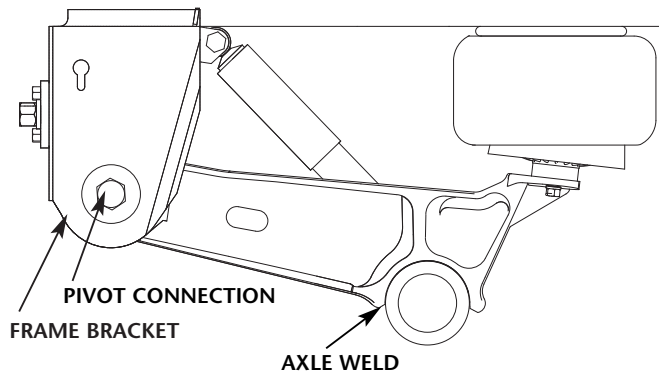
## SERVICE REPAIR KITS (SRK)

The CB400/4000 suspension provides Service Repair Kits (SRK's) for the replacement of pivot connections and frame brackets (FIGURE 8).

**NOTE:** The Holland Bushing Service tool, part no. 505 44 015, is available to ease removal and replacement of bushings. Contact your Holland distributor or refer to this Parts List for details.

FIGURE 8

### Pivot Connection and Axle Weld

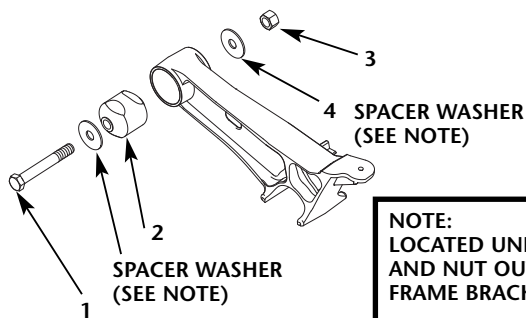


### Pivot Connection Replacement Kit

SRK-530

481 00 394

| ITEM | PART NO.   | DESCRIPTION              | QTY. |
|------|------------|--------------------------|------|
| 1    | 932 01 070 | Rod Bolt 1 1/8" - 7 x 8" | 2    |
| 2    | 900 08 247 | Rubber Bushing           | 2    |
| 3    | 934 00 506 | Lock Nut 1 1/8" - 7      | 2    |
| 4    | 936 00 553 | Washer                   | 4    |

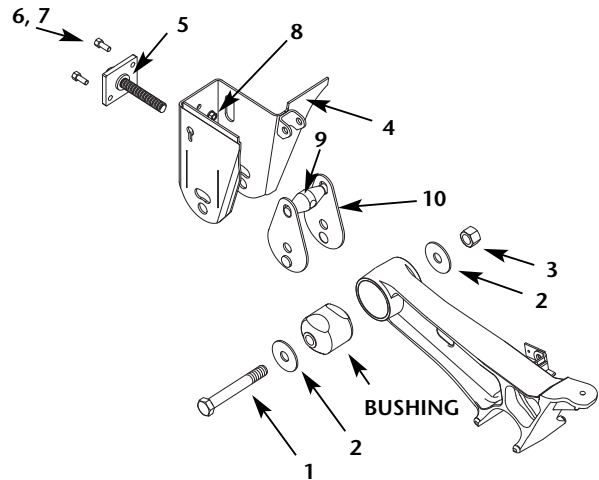


### SwingAlign™ Frame Bracket Replacement Kit

SRK-531:

481 00 395

| ITEM | PART NO.      | DESCRIPTION                  | QTY. |
|------|---------------|------------------------------|------|
| 1    | 932 01 070    | Rod Bolt 1 1/8" - 7 x 8"     | 2    |
| 2    | 936 00 553    | Washer                       | 4    |
| 3    | 934 00 506    | Lock Nut 1 1/8" - 7          | 2    |
| 4    | 905 21 742    | Frame Bracket, Roadside      | 1    |
| 5    | 905 48 007    | Threaded Rod Assembly        | 1    |
| 6    | XB-HHC-001-33 | Bolt, Hex 1/2" - 13 x 1 3/4" | 2    |
| 7    | 936 00 072    | Washer, Lock 1/2"            | 2    |
| 8    | 934 00 136    | Nut, Hex 1/2" - 13           | 2    |
| 9    | 900 45 491    | SwingAlign™ Yoke             | 1    |
| 10   | 905 31 339    | Alignment Plate              | 2    |

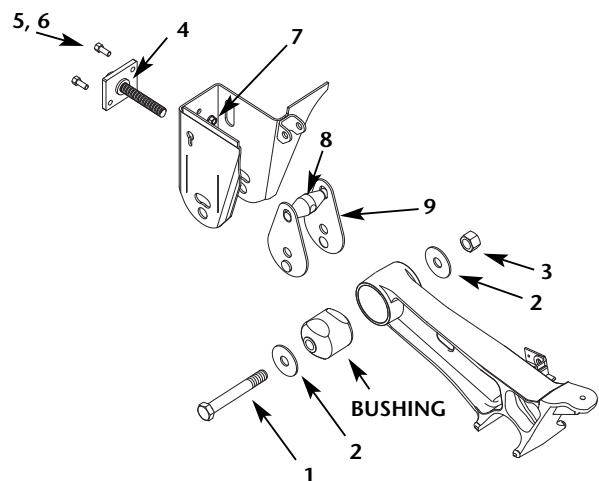


### SwingAlign™ Replacement Kit

SRK-542:

481 00 406

| ITEM | PART NO.      | DESCRIPTION                  | QTY. |
|------|---------------|------------------------------|------|
| 1    | 932 01 070    | Rod Bolt 1 1/8" - 7 x 8"     | 1    |
| 2    | 936 00 553    | Washer                       | 4    |
| 3    | 934 00 506    | Lock Nut 1 1/8" - 7          | 1    |
| 4    | 905 48 007    | Threaded Rod Assembly        | 1    |
| 5    | XB-HHC-001-33 | Bolt, Hex 1/2" - 13 x 1 3/4" | 2    |
| 6    | 936 00 072    | Washer, Lock 1/2"            | 2    |
| 7    | 934 00 136    | Nut, Hex 1/2" - 13           | 2    |
| 8    | 900 45 491    | SwingAlign™ Yoke             | 1    |
| 9    | 905 31 339    | Alignment Plate              | 2    |



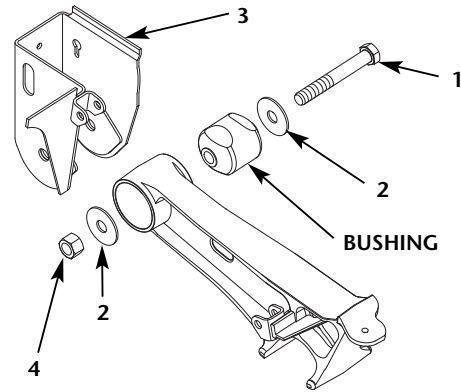
# SERVICE REPAIR KITS (SRK) *continued*

## Fixed Frame Bracket Replacement Kit

SRK-532 481 00 396

| ITEM | PART NO.   | DESCRIPTION              | QTY. |
|------|------------|--------------------------|------|
| 1    | 932 01 070 | Rod Bolt 1 1/8" - 7 x 8" | 2    |
| 2    | 936 00 553 | Washer                   | 4    |
| 3    | 905 21 743 | Frame Bracket, Curbside  | 1    |
| 4    | 934 00 506 | Lock Nut 1 1/8" - 7      | 2    |

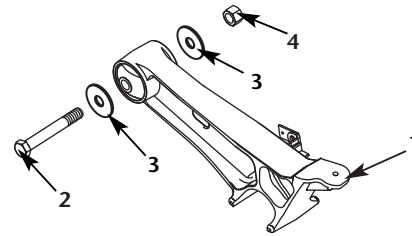
**NOTE:**  
IF BOTH BEAMS AND AXLE ASSEMBLY ARE REQUIRED,  
CONTACT SAF-HOLLAND, USA, INC. CUSTOMER SERVICE  
(888)396-6501. REFER TO DRAWING 905 48 150\_TAB.



## Roadside Equalizing Beam Replacement Kit

SRK-585 481 00 449

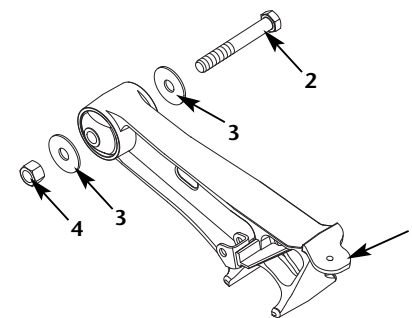
| ITEM | PART NO.   | DESCRIPTION                        | QTY. |
|------|------------|------------------------------------|------|
| 1    | 905 48 008 | Equalizing Beam, Roadside (LH)     | 1    |
| 2    | 932 01 070 | Pivot Bolt 1 1/8" - 7 x 8" Gr 8    | 2    |
| 3    | 936 00 553 | Washer                             | 4    |
| 4    | 934 00 506 | Hex Lock Nut 1 1/8" - 7 Gr C       | 2    |
| 5    | XL-AR368   | Literature Kit, Maintenance Manual | 1    |
| 6    | XL-AR369   | Literature Kit, Parts List Manual  | 1    |



## Curbside Equalizing Beam Replacement Kit

SRK-586 481 00 450

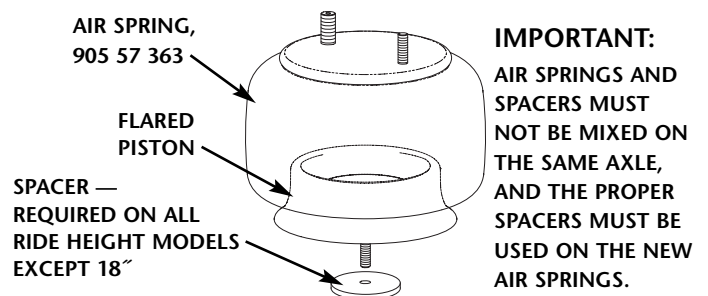
| ITEM | PART NO.   | DESCRIPTION                        | QTY. |
|------|------------|------------------------------------|------|
| 1    | 905 48 009 | Equalizing Beam, Curbside (RH)     | 1    |
| 2    | 932 01 070 | Pivot Bolt 1 1/8" - 7 x 8" Gr 8    | 2    |
| 3    | 936 00 553 | Washer                             | 4    |
| 4    | 934 00 506 | Hex Lock Nut 1 1/8" - 7 Gr C       | 2    |
| 5    | XL-AR368   | Literature Kit, Maintenance Manual | 1    |
| 6    | XL-AR369   | Literature Kit, Parts List Manual  | 1    |



## Air Spring Replacement Kit

| RISE HEIGHT | REPLACEMENT KIT PART NO.* |
|-------------|---------------------------|
| 15.5"       | 481 00 492                |
| 16"         | 481 00 492                |
| 16.5"       | 481 00 493                |
| 17"         | 481 00 494                |
| 18"         | 481 00 495                |

\* One kit needed per air spring.



## Pivot Connection Service Repair Kit

SRK-607 481 00 471

| ITEM | PART NO.   | DESCRIPTION                     | QTY. |
|------|------------|---------------------------------|------|
| 1    | 932 01 070 | Pivot Bolt 1 1/8" - 7 x 8" Gr 8 | 2    |
| 2    | 934 00 506 | Hex Lock Nut 1 1/8" - 7 Gr C    | 2    |
| 3    | 936 00 553 | Washer                          | 4    |

**NOTE:** A Service Repair Kit must be used with each axle and beam assembly.

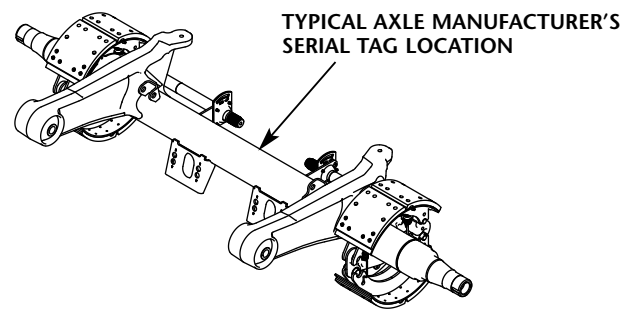
**NOTE:** For Service Repair Kits and instructions for a CB2300 with PosiLift, see XL-AR462.

## CB4000 SUSPENSION AXLE ASSEMBLY

---

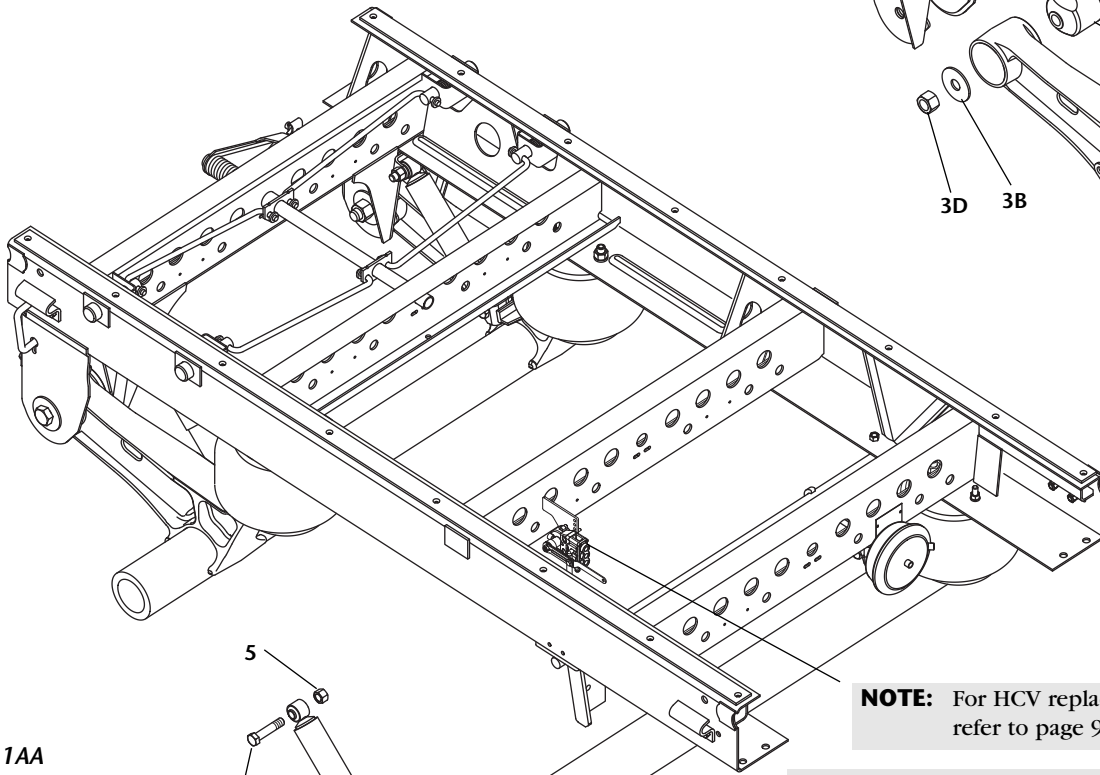
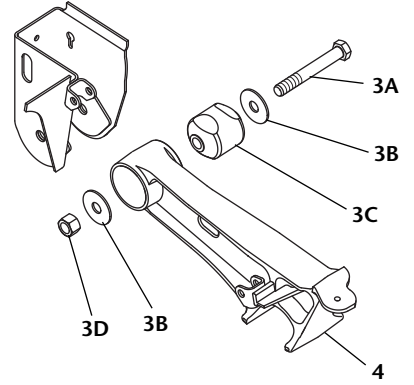
**NOTE:** For axle assembly replacement, contact SAF-HOLLAND, USA, Inc. Customer Service: 888-396-6501.

**NOTE:** For axle end/brake components replacement contact the axle manufacturer.



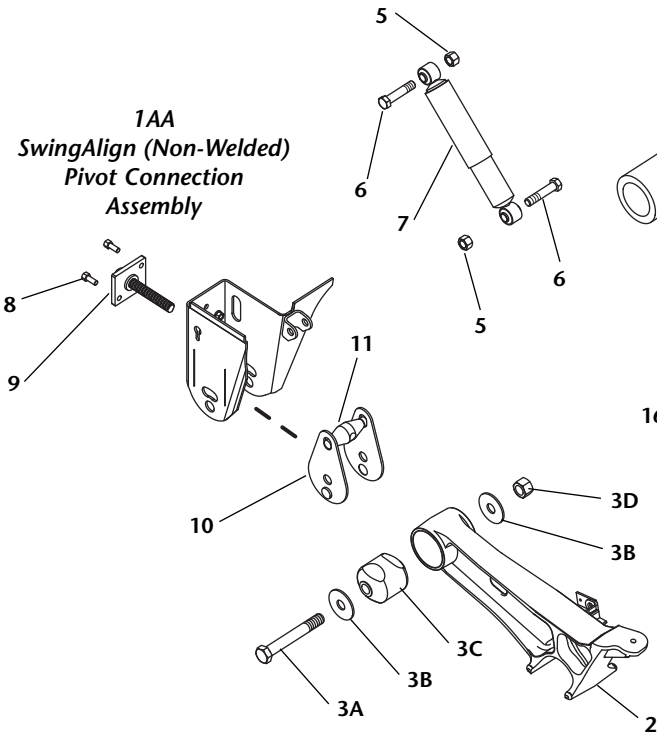
# CB400/4000 SUSPENSION EXPLODED VIEW

**1A**  
Welded Alignment  
Pivot Connection  
Assembly



**NOTE:** For HCV replacement, refer to page 9.

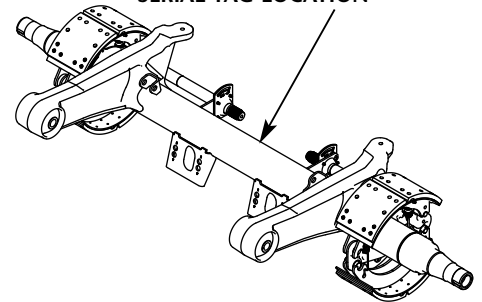
**1AA**  
SwingAlign (Non-Welded)  
Pivot Connection  
Assembly



**NOTE:** Bushing connection kits and frame bracket replacement kits should be purchased as SRKs listed on pages 5 and 6.

**NOTE:** For air release pin puller, contact Customer Service Department at 1-888-396-6501.

**TYPICAL AXLE MANUFACTURER'S SERIAL TAG LOCATION**



**NOTE:** For axle assembly replacement, contact SAF-HOLLAND, USA, Inc. Customer Service: 888-396-6501.

**NOTE:** For axle end/brake components replacement contact the axle manufacturer.



# CB400/4000 SUSPENSION PARTS LIST *continued*

## Suspension Components

| ITEM NO. | DESCRIPTION                                      | CB400-15.5    | CB400-16.0    | CB400-16.5    | CB400-17.0    | CB400-18.0    | QTY. |
|----------|--|---------------|---------------|---------------|---------------|---------------|------|
| 1A       | Frame Bracket (Welded)                           | 481 00 396    | 481 00 396    | 481 00 396    | 481 00 396    | 481 00 396    | 2    |
| 1AA      | Frame Bracket (SwingAlign)                       | 481 00 395    | 481 00 395    | 481 00 395    | 481 00 395    | 481 00 395    | 2    |
| 2        | Equalizing Beam LH (roadside - bushed beam)      | 481 00 449    | 481 00 449    | 481 00 449    | 481 00 449    | **            | 2    |
| 3A*      | Pivot Bolt 1-1/8"-7 x 8.0" LG GR 8               | 932 01 070    | 932 01 070    | 932 01 070    | 932 01 070    | 932 01 070    | 4    |
| 3B*      | Pivot Connection Washer                          | 936 00 553    | 936 00 553    | 936 00 553    | 936 00 553    | 936 00 553    | 8    |
| 3C*      | Bushing  | 481 00 394    | 481 00 394    | 481 00 394    | 481 00 394    | 481 00 394    | 2    |
| 3D*      | Hex Lock Nut 1-1/8"-7                            | 934 00 506    | 934 00 506    | 934 00 506    | 934 00 506    | 934 00 506    | 4    |
| 4        | Equalizing Beam RH (curbside - bushed beam only) | 481 00 450    | 481 00 450    | 481 00 450    | 481 00 450    | **            | 2    |
| 5        | Hex Lock Nut 3/4"-10                             | 934 00 492    | 934 00 492    | 934 00 492    | 934 00 492    | 934 00 492    | 8    |
| 6        | Hex Bolt 3/4"-10 x 3.50" GR 5                    | 930 06 035    | 930 06 035    | 930 06 035    | 930 06 035    | 930 06 035    | 8    |
| 7        | Shock Absorber                                   | 900 45 298    | 900 45 298    | 900 44 162    | 900 44 162    | 900 45 040    | 4    |
| 8        | Hex Bolt 1/2"-13 x 1-3/4"                        | XB-HHC-001-33 | XB-HHC-001-33 | XB-HHC-001-33 | XB-HHC-001-33 | XB-HHC-001-33 | 4    |
| 9        | Threaded Rod Assembly                            | 905 48 007    | 905 48 007    | 905 48 007    | 905 48 007    | 905 48 007    | 2    |
| 10       | Alignment Plate                                  | 905 31 339    | 905 31 339    | 905 31 339    | 905 31 339    | 905 31 339    | 2    |
| 11       | SwingAlign Yoke                                  | 900 45 491    | 900 45 491    | 900 45 491    | 900 45 491    | 900 45 491    | 2    |
| 12       | Hex Nut 3/4"-16                                  | 934 00 149    | 934 00 149    | 934 00 149    | 934 00 149    | 934 00 149    | 4    |
| 13       | Washer 3/4"                                      | 936 00 077    | 936 00 077    | 936 00 077    | 936 00 077    | 936 00 077    | 4    |
| 14       | Hex Nut 1/2"-13                                  | 934 00 136    | 934 00 136    | 934 00 136    | 934 00 136    | 934 00 136    | 8    |
| 15       | Washer 1/2"                                      | 936 00 072    | 936 00 072    | 936 00 072    | 936 00 072    | 936 00 072    | 8    |
| 16       | Air Spring                                       | 481 00 492    | 481 00 492    | 481 00 493    | 481 00 494    | 481 00 495    | 4    |
| 17       | Spacer   | ***           | ***           | ***           | ***           | ***           | 4    |
| 18       | Flange Hex Nut 1/2"-13 GR B                      | 934 00 623    | 934 00 623    | 934 00 623    | 934 00 623    | 934 00 623    | 4    |

\* Replacement components should be purchased in bushing connection SRK kits listed on pages 5 and 6.

\*\* For CB400 18" ride height only: roadside beam part number is 905 48 096, curbside beam 905 48 097.

\*\*\* Spacers are available in kits only, not individually.

## CB400/4000 AIR CONTROL PARTS

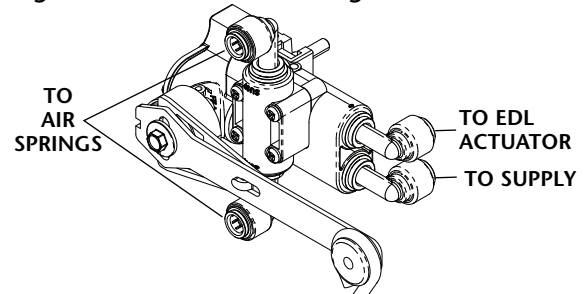
### Height Control Valve Part Number Table

| DESCRIPTION*                       | HOLLAND PART NO. |
|------------------------------------|------------------|
| HCV with integral dump - low flow  | 905 60 122       |
| HCV without integral dump          | 905 60 123       |
| HCV with integral dump - high flow | 905 60 121       |

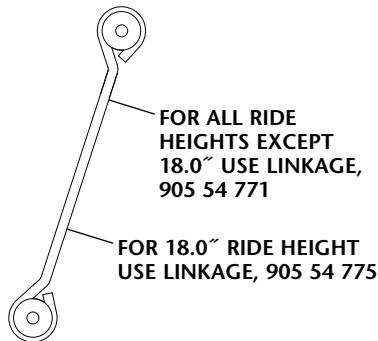
\*All valves are set up for 3/8" fittings.

**NOTE:** Do not use the high flow valve when the trailer is equipped with PosiLok™ System.

### Height Control Valve Port Assignments



### Height Control Valve Link



**NOTE:** Link includes attaching hardware.

**NOTE:** Link is not included in air controls kit and must be ordered separately, if needed.

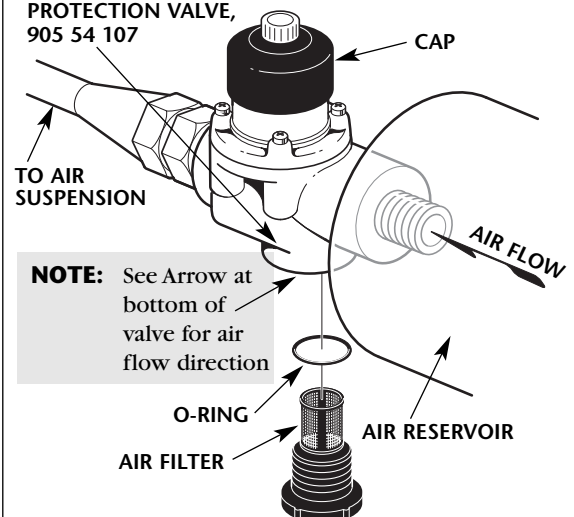
### New Pressure Protection Valve

PRESSURE PROTECTION VALVE, 905 60 109

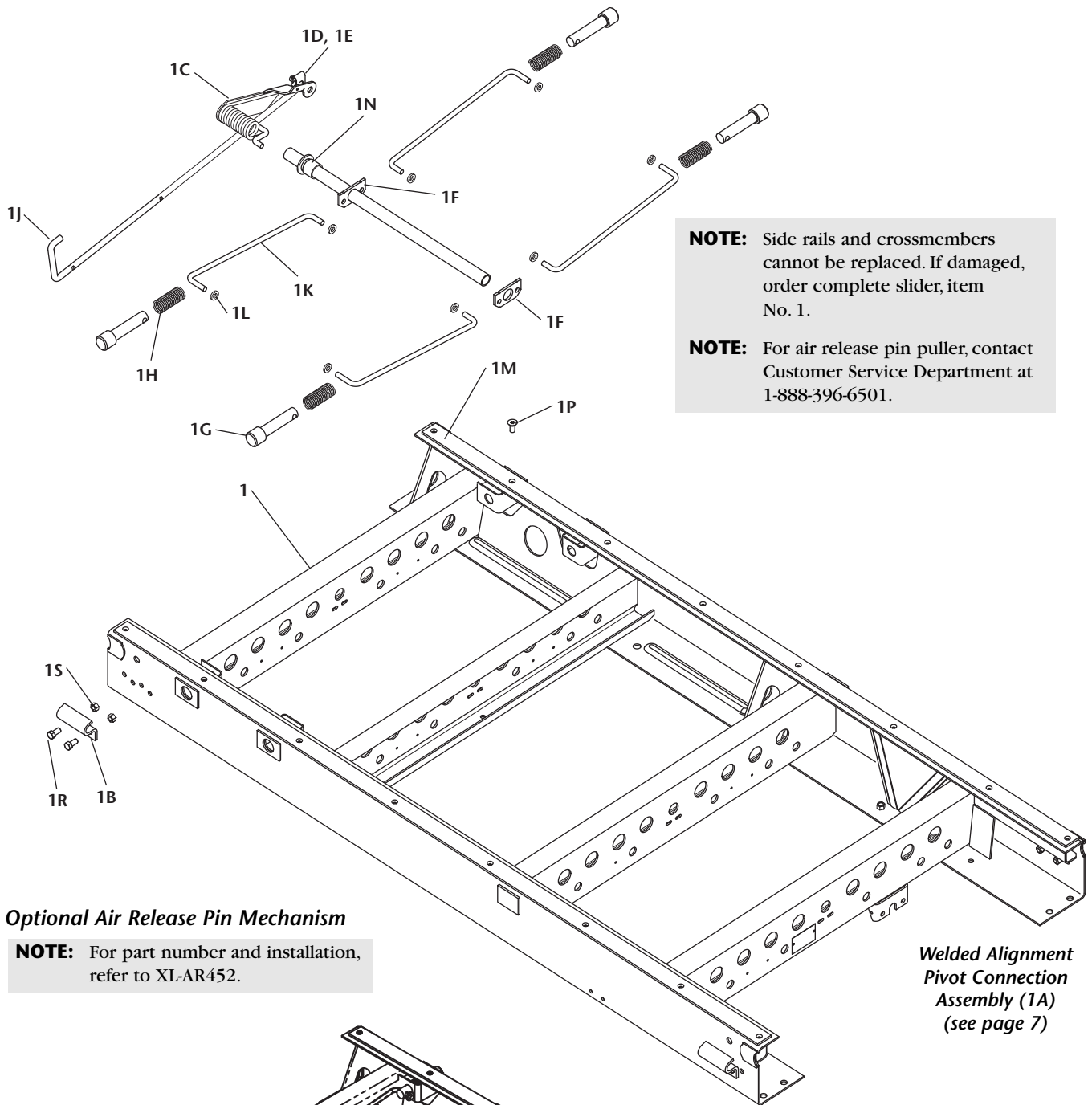


### Optional Pressure Protection Valve

OPTIONAL PRESSURE PROTECTION VALVE, 905 54 107



# CB400/4000 SLIDER BOX EXPLODED VIEW



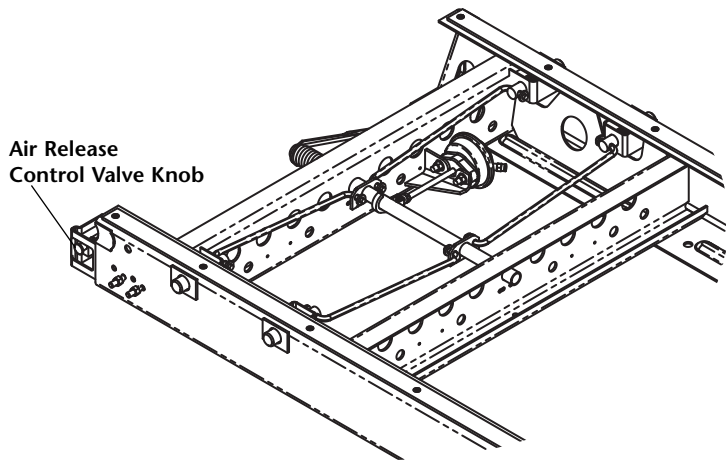
**NOTE:** Side rails and crossmembers cannot be replaced. If damaged, order complete slider, item No. 1.

**NOTE:** For air release pin puller, contact Customer Service Department at 1-888-396-6501.

## Optional Air Release Pin Mechanism

**NOTE:** For part number and installation, refer to XL-AR452.

*Welded Alignment  
Pivot Connection  
Assembly (1A)  
(see page 7)*



*SwingAlign (Non-Welded)  
Pivot Connection  
Assembly (1AA)  
(see page 7)*

# CB400/4000 SLIDER BOX PARTS LIST

## Slider Components

| ITEM NO. | DESCRIPTION  | 96" SLIDER BOX RAIL STYLE | CB400-15.5   | CB400-16.0                                 | CB400-16.5                                 | CB400-17.0                                 | QTY. |
|----------|--|---------------------------|--|--|--|--|------|
| 1        | Slider Assy. w/Qwik Release w/ 2 SwingAlign & 2 Fixed Frame Brkts.*<br>(Items 1 includes items 1A - 1S) and Suspension | CL**                      | 42" - CL211Q11-<br>48" - CL111Q11-                 | 42" - CL221Q11-<br>48" - CL121Q11-         | 42" - CL231Q11-<br>48" - CL131Q11-         | 42" - CL241Q11-<br>48" - CL141Q11-         | 1    |
|          |  | CH**                      | 42" - CH211Q11-<br>48" - CH111Q11-                 | 42" - CH221Q11-<br>48" - CH121Q11-         | 42" - CH231Q11-<br>48" - CH131Q11-         | 42" - CH241Q11-<br>48" - CH141Q11-         |      |
|          |  | CT**                      | 42" - CT211Q11-<br>48" - CT111Q11-                 | 42" - CT221Q11-<br>48" - CT121Q11-         | 42" - CT231Q11-<br>48" - CT131Q11-         | 42" - CT241Q11-<br>48" - CT141Q11-         |      |
|          |  | CU**                      | 42" - CU211Q11-<br>48" - CU111Q11-                 | 42" - CU221Q11-<br>48" - CU121Q11-         | 42" - CU231Q11-<br>48" - CU131Q11-         | 42" - CU241Q11-<br>48" - CU141Q11-         |      |
| 1A       | Frame Bracket (Welded)   | Roadside                  | N/A  | N/A  | N/A  | N/A  | N/A  |
|          |  | Curbside                  | See Frame Bracket Replacement Kits - pages 5 and 6 |  |  |  | N/A  |
| 1AA      | Frame Bracket (SwingAlign)   | Roadside                  | See Frame Bracket Replacement Kits - pages 5 and 6 |  |  |  | N/A  |
| 1B       | Hold Down Bracket  |                           | 42" - SLO893<br>48" - SLO893                       | 42" - SLO893<br>48" - SLO893               | 42" - SLO893<br>48" - SLO893               | 42" - SLO893<br>48" - SLO893               | 4    |
| 1C       | Torsion Cam  |                           | 42" - SLOA1277-01<br>48" - SLOA1277-01             | 42" - SLOA1277-01<br>48" - SLOA1277-01     | 42" - SLOA1277-01<br>48" - SLOA1277-01     | 42" - SLOA1277-01<br>48" - SLOA1277-01     | 1    |
| 1D       | Pull Handle Clip   |                           | 42" - SLOA1273<br>48" - SLOA1273                   | 42" - SLOA1273<br>48" - SLOA1273           | 42" - SLOA1273<br>48" - SLOA1273           | 42" - SLOA1273<br>48" - SLOA1273           | 1    |
| 1E       | Cotter Pin 3/16" x 1 1/2"  |                           | 42" - XB-CTP-014-59<br>48" - XB-CTP-014-59         | 42" - XB-CTP-014-59<br>48" - XB-CTP-014-59 | 42" - XB-CTP-014-59<br>48" - XB-CTP-014-59 | 42" - XB-CTP-014-59<br>48" - XB-CTP-014-59 | 1    |
| 1F       | Cam Plate  |                           | 42" - SLOA1274<br>48" - SLOA1274                   | 42" - SLOA1274<br>48" - SLOA1274           | 42" - SLOA1274<br>48" - SLOA1274           | 42" - SLOA1274<br>48" - SLOA1274           | 2    |
| 1G       | Lock Pin Hutch Style 1 5/8" Dia.   |                           | 42" - SLOA1261<br>48" - SLOA1261                   | 42" - SLOA1261<br>48" - SLOA1261           | 42" - SLOA1261<br>48" - SLOA1261           | 42" - SLOA1261<br>48" - SLOA1261           | 4    |
|          | Lock Pin 1 3/8" Dia. All Others  |                           | 42" - SLOA1238<br>48" - SLOA1238                   | 42" - SLOA1238<br>48" - SLOA1238           | 42" - SLOA1238<br>48" - SLOA1238           | 42" - SLOA1238<br>48" - SLOA1238           | 4    |
| 1H       | Compression Spring   |                           | 42" - XB-SPG-020-35<br>48" - XB-SPG-020-35         | 42" - XB-SPG-020-35<br>48" - XB-SPG-020-35 | 42" - XB-SPG-020-35<br>48" - XB-SPG-020-35 | 42" - XB-SPG-020-35<br>48" - XB-SPG-020-35 | 4    |
| 1J       | Pull Handle  |                           | 42" - SLOA1445-02<br>48" - SLOA1445-01             | 42" - SLOA1445-02<br>48" - SLOA1445-01     | 42" - SLOA1445-02<br>48" - SLOA1445-01     | 42" - SLOA1445-02<br>48" - SLOA1445-01     | 1    |
| 1K       | Pin Pull Rod   |                           | 42" - SLOA1239-01<br>48" - SLOA1239-02             | 42" - SLOA1239-01<br>48" - SLOA1239-02     | 42" - SLOA1239-01<br>48" - SLOA1239-02     | 42" - SLOA1239-01<br>48" - SLOA1239-02     | 4    |
| 1L       | Washer 1/2" (Pin Pull Rod)   |                           | 42" - XB-PW-016-85<br>48" - XB-PW-016-85           | 42" - XB-PW-016-85<br>48" - XB-PW-016-85   | 42" - XB-PW-016-85<br>48" - XB-PW-016-85   | 42" - XB-PW-016-85<br>48" - XB-PW-016-85   | 8    |
| 1M       | Slider Pad 96" (Long)  |                           | 42" - XB-SLOA1054<br>48" - XB-SLOA1054             | 42" - XB-SLOA1054<br>48" - XB-SLOA1054     | 42" - XB-SLOA1054<br>48" - XB-SLOA1054     | 42" - XB-SLOA1054<br>48" - XB-SLOA1054     | 2    |
| 1N       | Spacer (Cam Shaft Stop)  |                           | 42" - SLO523-07<br>48" - SLO523-07                 | 42" - SLO523-07<br>48" - SLO523-07         | 42" - SLO523-07<br>48" - SLO523-07         | 42" - SLO523-07<br>48" - SLO523-07         | 1    |
| 1P       | Self Tap Screw 5/16"-18 x 3/4"   |                           | 42" - XB-ST5-008-16<br>48" - XB-ST5-008-16         | 42" - XB-ST5-008-16<br>48" - XB-ST5-008-16 | 42" - XB-ST5-008-16<br>48" - XB-ST5-008-16 | 42" - XB-ST5-008-16<br>48" - XB-ST5-008-16 | 16   |
| 1R       | Hold Down Bracket Bolt 1/2"-13 x 1 1/4"  |                           | 42" - XB-HHC-001-33<br>48" - XB-HHC-001-33         | 42" - XB-HHC-001-33<br>48" - XB-HHC-001-33 | 42" - XB-HHC-001-33<br>48" - XB-HHC-001-33 | 42" - XB-HHC-001-33<br>48" - XB-HHC-001-33 | 8    |
| 1S       | Hold Down Bracket Lock Nut 1/2"-13   |                           | 42" - XB-SLN-012-42<br>48" - XB-SLN-012-42         | 42" - XB-SLN-012-42<br>48" - XB-SLN-012-42 | 42" - XB-SLN-012-42<br>48" - XB-SLN-012-42 | 42" - XB-SLN-012-42<br>48" - XB-SLN-012-42 | 8    |

\* SwingAlign non-welded style "adjustable" frame bracket on roadside; welded style "fixed" frame bracket on curbside.

\*\* CL = Holland slider box rail style; CH = Hutch slider box rail style;  
CT = TTMA slider box rail style; CU = Utility slider box rail style.

**NOTE:** If your trailer is equipped with the "Air Release Pin Mechanism," refer to XL-AR452 for parts list and service information.



**SAF-HOLLAND USA, Inc.**  
888.396.6501 Fax 800.356.3929

**SAF-HOLLAND Canada Limited**  
519.537.3494 Fax 800.565.7753  
Western Canada  
604.574.7491 Fax 604.574.0244