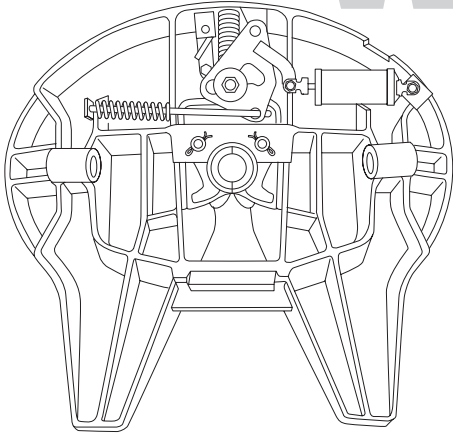




FIFTH WHEELS

MAINTENANCE AND REBUILDING PROCEDURES



**FW1560-C
Fifth Wheel**

Rebuild Kit RK-65005

TROUBLESHOOTING HINTS

FIFTH WHEEL IS HARD TO HOOK UP TO TRAILER

✓ POSSIBLE CAUSE	REMEDY
<input type="checkbox"/> The fifth wheel may be too low; the kingpin is not entering the locks properly.	Raise the fifth wheel until it contacts the bolster plate.
<input type="checkbox"/> Locks are closed.	Push and hold the air control valve (XB-2556) to keep the locks open.
<input type="checkbox"/> Accumulated rust or grime interfering with lock operation.	Clean well, then spray a light lubricant or diesel fuel on all moving parts and operate several times.
<input type="checkbox"/> Bent release handle or kingpin or damaged bolster plate may be interfering with lock movement.	Check and replace as necessary. Check the kingpin with a Holland TF-0110 kingpin gage and bolster plate with a 48" straight edge – repair or replace as required.
<input type="checkbox"/> The locks may be damaged.	Inspect and replace, if required, following the procedures in this manual.
<input type="checkbox"/> The fifth wheel may need rebuilding.	Follow the procedures contained in this manual using the appropriate rebuilding kit.

FIFTH WHEEL IS HARD TO UNHOOK FROM TRAILER

✓ POSSIBLE CAUSE	REMEDY
<input type="checkbox"/> The secondary lock is not released.	Inspect secondary lock for missing or broken parts and repair or replace as required. Inspect air line and air cylinder for restrictions.
<input type="checkbox"/> The tractor may be putting pressure against locks.	Back the tractor into the trailer to relieve pressure. Lock the tractor brakes. Push and hold air control valve (XB-2556), release tractor brakes and move the tractor forward.
<input type="checkbox"/> Rust or grime on locking mechanism.	Clean well, then spray a light lubricant or diesel fuel on all moving parts including release handle and operate several times.
<input type="checkbox"/> Bent kingpin or damaged bolster plate.	Check the kingpin with a Holland TF-0110 kingpin gage and bolster plate with a 48" straight edge – repair or replace as required.

MAINTENANCE OF FW1560-C FIFTH WHEELS

The following procedures must be performed as necessary to maintain proper operation.

1. Lubricate all moving parts with No. 2 diesel oil or suitable lubricant.
2. Lube fittings (38) in shaft (37) and lube fittings (41) in shaft (44) weekly with grease.
3. Check for proper operation of fifth wheel with a TF-TLN-5001 kingpin lock tester. Check locking and unlocking actions.
4. Replace all cracked, missing or damaged parts using only Holland parts.

REBUILDING OF FW1560-C FIFTH WHEELS

Remove the fifth wheel head and proceed as follows:

1. Remove pin (7), spring (8) and secondary lock (6).
2. Remove cam (19) and air cylinder (23).
3. Remove yoke shank (14), spring (13) and yoke (12).
4. Remove lock pins (3), spring (5) and locks (4).

To reassemble the fifth wheel:

1. Lubricate lock pin holes with NeverSeez DO NOT SUBSTITUTE. Install locks (4), making sure they are properly oriented (the "TOP" marked on each lock should face the fifth wheel casting), followed by pins (3), spring (5) and cotter pins (2).
2. Install yoke (12), spring (13) and yoke shank (14) so that the indentation in yoke shank (14) is aligned with hole in yoke (12). When yoke (12) is installed, the yoke tips must be flush with ends of the locks (4) or extend beyond (See FIGURE 1).

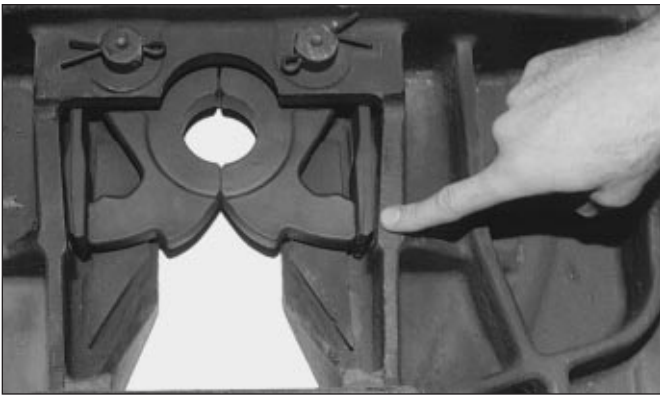


FIGURE 1

3. Install handle (9) with washer (11), with spring (10) on cam (19).
4. Install washer (20) between cam (19) and yoke (12).
5. Install second washer (20) on bolt (22) and install roller (21) on bolt (22). Install bolt (22) through cam opening (19) through a second washer (20), then into yoke (12), making sure that the bolt will go into the recess in yoke shank (14). Tighten on cam (19) until bolt bottoms out, making sure there is a little up and down play on the cam and that washers (20) are free to spin.

6. Install washers (16), one between casting and cam (19) and second washer (16), on bolt (18) and roller (17). Install into casting through cam (19) and tighten with self-locking nut (15). Do not overtighten. Install secondary lock (6), spring (8) and pin (7).
7. Install air cylinder (23) as shown in exploded view with screw (24) and self-locking nut (15), leaving some free movement.
8. Install fifth wheel head (1) on base with shaft (43). Slide on collars (42) to fifth wheel plate (1) and install bolts (44) and nuts (42).

NOTE: Check operation of fifth wheel with a TF-TLN-5001 lock adjustment tool for proper locking and unlocking action.

XA-60-S UNIVERSAL ASSEMBLY

Disassembly of XA-60-S assembly:

1. To remove rocker arm (35), remove set screws (34), remove 2 bolts (40) and remove rocker pin (36).
2. To remove rocker bed (32), remove all bolts (30) and (39) and remove weld where rocker bed (32) is welded to mounting plate (29).

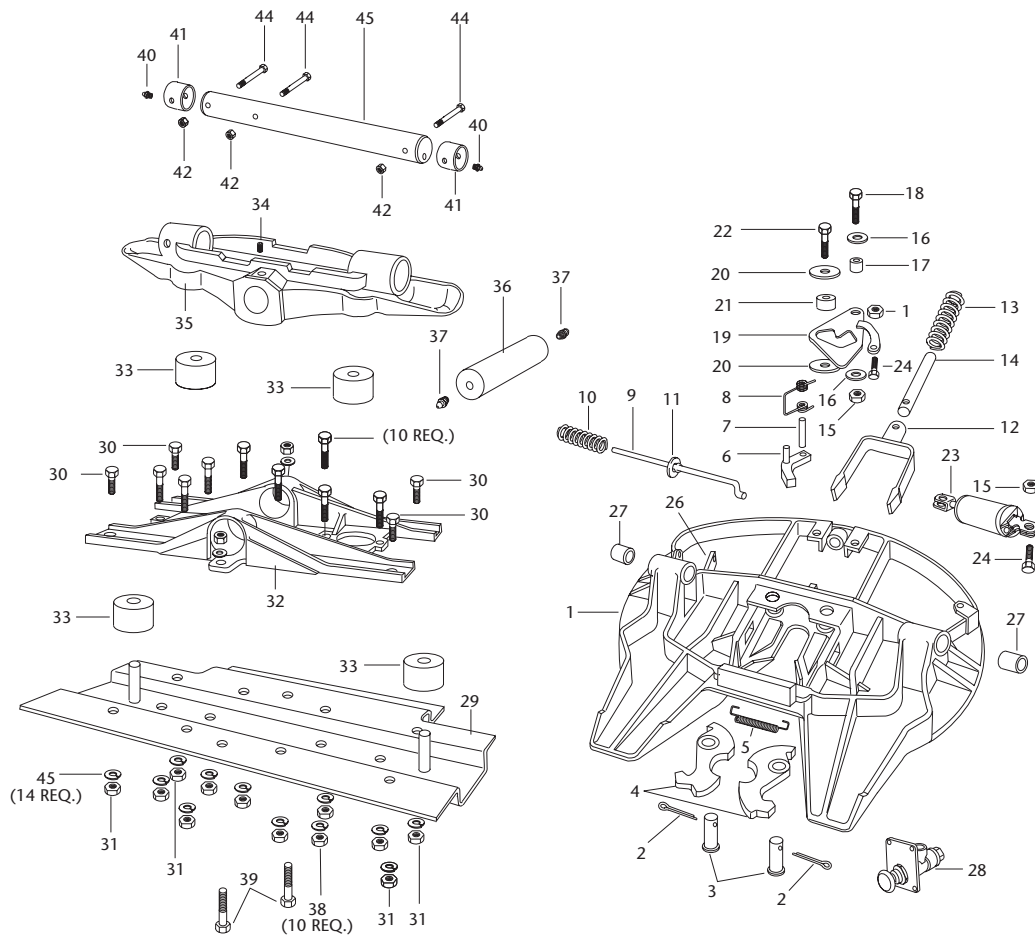
Reassembly of XA-60-S assembly:

1. Place rocker bed (32) on mounting plate (29).
2. Install bolts (30) lock washers (45) and nuts (31) on four corners. Install 8 bolts (39), lock washers (45) and nuts (38). Do not install the two center bolts (39), lock washers (45) and nuts (38) yet. Skip weld rocker bed (32) to the mounting plate (29) using a minimum of 28 linear inches of .25" fillet weld.

IMPORTANT: When welding, use a procedure that assures a sound, good quality weld, which protects the operator and others. Overwelding may cause distortion and damage, while underwelding may not develop sufficient strength.

A low hydrogen process and AWS E70XX filler metal are recommended. Take precautions to insure that the tractor electrical system is not damaged by the welding.

3. Install four rubber cushions (33).
4. Place rocker arm (35) in rocker bed (32) and insert rocker pin (36). Install two bolts (39) with threads up in front and rear rocker pin. Install lock washers (45) and nuts (38) on bolts (39).
5. Align recess in rocker pin (36) and install set screw (34). Tighten set screw (34) securely.
6. Install lube fittings (37) in rocker pin (36).



ITEM	PART NO.	NO. REQ'D	DESCRIPTION	ITEM	PART NO.	NO. REQ'D.	DESCRIPTION
*1	XA-1501-CA1	1	5th wheel sub assy. complete less base & shaft	24	XB-T-89-5	2	HHCS, 1/2"-20 x 1 3/4" LG
2	XB-5	2	Cotter pin	25	XA-1512	1	Cylinder support
3	XA-1313	2	Lock pins	26	XA-1532	1	Lever bracket
4	XA-1704-X	1	Lock set	*27	XB-03429	2	Bearing
5	XB-GT-13-1	1	Extension spring	*28	XB-2556	1	Air control valve
6	XA-3542-R	1	Secondary lock sub assy.	*29	XA-H-15-C-60	1	Mounting plate sub assy.
7	XB-21-S-500-2750	1	Rolled pin	*30	XB-9	4	Hex bolt 5/8" -18 x 1 1/2"
8	XB-2149	1	Torsion spring	*31	XB-E-540	4	Hex nut 5/8" -18
9	XA-1707-5	1	Handle	*32	XA-61-A	1	Rocker bed
10	XB-1028-1	1	Spring	*33	XB-70	4	Rubber cushion
11	XB-PW-1732-1-116	1	Washer	*34	XB-2896	1	Set screw
12	XA-1703-F	1	Yoke	*35	XA-62	1	Rocker arm
13	XB-1505	1	Spring	*36	XA-63-1	1	Rocker pin
14	XA-1706-1	1	Yoke shank	*37	XB-H-38	2	Lube fitting
15	XB-T-69-A	3	Lock nut 1/2" -20	*38	XB-1316	10	Hex nut 5/8" -11
16	XB-T-49	2	Plain washer	*39	XB-T-97	10	Hex bolt 5/8" -11 x 2 1/2"
17	XA-1029	1	Roller	*40	XB-767	2	Lube fitting
18	XB-2083	1	Hex bolt 1/2" -20 x 1 3/4"	*41	XA-H-72-A	2	Collar
19	XA-1705-7A	1	Cam plate	*42	XB-338	3	Nut 3/8" -16
20	XB-1030-1	2	Washer	*43	XA-64	1	Shaft
21	XA-1507-1	1	Roller	*44	XB-03437	3	Hex bolt 3/8" -16 x 3 1/2"
22	XB-CX-58-F-134	1	Hex bolt 5/8" -18 x 1 3/4"	*45	XB-T-99	14	Lock washer
23	XA-2524-R-4-1	1	Air cylinder	46	XB-02967	1	NeverSeez (not shown)

* Items are not included in rebuild kit RK-65005.

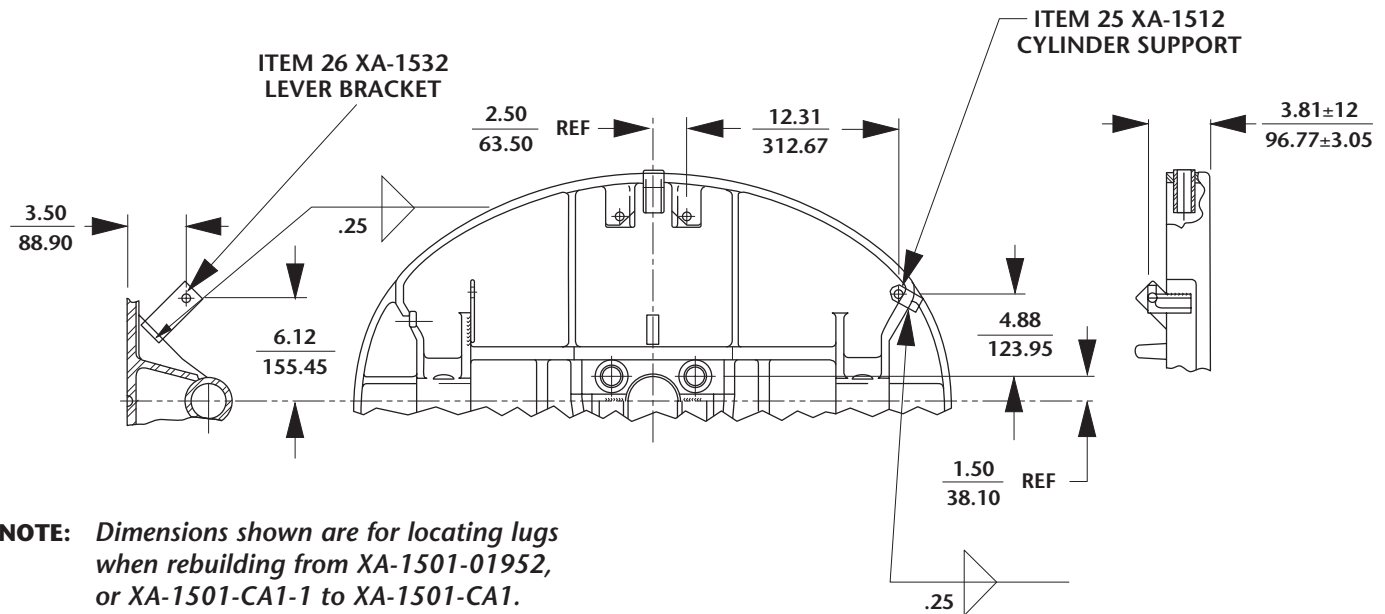
GENERAL INFORMATION

1. All fifth wheel maintenance, adjustment and rebuilding must be performed by a qualified person using proper tools and safe procedures. For more information, refer to Holland Publication XL-FW303 "Fifth Wheel Maintenance Procedures."
2. Do not modify or add to the product.
3. Use only genuine Holland parts.
4. Wear safety goggles during installation, removal and rebuilding.
5. Never strike any part of the item with a steel hammer.
6. Do not weld on this product without written permission from the factory.
7. Observe standard precautions when lifting.
8. Refer to Holland Publication FW 340 for description and instructions for Holland TF-TLN-5001 Lock Adjustment Tool.

9. Do not deviate from these instructions. Any changes or deviations will void all warranties, expressed or implied, unless written consent is first obtained from the factory.
10. Check to see that all parts included in the kit are enclosed in the box.

IMPORTANT: When welding, use a procedure that assures a sound, good quality weld, which protects the operator and others. Overwelding may cause distortion and damage, while underwelding may not develop sufficient strength. A low hydrogen process and AWS E70XX filler metal are recommended.

NOTE: If cylinder support (25) or lever bracket (26) is damaged, replace as shown below.



NOTE: Dimensions shown are for locating lugs when rebuilding from XA-1501-01952, or XA-1501-CA1-1 to XA-1501-CA1.

These products are covered by Holland's Commercial Products Warranty. Holland reserves the right, without giving prior notice, to change specifications and dimensions as designs are altered or improved.

Copyright © October 2002 • The Holland Group, Inc.

Holland USA, Inc. Facilities:

Denmark, SC Muskegon, MI
 Dumas, AR Warrenton, MO
 Holland, MI Whitehouse Station, NJ
 Milpitas, CA Wylie, TX

Ph: 888-396-6501 Fax: 800-356-3929

Holland International, Inc.

Holland, MI
 Phone: 616-396-6501
 Fax: 616-396-1511

Holland Hitch of Canada, Ltd.

Woodstock, Ontario • Canada
 Phone: 519-537-3494
 Fax: 800-565-7753

Holland Equipment, Ltd.

Norwich, Ontario • Canada
 Phone: 519-863-3414
 Fax: 519-863-2398

Holland Hitch Western, Ltd.

Surrey, British Columbia • Canada
 Phone: 604-574-7491
 Fax: 604-574-0244