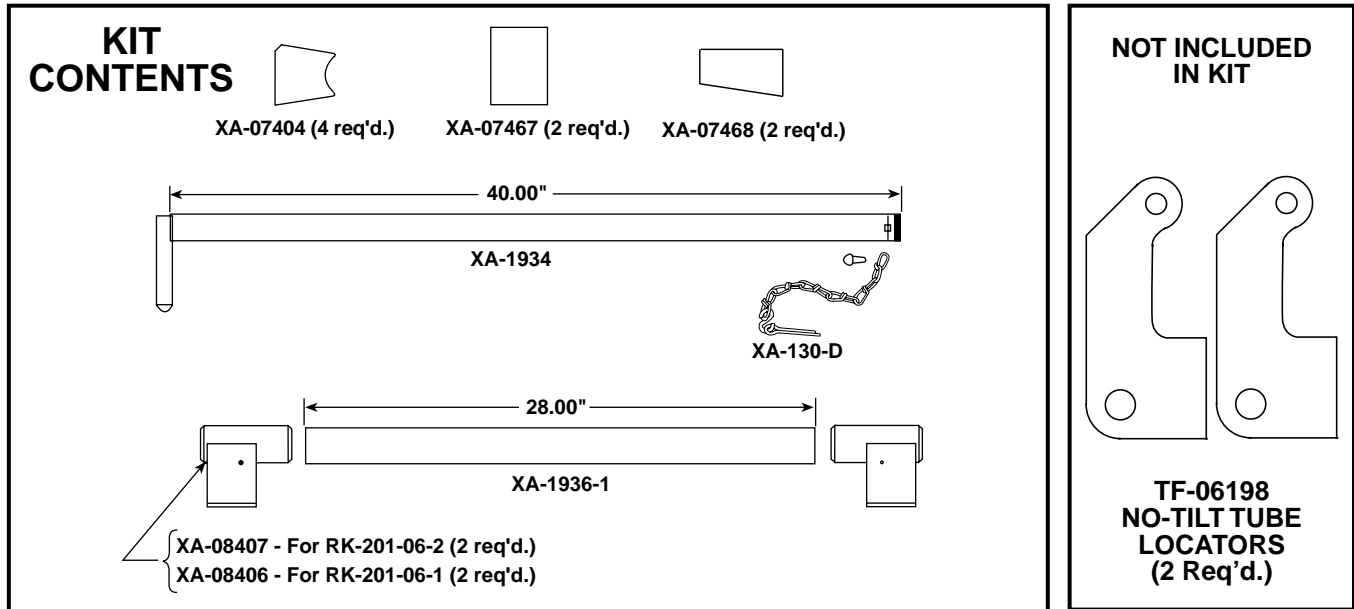




GO THE DISTANCE.

XA-201 STATIONARY FIFTH WHEEL NO-TILT INSTALLATION INSTRUCTIONS

For Use with kits RK-201-06-2 (7.69") and RK-201-06-1 (8.69")



INSTALLATION:

NOTE: This kit requires the use of the TF-06198 No-Tilt Tube Locator to help in locating the no-tilt tube on the fifth wheel casting. TF-06198 must be ordered separately.

GENERAL RECOMMENDATIONS:

1. Every user and installer using Holland products either recommended or not recommended by Holland must thoroughly satisfy himself that the installation procedure used is appropriate for the vehicle.
2. Consult the Holland literature for fifth wheel capacities and applications.
3. The following procedure is applicable only for 7.69" and 8.69" height standard capacity stationary fifth wheels.
4. The installation of this kit requires the use of full length mounting angles, ASTM A36, 4" x 4" x .31" minimum section, extending a minimum of 18" on either side of the fifth wheel pivot pin.

WARNING: DO NOT ATTEMPT TO INSTALL A NO-TILT KIT IF THE TOP PLATE IS CRACKED OR DISTORTED.

CONVERSION PROCEDURE:

TOP PLATE:

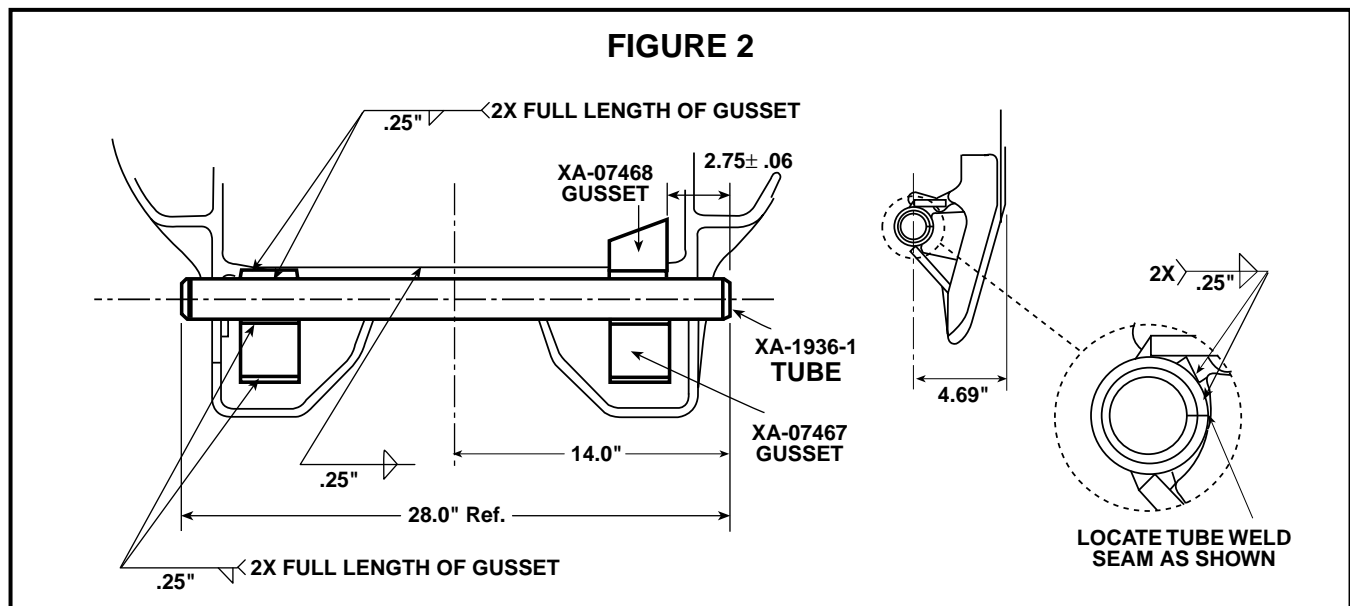
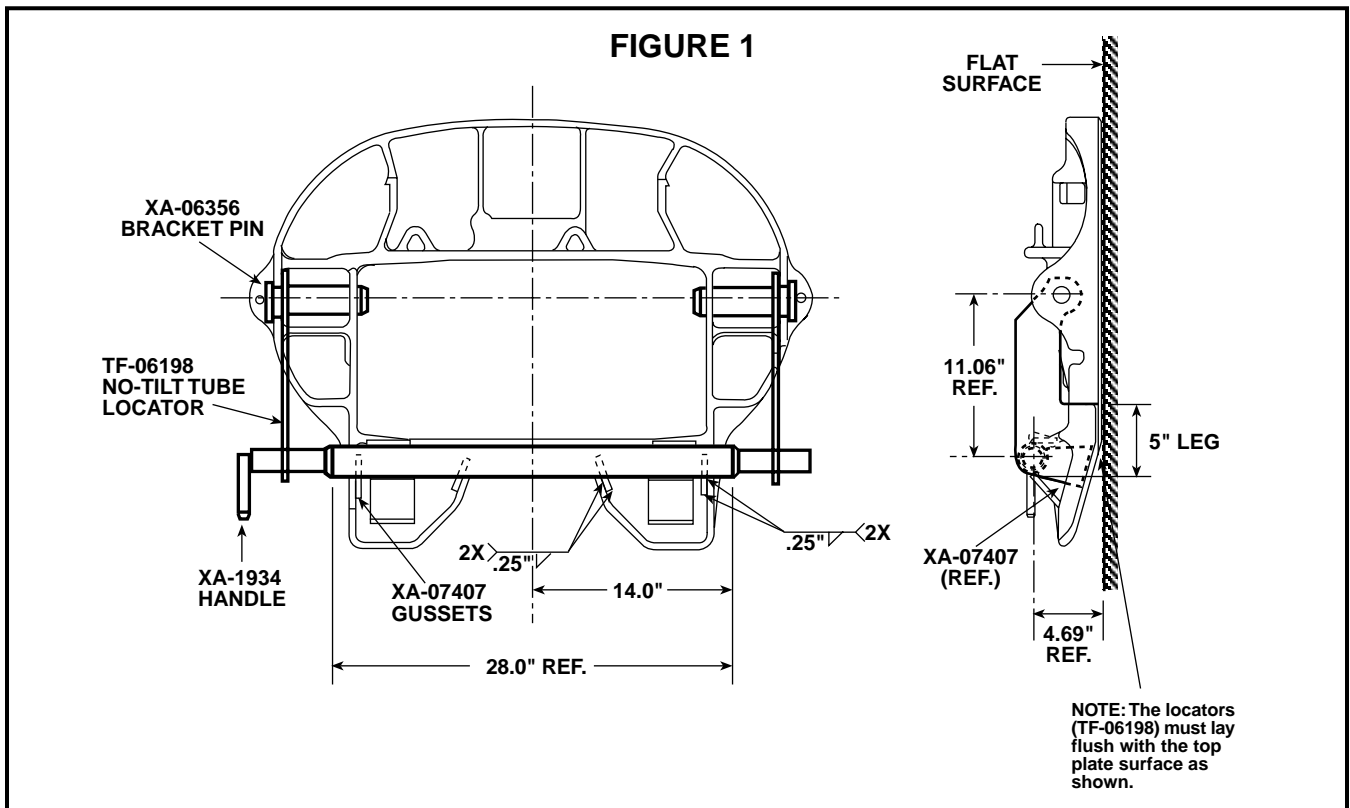
1. Remove the fifth wheel top plate.
2. Remove all dirt and excess debris away from the welding areas of the fifth wheel.
3. Using the existing bracket pins, insert the pin through both ears and the 1.12" diameter hole of the TF-06198 No-Tilt Tube Locator as shown in figure 1 on page 2.
4. Assemble the shaft handle (XA-1934), tube (XA-1936-1), and two locators (TF-06198) as shown in figure 1.
5. Check to see if the 5" bottom leg of the locators come in contact with the flat surface which the top plate is laying on. If they do not, remove excess bridge material of the fifth wheel casting. Cut and grind the casting until sufficient space is cleared to allow the leg of the locators to contact the flat surface.

DO NOT REMOVE MORE MATERIAL THAN IS NECESSARY.

6. Locate four (4) XA-07407 gussets as to allow proper placement of the XA-1936-1 tube. Use .25" fillet welds to attach gussets to the top plate as shown in figure 1 below.

WARNING: WHEN WELDING, USE A PROCEDURE WHICH ASSURES A SOUND, GOOD QUALITY WELD AND WHICH PROTECTS THE OPERATOR AND OTHERS. OVERWELDING MAY CAUSE DISTORTION AND DAMAGE AND UNDERWELDING MAY NOT DEVELOP SUFFICIENT STRENGTH. A LOW HYDROGEN PROCESS AND AWS E70XX FILLER METAL ARE RECOMMENDED. TAKE PRECAUTIONS TO INSURE THAT THE TRACTOR ELECTRICAL SYSTEM IS NOT DAMAGED BY THE WELDING.

7. Locate the tube seam into the pocket of the gussets as shown in figure 2. Weld the XA-1936-1 tube to the top plate and the four gussets. Use .25" fillet welds as shown in figure 2.
8. Locate and weld the two XA-07467 gussets and the two XA-07468 gussets as shown in figure 2, using .25" fillet welds.

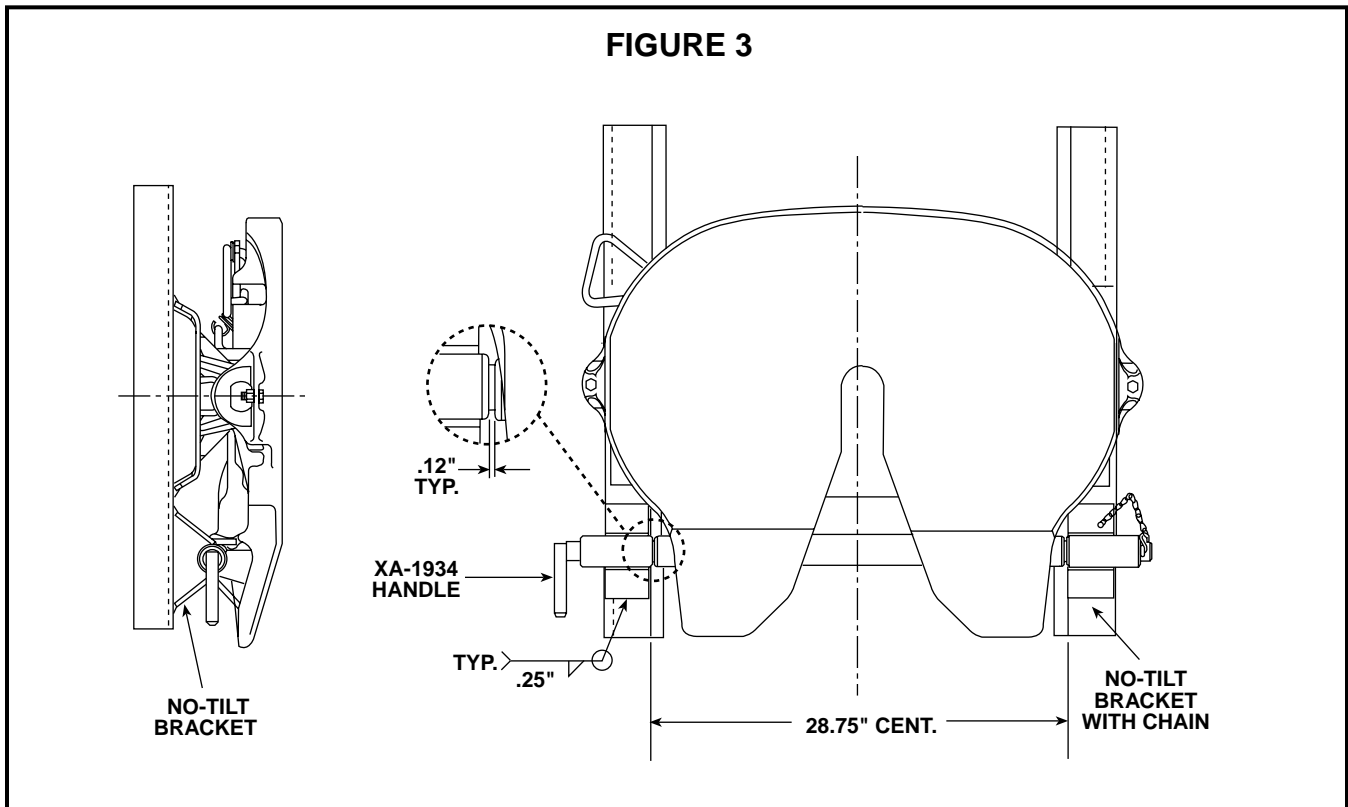


NO-TILT ASSEMBLY MOUNTING ON BRACKETS:

1. Reattach the modified top plate to the fifth wheel bracket assembly.
2. Locate and orient the brackets on the mounting angles as shown in figure 3 below. Make sure that the right bracket has the chain assembly positioned on the outside of the assembly as shown. Slide the shaft assembly (XA-1934) through the left bracket, through the top plate tube, and the right bracket.

CAUTION: DO NOT WELD ON THE TRACTOR FRAME. BRACKETS SHOULD BE ATTACHED TO THE FIFTH WHEEL MOUNTING ANGLE.

3. Verify that there is sufficient area on the mounting angles in which to weld on the brackets. Be sure that all surfaces involved are cleaned in preparation for welding.
4. Position the brackets with a 1/8" gap between the bracket tube and top plate tube as shown in figure 3. Tack weld the brackets to the mounting angles.
5. Remove the shaft assembly (XA-1934) and check for free articulation.
6. Weld the brackets as shown in figure 3.
7. Attach chain assembly (XA-130-D) to bracket (XA-08406 or XA-08407) as shown in figure 3.



Copyright © February 2000 The Holland Group, Inc.

★ Holland Hitch Co.
Holland, MI 49423
Whitehouse Station, NJ 08889
Denmark, SC 29042
Wylie, TX 75098
Milpitas, CA 95035
888-396-6501
FAX 800-769-3299

▲ Holland Binkley Co.
Warrenton, MO 63383
636-456-3455
FAX 636-456-6792

▲ Holland Equipment, Ltd.
Norwich, Ontario
Canada N0J 1P0
519-863-3414
FAX 519-863-2398

▲ Holland Binkley Co.
Axle Products Division
Delphos, OH 45833
419-692-6015
FAX 419-692-0503

✦ Euro-Hitch, GmbH
Schloss Holte
Germany
49-(0)5207-89560
FAX 49-(0)5207-895656

✦ Holland Neway
International, Inc.
Muskegon, MI 49442
231-773-3271
FAX 231-766-3893

✦ Eurohitch (U.K.), Ltd.
Tipton, West Midlands
United Kingdom
44-(0)121-520-6116
FAX 44-(0)121-520-6070

✦ Holland Europe, Ltd.
Hartlebury, United Kingdom
44-(0)1299-254400
FAX 44-(0)1299-251664

Holland Transtrade
Far East SDN BHD
Shah Alam, Malaysia
60-(0)3-734-2888
FAX 60-(0)3-736-5588

Holland Transtrade
(Thailand) Company, Ltd.
Bangkok, Thailand
66-(0)2-513-8758
FAX 66-(0)2-513-8757

★ Holland Hitch of Canada, Ltd.
Woodstock, Ontario
Canada N4S 7Z5
519-537-3494
FAX 800-565-7753

Nippon Holland, Ltd.
Tokyo, Japan
81-(0)3-3461-9130
FAX 81-(0)3-3463-1407

★ Holland Hitch Western, Ltd.
Surrey, British Columbia
Canada V3S 5K1
604-574-7491
FAX 604-574-0244

✦ Holland Hitch (Australia), Ltd.
Melton, Victoria, Australia
61-(0)3-9743-6799
FAX 61-(0)3-9747-9617