



# FIFTH WHEELS

## DATA DOWNLOAD KIT OPERATING INSTRUCTIONS



### Electronic Lock Indicator



RK-10076

12- and 24-volt system



## DOWNLOAD SOFTWARE

In order to use the ELI data download software, you must first download the application program. To obtain the data download software program, contact Holland Hitch Company at 1-888-396-6501 and request a 3 1/2" floppy disk.

### Kit Contents for RK-10076 Download Kit

- (1) Data Download Cable

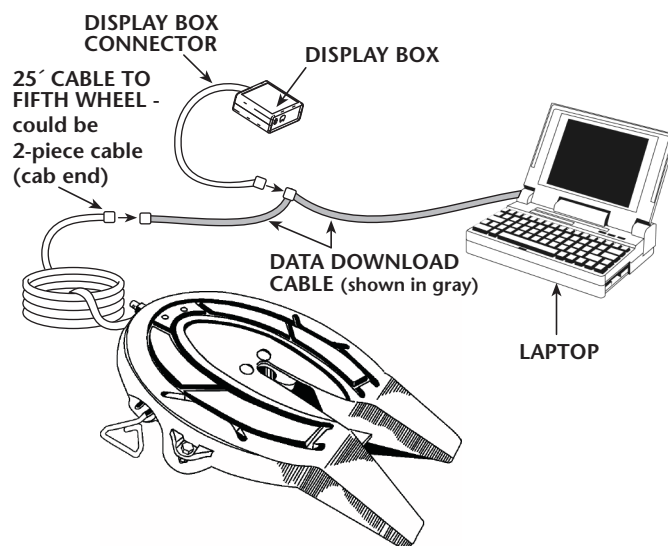
### Tools and Supplies Required to Complete a Successful Download

- (1) Laptop Computer  
With Windows 95 or later, and a minimum of 2MB RAM.

## SET UP

1. Disconnect the ELI display box connector from cab end of the 25' cable (could be a 2-piece cable).
2. Connect the data download cable to the display box connector, the 25' cable, and the laptop computer as shown in **FIGURE 1**.
3. Turn the power on for both the ELI unit and the laptop computer.

FIGURE 1

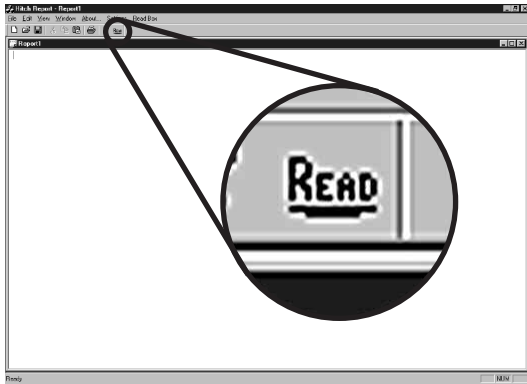


U.S. Patent #5861802, D442971, 6285278, and other patents pending.

## RUN DATA DOWNLOAD SOFTWARE

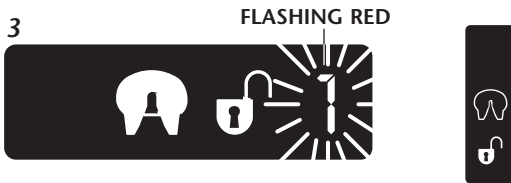
1. Double click the executable file (Hitch Report 4.2.exe) that was downloaded from the floppy disk.
2. Select the "Read" button. See **FIGURE 2**.

**FIGURE 2**



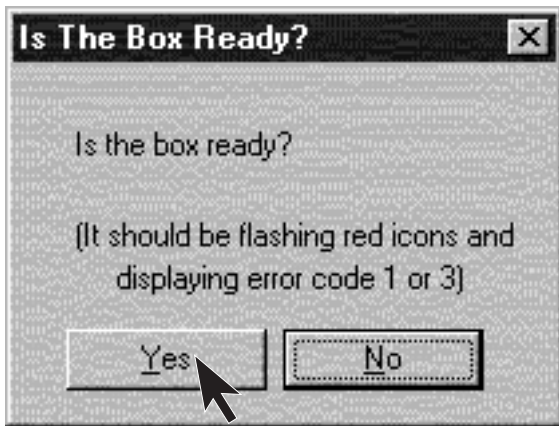
3. Check the ELI display box to make sure an error code "1" or "3" is showing. If neither appears, turn the power to the ELI unit off, then on until code "1" or "3" is displayed. See **FIGURE 3**.

**FIGURE 3**



4. Once the box is ready, click "Yes." See **FIGURE 4**.

**FIGURE 4**



5. As the software is downloading the data, the ELI display will simultaneously show a GREEN, locked padlock icon and a RED, unlocked padlock icon. See **FIGURE 5**.

**FIGURE 5**



## DISPLAY AND COUPLING HISTORY

When the download is complete, a display similar to the one shown in **FIGURE 6** will appear on your computer screen. The numbers below correspond to the numbers shown in **FIGURE 6**.

### 1 Memory Check.

The memory is automatically checked for corruption, and the results will appear as "OK" or "FAILS".

If "OK" is displayed, the coupling history appears.

If "FAILS" is displayed, the coupling history may be inaccurate. Turn the power to the ELI off and then on. Repeat Steps 2 through 5 in the "Run Data Download Software" section.

If the memory check continues to fail, the ELI display box should be replaced.

### 2 Serial Number.

The serial number displayed in the coupling history will match the serial tag affixed to the outside surface of the ELI display box.

### 3 Total number (up to 16 million) of coupling attempts detected by the ELI.

A coupling attempt is counted when the ELI detects a change from "Ready to Couple" status to "Proper Couple" status, or when an error code number occurs.

### 4 The remainder of the Coupling History report displays a detailed summary for the indicated number of the most recent coupling events. The ELI memory capacity limits the storage to approximately 250 of the most recent coupling events.

### 5 Number of proper couples.

A proper couple is attained when the ELI detects, first, the kingpin in the lock at the proper height; and second, the lock mechanism fully closed in the locked position.

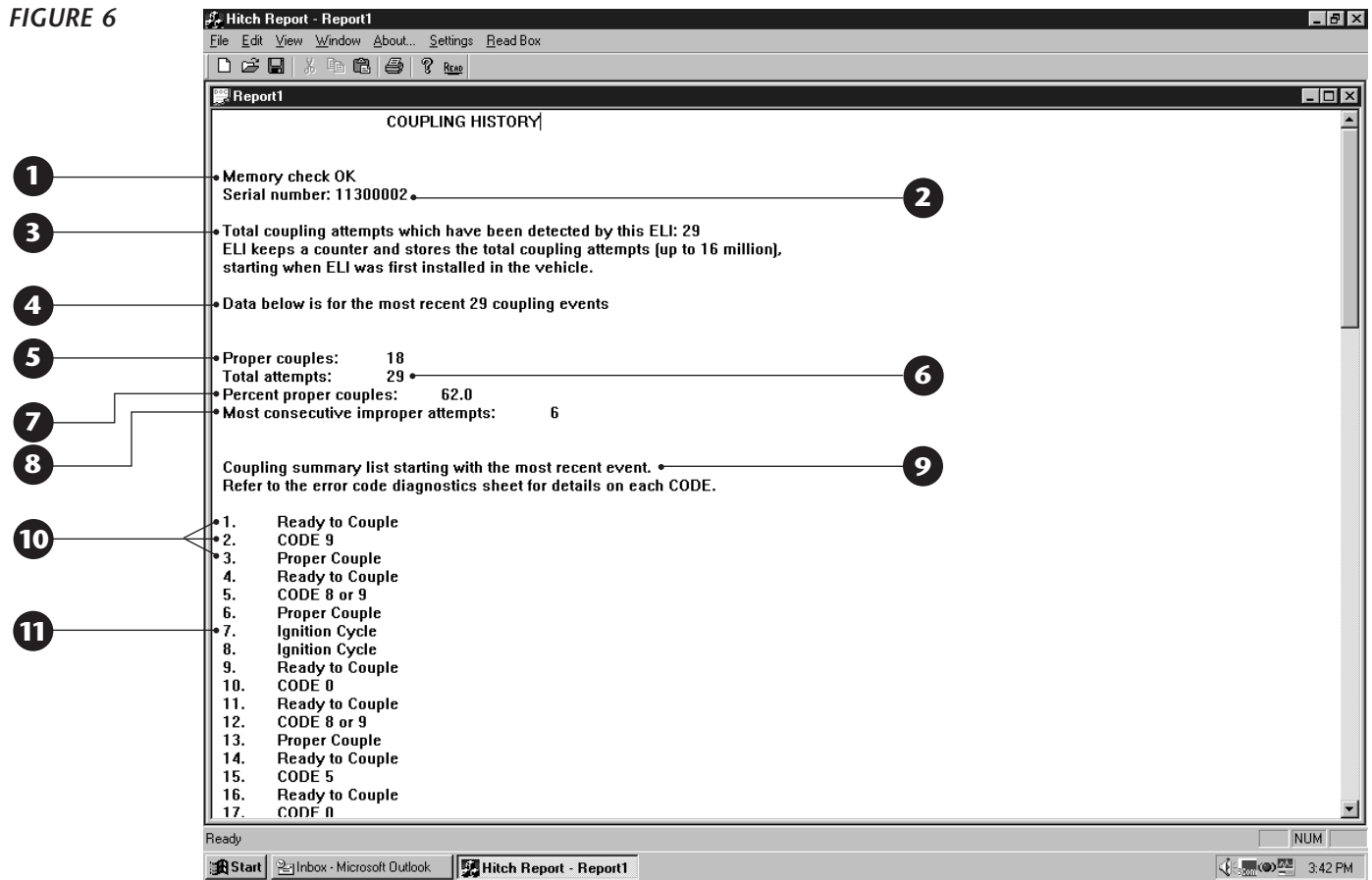
### 6 Number of total attempts.

### 7 Percent proper couples.

The percentage of total couples that were proper is calculated using the following formula: Proper couples **5** ÷ total attempts **6** x 100.

**COUPLING HISTORY REPORT**

**FIGURE 6**



**8** *Number of most consecutive improper attempts.*

An improper attempt is a change in ELI status from “Ready to Couple” to an Error Code number.

**9** *Coupling Summary.*

The coupling summary lists the coupling status, in order, starting with the most recent.

**10** *Ready to Couple, CODE 9, Proper Couple*

See Holland publication “ELI Operating Instructions,” XL-FW-389-XX, for explanations of “Ready to Couple,” Error Code numbers, and “Proper Couple.”

**11** *Ignition Cycle.*

Indicates that the power to the ELI unit was turned off and then back on.

**SAVING RESULTS**

1. The coupling history can be saved as an .rpt file. This file can be viewed when the Holland Hitch report executable file (Hitch Report 4.2.exe) is open.

Or:

2. With your cursor, select all text, copy, and paste into a new Microsoft Word document.

**Holland USA, Inc. Facilities:**

Dumas, AR      Muskegon, MI  
Holland, MI      Warrenton, MO  
Monroe, NC      Wylie, TX

Ph: 888-396-6501      Fax: 800-356-3929

**Holland International, Inc.**

Holland, MI  
Phone: 616-396-6501  
Fax: 616-396-1511

**Holland Hitch of Canada, Ltd.**

Woodstock, Ontario • Canada  
Phone: 519-537-3494  
Fax: 800-565-7753

**Holland Equipment, Ltd.**

Norwich, Ontario • Canada  
Phone: 519-863-3414  
Fax: 519-863-2398

**Holland Hitch Western, Ltd.**

Surrey, British Columbia • Canada  
Phone: 604-574-7491  
Fax: 604-574-0244