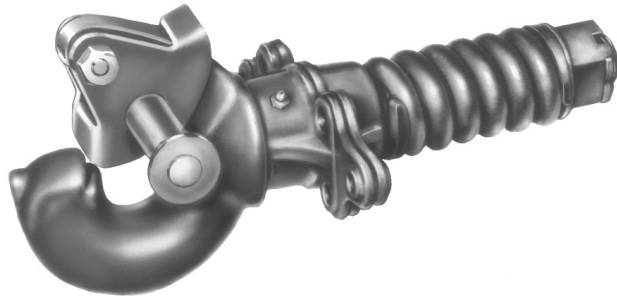




GO THE DISTANCE.

# PH-T-100-A

## FLANGE REPLACEMENT PROCEDURES

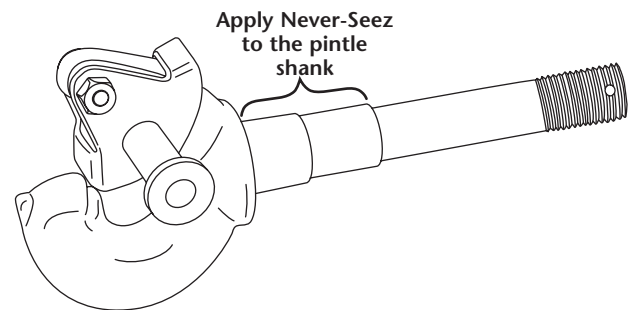


RK-T-92-A2 for PH-T-100-A

### REPLACEMENT INSTRUCTIONS

1. Disassemble the pintle hook from the truck frame. Inspect the pintle hook for wear following the guidelines found in Holland publication XL-PH210-XX.
2. Remove old flanges and mounting hardware from the truck frame. Discard.
3. Clean, and then apply Never-Seez to the shank of the pintle hook where the flanges make contact with the shank. (See **FIGURE 1**.)
4. Install new front and rear flanges with six (6) new 0.5" (1/2") grade 8 fasteners. Do not reuse the old hardware. The flanges are in the proper position when the pintle shank rotates freely. Make sure the bolts are properly tightened (recommended minimum torque of 60 ft-lbs. per SAE J429).
5. Insert the pintle shank into the flanges, then re-install the spring, washer, and slotted nut.
6. Tighten the nut until it is snug against the spring. Turn the nut an additional half turn. Install the new cotter pin into one of the slots in the nut. Spread the cotter pin.
7. Grease the flanges prior to operation.
8. Follow operating and maintenance instructions found in Holland publication XL-PH210-XX.

FIGURE 1



Copyright © April 2002 • The Holland Group, Inc.

#### Holland USA, Inc. Facilities:

Denmark, SC	Muskegon, MI
Dumas, AR	Warrenton, MO
Holland, MI	Whitehouse Station, NJ
Milpitas, CA	Wylie, TX

Ph: 888-396-6501 Fax: 800-356-3929

#### Holland International, Inc.

Holland, MI	616-396-6501
	Fax: 616-396-1511

#### Holland Hitch of Canada, Ltd.

Woodstock, Ontario • Canada	519-537-3494
	Fax: 800-565-7753

#### Holland Equipment, Ltd.

Norwich, Ontario • Canada	519-863-3414
	Fax: 519-863-2398

#### Holland Hitch Western, Ltd.

Surrey, British Columbia • Canada	604-574-7491
	Fax: 604-574-0244