



GO THE DISTANCE.



COUPLER JAW REPLACEMENT PROCEDURE

RK-T-150-S02986

For CP-T-150-S02986

IMPORTANT SAFETY INFORMATION

1. Do not modify or add to the product.
2. Wear safety goggles during installation and removal.
3. Never strike any part of the item with a steel hammer.
4. Do not weld on this product.

⚠ WARNING This equipment must not be used or maintained in a careless manner. The result may be the unintentional uncoupling during towing, resulting in separation of the towed vehicle and subsequent property damage, personal injury or death.

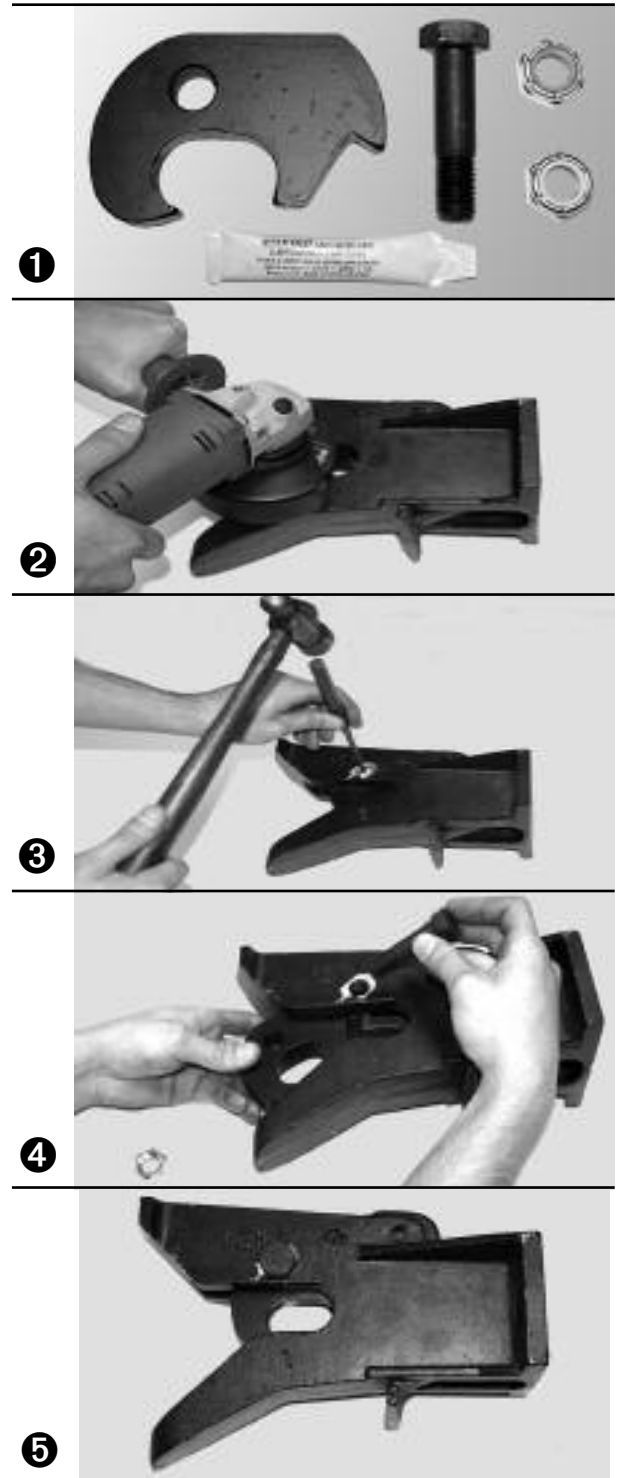
GENERAL INFORMATION

These products are covered by Holland's Commercial Products Warranty. Holland reserves the right, without giving prior notice, to change specifications and dimensions as designs are altered or improved.

INSTALLATION INSTRUCTIONS

- 1 Check kit for contents. Kit should have one (1) bolt, two (2) securing nuts, one (1) coupler jaw, and one (1) tube of Never-Seez™.
- 2 Remove the head of the primary rivet with a grinder.

⚠ WARNING Use extreme care in grinding off the rivet head to prevent damage to the coupler body. Grinding deep into the steel body may cause structural failure, resulting in separation of the towed vehicle and subsequent property damage, personal injury or death.
- 3 Drive the primary rivet out of the coupler and remove the old coupler jaw. Discard old rivet and coupler jaw.
- 4 Apply Never-Seez® to the entire shaft of the new pivot bolt (**not on threads**). Install new coupler jaw and secure with supplied nut and pivot bolt. Torque securing nut to 50-60 ft.-lbs. If during assembly it becomes necessary to remove the pivot nut, discard and use the second nut provided in the kit.
- 5 Confirm that coupler jaw opens when release handle is activated. In addition, confirm that the jaw automatically locks when closed from the fully opened position.

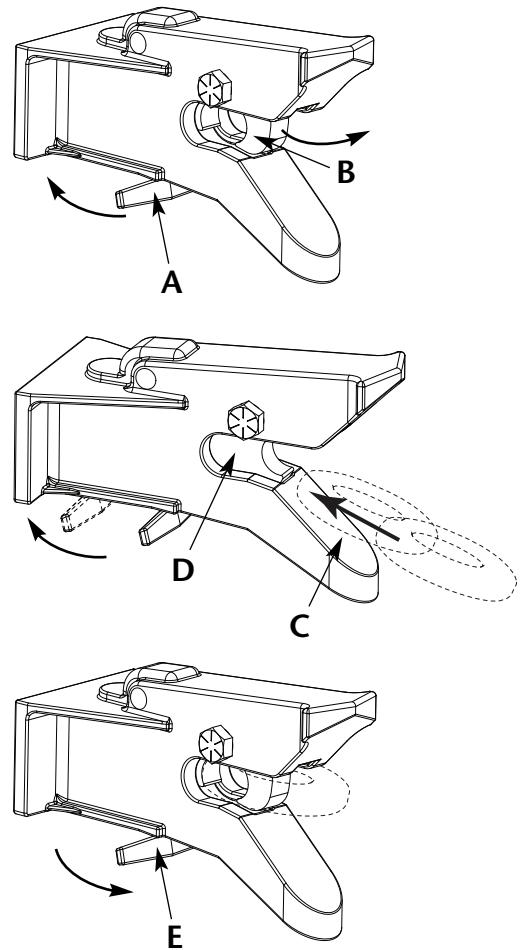


OPERATING INSTRUCTIONS

- A. Before operating, inspect for proper operation, worn, damaged, or missing parts, and a secure mounting. Correct as required before use.
- B. To open the coupler, translate the release handle (A) toward the front of the vehicle. The coupler jaw (B) will be free to open.
- C. To couple, place the drawbar eye on the lead-in ramp (C) and drive the drawbar deep into the throat (D). This action automatically rotates the jaw and captures the drawbar.

Note: During the coupling operation the release handle will move toward the mounting face, then return to its original position.

- D. Visually confirm that the release handle (E) has translated away from the mounting face as shown. This indicates that the coupler jaw has been successfully locked.



MAINTENANCE:

For proper performance, every 3 months, perform the following:

- A. Clean and check for proper operation. Inspect for worn, damaged, or missing parts. Replace as required using only Holland parts.
- B. Inspect, in particular, the coupling contact area. Replace when wear exceeds 1/8" (.125") from the original surface profile.
- C. Regularly lubricate all pivot points with a light oil lubricant.



GO THE DISTANCE.

HOLLAND USA, INC.
1950 Industrial Blvd. • P.O. Box 425 • Muskegon, MI 49443-0425
Phone 888-396-6501 • Fax 800-356-3929
www.thehollandgroupinc.com

Copyright © July 2006 • The Holland Group, Inc.

Holland USA, Inc. Facilities:

Dumas, AR Muskegon, MI
Holland, MI Warrenton, MO
Monroe, NC Wylie, TX

Ph: 888-396-6501 Fax: 800-356-3929

Holland International, Inc.

Holland, MI
Phone: 616-396-6501
Fax: 616-396-1511

Holland Hitch of Canada, Ltd.

Woodstock, Ontario • Canada
Phone: 519-537-3494
Fax: 800-565-7753

Holland Equipment, Ltd.

Norwich, Ontario • Canada
Phone: 519-863-3414
Fax: 519-863-2398

Holland Hitch of Canada, Ltd.

Surrey, British Columbia • Canada
Phone: 604-574-7491
Fax: 604-574-0244