

# Two-Side Axle Lift for Retrofitting in the SAF INTRA *plus*-Series

## Following models are available:

Kit-No.:	Application
3 027 1242 01	for steel hanger brackets
3 027 1243 01	for cross member
3 027 1244 01	for aluminium hanger brackets

Kit Contents:	SAF Part No.	
1x lift arm	2 239 0036 00 (for steel hanger brackets)	item 6
	2 239 0038 00 (for aluminium hanger brackets)	
	2 239 0040 00 (for cross member)	
1x lift bag	4 229 1005 01	item 7
1x protection plate	1 336 0003 00	item 11
1x hex bolt	4 343 1053 88 (for steel hanger brackets)	item 1
	4 343 1049 88 (for aluminium hanger brackets)	
	4 343 1053 88 (for cross member)	
1x Lock nut	4 247 4022 80	item 5
2x disc	1 331 0117 00	item 2
3x hex bolt	4 343 1006 88	item 9
3x spring washer	4 141 0002 00	item 10
1x threaded bolt	4 375 0903 45	item 8

## Two kits are required for each lift axle

### Installation Instruction

#### Installation of the lift arm:

- Remove the existing suspension mounting bolts (**pos. 3 - 4** re-use).
- Position the lift arm (**6**) over the hanger bracket or cross member.
- Mount the spring bearing according to the illustration, **pos. 1, 2, 5** new from the kit, re-use **pos. 3, 4**.

#### Important:

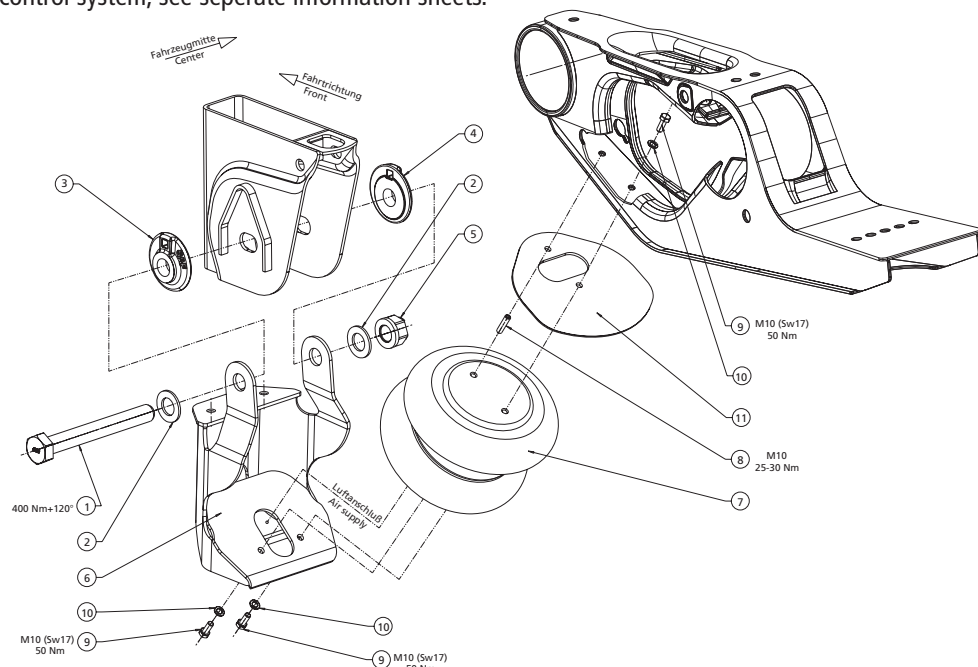
The spring bearing must be tightened according to the SAF-HOLLAND torque regulations in the ride height (see reverse: 400 Nm + 120°).

#### Installation of the lift bag:

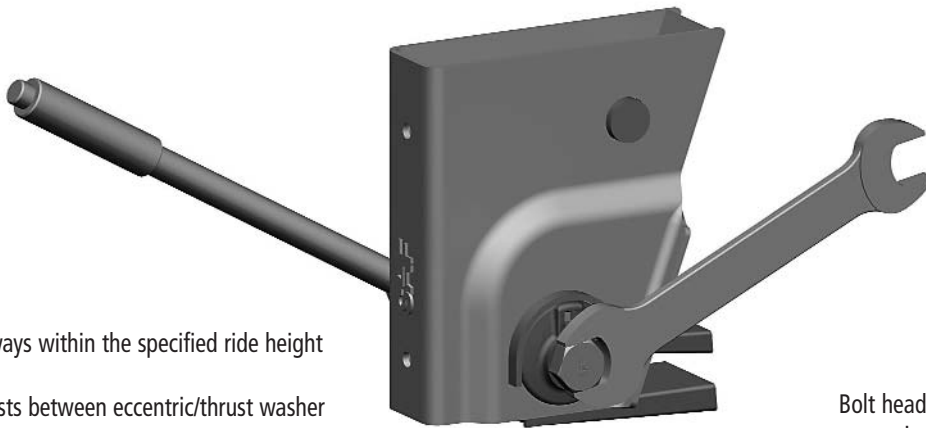
- Fix lift bag **pos. 7** from underneath with two bolts enclosed **pos. 9** and washers **pos. 10** to the lift arm (torque moment 50 Nm).
- The air connection of the lift bag **must** point down to the lift arm **pos. 6**, as illustrated.
- Screw the threaded bolt **pos. 8** to the upper bag plate as illustrated (torque moment 25 - 30 Nm).
- Air bag **pos. 7** and protection plate **pos. 11** are locked by the threaded bolt **pos. 8** and fixed with bolt **pos. 9** as well as the washer **pos. 10** from the inner side of the arm (torque moment 50 Nm).

#### Please note:

- Circuit diagrams for axle lift control system, see separate information sheets.



# Tightening instructions for adjustable suspension arm bearing



## Attention:

Bearing always within the specified ride height range!

No paint rests between eccentric/thrust washer and hanger!

Bolt head always on the same side of the eccentric washer.

