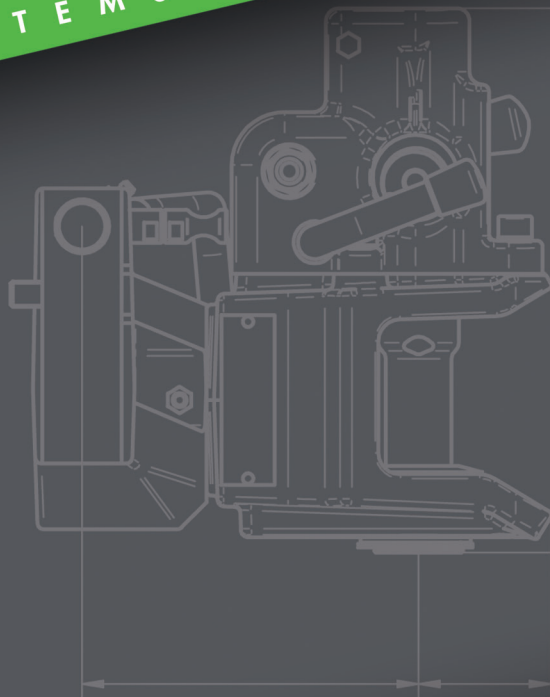
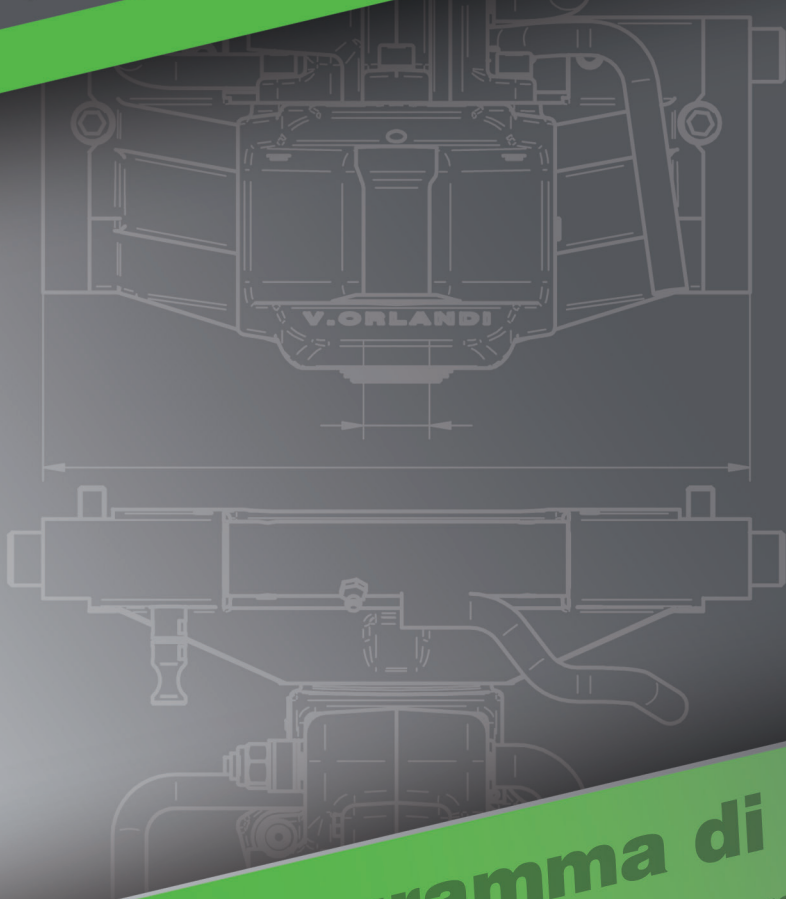




V. ORLANDI

TOWING SYSTEMS



Programma di produzione

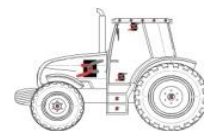
Production programme


Sistemi di traino per macchine agricole
Towing system agriculture and forestry


since 1859


ed.07


INDICE GENERALE - GENERAL INDEX





Model	GANCI DI TRAINO GIREVOLI - SWIVEL TRAILER COUPLING CLEVIS TYPE 	pag.
AH31	Gancio automatico serie pesante - perno cilindrico Ø31 mm / perno a botte Ø38 mm <i>Heavy-duty automatic coupling - cylindrical pin Ø 31 mm / barrel pin Ø 38 mm</i>	4
AH38	Gancio automatico serie pesante - perno a botte Ø38 mm <i>Heavy-duty automatic coupling - barrel pin Ø 38 mm</i>	6
AH 40	Gancio automatico - perno a botte Ø40 mm <i>Heavy-duty automatic coupling - barrel pin Ø 40 mm</i>	8
MH31	Gancio manuale - perno cilindrico Ø 32 mm - <i>Manual coupling cylindrical pin Ø 32 mm</i> Gancio manuale serie pesante - perno cilindrico Ø 32 mm - <i>Heavy-duty manual coupling - cylindrical pin Ø 32 mm</i>	10
MHJH	Gancio manuale - perno cilindrico Ø 32 mm - <i>Manual coupling cylindrical pin Ø 32 mm</i> Gancio manuale serie pesante - perno cilindrico Ø 32 mm - <i>Heavy-duty manual coupling - cylindrical pin Ø 32 mm</i>	12


Model	GANCI DI TRAINO NON GIREVOLI - NON SWIVEL TRAILER COUPLING CLEVIS TYPE 	pag.
AH28	Gancio automatico - perno cilindrico Ø 28 mm - <i>Automatic coupling - cylindrical pin Ø 28 mm</i>	14
MH18	Gancio manuale - perno cilindrico Ø 18 mm - <i>Manual coupling - cylindrical pin Ø 18 mm</i>	16
MH28	Gancio manuale - perno cilindrico Ø 28 mm - <i>Manual coupling - cylindrical pin Ø 28 mm</i>	17
MH28X	Gancio manuale - perno cilindrico Ø 28 mm - <i>Manual coupling - cylindrical pin Ø 28 mm Dynamic test</i>	17
MH28M	Gancio manuale - perno cilindrico Ø 28 mm - <i>Manual coupling - cylindrical pin Ø 28 mm</i>	18
MH43M	Gancio manuale - perno cilindrico Ø 43 mm - <i>Manual coupling - cylindrical pin Ø 43 mm</i>	20
MH50M	Gancio manuale - perno cilindrico Ø 50 mm - <i>Manual coupling - cylindrical pin Ø 50 mm</i>	21
MH43	Gancio manuale - perno cilindrico Ø 43 mm - <i>Manual coupling - cylindrical pin Ø 43 mm</i>	22
MH50	Gancio manuale - perno cilindrico Ø 50 mm - <i>Manual coupling - cylindrical pin Ø 50 mm</i>	23
MH43-6	Gancio manuale - perno cilindrico Ø 43 mm - <i>Manual coupling - cylindrical pin Ø 43 mm</i>	24
MH50-6	Gancio manuale - perno cilindrico Ø 50 mm - <i>Manual coupling - cylindrical pin Ø 50 mm</i>	25

Model	GANCI DI MANOVRA 	pag.
GM 10		26

Model	PITON FIXE 	pag.
SP00	Supporto scorrevole con piton fixe - <i>Lift Piton-fixe support</i>	27
SP45	Supporto con piton fixe - <i>Piton-fixe support</i>	28
GP45	Supporto flangiabile con piton fixe - <i>Flanges Piton-fixe support</i>	29

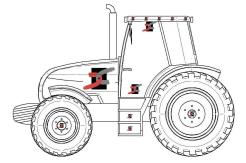
Model	GANCI A SFERA - BALL COUPLING 	pag.
GS80	Gancio a sfera flangiabile - <i>Lift Piton-fixe support</i>	30

Model	BARRE DI TRAINO - SWINGING DRAWBARS 	pag.
BT	Barra di traino CEE- perno cilindrico Ø 32 mm - <i>CEE drawbar - cylindrical pin Ø 32 mm</i>	31

Model	SUPPORTI SCORREVOLI FLANGIATI - FLANGED LIFT BEARINGS 	pag.
LB 40	Slitta scorrevole flangiata - <i>Flanged lift bearing</i>	32
LB 41	Slitta scorrevole flangiata - <i>Flanged lift bearing</i>	33
LB 42	Slitta scorrevole flangiata - <i>Flanged lift bearing</i>	34
LB 32	Slitta scorrevole flangiata - <i>Flanged lift bearing</i>	35

Model	PARAMETRI TECNICI - TECHNICAL PARAMETERS	pag.
Appendix	METODOLOGIA DI CALCOLO - <i>CALCULATION METHOD</i>	36
Notes	NOTE	37

AH31

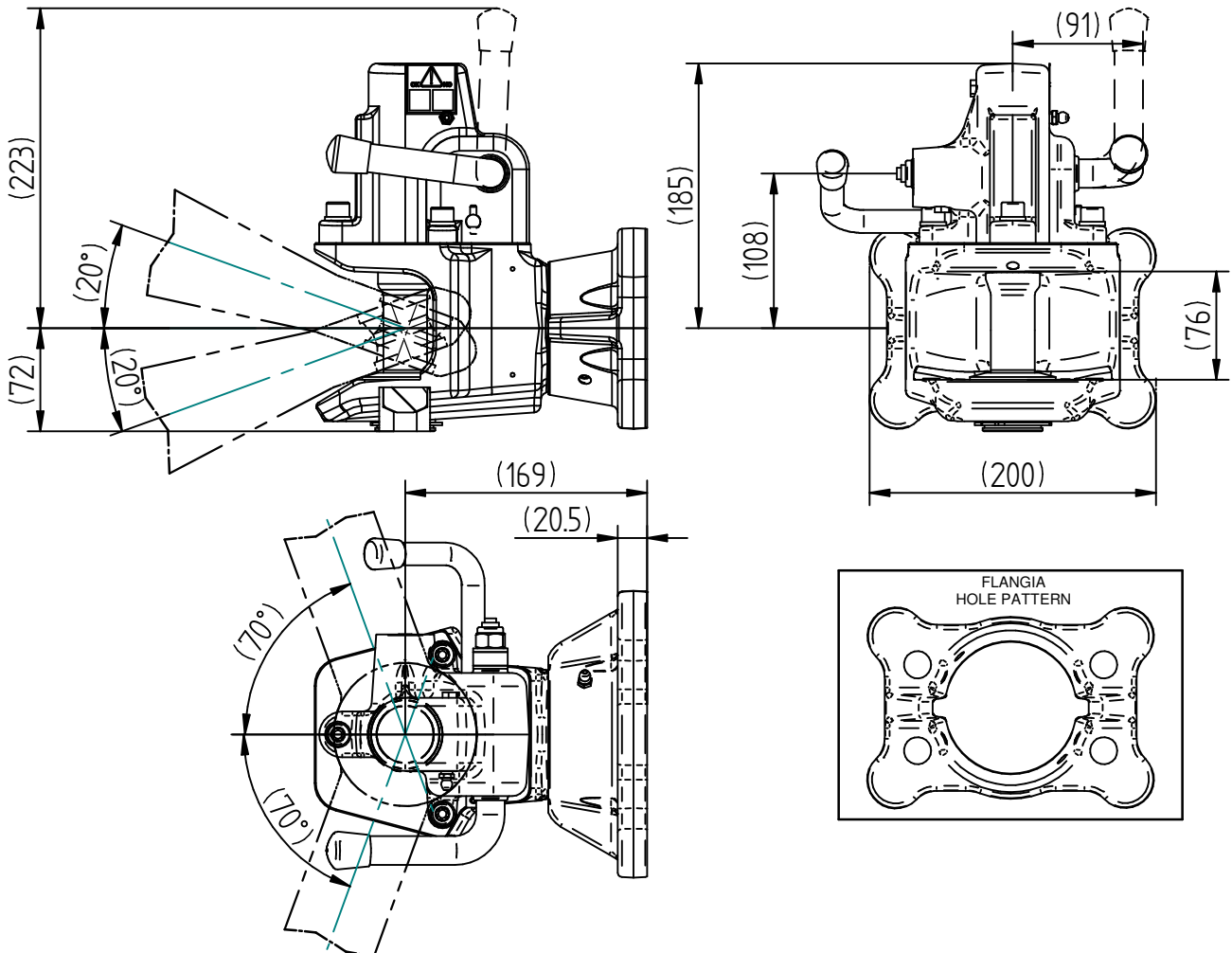


**Gancio automatico serie pesante
perno cilindrico Ø31**
**Heavy duty automatic coupling
cylindrical pin Ø31**

STANDARD DIMENSIONALI dimensional standards	DIN 11028 ; ISO 6489-2 ; 2009/144/CE ; 2016/1788
GIREVOLE swivel	360°
per OCCHIONI non girevoli for no swivel draw-bar eyes	Ø 40 ISO 5692-2 ; ISO 8755 ; DIN 11026 ; DIN 11043 ; DIN 74054

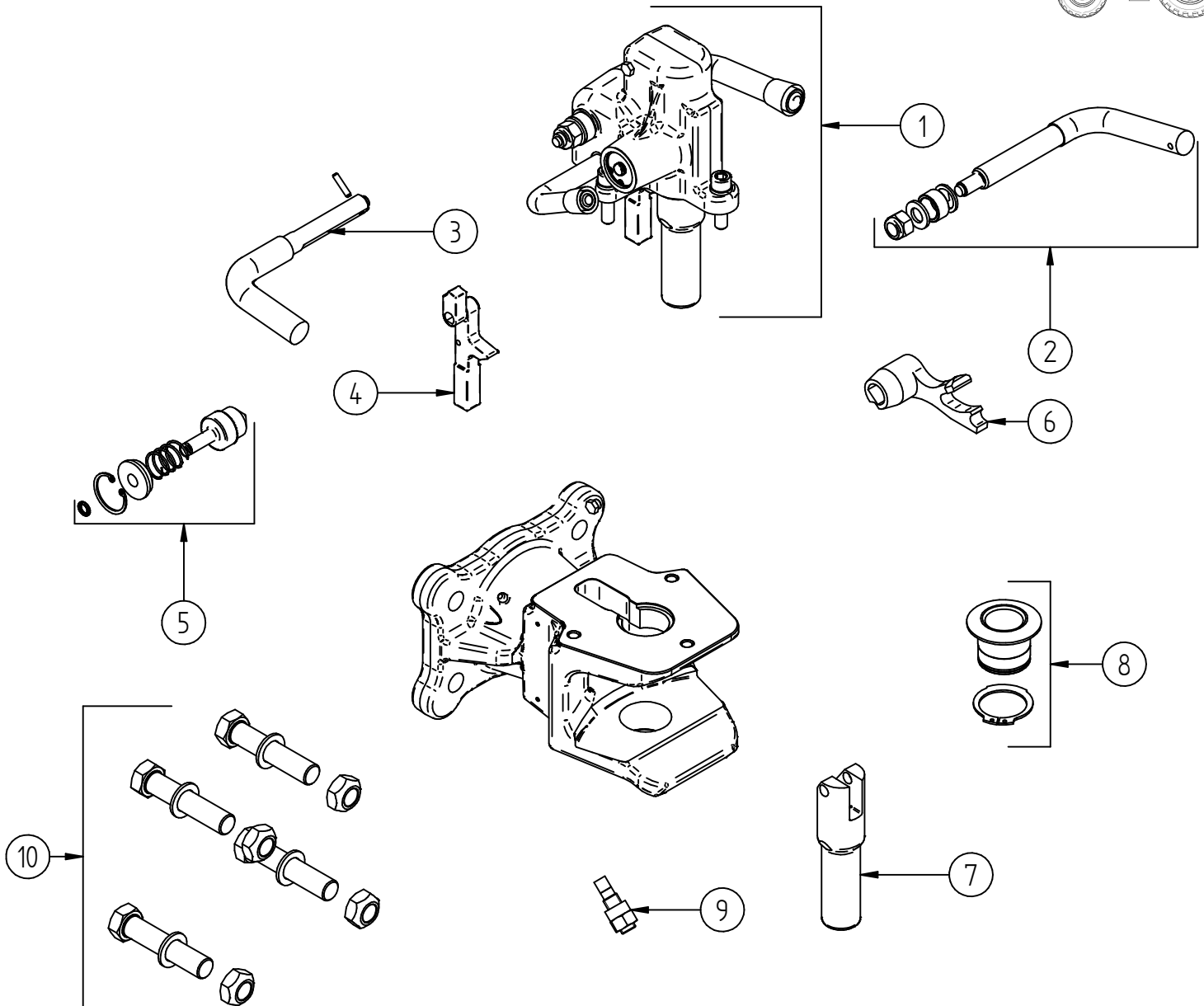
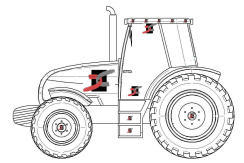
Dati tecnici - Technical data

Modello - Model	Codice Article number	Flangia Hole pattern (mm)	Viti di fissaggio Fixing screws	Valore D D-Value (kN)	Carico verticale S S-Load (kg)	Omologazione Homologation	Peso Weight (kg)
AH31	AH31 0 B3	120 X 55	M14	60	2000	e5*2015/208*2018/829ND*01005	18
	AH31 0 B1	130 X 60	M18	100	2500	e3*2015/208*2018/829ND*30009	18
	AH31 0 B4	140 X 80	M16	100	2500	e3*2015/208*2018/829ND*30009	18
	AH31 0 B5	160 X 100	M20	100	2500	e3*2015/208*2018/829ND*30009	18



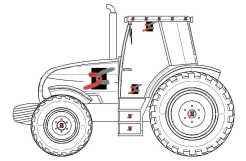
AH31

Ricambi - Spare parts




POS.	Tutti i tipi All types	Codice - article number			
		AH 31 0B1	AH 31 0B4	AH 31 0B5	AH 31 0B3
1		RA 00 034	RA 00 034	RA 00 034	RA 00 034
2	RA 00 283				
3	RA 00 282				
4	RA 00 280				
5	RA 00 143				
6	RA 00 091				
7		RA 00 035	RA 00 035	RA 00 035	RA 00 035
8	RA 00 028				
9	RA 00 093				
10		RA 00 040	RA 00 033	RA 00 190	RA 00 133

AH38

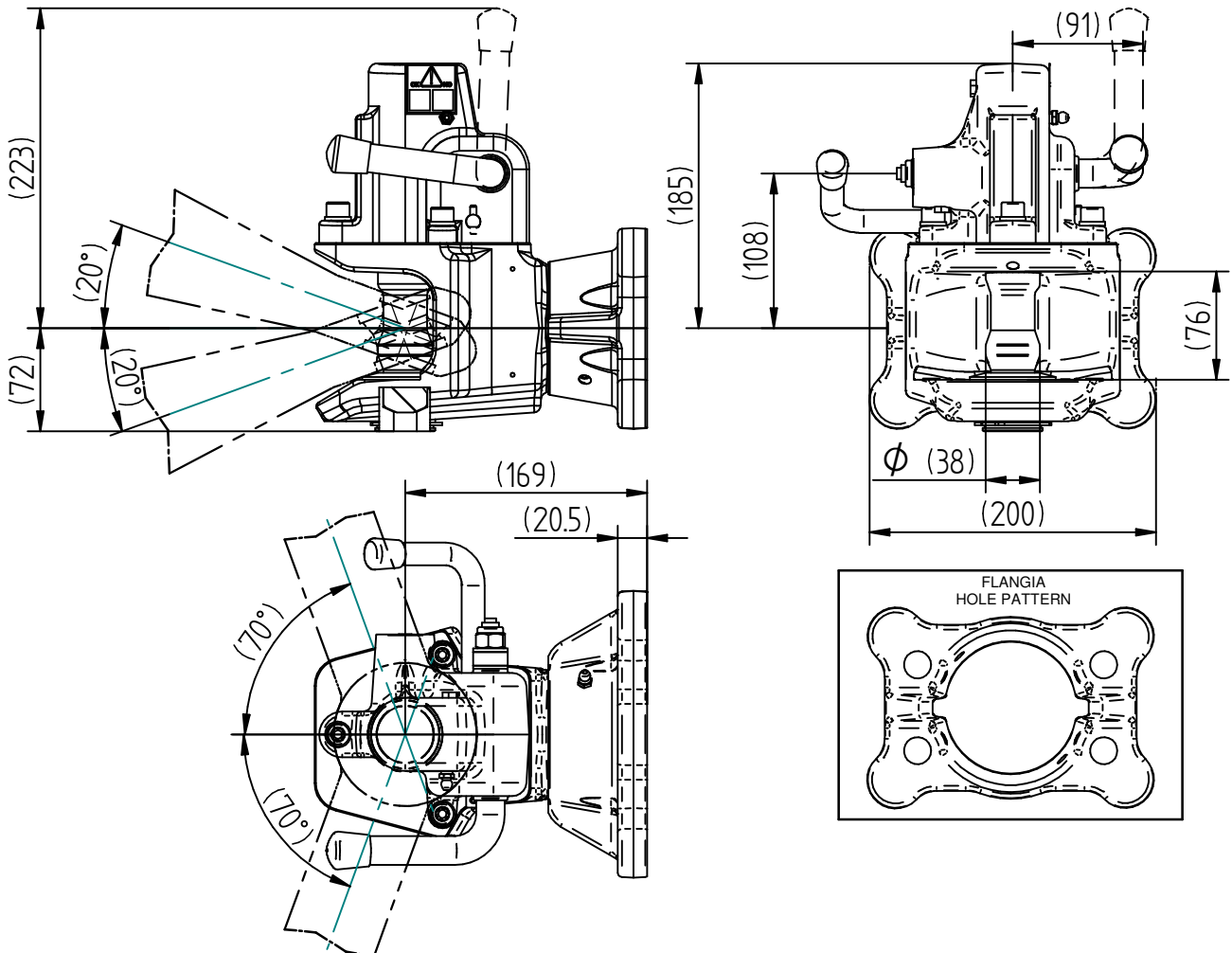


**Gancio automatico serie pesante
perno a botte Ø38**
**Heavy duty automatic coupling
barrel pin Ø38**

STANDARD DIMENSIONALI dimensional standards	DIN 11028 ; ISO 6489-2 ; 2009/144/CE ; 2015/208
GIREVOLE swivel	 360°
per OCCHIONI non girevoli for no swivel draw-bar eyes	Ø 40 ISO 5692-2 ; ISO 8755 ; DIN 11026 ; DIN 11043 ; DIN 74054

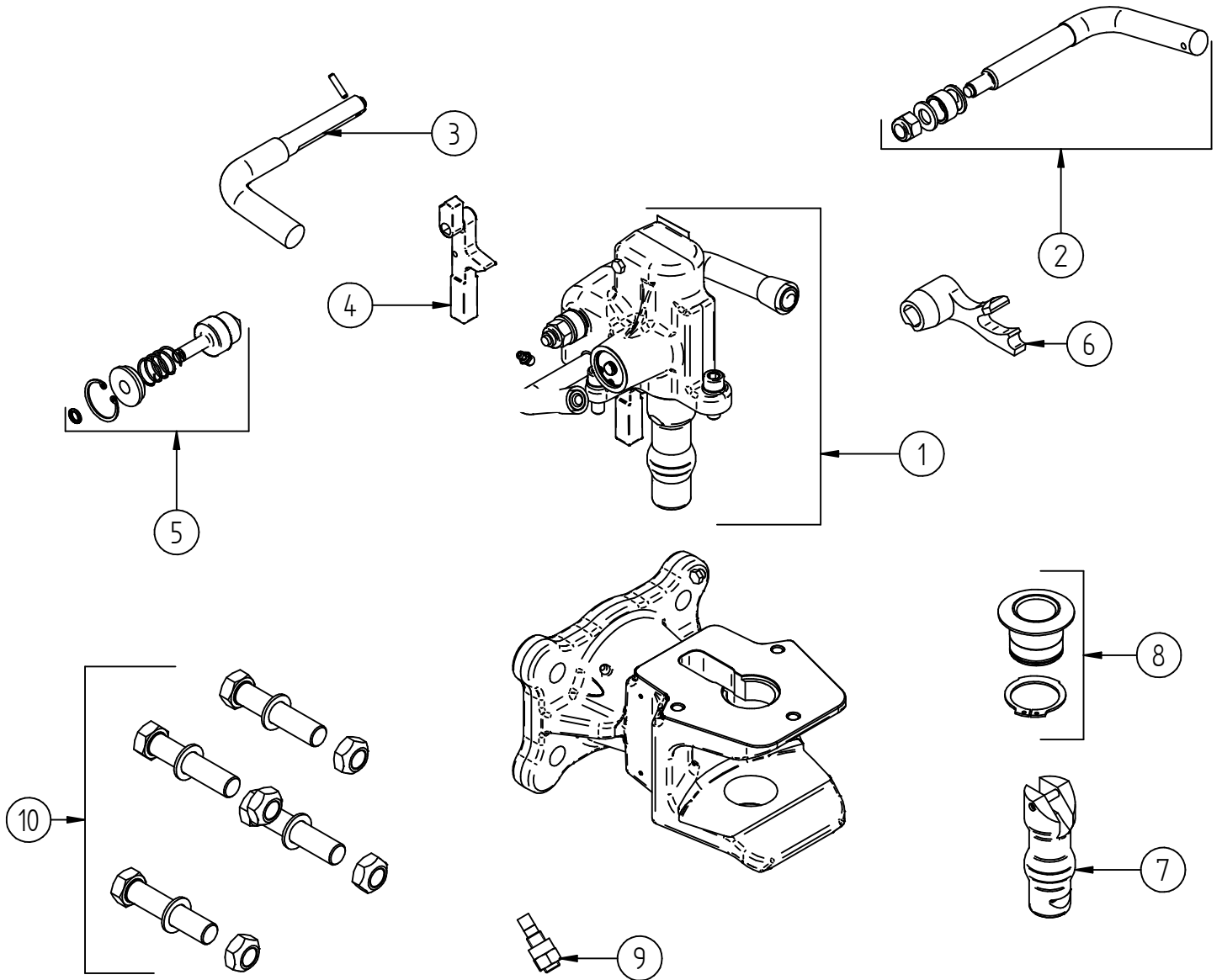
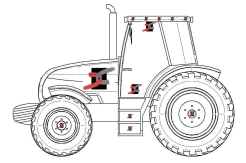
Dati tecnici - Technical data

Modello - Model	Codice Article number	Flangia Hole pattern (mm)	Viti di fissaggio Fixing screws	Valore D D-Value (kN)	Carico verticale S S-Load (kg)	Omologazione Homologation	Peso Weight (kg)
AH38	AH38 0 A3	120 X 55	M14	60	2000	e5*2015/208*2018/829ND*01005	18
	AH38 0 A1	130 X 60	M18	100	2500	e3*2015/208*2018/829ND*30009	18
	AH38 0 A4	140 X 80	M16	100	2500	e3*2015/208*2018/829ND*30009	18
	AH38 0 A5	160 X 100	M20	100	2500	e3*2015/208*2018/829ND*30009	18



AH38

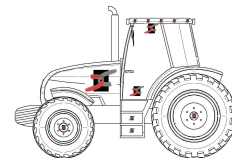
Ricambi - Spare parts




POS.	Tutti i tipi All types	Codice - article number			
		AH 38 0A1	AH 38 0A4	AH 38 0A5	AH 38 0A3
1		RA 00 007	RA 00 007	RA 00 007	RA 00 007
2	RA 00 283				
3	RA 00 282				
4	RA 00 280				
5	RA 00 143				
6	RA 00 091				
7		RA 00 029	RA 00 029	RA 00 029	RA 00 029
8	RA 00 028				
9	RA 00 093				
10		RA 00 040	RA 00 033	RA 00 190	RA 00 133



AH40

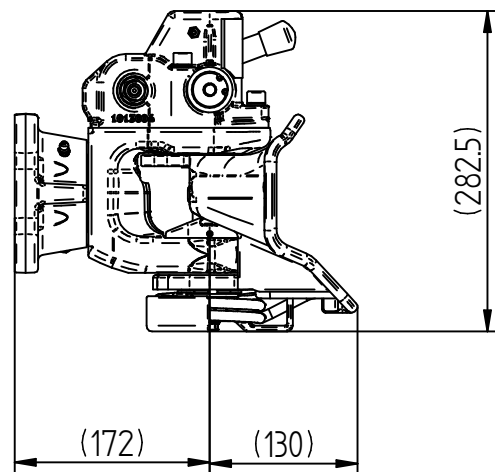
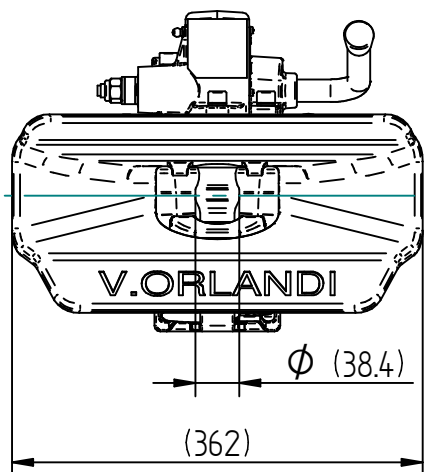


**Gancio automatico serie pesante
perno a botte Ø40**
**Heavy duty automatic coupling
barrel pin Ø40**

STANDARD DIMENSIONALI dimensional standards	ECE R55-01
GIREVOLE swivel	 360°
per OCCHIONI non girevoli for no swivel draw-bar eyes	Ø 40 ISO 5692-2 ; ISO 8755 ; DIN 11026 ; DIN 11043 ; DIN 74054

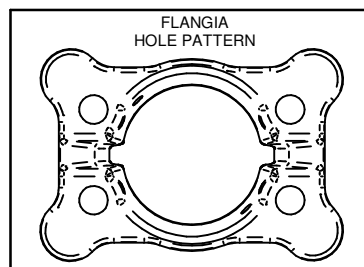
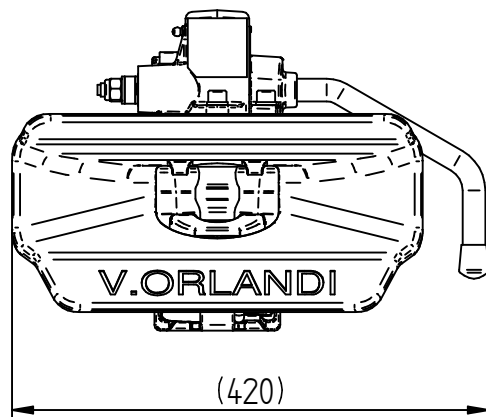
Dati tecnici - Technical data								
Modello - Model	Codice Article number	Flangia Hole pattern mm	Viti di fissaggio Fixing screws	Valore D D-Value kN	Valore Dc Dc-Value kN	Carico verticale S S-Load (kg)	Omologazione Homologation ECE R55-01	Peso Weight kg
AH40	AH 40 003	120x55	M14	70	70	700	E11*55R-01*11077	29
	AH 4B 003	120x55	M14	70	70	700	E11*55R-01*11077	
	AH 40 004	140x80	M16	110	92	1000	E11*55R-01*11110	
	AH 4B 004	140x80	M16	110	92	1000	E11*55R-01*11110	

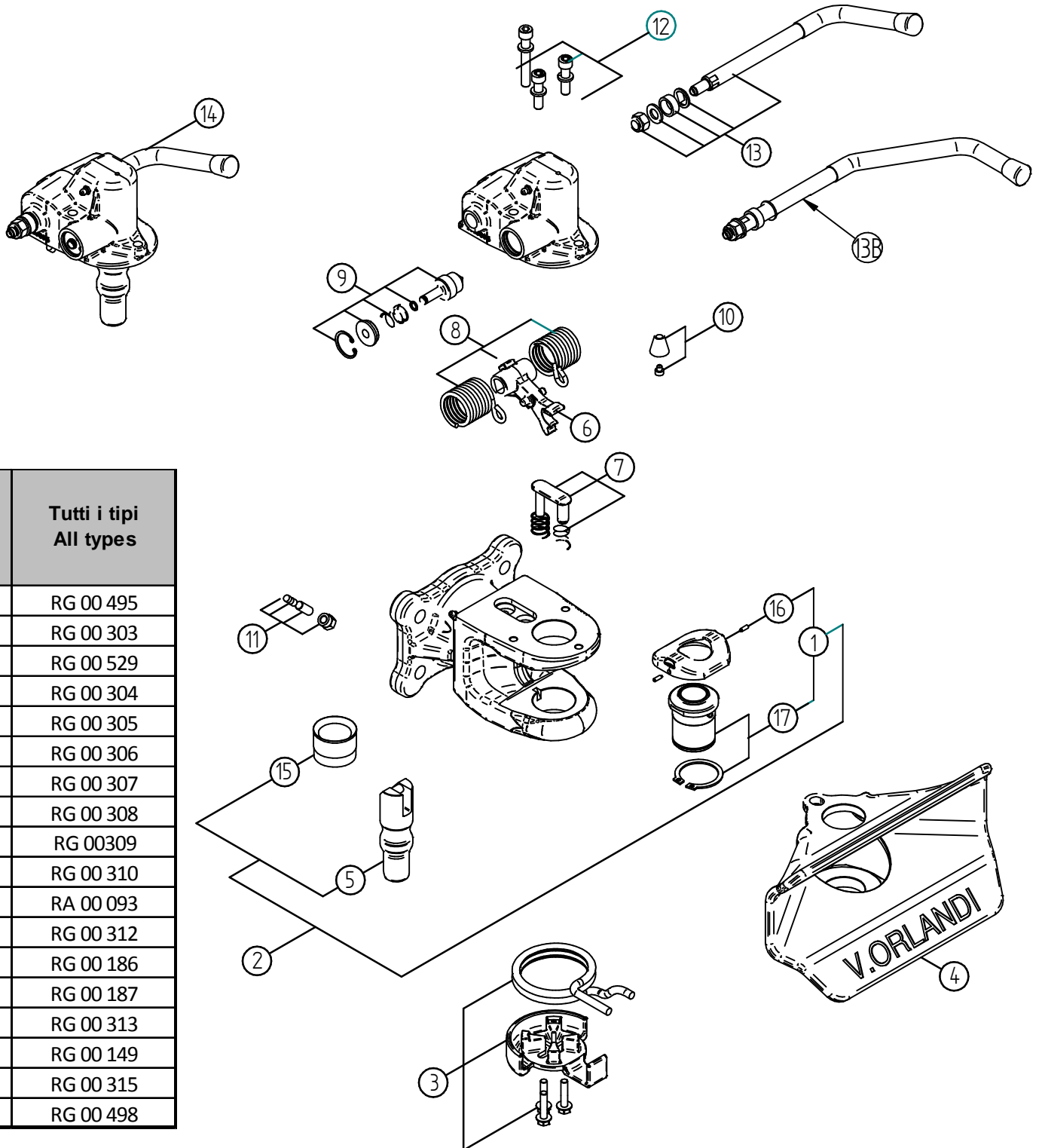
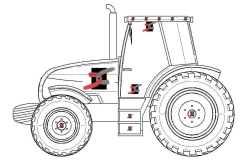
AH40



AH4B

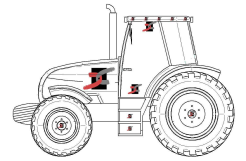
Leva bassa
Action lever downwards





Pos.	Tutti i tipi All types
1	RG 00 495
2	RG 00 303
3	RG 00 529
4	RG 00 304
5	RG 00 305
6	RG 00 306
7	RG 00 307
8	RG 00 308
9	RG 00309
10	RG 00 310
11	RA 00 093
12	RG 00 312
13	RG 00 186
13B	RG 00 187
14	RG 00 313
15	RG 00 149
16	RG 00 315
17	RG 00 498

MH31



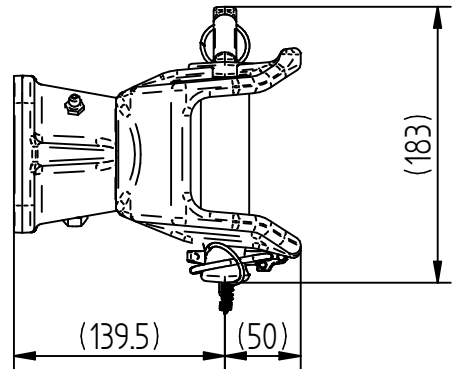
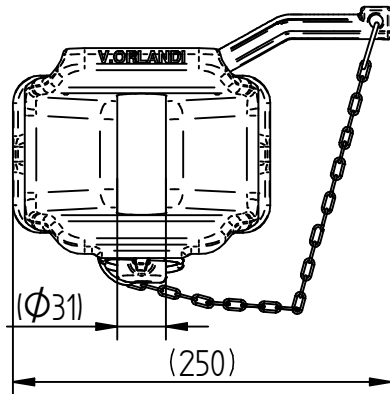
Gancio manuale - perno cilindrico Ø31
Manual coupling - cylindrical pin Ø31

STANDARD DIMENSIONALI dimensional standards	DIN 11028 ; ISO 6489-2 ; 2009/144/CE ; 2015/208
GIREVOLE swivel	360°
per OCCHIONI non girevoli for no swivel draw-bar eyes	Ø 40/50 ISO 5692 ; ISO 8755 ; ISO 20019 ; DIN 11026 ; DIN 11043 ; DIN 74054 ; DIN 74053

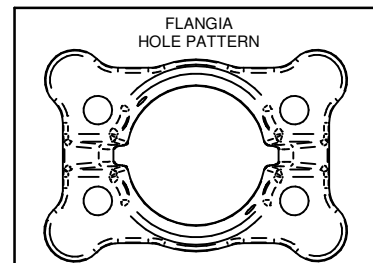
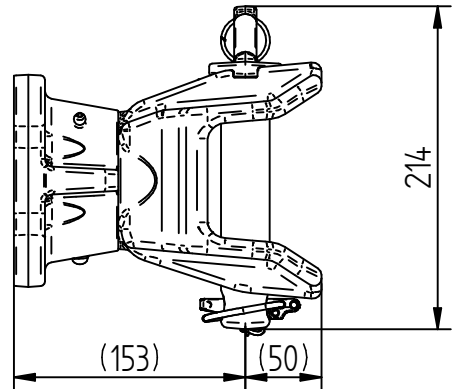
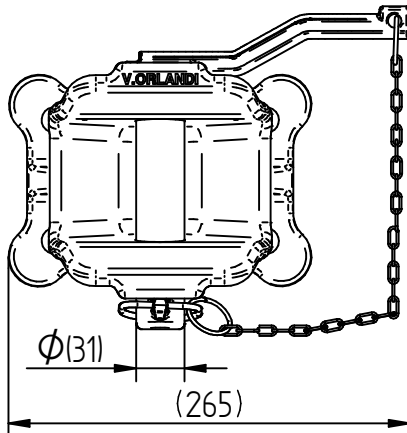
Dati tecnici - Technical data

Modello - Model	Codice Article number	Flangia Hole pattern (mm)	Viti di fissaggio Fixing screws	Valore D D-Value (kN)	Carico verticale S S-Load (kg)	Omologazione Homologation	Peso Weight (kg)
MH31	MH31 0 F3	120 X 55	M14	60	2000	e3*2015/208*2018/829ND*30087	9,5
	MH31 0 F1	130 X 60	M18	60	2000	e3*2015/208*2018/829ND*30087	
MH31H Heavy Duty	MH31 0 E1	130 X 60	M18	100	2500	e3*2015/208*2018/829ND*30010	14,5
	MH31 0 E4	140 X 80	M16	100	2500	e3*2015/208*2018/829ND*30010	
	MH31 0 E5	160 X 100	M20	100	2500	e3*2015/208*2018/829ND*30010	

MH 31



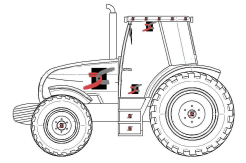
MH 31H Heavy Duty



MH 31 - MH31H

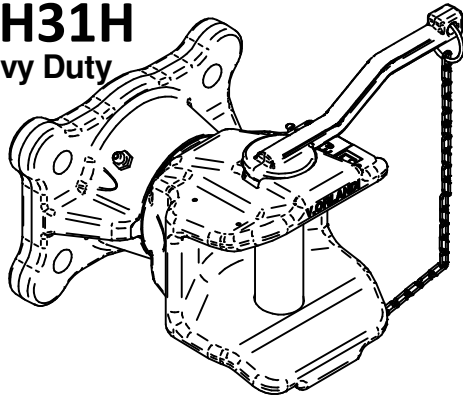
Heavy Duty

Ricambi - Spare parts

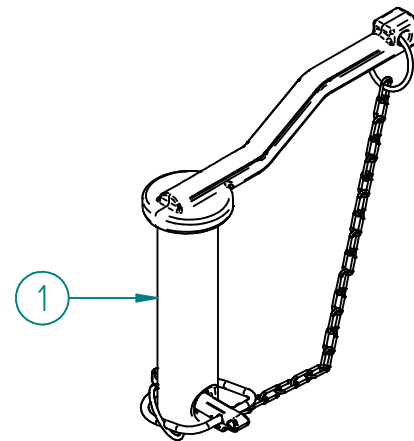
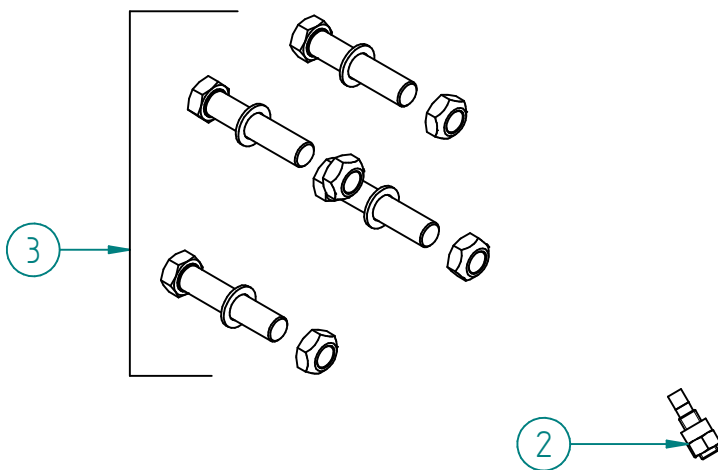
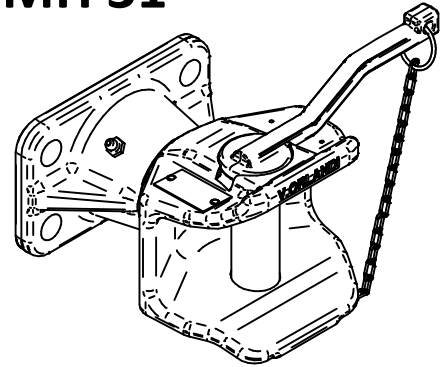


MH31H

Heavy Duty

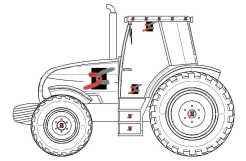


MH 31



POS.	Tutti i tipi All types	Codice - Article number				
		MH 31 0F1	MH 31 0F3	MH 31 0E1	MH 31 0E4	MH 31 0E5
1		RA 00 215	RA 00 215	RA 00 214	RA 00 214	RA 00 214
2	RA 00 093					
3		RA 00 040	RA 00 133	RA 00 040	RA 00 033	RA 00 190

MH JH



Gancio manuale - perno cilindrico

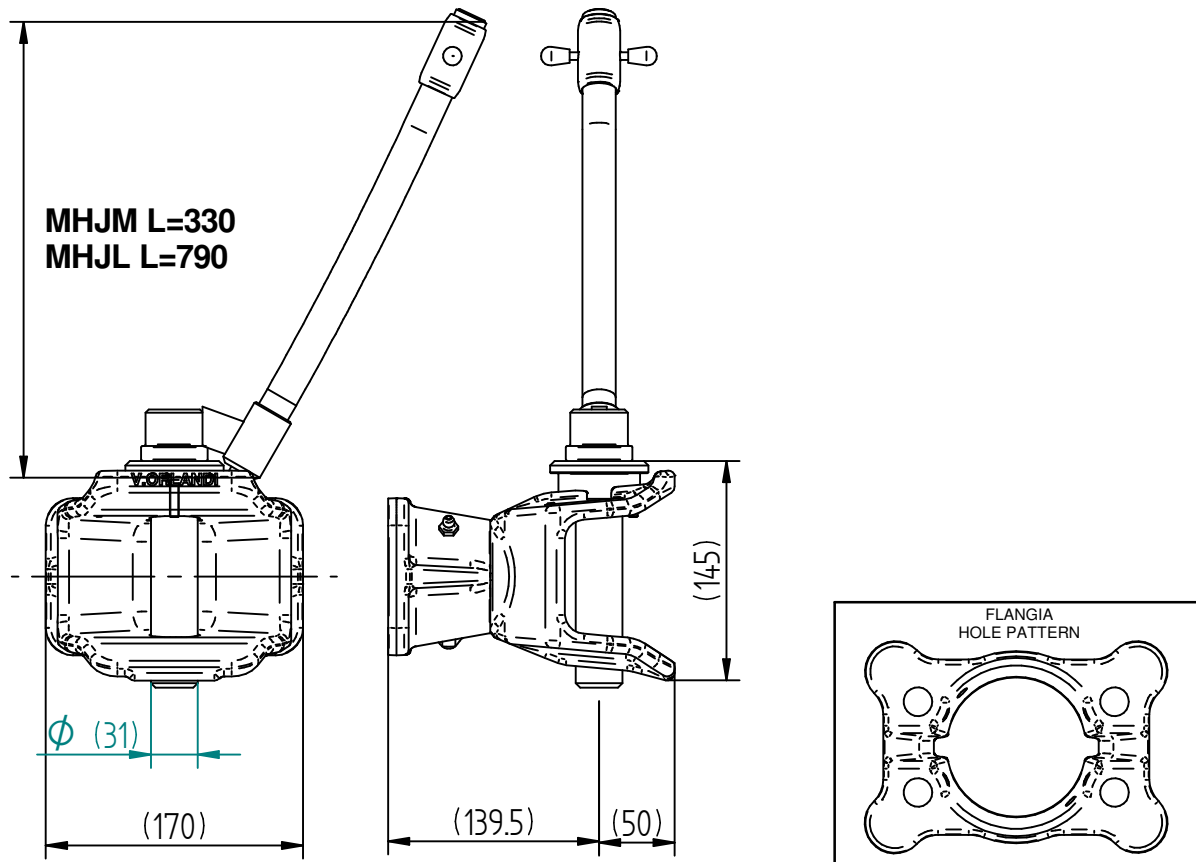
Ø31

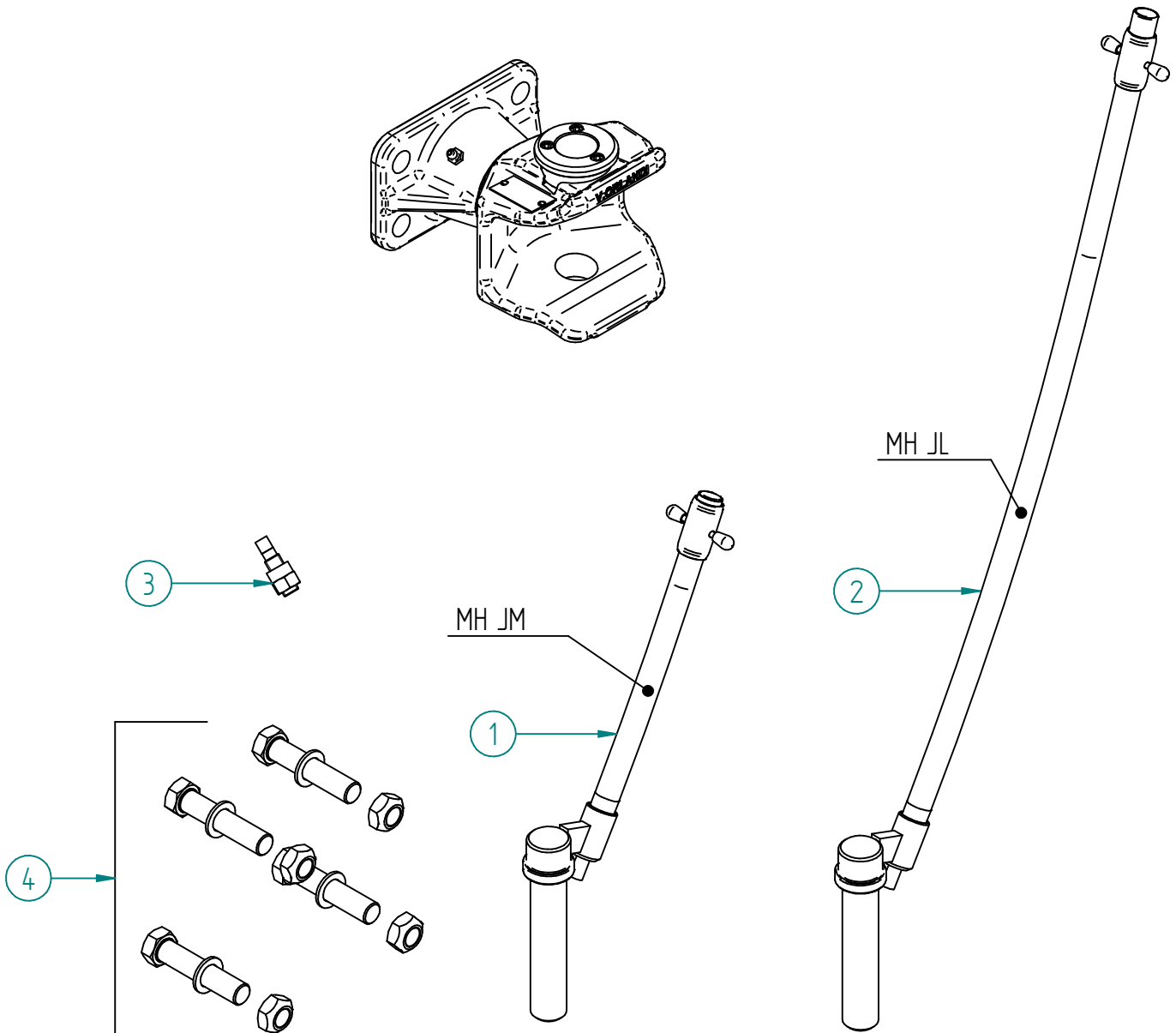
Manual coupling -cylindrical pin

Ø31

STANDARD DIMENSIONALI dimensional standards	DIN 11028 ; ISO 6489-2 ; 2009/144/CE ;2015/208
GIREVOLE swivel	360°
per OCCHIONI non girevoli for no swivel draw-bar eyes	Ø 40/50 ISO 5692-2 ; ISO 8755 ; DIN 11026 ; DIN 11043 ; DIN 74054

Dati tecnici - Technical data								
Model	Codice Article number	Flangia Hole pattern (mm)	Viti di fissaggio Fixing screws	Lunghezza perno (mm)	Valore D D-Value (kN)	Carico verticale S S-Load (kg)	Omologazione Homologation	Peso Weight (kg)
MHJH	MHJM0F1	130 X 60	M18	330	60	2000	e3*2015/208*2018/829ND*30087	9,5
	MHJM0F3	120X55	M14	330			e3*2015/208*2018/829ND*30087	
	MHJL0F1	130 X 60	M18	790	60	2000	e3*2015/208*2018/829ND*30087	9,5
	MHJL0F3	120X55	M14	790			e3*2015/208*2018/829ND*30087	



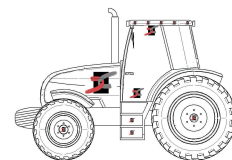



POS.	Tutti i tipi All types	Codice - Article number			
		MH JM 0 F1	MH JM 0 F3	MH JL 0 F1	MH JL 0 F3
1		RA 00 070	RA 00 070		
2				RA 00 063	RA 00 063
3	RA 00 093				
4		RA 00 040	RA 00 133	RA 00 040	RA 00 133



AH28

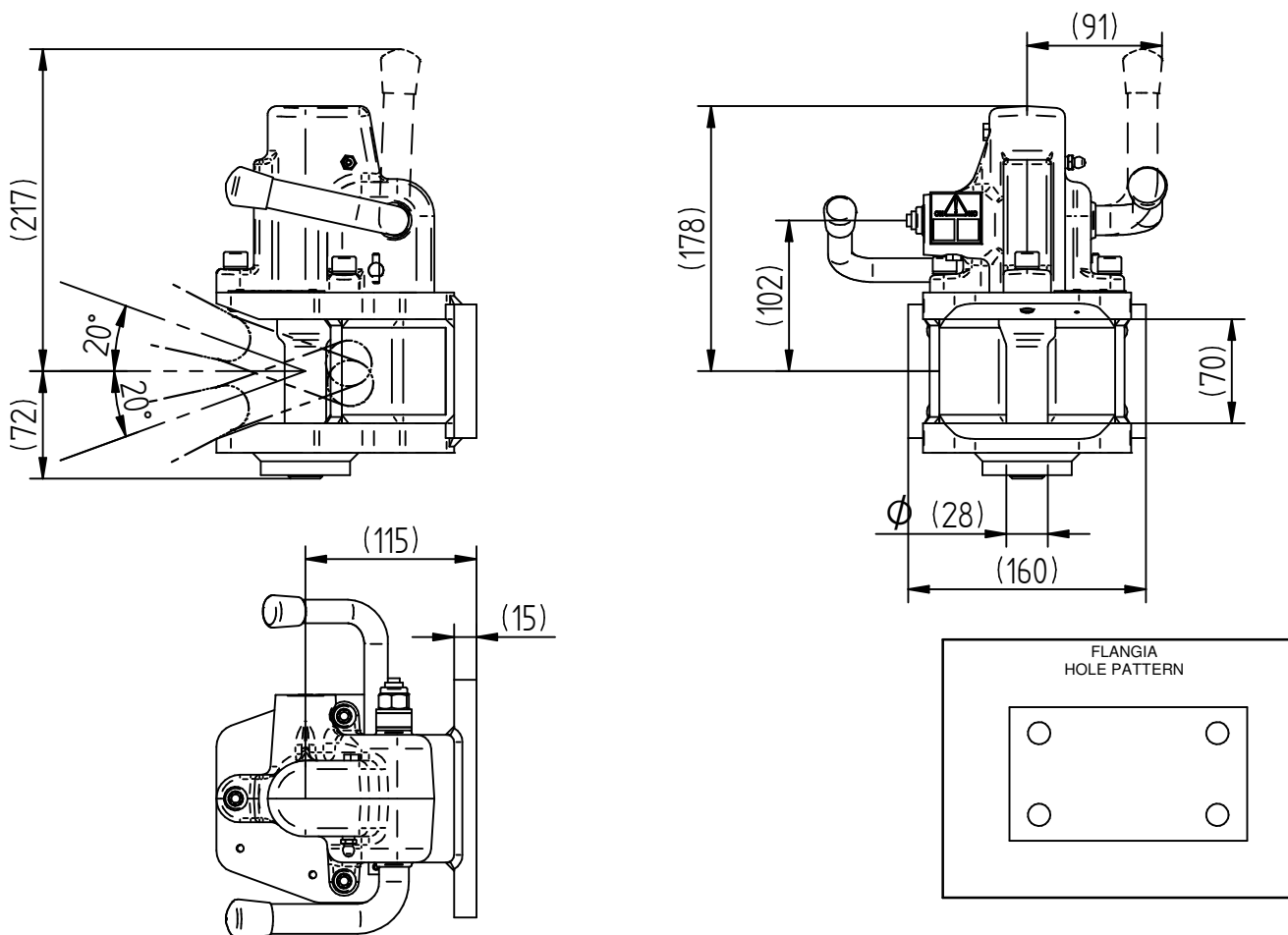
**Gancio automatico
perno cilindrico Ø28**
**Automatic coupling
cylindrical pin Ø28**

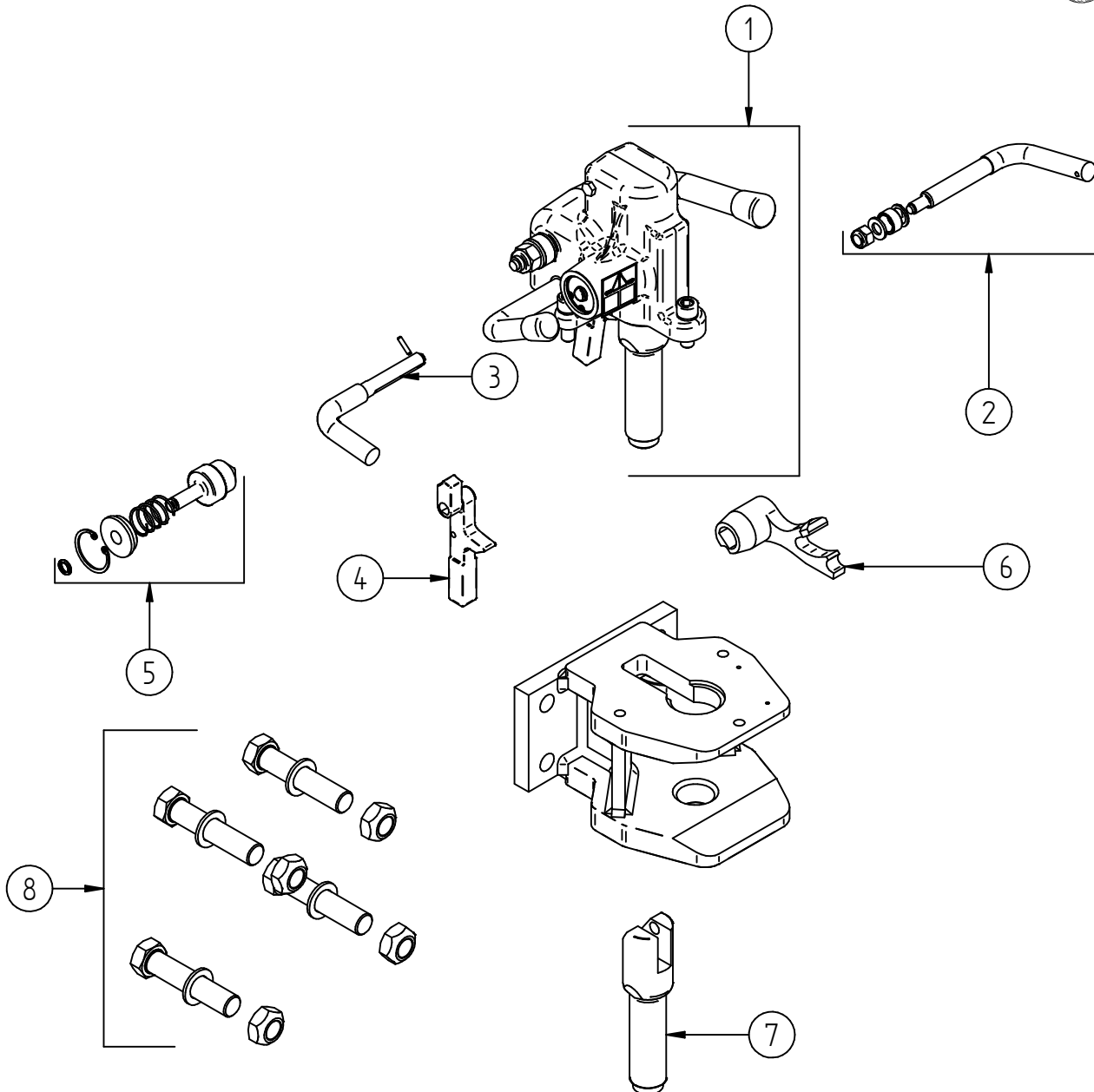
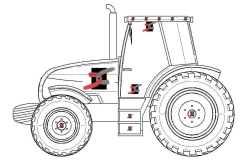


STANDARD DIMENSIONALI dimensional standards	CUNA 338.02 cat. C ; ISO 6489-5 shape x ; 2013/8/CEE;2015/208
NON GIREVOLE non-swivel	
per OCCHIONI for draw-bar eyes	CUNA 438.06 cat. E3 ; ISO 5692-3 shape X

Dati tecnici - Technical data

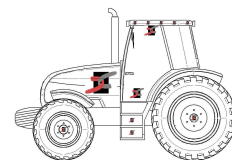
Modello - Model	Codice Article number	Flangia Hole pattern mm	Viti di fissaggio Fixing screws	categoria class	massa rimorchiabile trailer mass t	carico verticale static load daN	Omologazione Homologation	Peso Weight kg
AH28	AH28 0 G1	130 X 60	M18	C	6	1500	e3*2015/208*2018/829NS*10033	13
	AH28 0 G3	120 X 55	M14					
	AH28 0 G4	140 X 80	M16					






POS.	Tutti i tipi All types	Codice - Article number		
		AH28 0 G1	AH28 0 G3	AH28 0 G4
1	RA 00 188			
2	RA 00 141			
3	RA 00 282			
4	RA 00 280			
5	RA 00 143			
6	RA 00 091			
7	RA 00 189			
8		RA 00 040	RA 00 133	RA 00 241

MH18

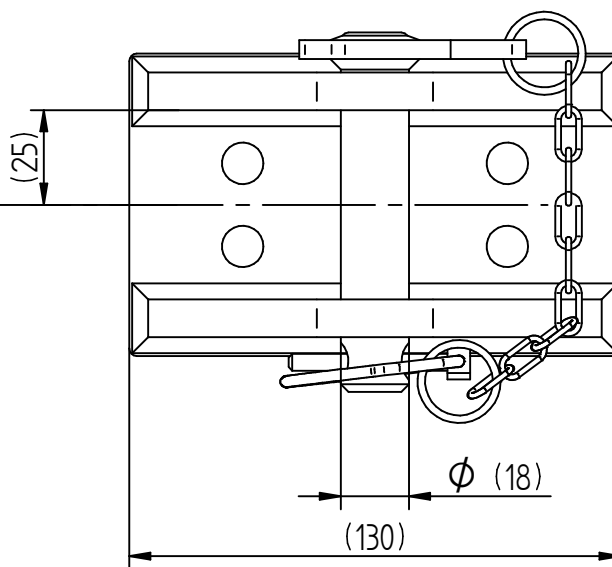
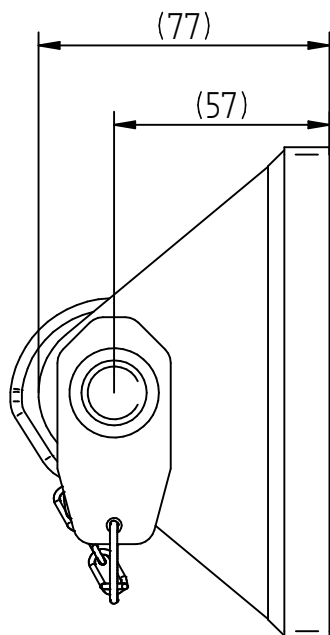
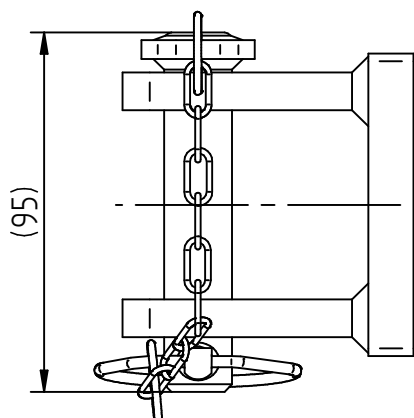


**Gancio manuale
perno cilindrico Ø18**
**Manual coupling
cylindrical pin Ø18**

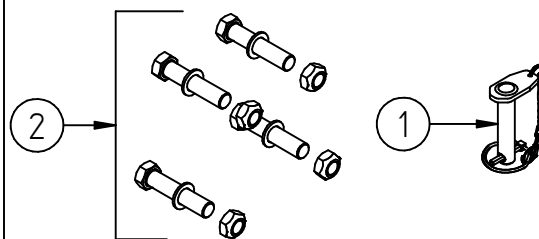
STANDARD DIMENSIONALI dimensional standards	CUNA 338.02 cat. A1 ; ISO 6489-5 shape w ; 2013/8/CEE;2015/208
NON GIREVOLE non-swivel	
per OCCHIONI for draw-bar eyes	CUNA 438.06 cat. E1 ; ISO 5692-3 shape W

Dati tecnici - Technical data

Modello - Model	Codice Article number	Flangia Hole pattern mm	Viti di fissaggio Fixing screws	massa rimorchiabile trailer mass t	carico verticale static load daN	Omologazione Homologation	Peso Weight kg
MH18	MH18 0 RX	70 X 22	M10	3	250	e3*2015/208*2018/829NS*10015	2

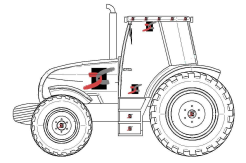


Ricambi - Spare parts




POS.	Tutti i tipi All types
1	RA 00 286
2	RA 00 284

MH28

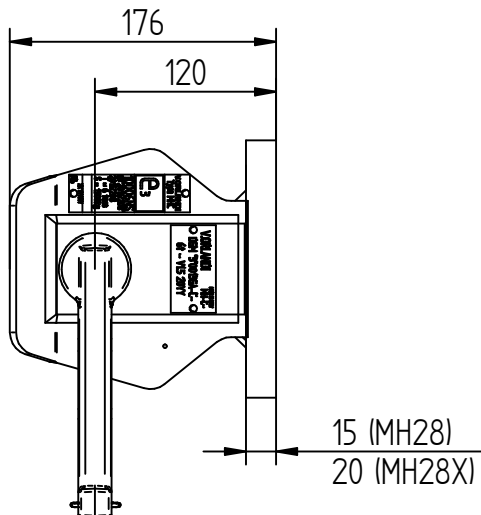
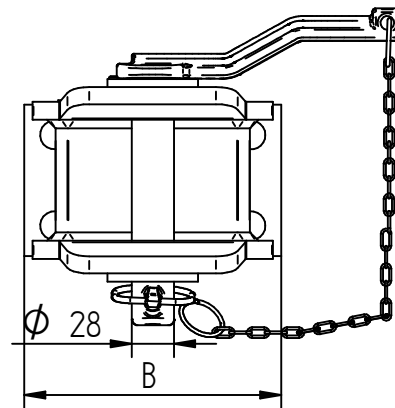
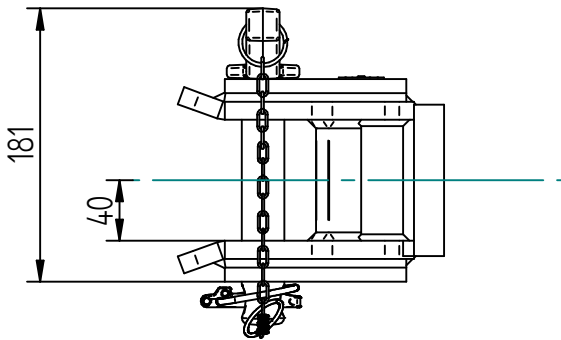


**Gancio manuale
perno cilindrico Ø28
Manual coupling
cylindrical pin Ø28**

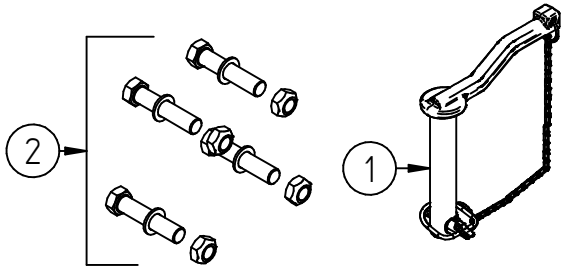
STANDARD DIMENSIONALI dimensional standards	CUNA 338.02 cat. C ; ISO 6489-5 shape x ; 2015/208
NON GIREVOLE non-swivel	
per OCCHIONI for draw-bar eyes	CUNA 438.06 cat. E3 ; ISO 5692-3 shape X

Dati tecnici - Technical data									
Modello - Model	Codice Article number	Flangia Hole pattern mm	Viti di fissaggio Fixing screws	Dimensione "B" "B" dimension	Tipo / Clevis Type ISO6849-5	massa rimorchiabile trailer mass t	carico verticale static load daN	Omologazione Homologation	Peso Weight kg
MH28	MH28 O G1	130 X 60	M18	170	X	12	2000	e3*2015/208*2018/829NS*10013	9,8
	MH28 O G3	120 X 55	M14	155		6	1500	e3*2015/208*2018/829NS*10006	
	MH28 O G4	140 X 80	M16	180		12	2000	e3*2015/208*2018/829NS*10013	
	MH28 O G5	160x100	M20	200		12	2000	e3*2015/208*2018/829NS*10013	

Dati tecnici - Technical data									
Modello - Model	Codice Article number	Flangia Hole pattern mm	Viti di fissaggio Fixing screws	Dimensione "B" "B" dimension	Tipo / Clevis Type ISO6849-5	Valore D D-Value (kN)	Carico verticale S S-Load (kg)	Omologazione Homologation	Peso Weight kg
MH28X	MH2X O G1	130 X 60	M18	170	X	50	1500	e3*2015/208*2018/829ND*10025	10,3
	MH2X O G4	140 X 80	M16	180		50	1500	e3*2015/208*2018/829ND*10025	
	MH2X O G5	160x100	M20	200		50	1500	e3*2015/208*2018/829ND*10025	

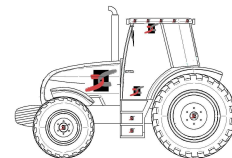


Ricambi - Spare parts




POS.	Tutti i tipi All types	Codice - Article number			
		MH 28 O G1	MH 28 O G3	MH 28 O G4	MH 28 O G5
1	RA 00 001				
2		RA 00 040	RA 00 133	RA 00 241	RA 00 190

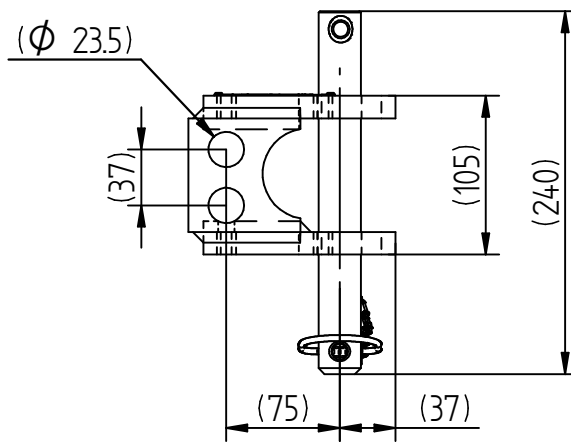
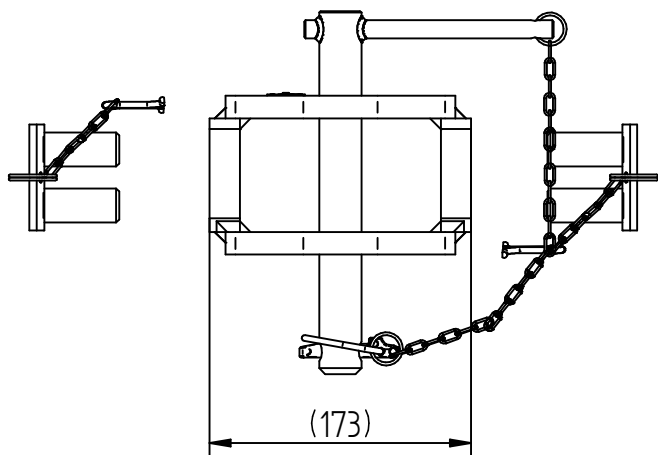
MH28M



**Gancio manuale Matriosca
perno cilindrico Ø28**
**Manual coupling Matriosca
cylindrical pin Ø28**

STANDARD DIMENSIONALI dimensional standards	CUNA 338.02 cat. C ; ISO 6489-5 shape x ; 2015/208
NON GIREVOLE non-swivel	 0°
per OCCHIONI for draw-bar eyes	CUNA 438.06 cat. E3 ; ISO 5692-3 shape X

Dati tecnici - Technical data					
Modello - Model	Codice Article number	Valore Maximum Horizontal Load D- value	carico verticale static load daN	Omologazione Homologation	Peso Weight kg
MH 28-M	MH 28 MG9	51,2	1848	e3*2015/208*2018/829ND*10021	6,5

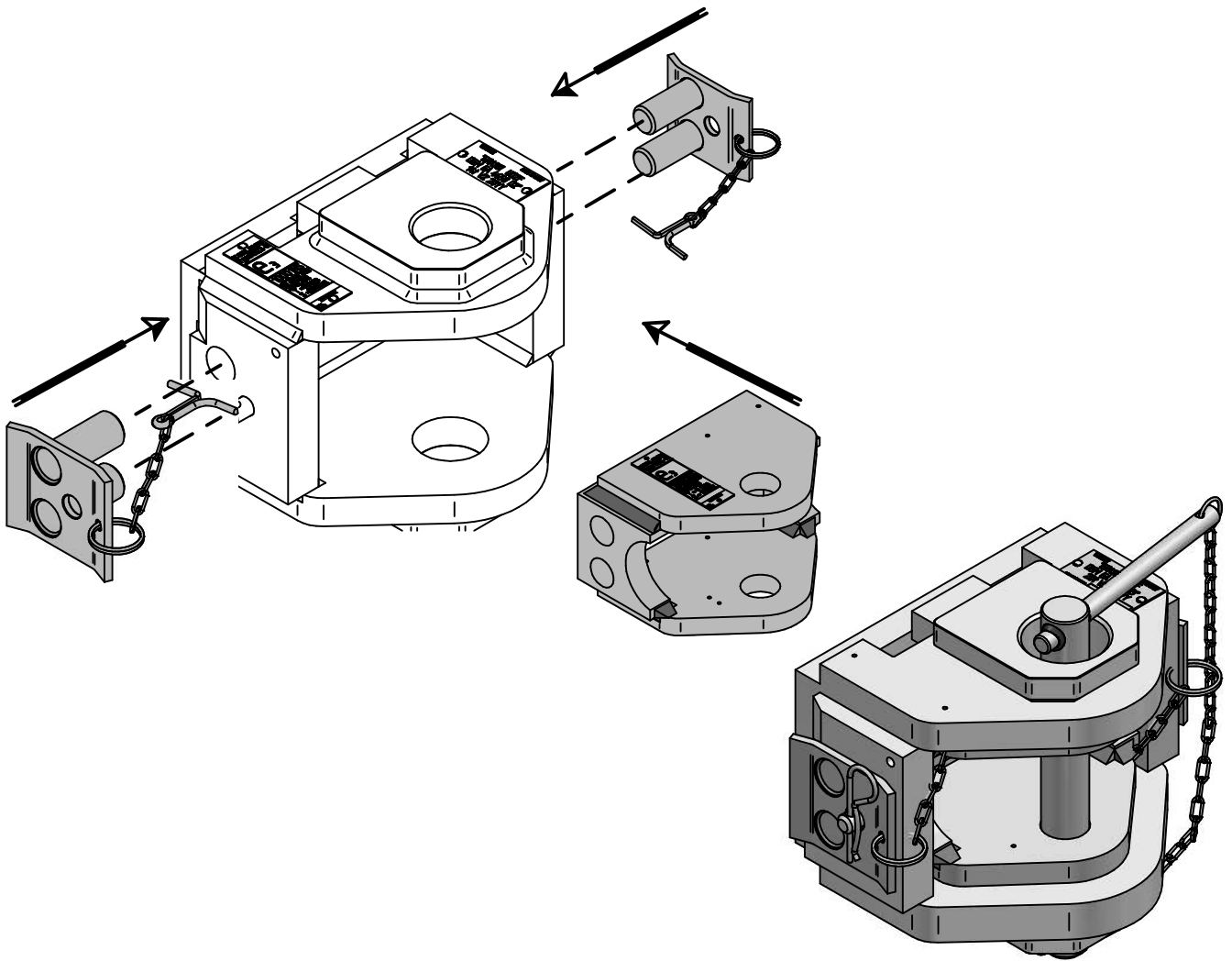
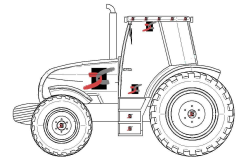


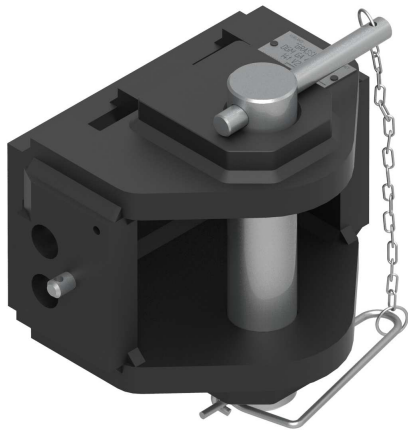
SISTEMA MATRIOSCA

Ricambi - Spare parts

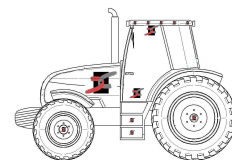
POS.	Tutti i tipi All types	Part No MH 28 MG9
1	RA 00 056	
2	RA 00 359	

Esempi di Applicazione del sistema Matriosca






MH43M

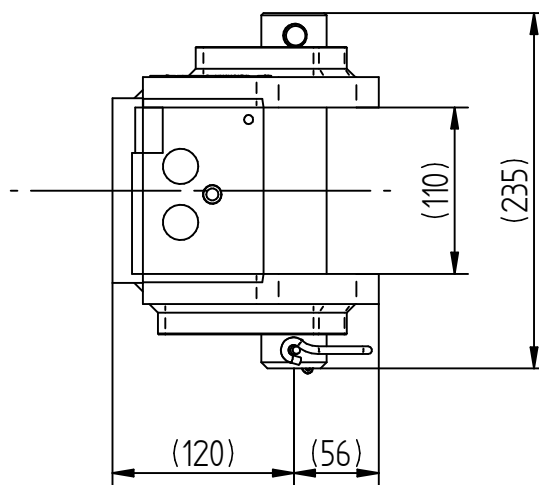
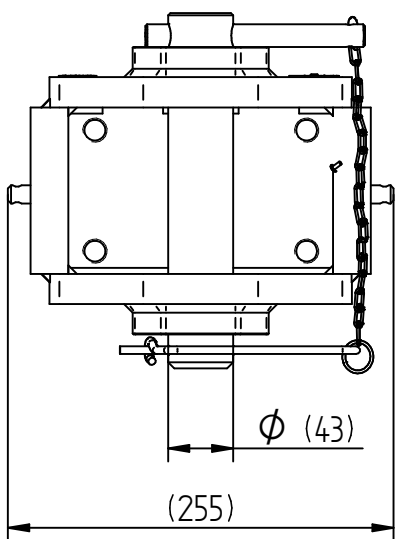


**Gancio manuale
perno cilindrico Ø43
Manual coupling
cylindrical pin Ø43**

STANDARD DIMENSIONALI dimensional standards	CUNA 338.02 cat. D2 ; ISO 6489-5 shape y ; 2015/208
NON GIREVOLE non-swivel	
per OCCHIONI for draw-bar eyes	CUNA 438.06 cat. F2 ; ISO 5692-3 shape Y

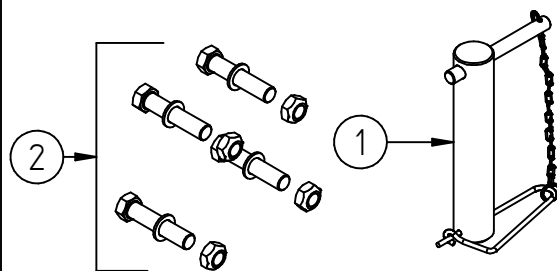
Dati tecnici - Technical data

Modello Model	Codice Article number	Flangia Hole pattern mm	Viti di fissaggio Fixing screws	Tipo / Clevis Type ISO6849- 5	massa rimorchiabile trailer mass t	carico verticale static load daN	Omologazione Homologation	Peso Weight kg
MH43M	MH43 0 L4	140 X 80	M16	Y	14	2000	e3*2015/208*2018/829NS*10001	15,5
MHD2-L4	MHD2 0 L4		M16		20			
	MHD2 0 LC		M20		20			



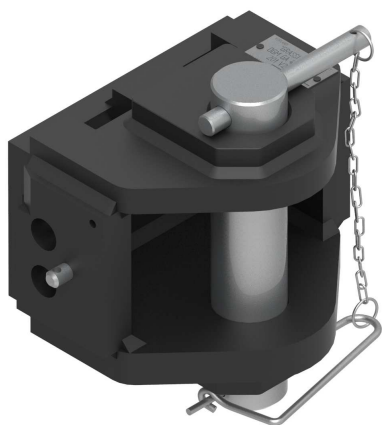
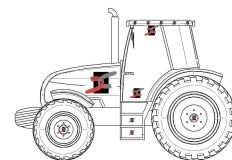
**COMPATIBILE CON
SISTEMA MATRIOSCA
SUITABLE WITH
MATRIOSCA SYSTEM**

Ricambi - Spare parts




POS.	Tutti i tipi All types	Codice - Article number
1	RA 00 023	
2	RA 00 033	

MH50M

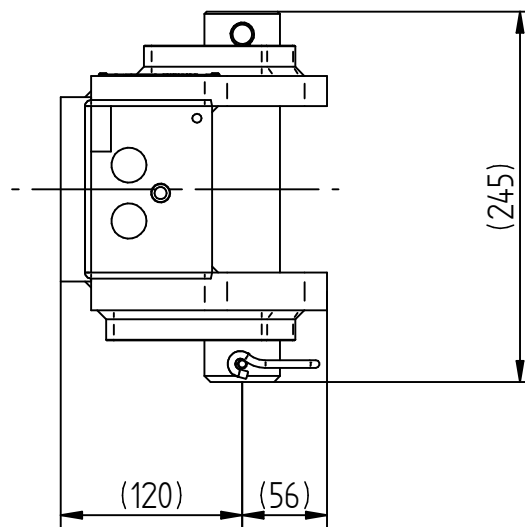
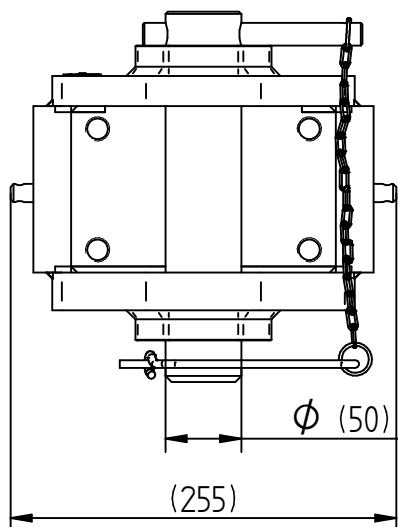


**Gancio manuale
perno cilindrico Ø50
Manual coupling
cylindrical pin Ø50**

STANDARD DIMENSIONALI dimensional standards	CUNA 338.02 cat. D3 ; ISO 6489-5 shape z; 2015/208
NON GIREVOLE non-swivel	
per OCCHIONI for draw-bar eyes	CUNA 438.06 cat. F3 ; ISO 5692-3 shape Z

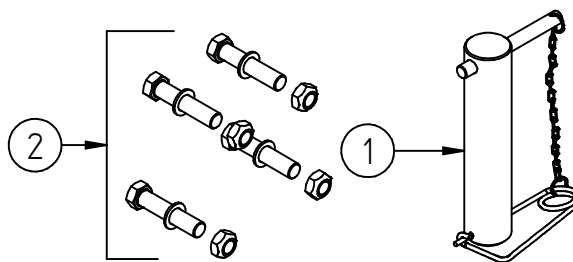
Dati tecnici - Technical data

Modello Model	Codice Article number	Flangia Hole pattern mm	Viti di fissaggio Fixing screws	massa rimorchiabile trailer mass t	carico verticale static load daN	Omologazione Homologation	Peso Weight kg
MH50M	MH50 0 M4	140 X 80	M16	20	2500	e3*2015/208*2018/829NS*10002	19,5

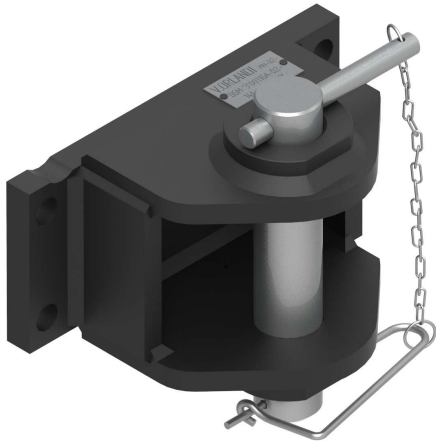


**COMPATIBILE CON
SISTEMA MARIOSCA
SUITABLE WITH
MARIOSCA SYSTEM**

Ricambi - Spare parts

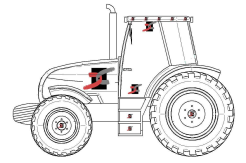


POS.	Tutti i tipi All types	Codice - Article number
1	RA 00 024	
2	RA 00 033	



MH43

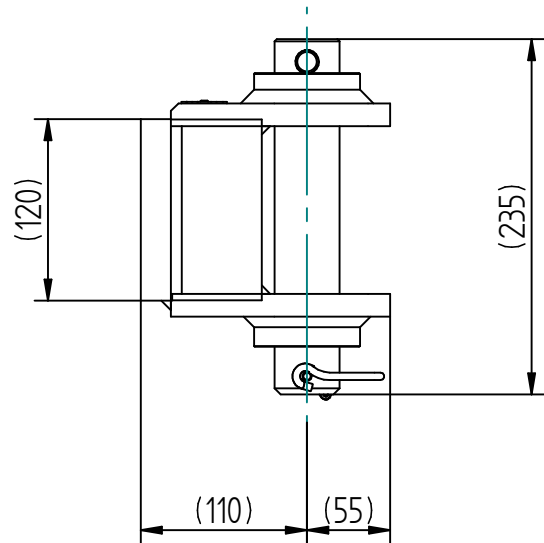
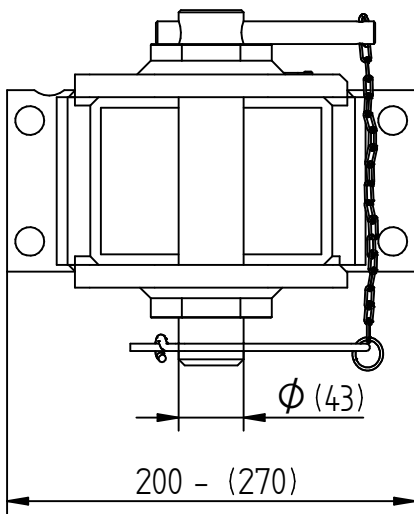
**Gancio manuale
perno cilindrico Ø43**
**Manual coupling
cylindrical pin Ø43**



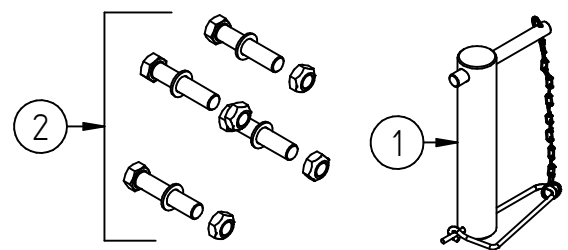
STANDARD DIMENSIONALI dimensional standards	CUNA 338.02 cat. D2 ; ISO 6489-5 shape y ; 2015/208
NON GIREVOLE non-swivel	0°
per OCCHIONI for draw-bar eyes	CUNA 438.06 cat. F2 ; ISO 5692-3 shape Y

Dati tecnici - Technical data

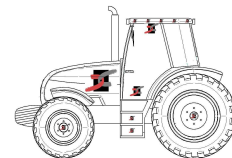
Modello Model	Codice Article number	Flangia Hole pattern mm	Viti di fissaggio Fixing screws	massa rimorchiabile trailer mass t	carico verticale static load daN	Omologazione Homologation	Peso Weight kg
MH43	MH43 011	130 X 60	M18	14	2000	e3*2015/208*2018/829NS*30072	13
	MH43 012	240 X 80	M18	20	3000	e3*2015/208*2018/829NS*10012	15,5



Ricambi - Spare parts

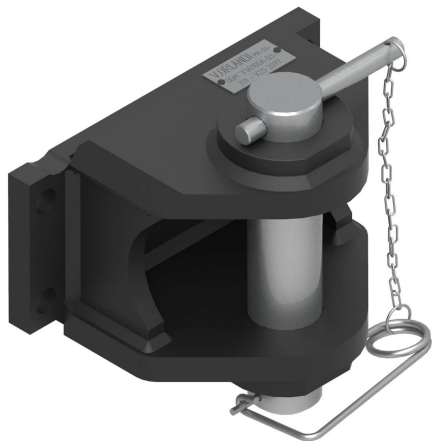



POS.	Tutti i tipi All types	Codice - Article number	
		MH43 011	MH43 012
1	RA 00 023		
2	RA 00 040		



MH50

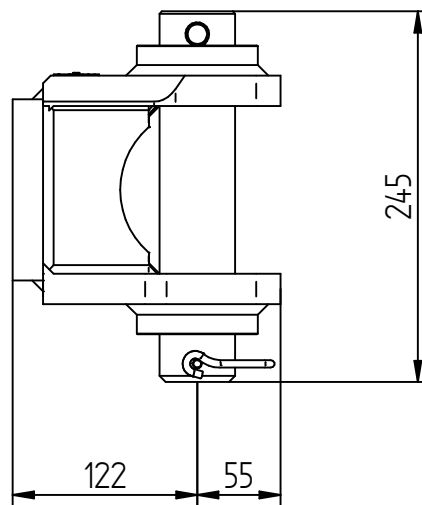
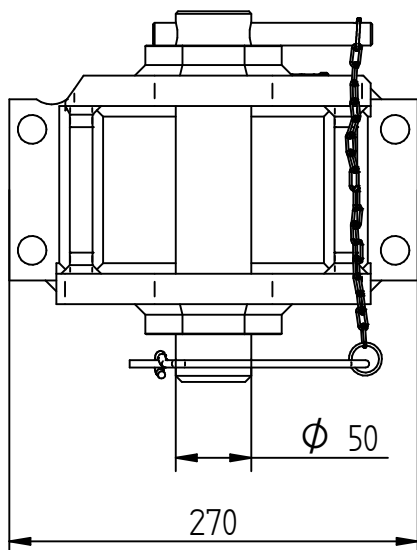
**Gancio manuale
perno cilindrico Ø50**
**Manual coupling
cylindrical pin Ø50**



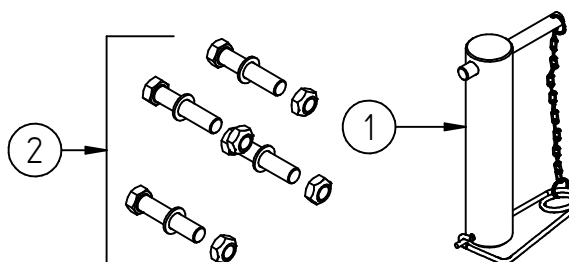
STANDARD DIMENSIONALI dimensional standards	CUNA 338.02 cat. D3 ; ISO 6489-5 shape z; 2015/208
NON GIREVOLE non-swivel	
per OCCHIONI for draw-bar eyes	CUNA 438.06 cat. F3 ; ISO 5692-3 shape Z

Dati tecnici - Technical data

Modello Model	Codice Article number	Flangia Hole pattern mm	Viti di fissaggio Fixing screws	massa rimorchiabile trailer mass t	carico verticale static load daN	Omologazione Homologation	Peso Weight kg
MH50	MH50 0 K2	240 X 80	M18	30	3000	e3*2015/208*2018/829NS*10014	19,5

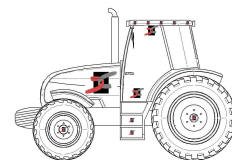


Ricambi - Spare parts



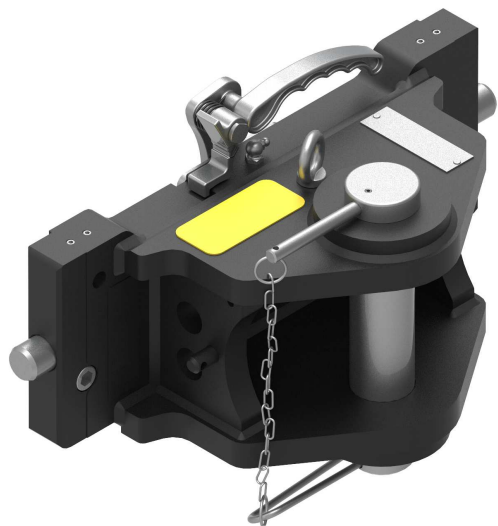
POS.	Tutti i tipi All types	Part No MH 00 0K2
1	RA 00 024	
2	RA 00 040	

MH43-6

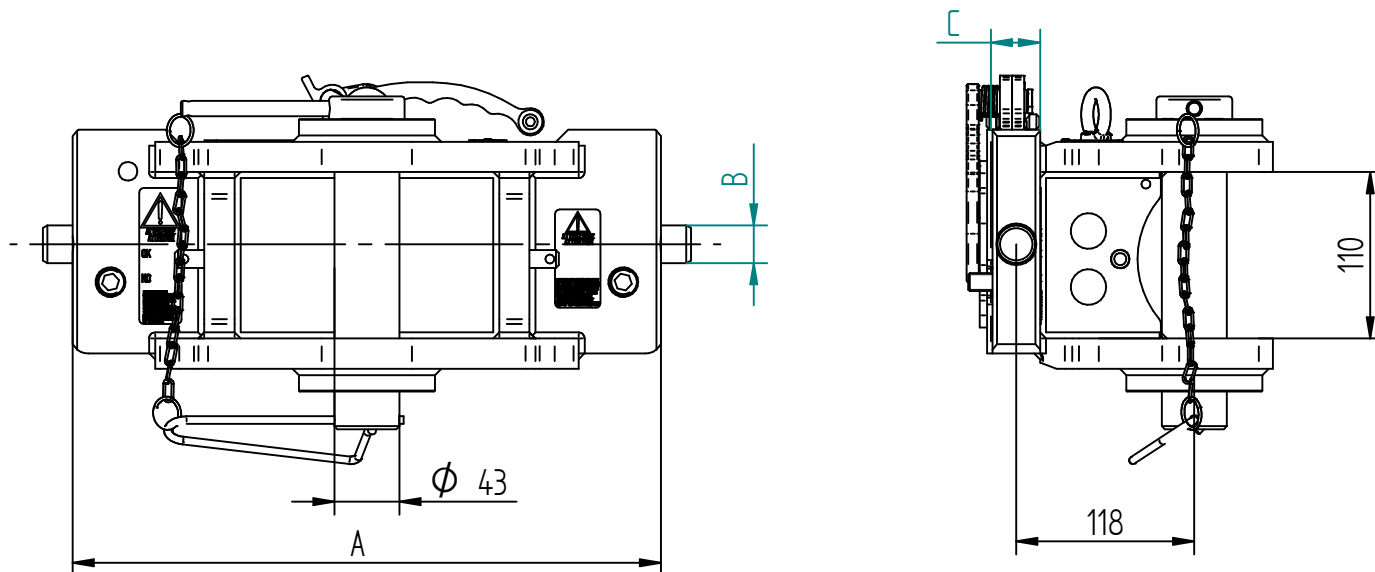


**Gancio manuale
perno cilindrico Ø43**
**Manual coupling
cylindrical pin Ø43**

STANDARD DIMENSIONALI dimensional standards	CUNA 338.02 ; ISO 6489-5 shape y ; 2015/208
NON GIREVOLE non-swivel	0°
per OCCHIONI for draw-bar eyes	CUNA 438.06 cat. F3 ; ISO 5692-3 shape Y



Dati tecnici - Technical data						
Modello Model	Codice Article number	Dimensione "A" "A" dimension mm	Valore Maximum Horizontal Load D- value	carico verticale static load daN	Omologazione Homologation	Peso Weight kg
MH43-6	MH43 E L6	390-25-35	101,2	3000	e3*2015/208*2018/829ND*10028	29
	MH43 D L6	335-22-30	101,2	3000	e3*2015/208*2018/829ND*10028	28,2
	MH43 B L6	330-25-32	101,2	3000	e3*2015/208*2018/829ND*10028	27,6
	MH43 G L6	311-22-30	101,2	3000	e3*2015/208*2018/829ND*10028	26,2

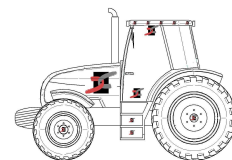


**COMPATIBILE CON
SISTEMA MARIOSCA
SUITABLE WITH
MARIOSCA SYSTEM**

Ricambi - Spare parts

POS.	Tutti i tipi All types	Codice - Article number			
		MH 43 EL6	MH 43 DL6	MH 43 BL6	MH 43 GL6
1	RA 00 384				
2		RA 00 360	RA 00 514	RA 00515	RA 00516
3		RA 00517	RA 00517	RA 00 517	RA 00518
4		RA 00 217			RA 00 217

MH50-6

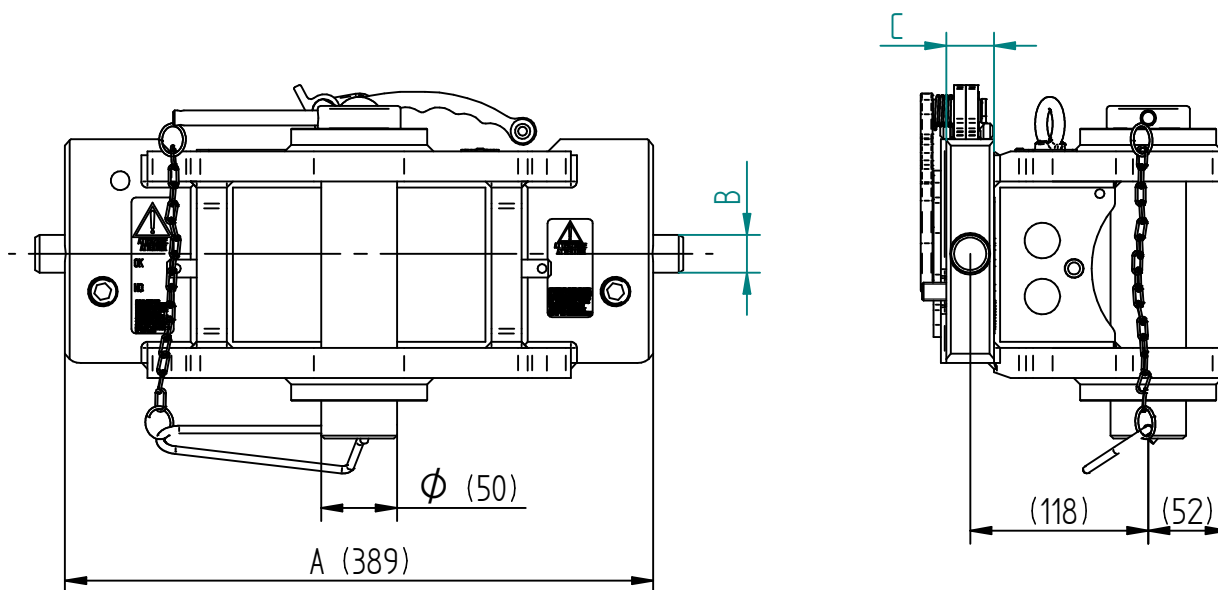


**Gancio manuale
perno cilindrico $\phi 50$
Manual coupling
cylindrical pin $\phi 50$**

STANDARD DIMENSIONALI dimensional standards	CUNA 338.02 ; ISO 6489-5 shape z; 2015/208
NON GIREVOLE non-swivel	0°
per OCCHIONI for draw-bar eyes	CUNA 438.06 cat. F3 ; ISO 5692-3 shape Z



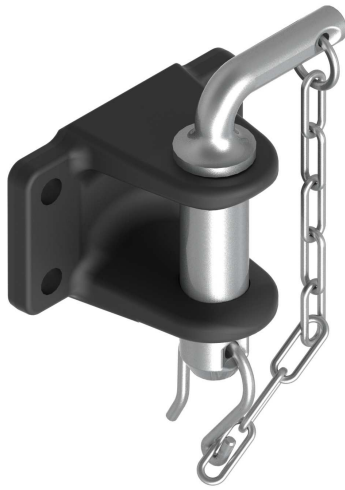
Dati tecnici - Technical data						
Modello Model	Codice Article number	Dimensione "A" "A" dimension mm	Valore Maximum Horizontal Load D- value	carico verticale static load daN	Omologazione Homologation	Peso Weight kg
MH50-6	MH50 E M6	390-25-32	101,2	3000	e3*2015/208*208/829ND*10029	30,5
	MH50 D M6	335-22-30	101,2	3000	e3*2015/208*208/829ND*10029	29,2
	MH50 B M6	330-25-32	101,2	3000	e3*2015/208*208/829ND*10029	28,5
	MH50 G M6	311-22-30	101,2	3000	e3*2015/208*208/829ND*10029	27,3



**COMPATIBILE CON
SISTEMA MARIOSCA
SUITABLE WITH
MARIOSCA SYSTEM**

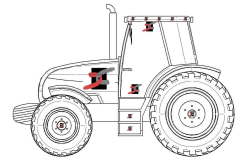
Ricambi - Spare parts


POS.	Tutti i tipi All types	Codice - Article number			
		MH 43 EL6	MH 43 DL6	MH 43 BL6	MH 43 GL6
1	RA 00 385				
2		RA 00 360	RA 00 514	RA 00515	RA 00516
3		RA 00517	RA 00517	RA 00 517	RA 00518
4		RA 00 217			RA 00 217



GM10

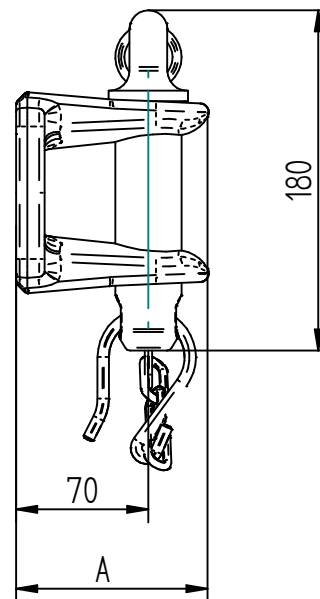
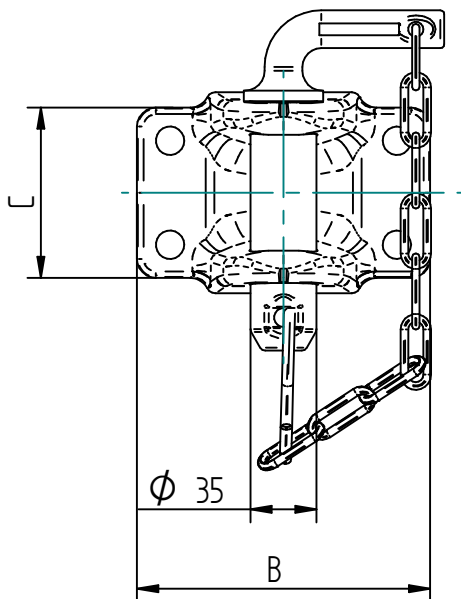
**Gancio di manovra
perno cilindrico
Manual coupling
cylindrical pin**



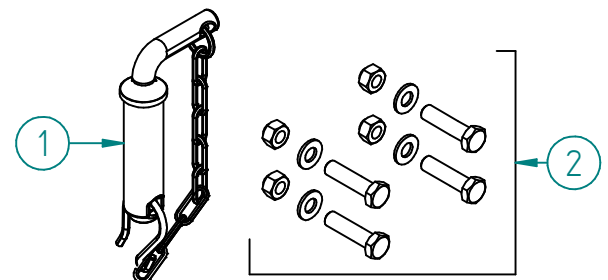
STANDARD DIMENSIONALI dimensional standards	2015/208 ANNEX XXIX
NON GIREVOLE non-swivel	
per OCCHIONI for draw-bar eyes	94/20/CE ; DIN 74054; ECE R55-01

Dati tecnici - Technical data

Modello - Model	Codice Article number	Flangia Hole pattern mm	Viti di fissaggio Fixing screws	Dimensione "A" "A" dimension mm	Dimensione "B" "B" dimension mm	Dimensione "C" "C" dimension mm	massa rimorchiabile trailer mass t	peso motrice total weight of towing vehicle t	Peso Weight kg
GM10	GM 103 00	120X55	M14	102	155	90	25	50	4,2
	GM 104 00	140X80	M16	110	180	120	35	70	6
	GM 105 00	160X100	M20	110	200	140	50	120	7



Ricambi - Spare parts

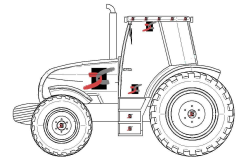



POS.	Codice - Article number		
	GM 103 00	GM 104 00	GM 105 00
1	RG 00 219	RG 00 219	RG 00 219
2	RG 00 130	RG 00 131	RG 00 132



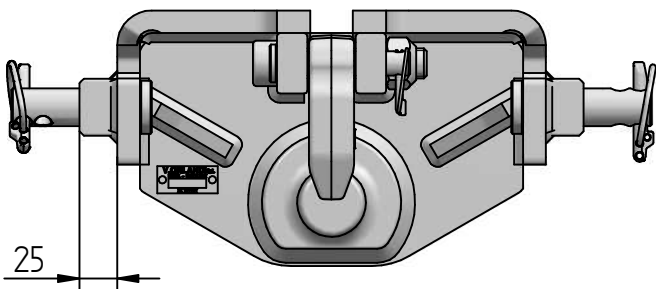
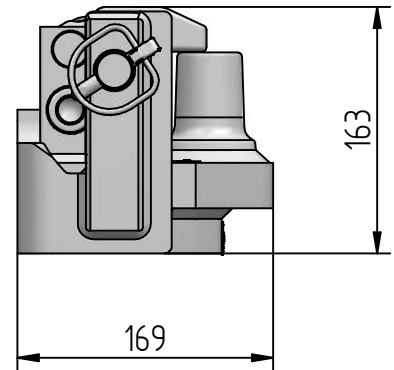
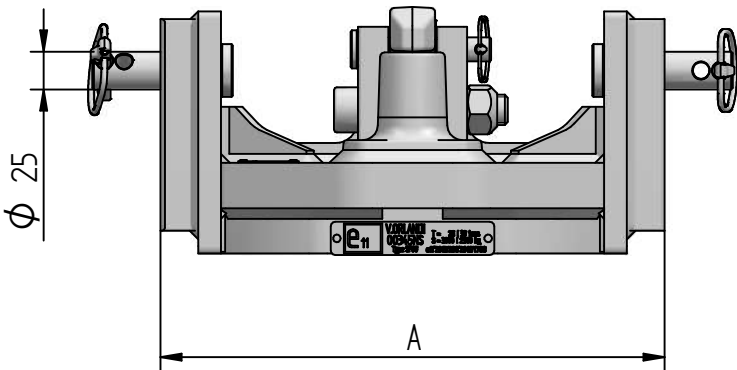
SPO0

Supporto scorrevole con piton fixe
Lift piton fixe support

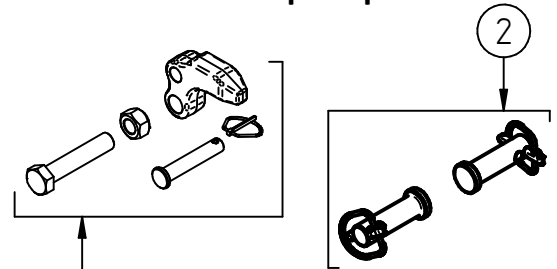


STANDARD DIMENSIONALI dimensional standards	ISO 6489-4 ; 2013/8/CEE; 2015/208
NON GIREVOLE non-swivel	
per OCCHIONI for draw-bar eyes	Ø50 ISO 5692-1 ; ISO20019

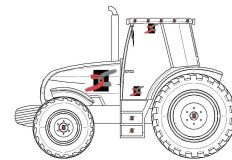
Dati tecnici - Technical data						
Modello - Model	Codice Article number	Dimensione "A" "A" dimension mm	Carico Verticale Static Load daN	Peso rimorchiabile Total trailer weight t	Omologazione Homologation	Peso Weight kg
SPO0	SP 00 101	333-25-38	3000	20	e3*2015/208*2018/829NS*30100	20
			2500	30		
	SP 00 201	320-25-38	3000	20	e3*2015/208*2018/829NS*30100	20
			2500	30		
	SP 00 301	310-25-38	3000	20	e3*2015/208*2018/829NS*30100	20
			2500	30		



Ricambi - Spare parts




POS.	Tutti i tipi All types
1	RA 00 065
2	RA 00 271



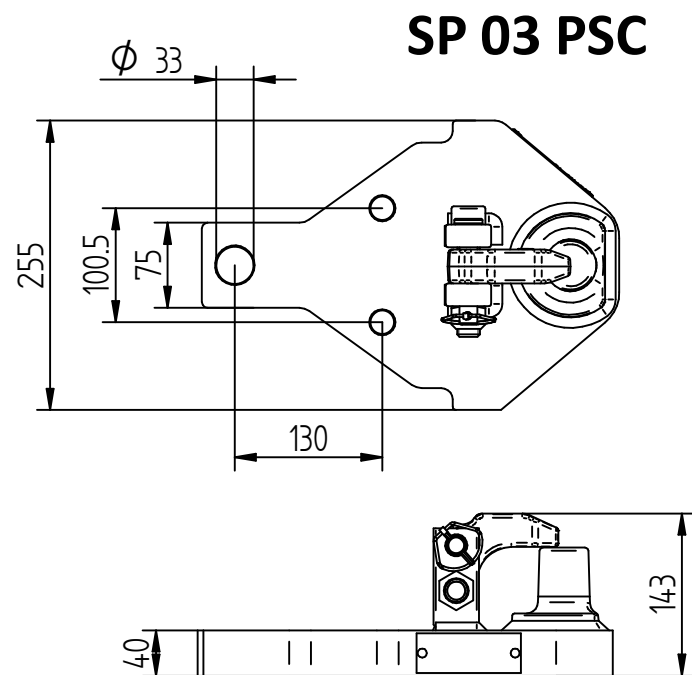
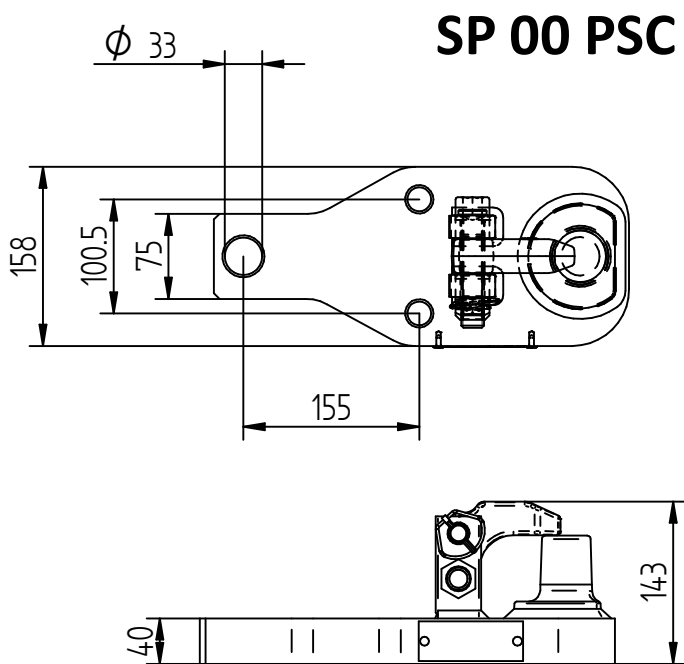
SP45

Supporto con piton fixe
Piton fixe support



STANDARD DIMENSIONALI dimensional standards	ISO 6489-4 ; 2013/8/CEE; 2015/208
NON GIREVOLE non-swivel	 0°
per OCCHIONI for draw-bar eyes	Ø50 ISO 5692-1 ; ISO20019

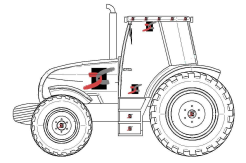
Dati tecnici - Technical data						
Modello - Model	Codice Article number	Flangia Hole pattern mm	Valore D D-Value kN	Massa S S-Load kg	Omologazione Homologation	Peso Weight kg
SP45	SP 00 PSC	-	70	2500	e3*2015/208*2018/829ND*30088	17,5
	SP 03 PSC	-	70	2500	e3*2015/208*2018/829ND*30088	22




Ricambi - Spare parts

POS.	Tutti i tipi All types
1	RA 00 065

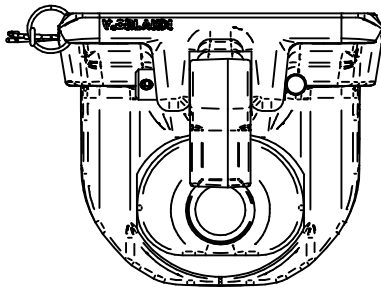
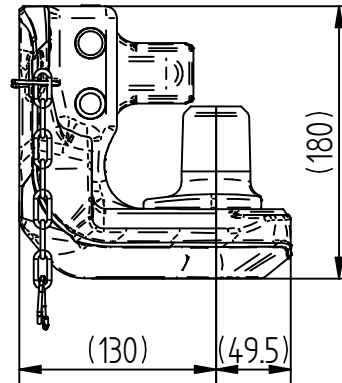
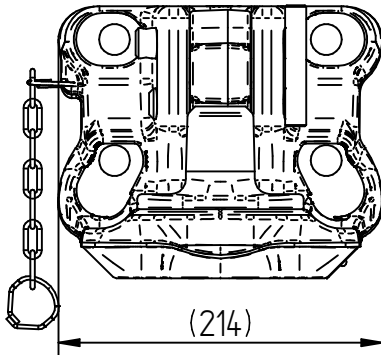
GP45



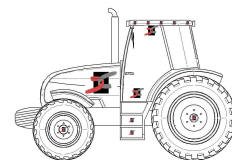
Gancio flangiabile con piton fixe
Flanged trailer coupling clevis type with piton fixe

STANDARD DIMENSIONALI dimensional standards	ISO 6489-4 ; 2013/8/CEE;2015/208
NON GIREVOLE non-swivel	
per OCCHIONI for draw-bar eyes	Ø50 ISO 5692-1 ; ISO20019

Dati tecnici - Technical data							
Modello - Model	Codice Article number	Flangia Hole pattern mm	Viti di fissaggio Fixing screws	Valore D D-Value kN	Massa S S-Load kg	Omologazione Homologation	Peso Weight kg
GP45	GP 45 004	140X80	M16	89,3	2000	e1*2015/208*2018/829ND*00333	15
	GP 45 00C	140X80	M20	89,3	3000	e1*2015/208*2018/829ND*00333	15




GS80



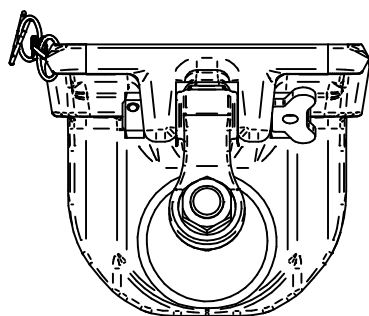
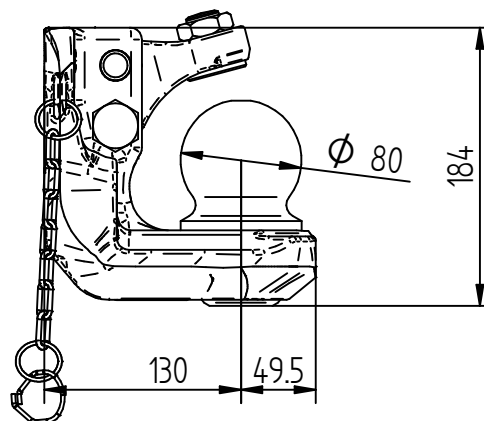
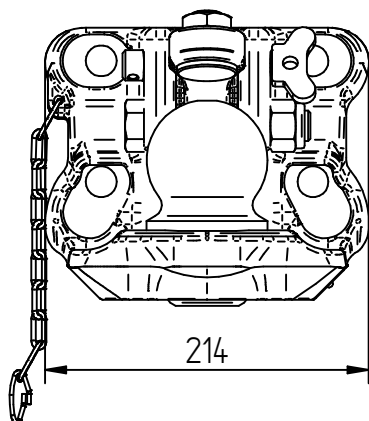
Gancio a sfera flangiabile
Flanged Sphere trailer coupling
clevis type



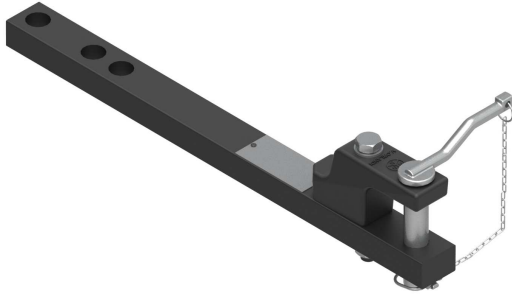
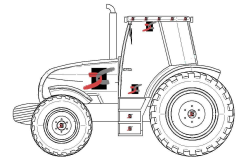
STANDARD DIMENSIONALI dimensional standards	ISO 6489-4 ; 2013/8/CEE;2015/208
NON GIREVOLE non-swivel	 0°
per OCCHIONI for draw-bar eyes	Ø80 ISO 24347

Dati tecnici - Technical data


Modello - Model	Codice Article number	Flangia Hole pattern mm	Viti di fissaggio Fixing screws	Valore D D-Value kN	Massa S S-Load kg	Omologazione Homologation	Peso Weight kg
GS80	GS 81 004	140X80	M16	83,9	2000	e1*2015/208*2018/829ND*00190	18
	GS 80 004	140X80	M20	83,9	3000		18
				97,1	2500		18



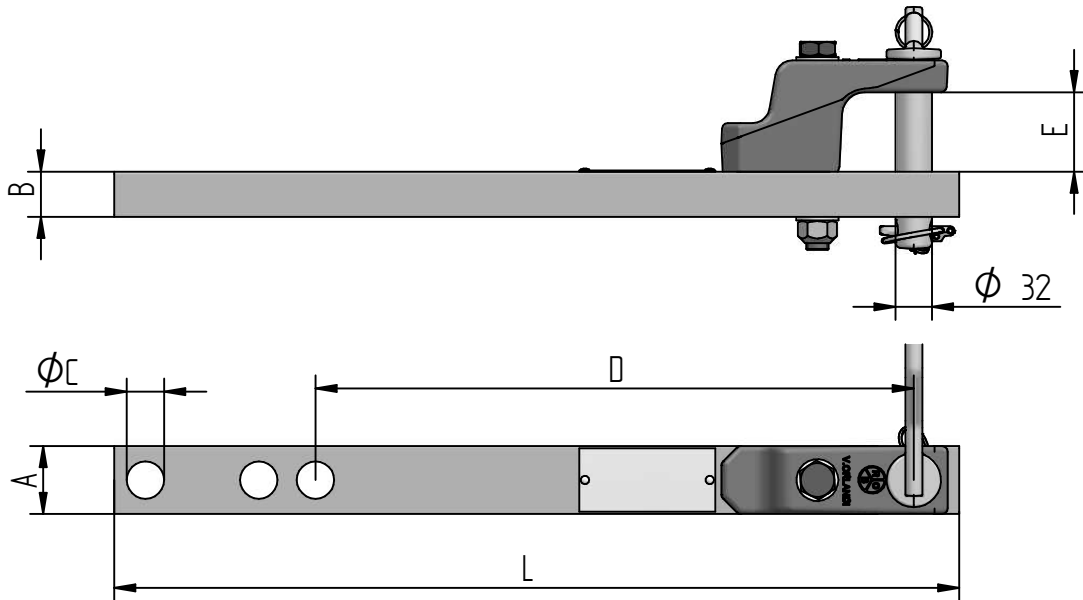
BT



Barra di traino CEE
perno cilindrico Ø 32 mm
CEE drawbar
cylindrical pin Ø 32 mm

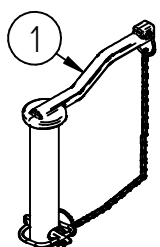
STANDARD DIMENSIONALI dimensional standards	ISO 6489-2 ; 2009/144/CEE; 2015/208
GIREVOLE swivel	 0°
per OCCHIONI for draw-bar eyes	Ø 40/50 ISO 5692-2 ; ISO 8755 ; DIN 11026 ; DIN 11043 ; DIN 74054

Dati tecnici - Technical data				
Modello - Model	Codice Article number	massa rimorchiabile trailer mass t	carico verticale static load daN	Omologazione Homologation
BT	BT 11 SDE	6	500	e3*2015/208*2018/829NS*10008
	KY 50 SDB	6	500	e3*2015/208*2018/829NS*30071
	KB 27 SDE	12	800	e3*2015/208*2018/892*30090NS
	KB 28 SDF	13,5	1815	e11*1569 (EG30)
	KB 00 SDP	32	2000	e3*2015/208*2018/829NS*30089
	BT 13 SDE	32	2000	e5*2015/208*2018/829NS*01006
	SL 52 SDA	32	2000	e11*2124 (SL03DB)



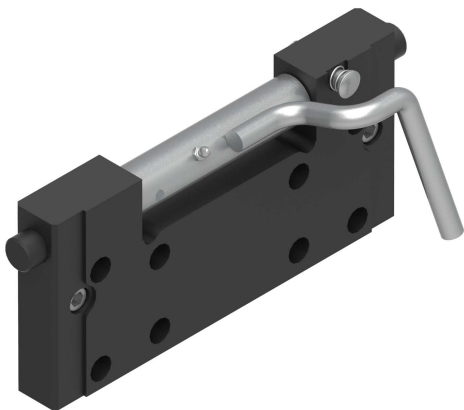
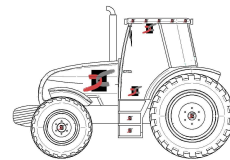
DATI DIMENSIONALI - DIMENSIONAL DATA						
codice - code	A (mm)	B (mm)	L (mm)	ØC (mm)	D (mm)	E (mm)
BT 11 SDE	50	22	520	21	266	70
KY 50 SDB	50	25	700	21	215	70
KB 27 SDE	60	40	745	33	528	70
KB 28 SDF	70	40	1206	30,5	963	80
KB 00 SDP	80	40	546	33	470	65
BT 13 SDE	80	40	735	33	660	65
SL 52 SDA	80	40	1145	39	504	65

Ricambi - Spare parts



POS.	Tutti i tipi All types
1	RA 00 214

LB 40



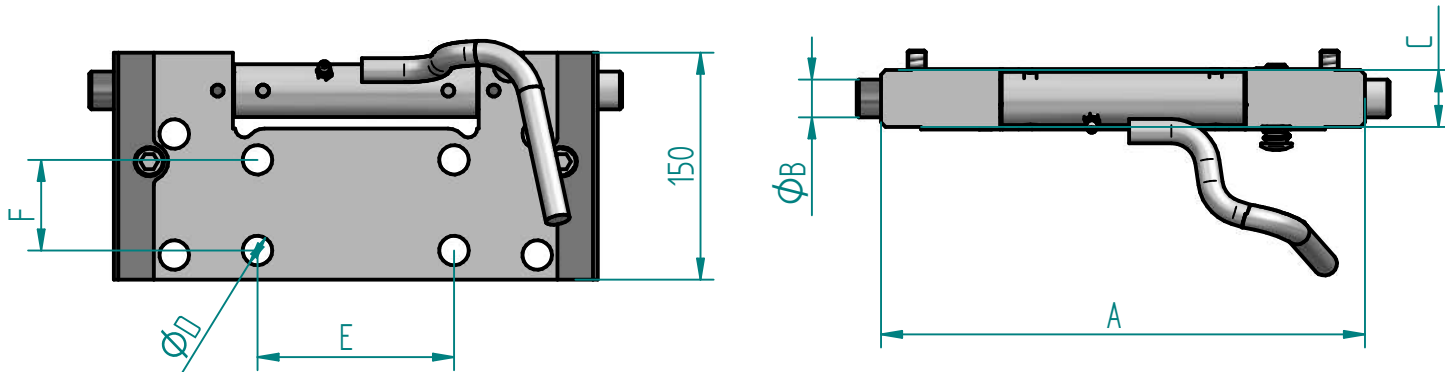
slitta scorrevole flangiata

Flanged lift bearing

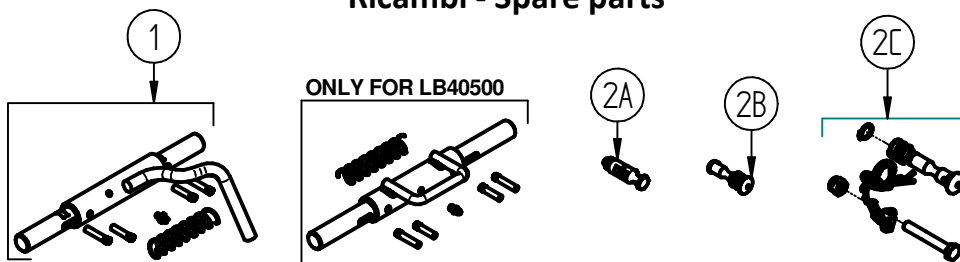
Hole Pattern **130x60 + 240x80**

STANDARD DIMENSIONALI dimensional standards	
GIREVOLE swivel	0°

Dati tecnici - Technical data					
Modello - Model	Codice Article number	Dimensione "A" "A x B x C" dimension mm	Flangia Hole pattern mm "E x F"	Viti di fissaggio Fixing screws "D"	Peso Weight kg
LB 40	LB 40 500	260-25-38	130 X 60 and 240 X 80	M18	10,3
	LB 40 300	310-25-38		M18	12,8
	LB 40 200	320-25-38		M18	13,2
	LB 40 100	333-28-38		M18	13,5

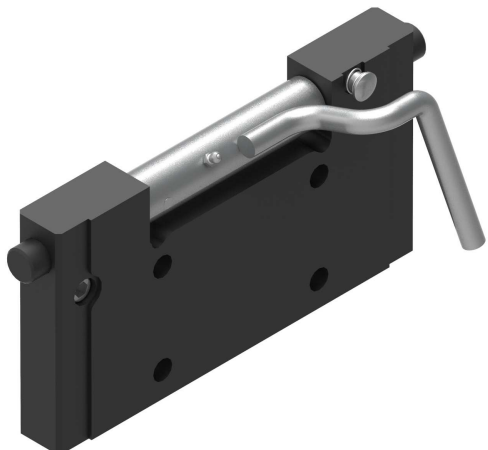
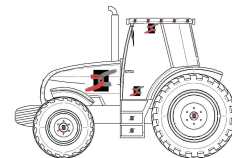


Ricambi - Spare parts



POS.	Tutti i tipi All types	Codice - Article number			
		LB 40 100	LB 40 200	LB 40 300	LB 40 500
1		RA 00 041	RA 00 042	RA 00 043	RA 00 045
2A	RA 00 002 (UP TO 2016)				
2B	RA 00 270 (UP TO 2018)				
2C		RA 00 471	RA 00 471	RA 00 471	RA 00 505

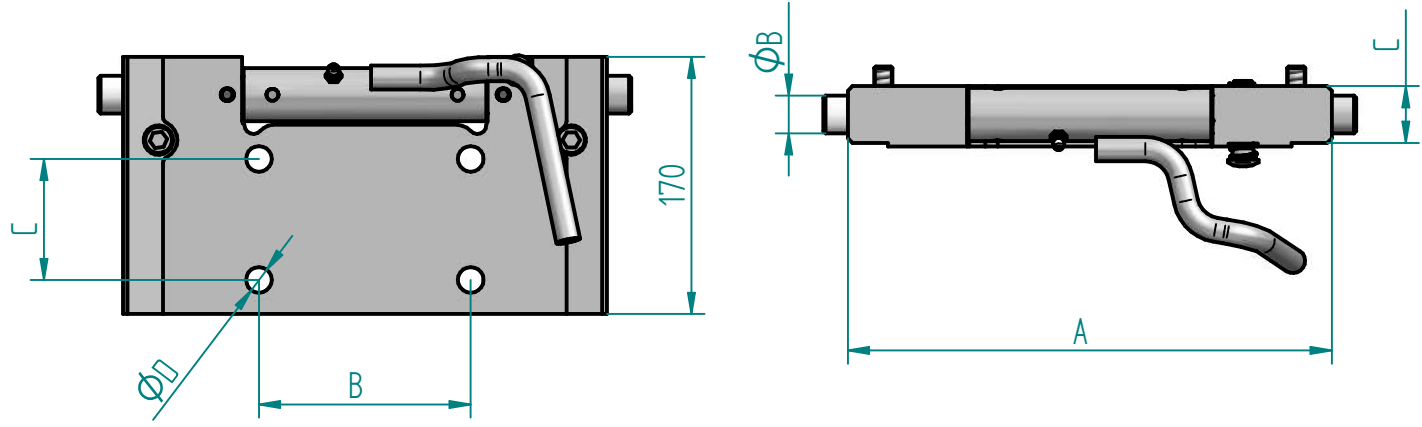
LB 41



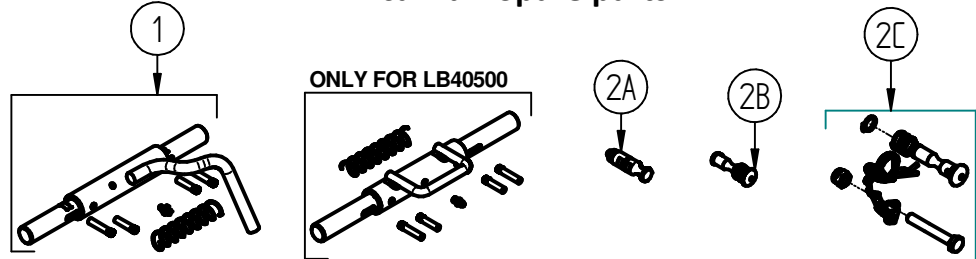
slitta scorrevole flangiata
 Flanged lift bearing
 Hole Pattern 140x80 (M16)

STANDARD DIMENSIONALI dimensional standards	
GIREVOLE swivel	

Dati tecnici - Technical data					
Modello - Modell	Codice Article number	Dimensione "A x B x C" mm	Flangia Hole pattern "E x F" mm	Viti di fissaggio Fixing screws "D"	Peso Weight kg
LB 41	LB 41 500	260-25-38	140 X 80	M16	11
	LB 41 300	310-25-38	140 X 80	M16	13,8
	LB 41 200	320-25-38	140 X 80	M16	14,3
	LB 41 100	333-25-38	140 X 80	M16	15



Ricambi - Spare parts

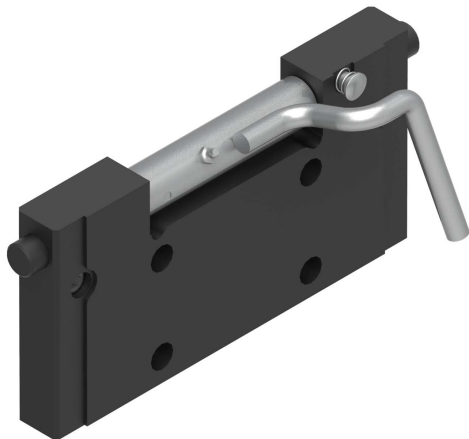



POS.	Tutti i tipi All types	Codice - Article number			
		LB 40 100	LB 40 200	LB 40 300	LB 40 500
1		RA 00 041	RA 00 042	RA 00 043	RA 00 045
2A	RA 00 002 (UP TO 2016)				
2B	RA 00 270 (UP TO 2018)				
2C		RA 00 471	RA 00 471	RA 00 471	RA 00 505

LB 42

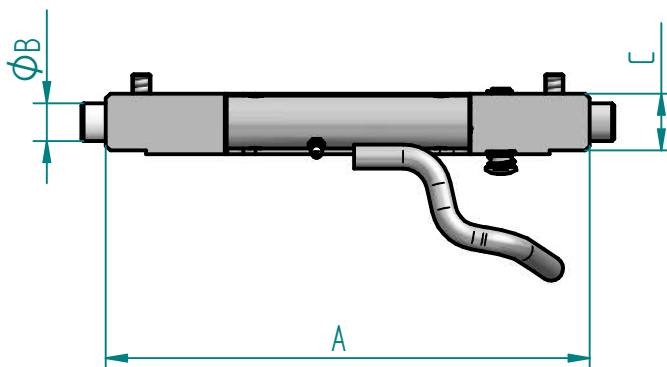
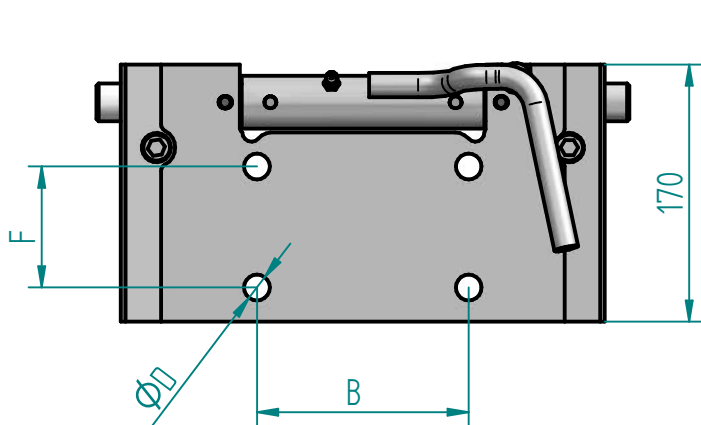
slitta scorrevole flangiata
Flanged lift bearing

Hole Pattern 140x80 (M20)

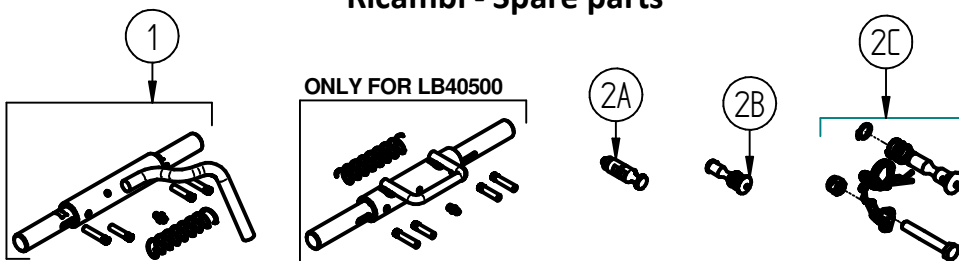


STANDARD DIMENSIONALI dimensional standards	
GIREVOLE swivel	

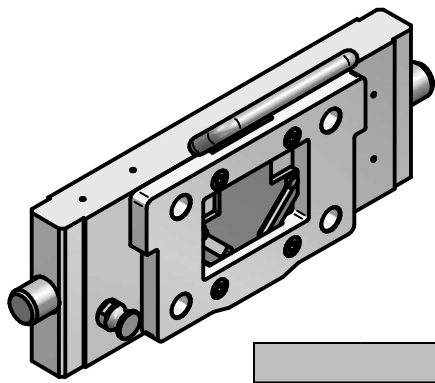
Dati tecnici - Technical data					
Modello - Modell	Codice Article number	Larghezza Width "A x B x C" [mm]	Flangia Hole pattern "E x F" [mm]	Viti di fissaggio Fixing screws "D"	Peso Weight kg
LB 42	LB 42 300	310-25-38	140 X 80	M20	13,9
	LB 42 200	320-25-38	140 X 80	M20	14,4
	LB 42 100	333-25-38	140 X 80	M20	15,1



Ricambi - Spare parts



POS.	Tutti i tipi All types	Codice - Article number			
		LB 40 100	LB 40 200	LB 40 300	LB 40 500
1		RA 00 041	RA 00 042	RA 00 043	RA 00 045
2A	RA 00 002 (UP TO 2016)				
2B	RA 00 270 (UP TO 2018)				
2C		RA 00 471	RA 00 471	RA 00 471	RA 00 505

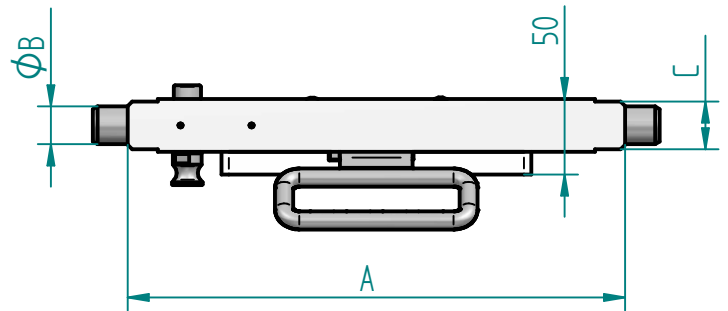
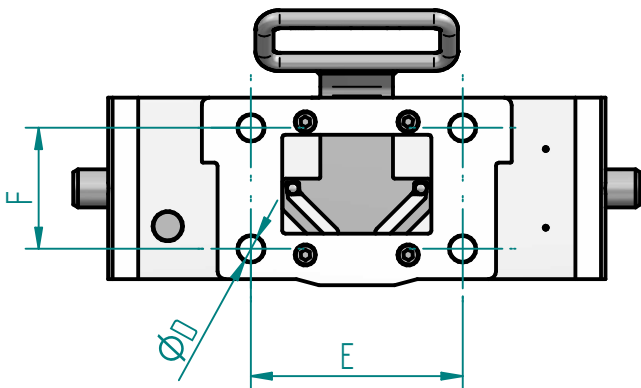


LB 32

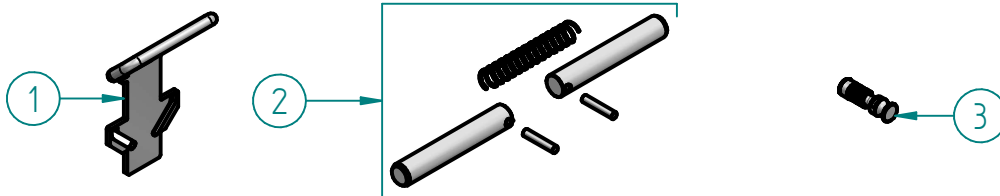
slitta scorrevole flangiata
Flanged lift bearing

Hole pattern 140x80 (M16 or M20)

Dati tecnici - Technical data				
Tipo Type	Codice Article number	Dimensione "A x B x C" mm	Foratura Hole pattern "E x F" mm	Viti di fissaggio Fixing Screw "D"
LB 32	LB 32 F04	241-22-30	140 X 80	M16
	LB 32 G04	311-22-30	140 X 80	M16
	LB 3B G04	311-22-30	140 X 80	M20
	LB 32 B04	330-25-32	140 X 80	M16
	LB 3B B04	330-25-32	140 X 80	M20
	LB 3C D00	335-22-30	140 X 80 / 240 x 80	M20/M18
	LB 00 E04	390-25-32	140 X 80 / 240 x 80	M16/M18
	LB 0B E04	390-25-32	140 X 80 / 240 x 80	M20/M18



Ricambi - Spare parts



POS.	Tutti i tipi All types	Codice - Article number						
		LB 32 B04	LB 32 G04	LB 32 F04	LB 3B B04	LB 3B G04	LB 3C D00	LB00/LB0B
1	RA 00 135							
2	RA 00 232	RA 00 232	RA 00 234	RA 00 233	RA 00 232	RA 00 324	RA 00 268	RA 00360
3	RA 00 217							

Technical parameters of towing systems

D-value: Theoretical load for the determination of the theoretical horizontal dynamic force between towing vehicle and steering axle trailer;

Dc-value: Theoretical load for the determination of the theoretical horizontal dynamic force between towing vehicle and central axle trailer;

V-value: Theoretical load for the determination of the theoretical vertical dynamic force between towing vehicle and central axle trailer of more than 3,5 tons weight;

S-value: Static vertical load transmitted to the coupling by central axle trailer in static conditions;

U-value: Vertical load transmitted to the fifth wheel by the semitrailer.

1 - Trailer couplings and drawbar eyes

1.1 - Steering axle trailers

Fig. 1



In this case the technical parameter is following:

$$D = g \times \frac{T \times R}{T + R}$$

where:

g = Gravitational acceleration; 9.81 m/s²;

T = Technically admissible maximum weight of towing vehicle in tons;

R = Technically admissible maximum weight of trailer in tons.

Examples of calculation

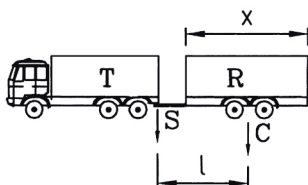
a) **T** = 18 ton; **R** = 26 ton $D = \frac{9.81 \times (18 \times 26)}{18 + 26} = 104.3 \text{ kN}$

b) **T** = 14 ton; **R** = 42 ton $D = \frac{9.81 \times (14 \times 42)}{14 + 42} = 103.1 \text{ kN}$

c) **T** = 30 ton; **R** = 50 ton $D = \frac{9.81 \times (30 \times 50)}{30 + 50} = 183.9 \text{ kN}$

1.2 - Central axle trailers

Fig. 2



In this case the technical parameter is following:

$$Dc = g \times \frac{T \times C}{T + C}$$

where:

T = Technically admissible maximum load of the towing vehicle in tons, including the static vertical load transmitted to the coupling by the drawbar eye;

C = Sum of the maximum axle loads transmitted to the ground by the trailer in tons.

$$V = a \times \frac{x^2}{l} \times C$$

where:

x = Length of the loading area in meters;

l = distance between the center of the hole of the drawbar eye and the center of the axles of the trailer in meters;

V = Dynamic vertical load in kN;

C = Sum of the maximum axial loads transmitted to the ground by the trailer in tons;

a = $1,8 \frac{m}{s^2}$ for vehicles with air suspensions or with a comparable suspension type;

a = $2,4 \frac{m}{s^2}$ for vehicle with other types of suspensions.

$$S = R - C$$

R = Technically admissible maximum weight of the trailer in tons.

Example of calculation

Towing vehicle with 20 tons weight and with air suspensions. Central axle trailer with:

R = 20 ton **C** = 19 ton **S** = 1 ton **X** = 7.2 m **L** = 6 m

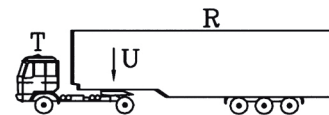
For the determination of the Dc-value the weight of the towing vehicle is calculated as follows:

T = 20 + **S** = 20 + 1 = 21 ton

and therefore

$$Dc = \frac{9.81 \times (21 \times 19)}{21 + 19} = 98 \text{ kN} \quad V = 1.8 \times \left(\frac{7.2}{6}\right)^2 \times 19 = 49.2 \text{ kN}$$

2 - Fifth wheels and kingpins



$$D = g \times \frac{0,6 \times T \times R}{T + R - U}$$

where:

T = Weight of the towing vehicle including the vertical load on the fifth wheel;

R = Weight of the semitrailer;

U = That part of the semitrailer weight which is directly transmitted to the fifth wheel.

Example of calculation

Towing vehicle alone, weight 7 tons

Trailer with **R** = 36 tons and **U** = 14 tons

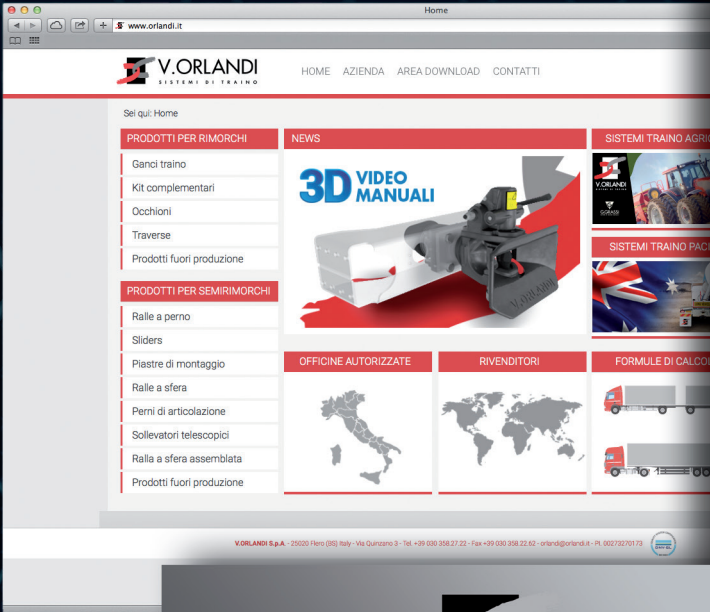
For the determination of the D-value the weight of the towing vehicle is calculated as follows:

T = 7 + **U** = 7 + 14 = 21 ton and therefore

$$D = g \times \frac{0,6 \times 21 \times 36}{21 + 36 - 14} = 101 \text{ kN}$$

The towing systems homologated according to the directive 94/20/EC have to bear in the homologation plate the characteristic values (**D**, **Dc**, **S**, **V** and **U**) according to which they have been approved.

www.orlandi.it



V.ORLANDI
TOWING SYSTEMS