

Series introduction of brake pad quality SAF 577 in trailer disc brake SBS 2220 H01



As a follow-up to our WI109 Rev. B of 07.04.2021, we would like to inform you that from **February 2023** brakes will be installed which are equipped with the new lining.

Please note this in your **system and vehicle approvals**.

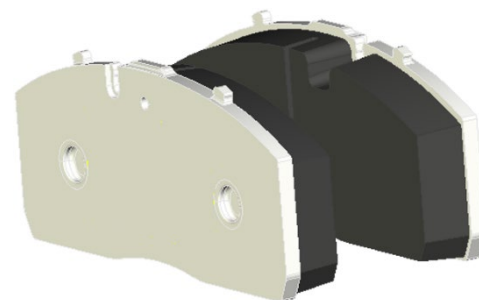
This is the WI 109 Rev. B dated 07.04.2021:

Some customers have asked us to postpone the launch date due to the adjustment of their system and vehicle approvals. In order to meet these requests and to make the changeover of the SAF 577 brake pad grade as customer-friendly as possible, we have decided to postpone the date accordingly. We kindly ask you to update your documents accordingly until the 4th quarter of 2022.

In the course of continuous product development and optimization, SAF-HOLLAND will introduce the new SAF 577 brake pad quality in the SBS 2220 H01 disc brake.

The following axle types are affected:

B9-22S, BL9-22S, BLL9-22S, BI9-22S, BIL9-22S, BILL9-22S, BIZL9-22S, BIM9-22S, BI10-22S, SI9-22S, ZI9-22S



Properties of the new brake pad quality

- High friction value stability over the entire service life
- High friction value stability in relation to temperature, speed and pressure
- Balanced wear behavior

Important note: Adjustments to existing system and vehicle approvals will be necessary

For the amendment of existing system and vehicle approvals, we provide the test protocol TDB0843 in a modified version. With the update of the test protocol TDB0843, test code B (20130312) was marked as inactive and test code C (20200731) was added to document the lining quality SAF 577. Based on the data provided, the required brake calculations can be made.

The current test protocol TDB 0843 can be found on the SAF-HOLLAND website in the Sales / Expert Opinions section (<http://www.safholland.org/testreports/>).

Please ensure that your system and vehicle permits are adjusted accordingly by Q4 2022.