

Installation Procedure

SAF-HOLLAND® Dust Shield Support Bracket Installation

Introduction

These instructions provide the information necessary to properly install the dust shield support brackets.

We recommend only the use of SAF-HOLLAND Original Parts.

NOTE: A list of SAF-HOLLAND technical support locations that supply SAF-HOLLAND Original Parts can be found at www.safholland.us or contact our customer service group at 888-396-6501.

Notes, Cautions, and Warnings

IMPORTANT: You must read and understand all of the procedures presented in these instructions before starting dust shield bracket installation.

WARNING Failure to follow all the replacement instructions contained in this document could cause a hazardous condition to develop which, if not avoided, could result in death or serious injury.

Proper tools must be used to perform the replacement procedures described in these instructions.

NOTE: In the United States, workshop safety requirements are defined by federal and/or state Occupational Safety and Health Act. Equivalent laws may exist in other countries. These instructions are written based on the assumption that OSHA or other applicable employee safety regulations are followed by the location where work is performed.

Throughout these instructions, you will notice the terms "NOTE", "IMPORTANT", "CAUTION", and "WARNING", followed by useful product information. So that you may better understand these instructions, those terms are as follows:

NOTE: Includes additional information to enable accurate and easy performance of procedures.

IMPORTANT: Includes additional information that if not followed could lead to hindered product performance.

CAUTION

Used without the safety alert symbol, indicates a potentially hazardous situation which, if not avoided, could result in property damage.

CAUTION

Indicates a potentially hazardous situation which, if not avoided, could result in minor or moderate injury.

WARNING

Indicates a potentially hazardous situation which, if not avoided, could result in death or serious injury.

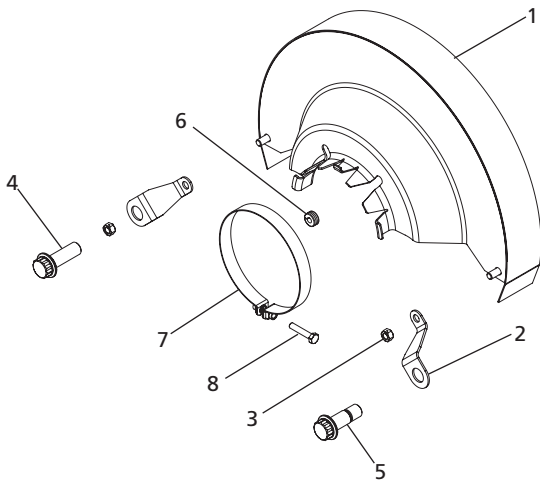
General Safety Instructions

Read and observe all Warning and Caution hazard alert messages in this publication. They provide information that can help prevent serious personal injury, damage to components, or both.

WARNING

Failure to properly support the vehicle and axles prior to commencing work could create a crush hazard which, if not avoided, could result in death or serious injury.

Installation Components (Figure 1)



Item	Description	Qty.
1	DUST SHIELD w/LIP & STUDS	1
2	SUPPORT, DUST SHIELD BRACKET	2
3	NUT, NYLOC – 3/8" x 16	2
4	BOLT, 12PT FLANGE HD, M18 x 1.5 x 55 mm, GR 10.9	1
5	SHOULDER BOLT, 12PT FLANGE HD, M18 x 1.5 x 55 m	1
6	GROMMET	1
7	BAND CLAMP	1
8	BAND CLAMP BOLT	1

Installation

IMPORTANT: The trailer must be unloaded before beginning service procedures.

WARNING Failure to properly support the suspension during maintenance could create a crush hazard which, if not avoided, could result in death or serious injury.

1. Exhaust all air from the suspension, set parking brakes, and chock the wheels.

WARNING Failure to exhaust the suspension air and chock the tires prior to beginning maintenance could allow vehicle movement which, if not avoided, could result in death or serious injury.

2. If axle is equipped with an existing dust shield, remove the band clamp and dust shield from the axle (**Figure 2**). If the axle is not equipped with a dust shield, continue to step 3.
3. Remove the outer caliper bolts from the brake caliper and discard. (Note: brake caliper not shown.) (**Figure 3**)

Figure 2

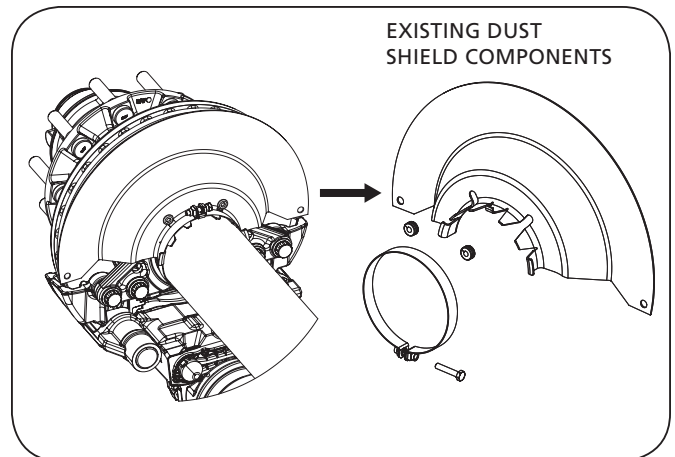
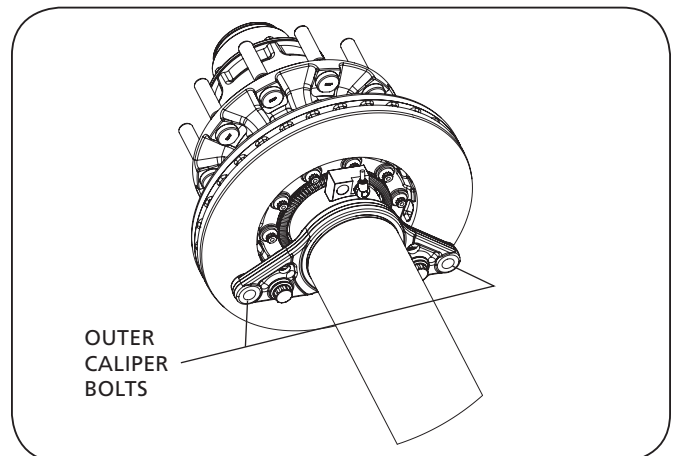


Figure 3



4. Fit the dust shield with Lip and Studs to axle and install dust shield brackets (2) using provided nyloc nuts (2) and new caliper bolts. Ensure item 5 – Shoulder Bolt is mounted in the outer mounting hole on the side of the caliper where the disc rotates out of the caliper when rotating in the driving direction. Finger tighten nyloc nuts and caliper bolts (**Figures 1, 4, 5**).

CAUTION Failure to install the shoulder bolt in the proper location could Result in premature brake pad wear.

5. Install the band clamp around dust shield and axle, then insert the band clamp bolt (**Figure 6**).
6. Torque nyloc nuts to 30 ft.lb [41 Nm]. Torque caliper bolts to 330 ft.lb [447 Nm]. Torque band clamp bolt to 20-25 ft.lb [27-34 Nm].

IMPORTANT: After replacing the dust shield, verify that the brake system is functioning properly.

WARNING Failure to verify brake system function after maintenance could result in brake malfunction which, if not avoided, could result in death or serious injury.

Figure 4

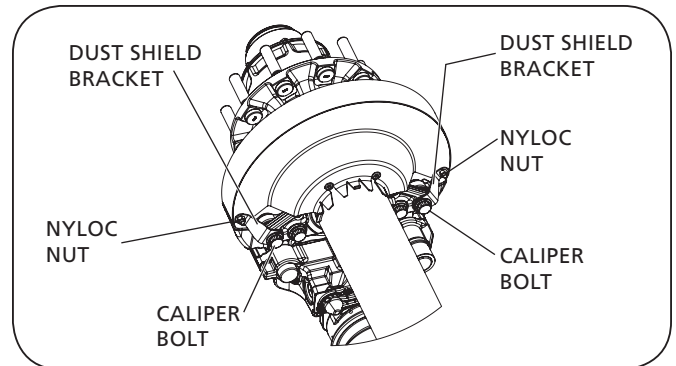


Figure 5

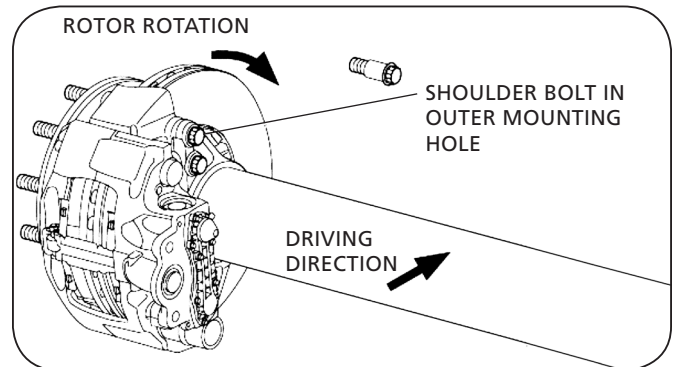


Figure 6

