

FW33 LOW-LUBE SERIES

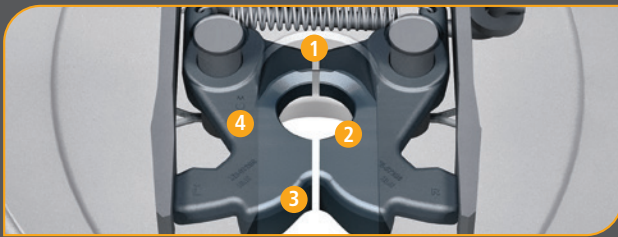
REDUCED MAINTENANCE LOW-LUBE FIFTH WHEEL
SPECIALLY FOR VOCATIONAL APPLICATIONS

HOLLAND FW33 LOWLUBE SERIES

THE HOLLAND FW33 FIFTH WHEEL IS DESIGNED SPECIFICALLY FOR VOCATIONAL APPLICATIONS.

It combines the proven reliability of the FW35 top plate with the HOLLAND LOWLUBE technology. The FW33 Series eliminates the use of grease on the top plate surface and between the top plate and bracket reducing lubrication cost and time, extending maintenance intervals, and improving driver productivity.

LowLube technology provides a smoother, more fluid ride and a constant feel for the way the trailer pulls while reducing maintenance – saving time and money.



SUPERIOR TwinLock™ DESIGN.

- 1 High Coupling Protection. Lock system protects against coupling at an improper height.
- 2 Much greater Kingpin-to-Lock Contact Area, over competitive models, for longer kingpin and lock life.
- 3 Forged/Cast Steel Locks. Rear lock is forged, hardened, and machined steel. Front lock is machined and hardened wear-resistant alloy.
- 4 Precision machining of lock mechanism/kingpin interface.

Design enhanced casting provides increased durability and a weight conscious choice for on-highway fleets.



6 Years
600,000 Miles

In the unlikely case of wear requiring lock mechanism replacement, SAF-HOLLAND will cover the cost of parts, labor and freight*

*Refer to warranty XL-FW10039WC for full details.

CAPACITY

55,000 lbs. (25,000 kg)
Maximum Vertical Load
150,000 lbs. (68,000 kg)
Maximum Drawbar Pull



E-Z GRIP™ DROP RELEASE HANDLE

protects from damage during a missed couple. Available in left or right-hand, and air release.

OPTIONAL
Holland **ELite™**
ELECTRONIC LOCK INDICATOR

(Electronic Lock Indicator – technology enhanced) is designed for fleets looking to enhance driver coupling efficiency and safety.





VISIBLE LOCK INDICATOR

provides the driver with a clear visual indication – the shaft fully retracts when lock mechanism is properly closed around the kingpin.

EASY LOCK ADJUSTMENT

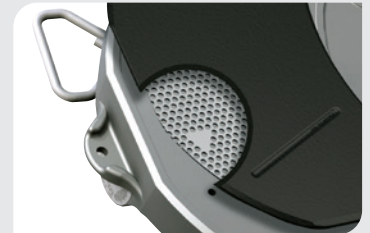
with infinite adjustment positions improves lock and kingpin durability.

DURABLE CAST STEEL

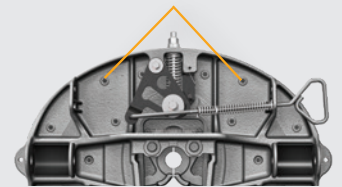
top plate with machined kingpin contact surface provides durability and eliminates the need for a replacement insert/wear ring.

HEAVY-DUTY LUBE PLATE INSERTS

The patented, grease-free design is molded to honeycomb pattern steel plates resistant to peeling, warping, or other damage, for unmatched durability and reliability.



Easy access lube plate fasteners



OPEN POSITION

CLOSED POSITION

HOLLAND

TwinLock™ DESIGN

HOLLAND exclusive twin locks are built as one single piece of forged, machined, hardened steel then cut in half to create symmetrical locks that completely encompass the kingpin for enhanced assurance and reliability.

CAST STEEL TOP PLATE

with optimized casting process for maximum strength to weight ratio.

NoLube™

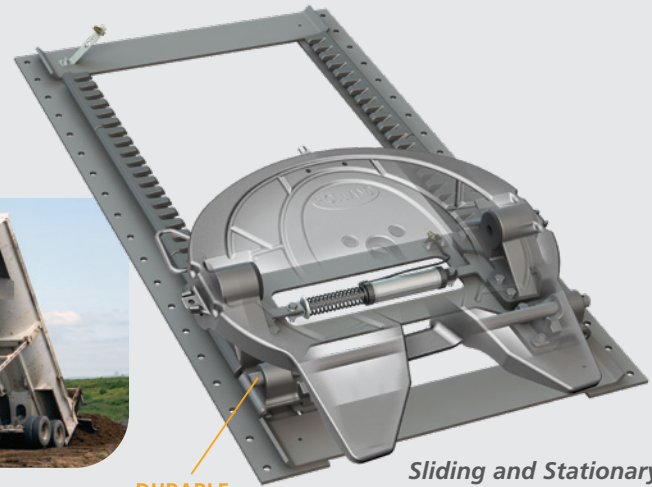
ARTICULATION POCKET LINERS

provide proper fifth wheel articulation without the need for grease or lubricants, which reduces maintenance.

FW33 VOCATIONAL MOUNTING OPTIONS

NO-TILT

The HOLLAND NO-TILT mounting base provides the solution for applications where articulation is provided by the trailer. Using high-strength steel and an enhanced casting design, the HOLLAND NO-TILT provides reliability in both articulation directions, and both push and pull vertical strains. Specially designed for maximum safety, reliability and durability.

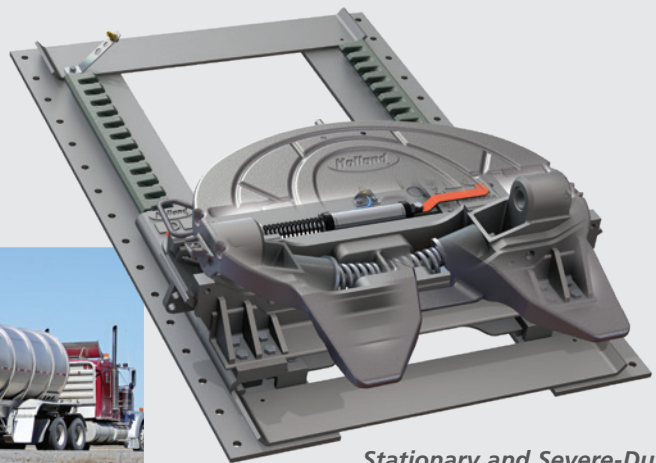


DURABLE NO-TILT BAR

Sliding and Stationary No-Tilt mounting base models available.

KOMPENSATOR

The patented design of the HOLLAND Kompensator® cradles the fifth wheel to provide side-to-side compensation in uneven terrain. This allows more flexibility between tractor and trailer and reduces torque and twist transfer through the fifth wheel to the trailer.



Stationary and Severe-Duty Slider Kompensator mounting base models available.

IN-CAB AIR RELEASE

SIMPLE, EASY TO OPERATE, IN-CAB LOCK RELEASE SYSTEM

HOLLAND In-Cab Release improves safety, productivity, and helps reduce driver injury. Air Lock Release allows quick and safe uncoupling of the fifth wheel from the cab, and protects the driver from potential physical stress and muscle strain.

Corrosion resistant pneumatic cylinder



OPERATING INSTRUCTIONS:
1) PARK TRACTOR/TRAILER, DISCONNECT TRAILER WIRING.
ACTIVATE KINGPIN RELEASE VALVE. TRAILER WILL BOUNCE.
RELEASE AND HOLD CONTROL VALVE (RELEASE KINGPIN LOCK).
DEACTIVATE KINGPIN RELEASE.

2) TRACTOR PARKING BRAKE SET, TRACTOR FORWARD.

FW33 FIFTH WHEEL SPECIFICATIONS

FW33 TOP PLATE ONLY

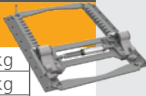
MODEL NUMBER		APPROX. WEIGHT
XA-331-A-L-P	Left-Hand	251 lbs/114 kg
XA-331-A-P	Right-Hand	251 lbs/114 kg



FW33 ILS™ SLIDING

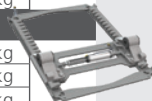
OUTBOARD MOUNT

MODEL NUMBER	NOMINAL F.W. HEIGHT	SLIDE TRAVEL	APPROX. WEIGHT
FW33J712XL00	7.1"	12"	443 lbs/201 kg
FW33J724XL00	7.1"	24"	476 lbs/216 kg
FW33J736XL00	7.1"	36"	510 lbs/233 kg
FW33J748XL00	7.1"	48"	543 lbs/246 kg
FW33J812XL00	8.1"	12"	447 lbs/203 kg
FW33J824XL00	8.1"	24"	481 lbs/218 kg
FW33J836XL00	8.1"	36"	515 lbs/234 kg
FW33J848XL00	8.1"	48"	548 lbs/249 kg
FW33J912XL00	9.1"	12"	451 lbs/205 kg
FW33J924XL00	9.1"	24"	485 lbs/220 kg
FW33J936XL00	9.1"	36"	518 lbs/234 kg
FW33J948XL00	9.1"	48"	539 lbs/244 kg
FW33J012XL00	10.1"	12"	453 lbs/205 kg
FW33J024XL00	10.1"	24"	486 lbs/220 kg
FW33J036XL00	10.1"	36"	520 lbs/236 kg
FW33J048XL00	10.1"	48"	553 lbs/251 kg



INBOARD MOUNT

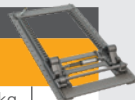
FW33H712XL00	7.1"	12"	413 lbs/187 kg
FW33H724XL00	7.1"	24"	440 lbs/200 kg
FW33H736XL00	7.1"	36"	467 lbs/212 kg
FW33H748XL00	7.1"	48"	494 lbs/224 kg
FW33H812XL00	8.1"	12"	417 lbs/189 kg
FW33H824XL00	8.1"	24"	444 lbs/201 kg
FW33H836XL00	8.1"	36"	471 lbs/214 kg
FW33H848XL00	8.1"	48"	498 lbs/226 kg
FW33H912XL00	9.1"	12"	421 lbs/191 kg
FW33H924XL00	9.1"	24"	448 lbs/203 kg
FW33H936XL00	9.1"	36"	475 lbs/215 kg
FW33H948XL00	9.1"	48"	502 lbs/228 kg
FW33H012XL00	10.1"	12"	435 lbs/197 kg
FW33H024XL00	10.1"	24"	462 lbs/210 kg
FW33H036XL00	10.1"	36"	489 lbs/222 kg
FW33H048XL00	10.1"	48"	516 lbs/234 kg



FW33 ILS™ SLIDING NO-TILT

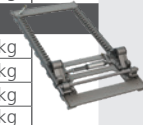
OUTBOARD MOUNT

MODEL NUMBER	NOMINAL F.W. HEIGHT	SLIDE TRAVEL	APPROX. WEIGHT
FW33N906YL00	9.1"	6"	538 lbs/244 kg
FW33N918YL00	9.1"	18"	571 lbs/259 kg
FW33N930YL00	9.1"	30"	605 lbs/274 kg
FW33N942YL00	9.1"	42"	638 lbs/289 kg



INBOARD FOR ANGLE MOUNTING

FW33N906WL00	9.1"	6"	520 lbs/236 kg
FW33N918WL00	9.1"	18"	547 lbs/248 kg
FW33N930WL00	9.1"	30"	576 lbs/261 kg
FW33N942WL00	9.1"	42"	603 lbs/274 kg



FW33 STATIONARY

INTEGRATED PLATE MOUNT

MODEL NUMBER	NOMINAL F.W. HEIGHT	APPROX. WEIGHT
FW33Z600XL00	6.0"	326 lbs/148 kg
FW33Z700XL00	7.0"	333 lbs/151 kg
FW33Z800XL00	8.0"	339 lbs/154 kg
FW33Z900XL00	9.0"	337 lbs/153 kg



FW33 STATIONARY NO-TILT

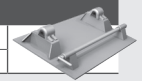
OUTBOARD MOUNT

MODEL NUMBER	NOMINAL F.W. HEIGHT	APPROX. WEIGHT
FW33N800YL00	8.2"	488 lbs/221 kg
FW33N900YL00	9.2"	487 lbs/221 kg



INBOARD FOR ANGLE MOUNTING

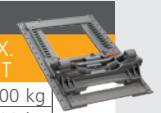
FW33N800ZL00	8.1"	451 lbs/205 kg
FW33N900ZL00	9.1"	450 lbs/204 kg



FW33 SEVERE-DUTY SLIDING KOMPENSATOR

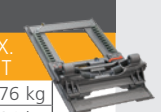
OUTBOARD MOUNT

MODEL NUMBER	NOMINAL F.W. HEIGHT	SLIDE TRAVEL	APPROX. WEIGHT
FW33K312YL00	13"	12"	881 lbs/400 kg
FW33K324YL00	13"	24"	931 lbs/422 kg
FW33K336YL00	13"	36"	981 lbs/445 kg
FW33K348YL00	13"	48"	1031 lbs/468 kg
FW33K360YL00	13"	60"	1081 lbs/490 kg
FW33K372YL00	13"	72"	1131 lbs/513 kg



INBOARD MOUNT

MODEL NUMBER	NOMINAL F.W. HEIGHT	SLIDE TRAVEL	APPROX. WEIGHT
FW33K312ZL00	13"	12"	830 lbs/376 kg
FW33K324ZL00	13"	24"	868 lbs/394 kg
FW33K336ZL00	13"	36"	906 lbs/411 kg
FW33K348ZL00	13"	48"	945 lbs/429 kg
FW33K360ZL00	13"	60"	983 lbs/446 kg
FW33K372ZL00	13"	72"	1021 lbs/463 kg



FW33 STATIONARY KOMPENSATOR

OUTBOARD PLATE MOUNT

MODEL NUMBER	NOMINAL F.W. HEIGHT	APPROX. WEIGHT
FW33K000YL00	10.1"	584 lbs/265 kg
FW33K200YL00	12.1"	649 lbs/294 kg
FW33K300YL00	13.1"	660 lbs/299 kg



For Air Release option, add "80" to end of model number. Example: FW33A712XL80.

For right-hand release, replace "L" with "R" in model number.

Other mounting systems and options are available. Please contact Customer Service for details.



TRAILER AXLES AND
SUSPENSION SYSTEMS



COUPLING AND
LIFTING SYSTEMS



SUSPENSIONS FOR
TRUCKS AND BUSES



SUSPENSIONS AND
AXLE SYSTEMS



V. ORLANDI
TOWING
SYSTEMS



TRAILER AXLES/SUSPENSIONS,
COUPLING AND LIFTING
SYSTEMS

safholland.com

SAF-HOLLAND, Inc.
800.876.3929

SAF-HOLLAND Canada Limited
519.537.3494
Western Canada 604.574.7491

SAF-HOLLAND Mexico
52.55.5456.8641