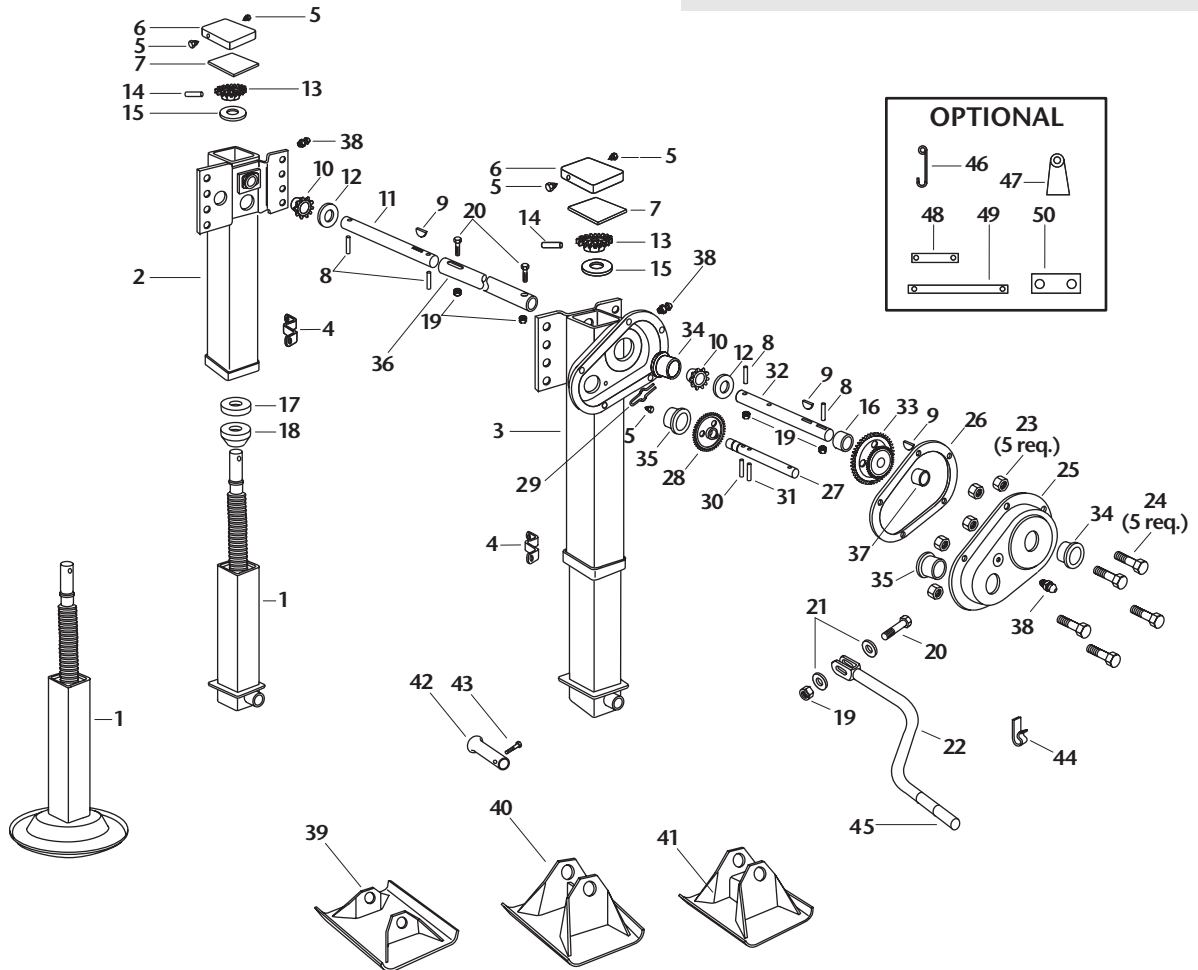


FORMULA 150 LANDING GEAR PARTS LIST

SERVICE PARTS ONLY

Please contact Customer Service for part availability



ITEM	PART NUMBER	NO.	PART NAME	ITEM	PART NUMBER	NO.	PART NAME
1	See chart 2 (over)	2	Inner leg and screw assembly	26	XB-01791	1	Gearbox cover gasket
2	See chart 1 (over)	1	Single speed outer leg	27	See chart 1 (over)	1	Crank shaft
3	See chart 1 (over)	1	2-speed outer leg	28	XA-0306-1	1	Drive cluster gear .88" bore
4	LG0266	2	Brace ear	29	XB-03370-1	1	Shifter spring
5	XB-ST5-008-11	5	Self-tapping screws	30	XB-21-S-187-1000	1	Roll pin .19" x 1"
6	XA-06218	2	Upper leg cover	31	XA-01792	1	Pin
7	XB-LG0893	2	Leg cover gasket	32	See chart 1 (over)	1	2-speed drive shaft
8	XB-SP-014-27	4	.25" x 1.50 spring pin	33	LG2131-02	1	Driven cluster gear (1" bore)
9	XB-KEY-018-02	3	Woodruff key	34	XB-0307-PM	2	Bearing (1" diameter)
10	XB-LG1823-01	2	Pinion gear	35	XB-0308-PM	2	Bearing (.88" diameter)
11	See chart 1 (over)	1	Single speed drive shaft	36	LG0094-6825	1	Cross shaft
12	XB-PW-016-19	2	Washer	37	LG2125	1	Tube spacer
13	XA-LG0570	2	Bevel gear	38	XB-GRF-022-16	5	Lube fitting
14	XB-GP-052-21	2	.38" x 2" groove pin	39	LG0056	2	Skid foot (2.00" high)
15	XB-PW-016-62	2	Washer	40	LG0055	2	Skid foot (4.5" high) standard
16	LG2126	1	Spacer	41	LG0055-01	2	Skid foot (4.5" high) hvy. duty
17	XB-BRG-013-77	2	Thrust bearing	42	LG0070-02	2	Axle
18	XB-LG0544	2	Collar	43	XB-HHC-050-69	2	.38"-16 x .75" hex bolt
19	XB-SLN-012-04	5	.38"-16 locknut	44	XB-LG0085	1	Crank holder
20	XB-HHC-050-42	3	.38"-16 x 2.25 hex bolt	45	XA-01918-1	1	Extra long crank (optional)
21	XB-PW-016-03	2	.38" flat washer	46	LG0086-01	1	Crank hanger (optional)
22	XA-01918	1	Crank handle assy.	47	XA-02195	1	Extension bracket (optional)
23	XB-3103	5	.25"-28 locknut	48	XA-02198-2	1	Short ext. shaft (optional)
24	XB-CX-14-28-F-58	5	.25"-28 x .62" hex bolts	49	XA-02198-1	1	Long ext. shaft (optional)
25	XA-06224-A	1	Gearbox cover	50	XA-02197	1	Coupling