



AIRLITE2

AIR LEVEL INSTALLATION KIT



SPK0025 and SPK0026 Air Level For AIRLITE2 Suspensions For 42" and 48" Box Widths

Air Level Parts Lists and Installation Instructions

AIRLITE 2 AIR LEVEL PARTS LISTS

42" Box Width

SPK0025 Parts List

ITEM NO.	DESCRIPTION	HOLLAND PART NO.	QTY.
1	Service Chamber	SL0969	1
2	Support, Shaft	SLOA1123	1
3	Assembly, Cam Dock Walk	SLOA1124	2
4	Bracket Mtg. Air Chamber	SLOA1129	1
5	Cam Weld Assy - Lower Dock Walk	SLOA1134-42	1
6	AirLevel Installation Instructions	XL-AR426	1
7	Block, Lower Dock Walk	SP0283	1
8	Block, Lower Dock Walk Kit	SP0283-01	1
9	Screw Cap 1/2" - 13 x 1 1/4" Hex Hd. Plain GR 5	XB-HHC-001-33	4
10	Lock Nut 1/2" - 13 Plain GR B (prevailing torque)	XB-SLN-012-42	4
11	Spring Extension	XB-SPG-020-34	1

48" Box Width

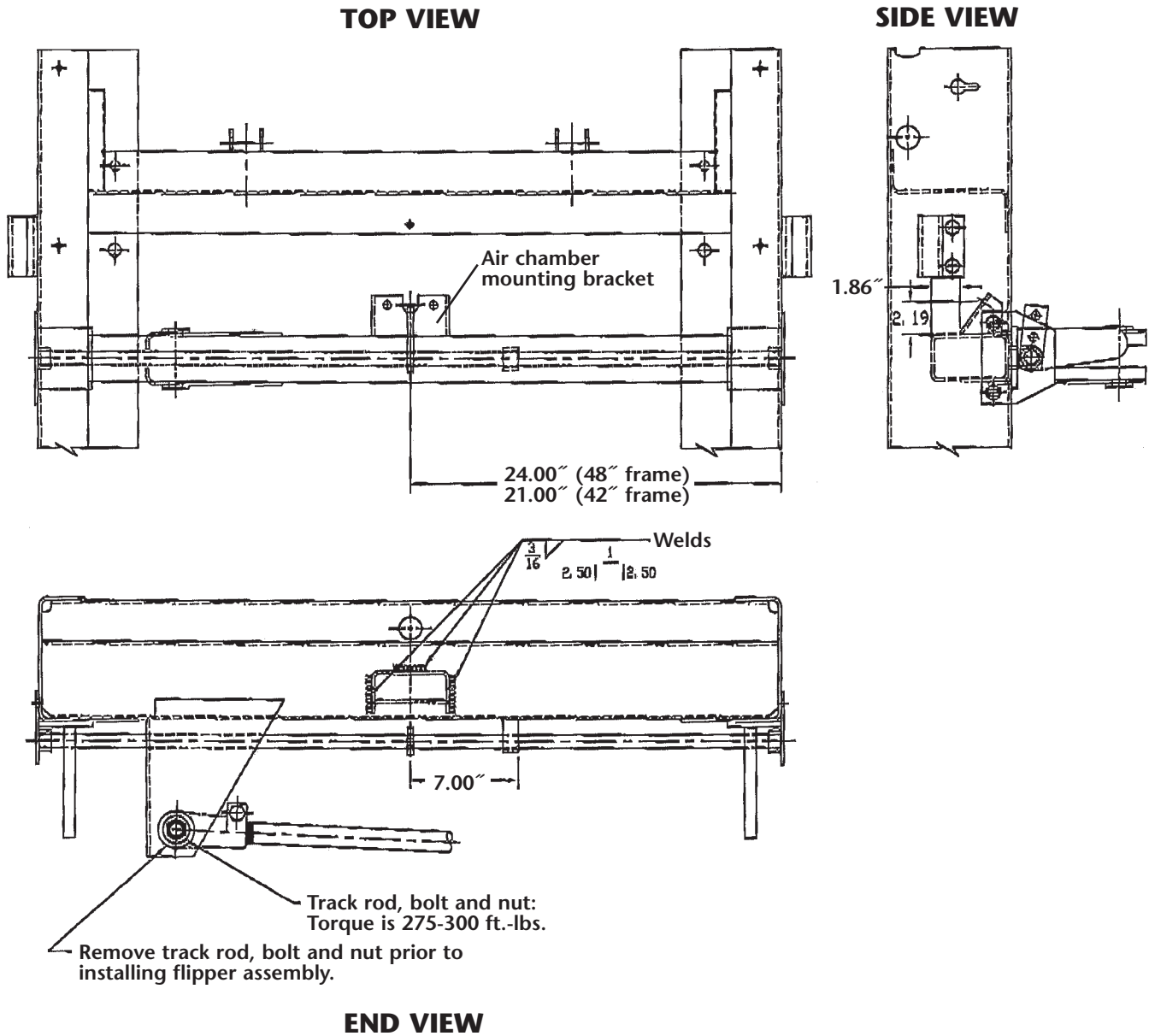
SPK0026 Parts List

ITEM NO.	DESCRIPTION	HOLLAND PART NO.	QTY.
1	Service Chamber	SL0969	1
2	Support, Shaft	SLOA1123	1
3	Assembly, Cam Dock Walk	SLOA1124	2
4	Bracket Mtg. Air Chamber	SLOA1129	1
5	Cam Weld Assy - Lower Dock Walk	SLOA1134-48	1
6	AirLevel Installation Instructions	XL-AR426	1
7	Block, Lower Dock Walk	SP0283	1
8	Block, Lower Dock Walk Kit	SP0283-01	1
9	Screw Cap 1/2" - 13 x 1 1/4" Hex Hd. Plain GR 5	XB-HHC-001-33	4
10	Lock Nut 1/2" - 13 Plain GR B (prevailing torque)	XB-SLN-012-42	4
11	Spring Extension	XB-SPG-020-34	1

INSTALLATION INSTRUCTIONS

1. Park trailer on firm level ground.
2. Chock the tires so the trailer cannot move.
3. Raise the trailer body about 2" to 3" until the weight of the trailer does not rest on the suspension.
4. Block the trailer body in this position.
5. Remove the track rod, bolts and nuts where the rod attaches to the frame in **FIGURE 1** and on the rear beam in **FIGURE 2**.

FIGURE 1



INSTALLATION INSTRUCTIONS *continued*

6. Install the flipper assembly, with the mounting plates, bolts (torque).
7. Install the lower blocks (SP0283 and SP0283-01) on the Rear Beam Assembly (**FIGURE 2**).
8. Reinstall the track rod, torque bolts and nuts to 275-300 ft. lbs.

FIGURE 2

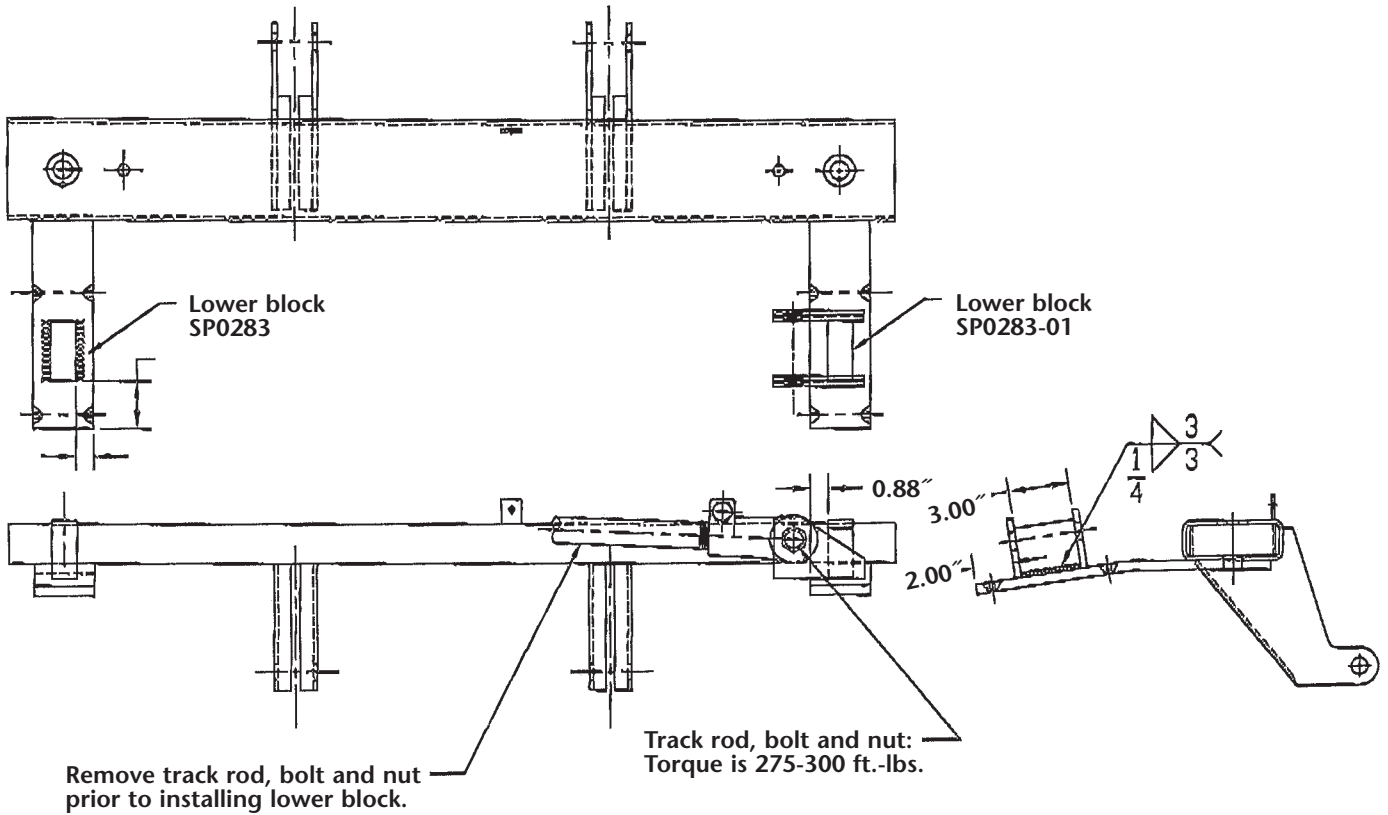
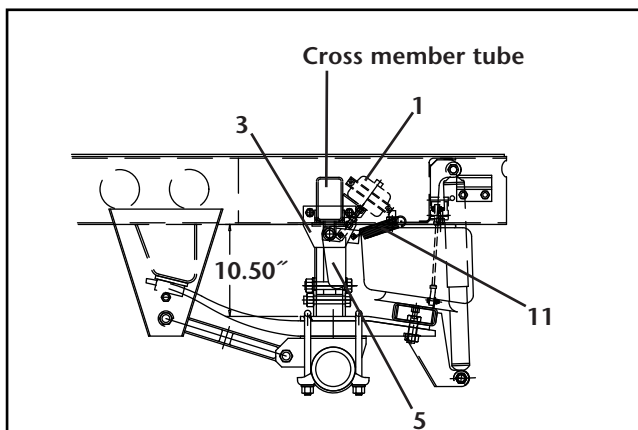


FIGURE 2 DETAIL



INSTALLATION INSTRUCTIONS *continued*

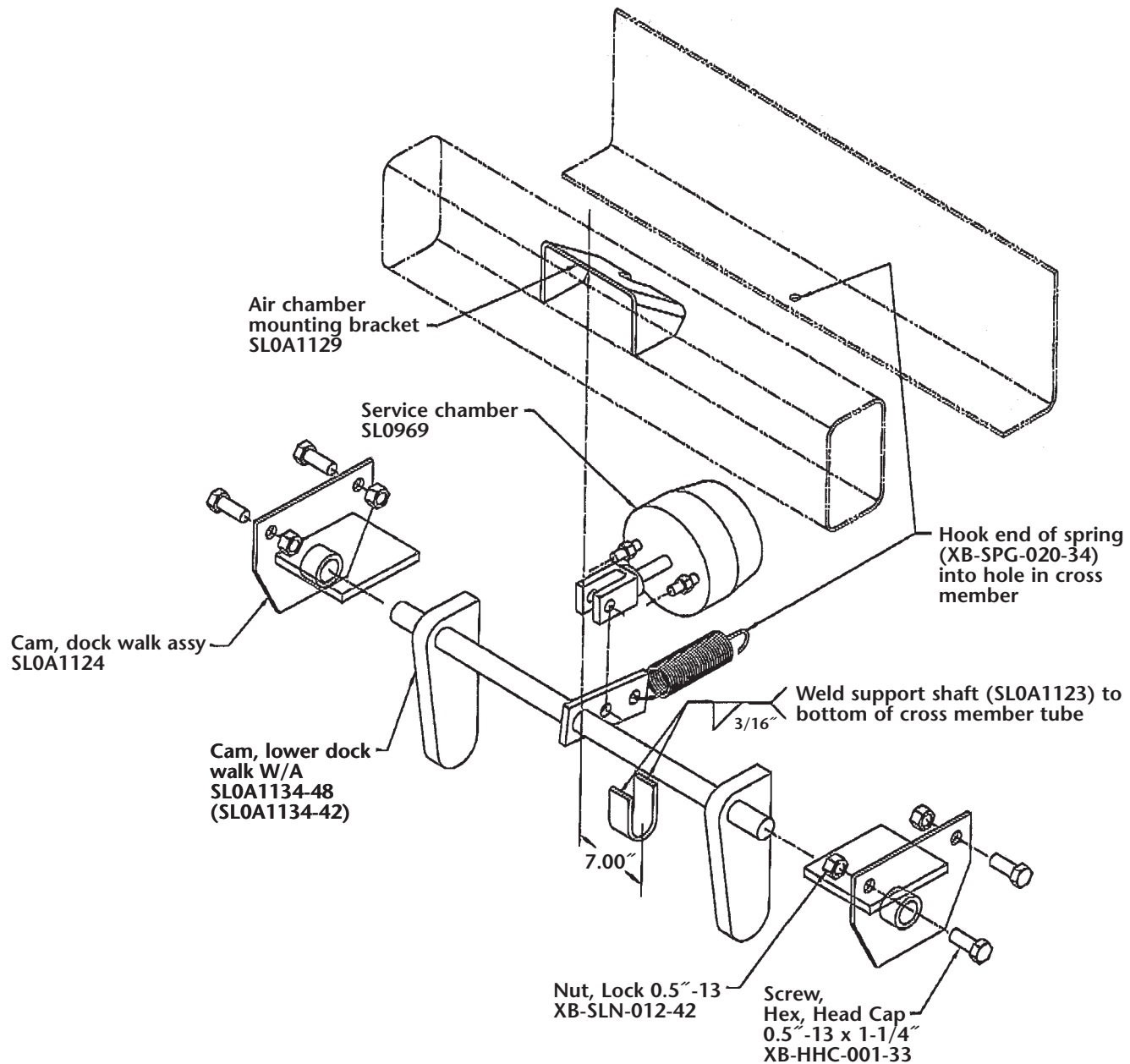
9. Install the air chamber mounting bracket (SL0A1129) to the cross member tube as in **FIGURE 1**.
10. Install the air chamber (SL0969) and the spring (XB-SPG-020-34); see **FIGURE 3**.
11. Connect an air line to the brake chamber as shown on drawing AS-1006.

12. Check operation by pressuring supply (emergency) airline.

NOTE: AirLevel™ should retract when air is applied and swing down to engage block when air is released.

13. Lower trailer and remove blocks.

FIGURE 3 AIR LEVEL COMPONENTS EXPLODED VIEW



HOLLAND USA, INC.
 1950 Industrial Blvd. • P.O. Box 425 • Muskegon, MI 49443-0425
 Phone 888-396-6501 • Fax 800-356-3929
 www.thehollandgroupinc.com

Copyright © March 2005 • The Holland Group, Inc.

Holland USA, Inc. Facilities:

Dumas, AR Muskegon, MI
 Holland, MI Warrenton, MO
 Monroe, NC Wylie, TX

Ph: 888-396-6501 Fax: 800-356-3929

Holland International, Inc.

Holland, MI
 Phone: 616-396-6501
 Fax: 616-396-1511

Holland Hitch of Canada, Ltd.

Woodstock, Ontario • Canada
 Phone: 519-537-3494
 Fax: 800-565-7753

Holland Equipment, Ltd.

Norwich, Ontario • Canada
 Phone: 519-863-3414
 Fax: 519-863-2398

Holland Hitch Western, Ltd.

Surrey, British Columbia • Canada
 Phone: 604-574-7491
 Fax: 604-574-0244