

# Marketing Bulletin

## FW35 Fifth Wheel

### FW35 Fifth Wheel Product Change

July 2011

#### Notice

This SAF-HOLLAND product change notice applies to all FW35 fifth wheel top plate assemblies (with the exception of NoTilts and Terminal Tractor FW35-03344 fifth wheels). It also does not apply to FW31 (NoLube™) or FW33 (LowLube) fifth wheel top plates.

As of July 2011, SAF-HOLLAND is implementing an enhanced design top plate for all FW35's (with the exceptions listed above). The new design provides a weight savings of 14 lbs. and features NoLube™ pocket liners. It is a running change with no change to any assembly part numbers.

There are 3 visual changes to the top plate, and one new feature.

#### Visual Change #1 - Grease Grooves

The new top plate design includes larger grease grooves over the mounting bracket pockets.

#### Visual Change #2 - Throat Opening

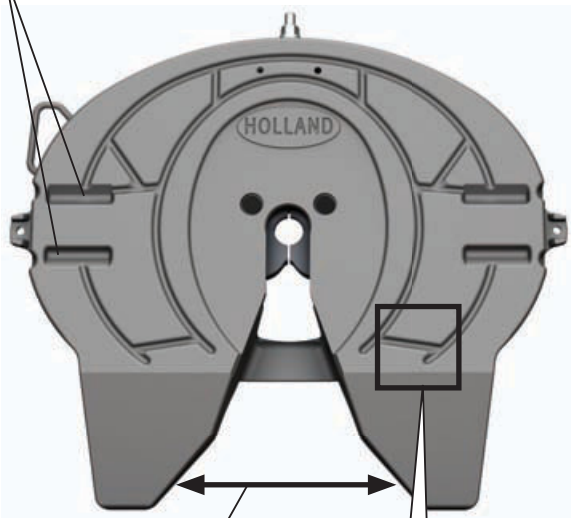
The new top plate design includes a wider throat opening for easier kingpin alignment during coupling.

#### Visual Change #3 - Top Plate Surface Finish

The new top plate utilizes an "As Cast" finish in place of a machined finish.

#### NEW DESIGN

- ① Larger Grease Grooves Over Pockets



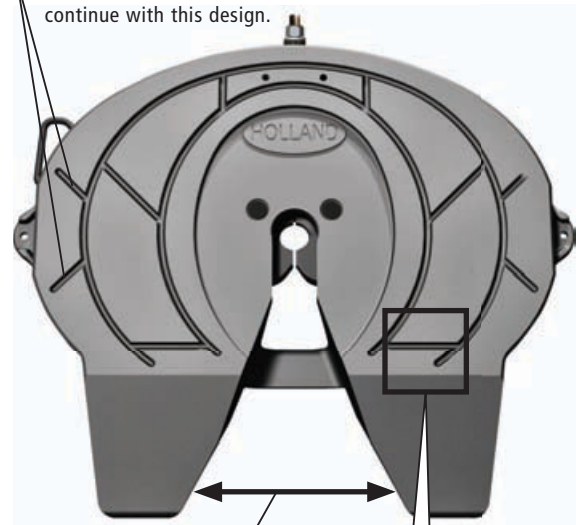
- ② Wider Throat Opening

- ③ "As Cast" Steel Top Plate Finish  
NOTE: NoTilt and FW35-03344 top plates will continue to be machined.



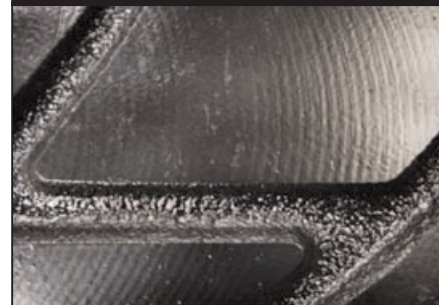
#### CURRENT DESIGN

- ① Smaller Grease Grooves Over Pockets  
NOTE: NoTilt, FW35-03344, FW31 and FW33 will continue with this design.



- ② Smaller Throat Opening

- ③ Machined Steel Top Plate Finish





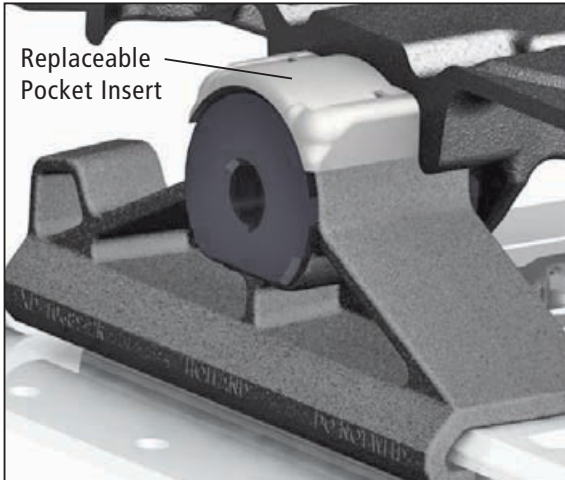
SAF-HOLLAND Group

# FW35 Fifth Wheel

## New NoLube™ Articulation Pocket Liner Feature

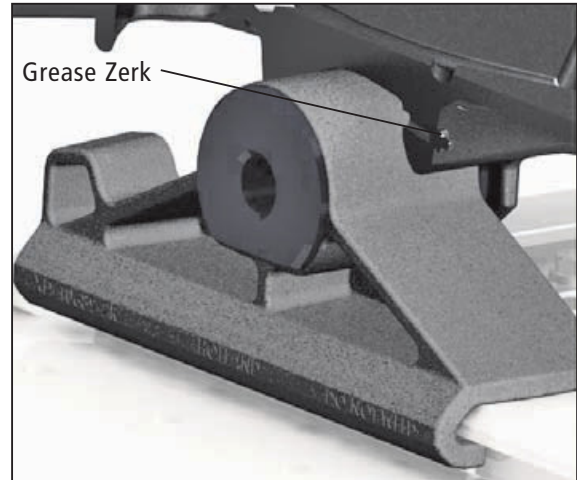
The enhanced design of the FW35 top plate now features a one-piece replaceable NoLube™ (lube-free) pocket liner insert.

### NEW DESIGN



**Eliminates the Need for Routine Lubrication**

### CURRENT DESIGN



**Requires Routine Lubrication**

These new FW35 top plate design enhancements provide increased durability and a weight savings of 14 lbs. The NoLube pocket liner feature provides added maintenance convenience by eliminating the need for routine pocket lubrication.

None of these changes effect the fit of the top plate. The new design is completely interchangeable with the current top plate design and the current top plate design will interchange with the new design.

If you have any questions or require additional product assistance, please call to speak with a SAF-HOLLAND Customer Service Representative.

USA - Call 800.876.3929  
Canada - Call 519.537.3494  
Mexico - Call 52.1.55.5456.8641

