

Important Info – September 2018

HOLLAND Fifth Wheels

Retirement of Select Option Codes for FW35 Series Fifth Wheels

Attention

This product retirement notice applies to all HOLLAND FW35 Series (FW35/33/31) fifth wheels.

Effective January 1, 2019, SAF-HOLLAND will retire the following option codes for FW35 Series fifth wheel assemblies:

- **Option Code 1R:** ELI-te with installed grease fittings – **Replacement Code: 1P**
- **Option Code 89:** Unique trailer top plate – **No Direct Replacement**
- **Option Code 14:** Installed grease fittings – **Replacement Code: 24**
- **Option Code 15:** KOMPENSATOR dust cover with grease fittings installed – **No Direct Replacement**
- **Option Code 1F:** Grease fittings installed with cross hole – **No Direct Replacement**
- **Option Code 40:** Secondary lock with grease fittings installed – **Replacement Code: 48**
- **Option Code 92:** Non-drop handle – **No Direct Replacement**

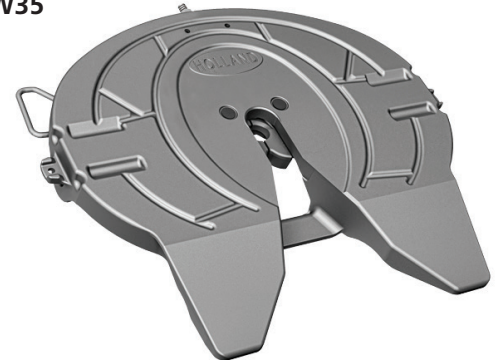
The following part numbers will be made obsolete:

- FW35-S12125 with FW35A712XL1L as an alternate
- FW35-S10770-L1R with FW35Z800XL1P as an alternate
- FW35-S10771-L1R with FW35A824XL1P as an alternate

Customers seeking an obsolete option code should consider the alternate part number listed. Orders for the option codes will be accepted until January 1, 2019.

If you have any questions or require additional product assistance, please contact your account manager or customer service representative.

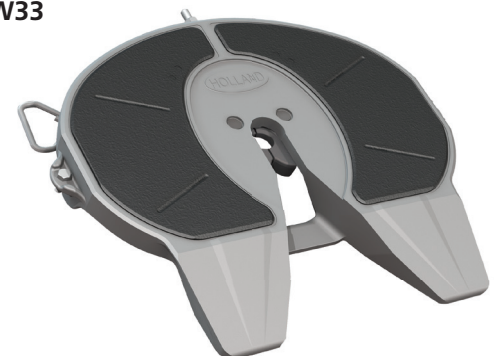
FW35



FW31



FW33



Important Info (con't.)



SAF-HOLLAND Group

HOLLAND Fifth Wheels

Retirement of Select Option Codes for FW35 Series Fifth Wheels

Part Number	Option Code	Action	Alternate	Comments
FW35-S10770-L1R	1R	Retire	FW35Z800XL1P	Alternate is ELI-te with option 24
FW35-S10771-L1R	1R	Retire	FW35A824XL1P	Alternate is ELI-te with Option 24
FW35-S12125	89, 1L	Retire	FW35A712XL1L	Alternate is ELI-te without Option 89
N/A	14	Retire	Option 24	Alternate is Option 24
N/A	15	Retire	Option 24 or 13	Alternate is Option 24 or 13. No combination option available at this time
N/A	1F	Retire	Option 24	Alternate is Option 24, no combination option available at this time
N/A	40	Retire	Option 48	Alternate is Option 48
N/A	92	Retire	None	No direct replacement
N/A	11	Obsolute	None	No longer available
N/A	44	Obsolute	None	No longer available
N/A	55	Obsolute	None	No longer available
N/A	0J	Obsolute	None	No longer available
N/A	90	Obsolute	None	No longer available
N/A	0G	Obsolute	None	No longer available
N/A	8E	Obsolute	None	No longer available
N/A	30	Obsolute	None	No longer available
N/A	0K	Obsolute	None	No longer available
N/A	0L	Obsolute	None	No longer available
N/A	0D	Obsolute	None	No longer available
N/A	0H	Obsolute	None	No longer available
N/A	0T	Obsolute	None	No longer available
N/A	0V	Obsolute	None	No longer available
N/A	0X	Obsolute	None	No longer available
N/A	0Y	Obsolute	None	No longer available
N/A	12	Obsolute	None	No longer available
N/A	25	Obsolute	None	No longer available
N/A	36	Obsolute	None	No longer available
N/A	38	Obsolute	None	No longer available
N/A	79	Obsolute	None	No longer available
N/A	85	Obsolute	None	No longer available
N/A	88	Obsolute	None	No longer available
N/A	95	Obsolute	None	No longer available

Tel 888.396.6501 · info@safholland.us · 2018-09-28 · XL-FW20162WI-en-US Rev A

