



GO THE DISTANCE.

FIETH SIMPLEX SERIES Jaw/Kingpin Clearance Adjustment Jaw Removal and Replacement on Tractor WHEELS

Jaw/Kingpin Clearance Adjustment

Check for excessive clearance at the kingpin at regular intervals. New fifth wheels provide approximately 1/16" clearance between the kingpin and jaw. This clearance is necessary to permit proper locking and to accommodate SAE kingpin tolerances.

CAUTION The lock is spring-loaded. To avoid injury, keep hands away from lock and jaw. Use a bar or block to rotate jaw when opening or closing the locking mechanism. When locking the jaw, stand clear of the extended operating rod, as it retracts rapidly during lockup.

1. Ram a kingpin gauge (Holland Simplex #4000171) into the open jaw to achieve a coupled and locked condition (Figure 1).

For straight pull wheels, the safety indicator must swing freely over the operating rod (Figure 1a).

For rotary pull wheels, the safety indicator is horizontal and the cam is in contact with the indicator (Figure 1b).

2. Measure the maximum longitudinal movement. If using a gauge, the plate must be flat on the wheel (Figure 1).
3. If clearance is excessive (beyond 1/8"), it should be **DIALED OUT** using the eccentric jaw pin on which the jaw pivots.
4. Remove the gauge. When removing the gauge, two people are usually required. The operating rod must be fully extended and held out beyond the lockset while the gauge is pulled straight back out of the fifth wheel jaw opening towards the rear end stops (considerable force is required for removal).
5. Rotate the jaw to the locked position. This removes the pressure on the jaw pin (Figure 2). See the **CAUTION** above.
6. Remove the jaw pin clinch pin (Figure 3).

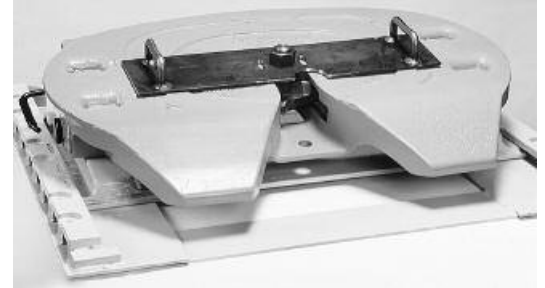


Figure 1

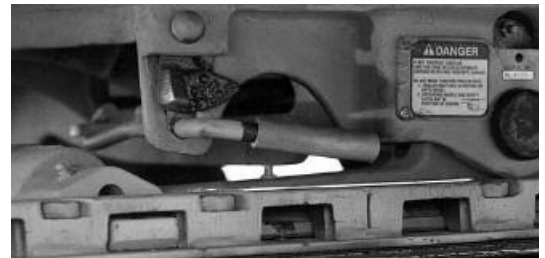


Figure 1a



Figure 1b



Figure 2

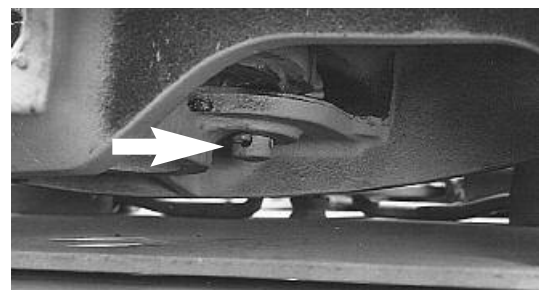


Figure 3

SIMPLEX SERIES

Jaw/Kingpin Clearance Adjustment

7. Lift the jaw pin sufficiently to clear the indexing hexagon head (*Figure 4*), and rotate the pin clockwise (counterclockwise for Simplex Right-Hand) to the next higher number position (*Figure 5*). See the **NOTE** and **CAUTION** statement below.
8. Insert a gauge and measure the clearance. If the clearance remains excessive, repeat Steps 4 – 8 until the clearance allows approximately 1/16" kingpin movement.
9. After the final adjustment, reinstall the clinch pin.

Note: Starting from the original position (arrow pointing rearward), the three numbered positions (numbers indented in the casting) provide jaw slack take-up as follows (*Figure 6* and *Figure 7*):

Position	Incremental	Cumulative
↓	Starting	—
↑	Position	
1	1/16"	1/16"
2	3/32"	5/32"
3	1/16"	7/32"



Figure 4

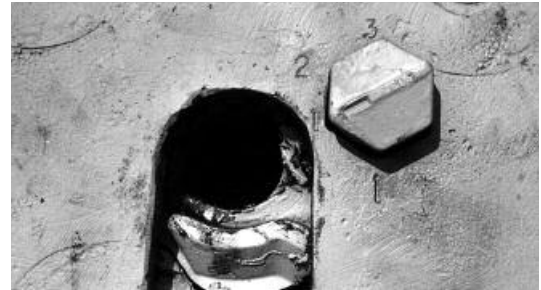


Figure 5



Figure 6

CAUTION DO NOT rotate the jaw beyond Position 3. If more than 1/8" clearance remains at Position 3, replace the jaw and jaw pin. ALWAYS recheck using a gauge to assure that a positive lock (safety indicator horizontal) can be achieved. Remember to secure the jaw pin by installing a clinch pin. DO NOT overadjust, or the fifth wheel will not lock to a kingpin.

The eccentric jaw pin can be reused. If excessive wear occurs in the plate casting jaw pin head cavity, an oversize eccentric jaw pin can be used (Holland part number 41-3-09977).

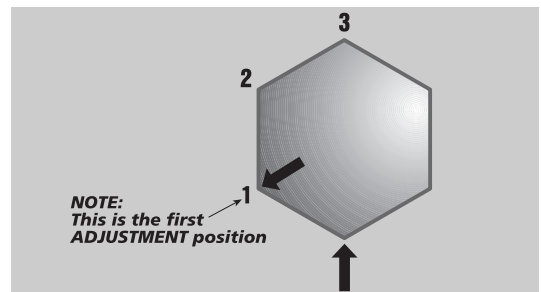


Figure 7

SIMPLEX SERIES

Jaw Removal and Replacement on Tractor

Jaw Removal and Replacement on Tractor

Disassembly

1. Lock the jaw mechanism using a bar or block (Figure 8).

CAUTION The lock is spring-loaded. To avoid injury, keep hands away from lock and jaw. Use a bar or block to rotate jaw when opening or closing the locking mechanism. When locking the jaw, stand clear of the extended operating rod, as it retracts rapidly during lockup.

2. Remove the clinch pin (Figure 3) and completely remove the eccentric jaw pin (Figures 9, 10 and 11).
3. Slide the jaw away from the lock and remove from the underside of the fifth wheel plate casting (Figure 12).

Assembly

1. Clean and lubricate the fifth wheel plate jaw area and the replacement jaw.
2. Reassemble the parts in the reverse order of disassembly. **NOTE:** Position the eccentric jaw pin with its arrow pointing to the arrow on the fifth wheel plate casting.
3. Reinstall the clinch pin.
4. Perform Steps 1 through 9 in the section “Jaw/Kingpin Clearance Adjustment”.



Figure 8



Figure 9



Figure 10



Figure 11



Figure 12



GO THE DISTANCE.

Copyright © January 2005 • The Holland Group, Inc.

Holland USA, Inc. Facilities:

Dumas, AR Muskegon, MI
Holland, MI Warrenton, MO
Monroe, NC Wylie, TX

Ph: 888-396-6501 Fax: 800-356-3929

Holland International, Inc.

Holland, MI
Phone: 616-396-6501
Fax: 616-396-1511

Holland Hitch of Canada, Ltd.

Woodstock, Ontario • Canada
Phone: 519-537-3494
Fax: 800-565-7753

Holland Equipment, Ltd.

Norwich, Ontario • Canada
Phone: 519-863-3414
Fax: 519-863-2398

Holland Hitch of Canada, Ltd.

Surrey, British Columbia • Canada
Phone: 604-574-7491
Fax: 604-574-0244