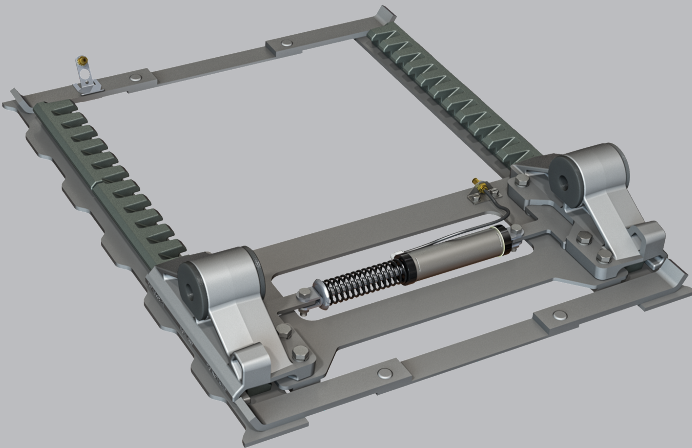


ILS Sliding Bracket Replacement Manual

ILS Sliding Rebuild Kits

- RK-10689-1
- RK-10689-2
- RK-10689-3
- RK-10689-4



Contents Page
 Introduction 2
 Notes, Cautions, and Warnings 2
 Section 1 – General Safety Instructions 3

Contents Page
 Section 2 – Fifth Wheel Intended Use 3
 Section 3 – Fifth Wheel Non-Intended Use... 3
 Section 4 – Installation 4

Introduction

This manual provides the information necessary for the replacement of the HOLLAND® ILS Slider Brackets.

Read this manual before using or servicing this product and keep it in a safe location for future reference. Updates to this manual, which are published as necessary, are available on the internet at www.safholland.us.

When replacement parts are required, SAF-HOLLAND® highly recommends the use of ONLY SAF-HOLLAND® Original Parts. A list of technical support locations that supply SAF-HOLLAND® Original Parts and an Aftermarket Parts Catalog are available on the internet at www.safholland.us or contact Customer Service at 888-396-6501.

Notes, Cautions, and Warnings

Before starting any work on the unit, read and understand all the safety procedures presented in this manual. This manual contains the terms "NOTE", "IMPORTANT", "CAUTION", and "WARNING" followed by important product information. These terms are defined as follows:

NOTE: Includes additional information to enable accurate and easy performance of procedures.

IMPORTANT: Includes additional information that if NOT followed could lead to hindered product performance.

CAUTION Used without the safety alert symbol, indicates a potentially hazardous situation which, if not avoided, could result in property damage.

CAUTION Indicates a potentially hazardous situation which, if not avoided, could result in minor or moderate injury.

WARNING Indicates a potentially hazardous situation which, if not avoided, could result in death or serious injury.

1. General Safety Instructions

- Read and observe all Warning and Caution hazard alert messages. The alerts provide information that can help prevent serious personal injury, damage to components, or both.

⚠ WARNING

Failure to follow the instructions and safety precautions in this manual could result in improper servicing or operation leading to component failure which, if not avoided, could result in death or serious injury.

- HOLLAND® ILS Slider Bracket installation and maintenance **MUST** be performed by a properly trained technician using proper/special tools, and safety procedures.

NOTE: In the United States, workshop safety requirements are defined by federal and/or state Occupational Safety and Health Act (OSHA). Equivalent laws could exist in other countries. This manual is written based on the assumption that OSHA or other applicable employee safety regulations are followed by the location where work is performed.

2. Fifth Wheel Intended Use

1. For pulling trailers with standard SAE kingpins which are in good condition and securely mounted or locked in position on the trailer.
2. For on-road hauling applications.

IMPORTANT: SAF-HOLLAND® definition of on-road means driving on 100% maintained concrete or asphalt roads.

3. Within the capacities stated in SAF-HOLLAND® literature.
4. As recommended in SAF-HOLLAND® literature (available on the internet at www.safholland.us).

3. Fifth Wheel Non-Intended Use

1. Use with non-SAE Kingpins, such as kingpins which are bent, have improper size or dimensions, are NOT secured to maintain SAE configuration, or are installed in warped trailer bolster plates.
2. Tow-away operations which damage or interfere with the proper operation of the fifth wheel.
3. The attachment of lifting devices.
4. The transport of loads in excess of rated capacity.
5. In off-road applications.

IMPORTANT: SAF-HOLLAND® defines off-road as terrain on which a tractor-trailer operates which is unpaved and rough, or ungraded. Any terrain NOT considered part of the public highway system falls under this heading.

6. As recommended in SAF-HOLLAND® literature available at www.safholland.us.

4. Installation

1. If possible, place the fifth wheel and slide base on a flat, clean working area.
2. Remove the bracket pin retention bolts and nuts from the top plate as illustrated in **Figure 1**.
3. Using a pry bar, pull the bracket pins out of the fifth wheel top plate.
4. Using a lifting device capable of lifting 500 lbs. (227 kg), remove the top plate from the brackets and set aside.

NOTE: Follow the instructions published by the lifting device manufacturer for proper operation of the lifting device.

5. To uninstall the brackets, remove the three (3) hex head screws from each of the brackets as illustrated in **Figure 2**. Discard the old lock washers, hex head screws, stop bars, and brackets.

CAUTION Secure the stop bar when removing the hex head screws to prevent it from falling off. Failure to do so could cause minor injury or property damage.

6. Place each new bracket on the slide base. Ensure that the curl of each bracket wraps under the outer edge of the slide rails (**Figure 3**), and that the holes in the tie plate align with the holes in the brackets.
7. Place a lock washer on each of the hex head screws.
8. Slide the hex head screws downward through the holes in each bracket and the tie plate.

Figure 1

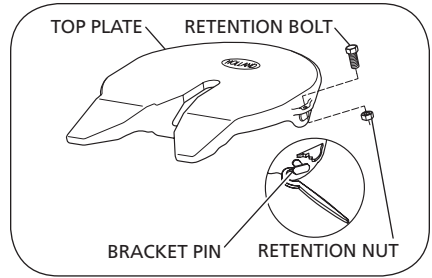


Figure 2

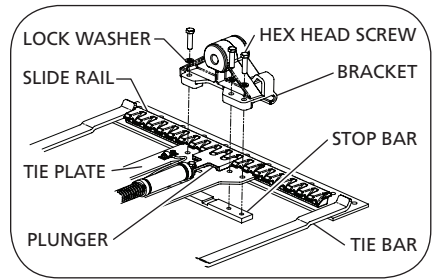
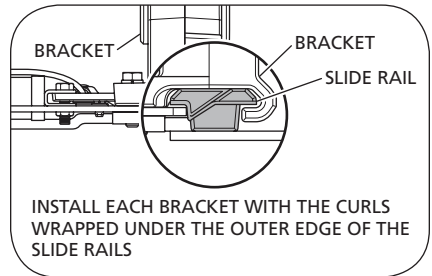


Figure 3



9. With the cutout in each new stop bar facing upward, align the tapped holes with the holes in the tie plate and use your fingers to start threading the hex head screws into the stop bars. (Install all three (3) hex head screws on one bracket before installing the remaining three (3) on the other bracket.)
10. After all six (6) fasteners are started into the stop bars, position the brackets so that they are 34" (864 mm) apart when measured from the outside of the brackets as illustrated in **Figure 4**.
11. Using the following sequence, torque each hex head screw to 195 ft.-lbs. (264 N·m). Starting with one bracket, torque the middle hex head screw first, then torque the front hex head screw (at the opposite end of the tilt stop). Torque the rear hex head screw last. Repeat this sequence for the opposite bracket.

⚠ WARNING Failure to properly torque fasteners could result in tractor-trailer separation which, if not avoided, could result in death or serious injury.

12. Thoroughly grease the top of each bracket and both bracket pins.
13. Using a lifting device capable of lifting 500 lbs. (227 kg), position the fifth wheel back onto the brackets.

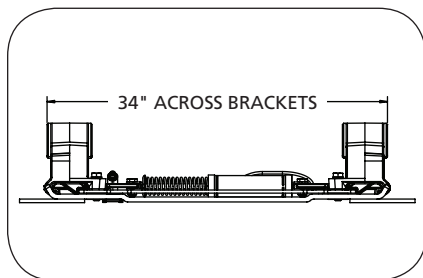
NOTE: Follow the instructions published by the lifting device manufacturer for proper operation of the lifting device.

IMPORTANT: Torque requirements listed are for clean and lubricated threads.


IMPORTANT: Use of special lubricants with friction modifiers, such as Anti-Seize or Never-Seez®, without written approval from HOLLAND® Engineering will void warranty and could lead to premature bolt failure or other component issues.

14. Insert the bracket pins on both sides of the fifth wheel top plate. Reinstall the bracket pin retention bolts and nuts and tighten securely.

Figure 4



⚠ WARNING



Failure to properly install, operate, or maintain this fifth wheel could result in tractor-trailer separation which, if not avoided, could result in death or serious injury.







From fifth wheel rebuild kits to suspension bushing repair kits, SAF-HOLLAND Original Parts are the same quality components used in the original component assembly.

SAF-HOLLAND Original Parts are tested and designed to provide maximum performance and durability. Will-fits, look-alikes or, worse yet, counterfeit parts will only limit the performance potential and could possibly void SAF-HOLLAND's warranty. Always be sure to spec SAF-HOLLAND Original Parts when servicing your SAF-HOLLAND product.

SAF-HOLLAND USA • 888.396.6501 • Fax 800.356.3929
www.safholland.us

SAF-HOLLAND CANADA • 519.537.3494 • Fax 800.565.7753
WESTERN CANADA • 604.574.7491 • Fax 604.574.0244
www.safholland.ca

SAF-HOLLAND MEXICO • 52.1.55.5456.8641 • Fax 52.55.58162230
www.safholland.com.mx

info@safholland.com

SAF-HOLLAND USA, INC.
1950 Industrial Blvd., Muskegon, MI 49443
www.safholland.com

