

## Important Info – July 2019

---

### ATLAS™ Series Landing Gear Product Enhancements

Effective: January, 2020

***Making one of the best model  
landing gear series even better!***

SAF-HOLLAND® listened to the voice of the customer and enhanced the ATLAS™ Series, including ATLAS 55, ATLAS 65 and ATLAS iM in multiple areas with design updates and new key components to maximize uptime and deliver longer performance life.

These enhancements are designed to minimize oil/grease leakage at key points.

The updates include the following:

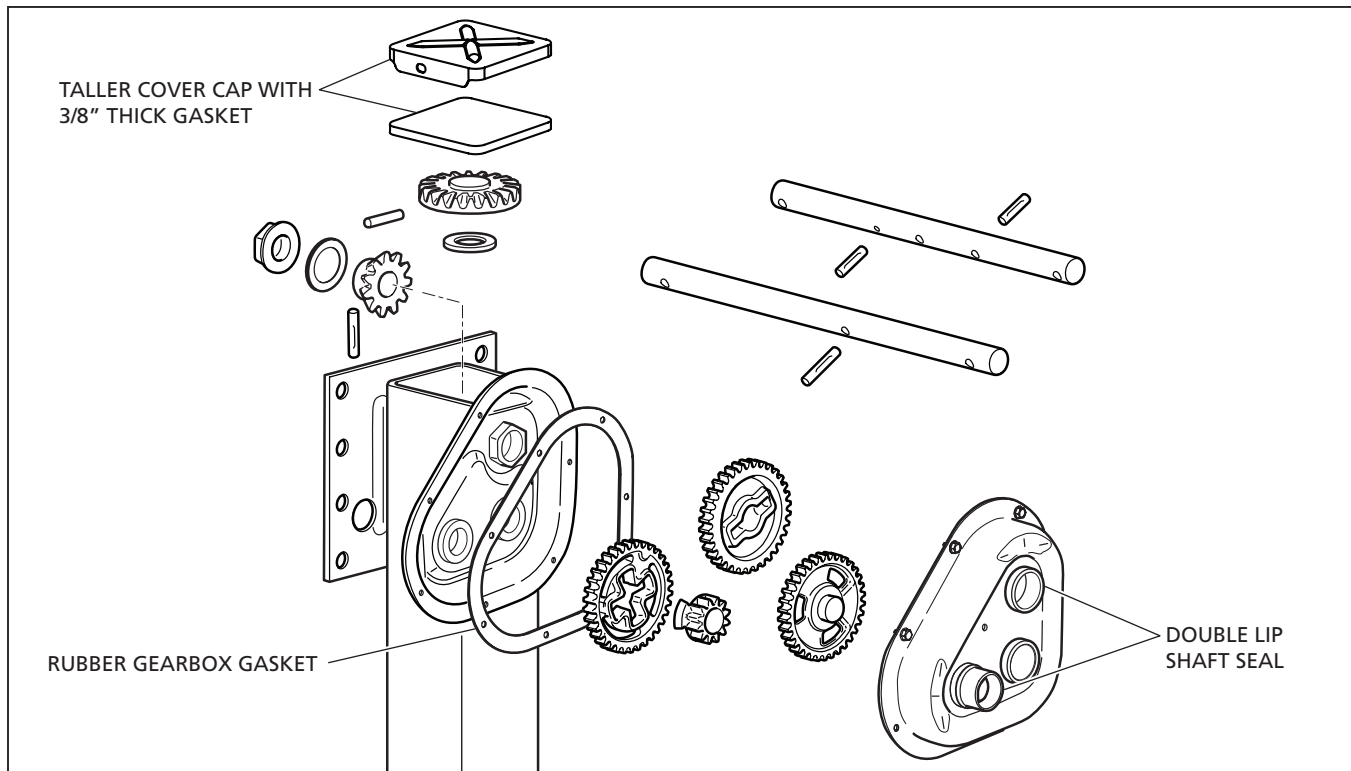
- ❶ Rubber gearbox gasket to reduce grease/oil leaks (Implemented November 2017)
- ❷ HOLLAND® True Lube™ Grease - formulated specifically not to prematurely harden and to minimize oil separation (Implemented May 2019)
- ❸ Double lip shaft seals instead of single lip shaft seals to reduce leaking
- ❹ 3/8" thick top cap gasket with taller cover cap to reduce leaks and water ingestion



# ATLAS Series Gearbox Enhancements

## ATLAS 55 Shown

Gearbox Side View



# True Lube™

for Landing Legs

**MAINTAIN THE TRUE PERFORMANCE OF YOUR HOLLAND LANDING GEAR WITH TRUE LUBE™ GREASE.**

- Formulated for optimized performance in all climates from -40° F to 150° F
- Excellent formula stability to maintain consistent smooth operation
- Wide operating temperature range to ensure crank operation
- Excellent oil bleed control to reduce oil leaks and prevent grease hardening

**Available in 5 Gallon Pails, 14 oz Tubes and 120 lb. Drums**

