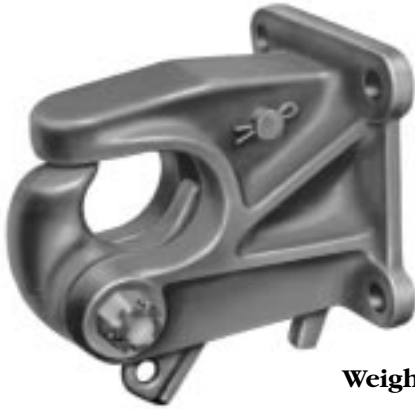




# CP-380-A

## CP-380-A SPECIFICATIONS



Weight: 17 lbs.

### HITCH

**Rigid type coupler with bottom ring pull release and secondary lock.**

**5,750 lbs. Maximum Vertical Load**  
**23,000 lbs. Maximum Gross Trailer Weight**



Maintain sufficient vertical (tongue) load to adequately control the trailer (generally 10% of g.t.w.) but do not exceed the above rated capacities.

#### **TOWING APPLICATIONS:**

Industrial material handling applications. This coupler can also be used for towing trailers and equipment designed for over-the-road towing within the stated capacities. For off-road applications, reduce the capacities above by 25% and use in conjunction with a swivel type drawbar.

#### **DRAWBAR EYE DIMENSIONS:**

2.44" to 3" I.D. with 1.25 to 1.63" diameter section. Other sizes can be used providing they permit proper coupling and are of compatible capacity.

#### **MOUNTING:**

1. Use a mounting structure of sufficient strength to support the rated capacity of the coupler in accordance with SAE J849 and SAE J847 respectively.
2. Use the hole pattern described on the reverse.
3. Use (4) .63" grade 8 fasteners, properly tightened.

#### **OPERATING INSTRUCTIONS:**



When operating, use extreme caution, the mechanism of the coupler may allow sudden movement of trailer and tow vehicle and could cause injury to the operator.

1. Before operating, inspect for proper operation, worn, damaged or missing parts and secure mounting. Correct as required before use.
2. Open coupler jaw (XA-376) by pulling secondary lock (A) towards the trailer. Push the coupler latch (XA-381-2) back towards the mounting base and pull the jaw open.

3. To couple, back near the trailer with the trailer drawbar centered on the coupler. Stop. Adjust the drawbar height so it will enter the coupler mouth. Back in slowly to automatically lock the coupler to the drawbar.



**DO NOT** damage the coupler or its components. Be particularly careful with the drawbar when coupling and uncoupling.

4. Check that the coupler jaw is closed and locked (latch XA-381-2 is fully towards the trailer) and the secondary lock is engaged (lever (A) is fully towards mounting base).



Other steps and inspections are also required. Consult OSHA and D.O.T. regulations and American Trucking Association for complete coupling and uncoupling procedures. These cover items such as cargo securement, brakes, lights, safety chains, and other important requirements.

#### **MAINTENANCE:**

For proper performance, every 30,000 miles or 3 months – whichever comes first, perform the following.

1. Clean and check for proper operation. Inspect for worn, damaged or missing parts. Replace as required using only Holland parts.
2. Inspect, in particular, the coupling contact area. Replace when wear exceeds 1/8" (.125") from the original surface profile.
3. Regularly lubricate all pivot points with a light oil lubricant.
4. Check mounting fasteners for proper torque.

## GENERAL INFORMATION:

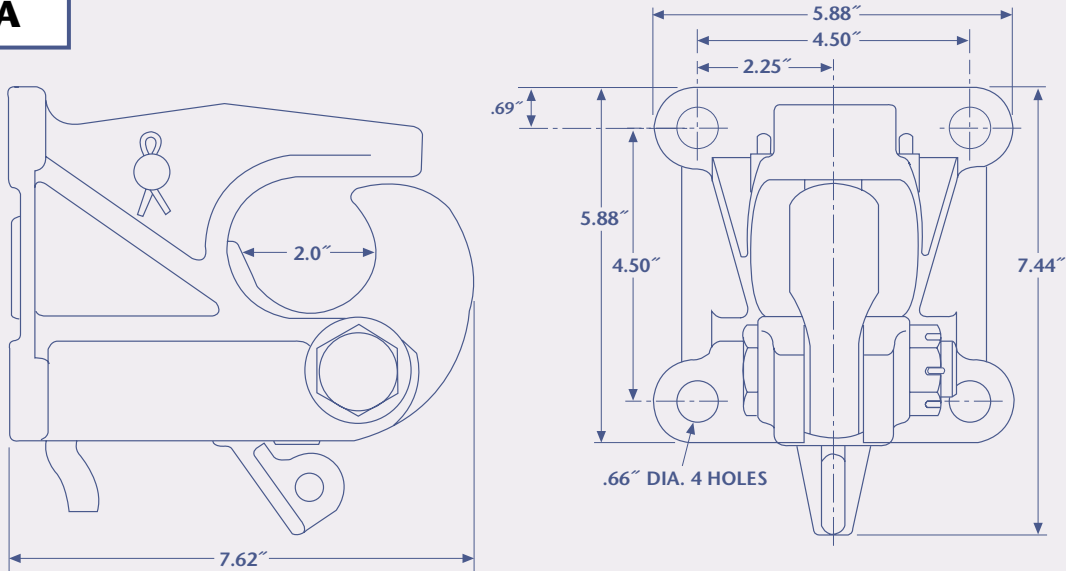
1. Do not modify or add to the product.
2. Wear safety goggles during installation and servicing.
3. Never strike any part of the item with a steel hammer.
4. Do not weld on this product, other than as directed for installation, without written consent from the factory.

This product is covered by Holland's Commercial Products Warranty. Holland reserves the right, without giving prior notice, to change specifications and dimensions as designs are altered or improved.

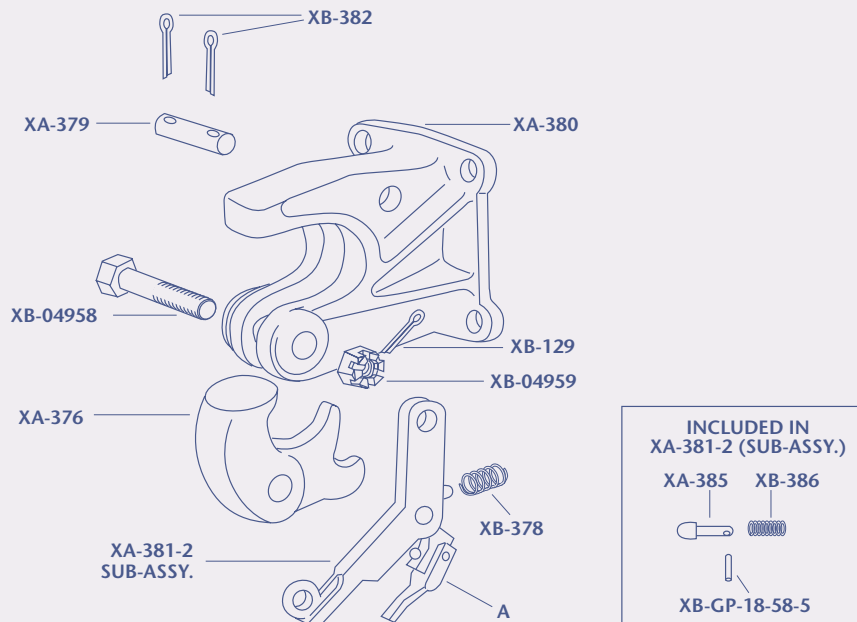


This equipment must not be used or maintained in a careless manner.

### CP-380-A



**ALL DIMENSIONS SHOWN ARE NOMINAL**



**UNIDENTIFIED PARTS ARE NOT AVAILABLE AS SERVICE PARTS**

Copyright © October 2000 • The Holland Group, Inc.



#### Holland Hitch Company Divisions:

Holland, MI  
Whitehouse Station, NJ  
Denmark, SC  
Wylie, TX  
Milpitas, CA  
Phone: 888-396-6501  
Fax: 800-769-3299

#### Holland Binkley Co.

Warrenton, MO  
Phone: 636-456-3455  
Fax: 636-456-6792

#### Holland Binkley Co. Axle Products Division

Delphos, OH  
Phone: 419-692-6015  
Fax: 419-692-0503

#### Holland Neway International, Inc.

Muskegon, MI  
Phone: 231-773-3271  
Fax: 231-766-3893

#### Holland International, Inc.

Holland, MI  
Phone: 616-396-6501  
Fax: 616-396-1511

#### Holland Hitch of Canada, Ltd.

Woodstock, Ontario • Canada  
Phone: 519-537-3494  
Fax: 800-565-7753

#### Holland Hitch Western, Ltd.

Surrey, British Columbia • Canada  
Phone: 604-574-7491  
Fax: 604-574-0244

#### Holland Equipment, Ltd.

Norwich, Ontario • Canada  
Phone: 519-863-3414  
Fax: 519-863-2398