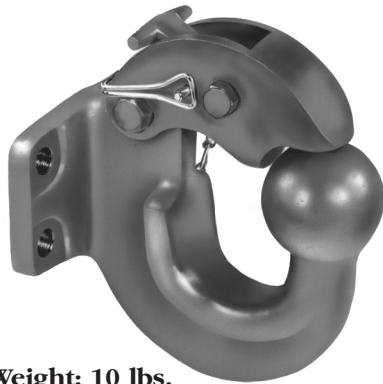




PH-16-BA

PH-16-BA SPECIFICATIONS



Weight: 10 lbs.



WARNING

Maintain adequate vertical (tongue) load to properly control the trailer (generally 10% of the gross trailer weight), but do not exceed the above rated capacities.

TOWING APPLICATIONS:

Trailers and equipment designed for over-the-road towing, within the stated capacities. For off-road applications, reduce the capacities above by 25%, and use in conjunction with a swivel-type drawbar. This pintle hook/ball hitch is well suited for use in the utility and construction industries.

DRAWBAR EYE/BALL HITCH DIMENSIONS:

2.38" to 3" I.D. with 1.25" to 1.63" diameter section, 2.31" SAE J684 ball hitch coupler.

MOUNTING:

1. Use a mounting structure of sufficient strength to support the rated capacity of the pintle hook in accordance with SAE J849 and SAE J847, respectively.
2. Use the hole pattern described on the reverse.
3. Use (4) .5" grade 8 fasteners, properly tightened.

OPERATING INSTRUCTIONS (PINTLE HOOK):

1. Before operating, inspect for proper operation, worn, damaged or missing parts, and a secure mounting. Correct as required before use.
2. Open latch by removing latch pin (A), pull up on lock (B) while lifting the latch (C).
3. Position drawbar eye over the horn of the pintle hook and lower into place.



WARNING

DO NOT damage the latch. Be particularly careful with the drawbar when coupling and uncoupling.

4. Push the latch closed and insert the latch pin (A).



Rigid type pintle hook /2.31" ball hook.

CAPACITY – Pintle Hook:

3,800 lbs. Maximum Vertical Load

19,000 lbs. Maximum Gross Trailer Weight

CAPACITY – 2.31" Ball Hitch:

10,000 lbs. Maximum Gross Trailer Weight

Meets SAE J684 Class 4 Standards in a 2.31" Ball

SAE J847 Information:

Type I - not applicable. Type II - 20,000 lbs.



WARNING

Other steps and inspections are also required. Consult D.O.T. Regulations and American Trucking association for complete coupling and uncoupling procedures. These cover items such as cargo securement, brakes, lights, safety chains, and other important requirements.

OPERATING INSTRUCTIONS (BALL HITCH):

1. Before operating, inspect for proper operation, worn, damaged or missing parts and a secure mounting. Correct as required before use.
2. Open latch by removing latch pin (A), pull up on lock (B) while lifting latch (C).
3. Replace latch pin (A) in the hole to retain latch in open position.
4. Position ball coupler over the 2.31" ball and lock into place, following the instructions of the coupler manufacturer. Be sure coupler size matches ball size.

MAINTENANCE:

For proper performance, the following maintenance steps should be performed every 30,000 miles or 3 months, whichever comes first.

1. Clean and check for proper operation. Inspect for worn, damaged or missing parts. Replace only with Holland parts.
2. Inspect, in particular, the coupling contact areas. Replace when wear exceeds 1/8" (.125") from the original surface profile.
3. Regularly lubricate latch and lock pivots with a light oil lubricant.
4. Check the mounting fasteners for proper torque.

GENERAL INFORMATION:

1. Do not modify or add to the product.
2. Wear safety goggles during installation and removal.
3. Never strike any part of the item with a steel hammer.
4. Do not weld on this product without written consent from the factory.

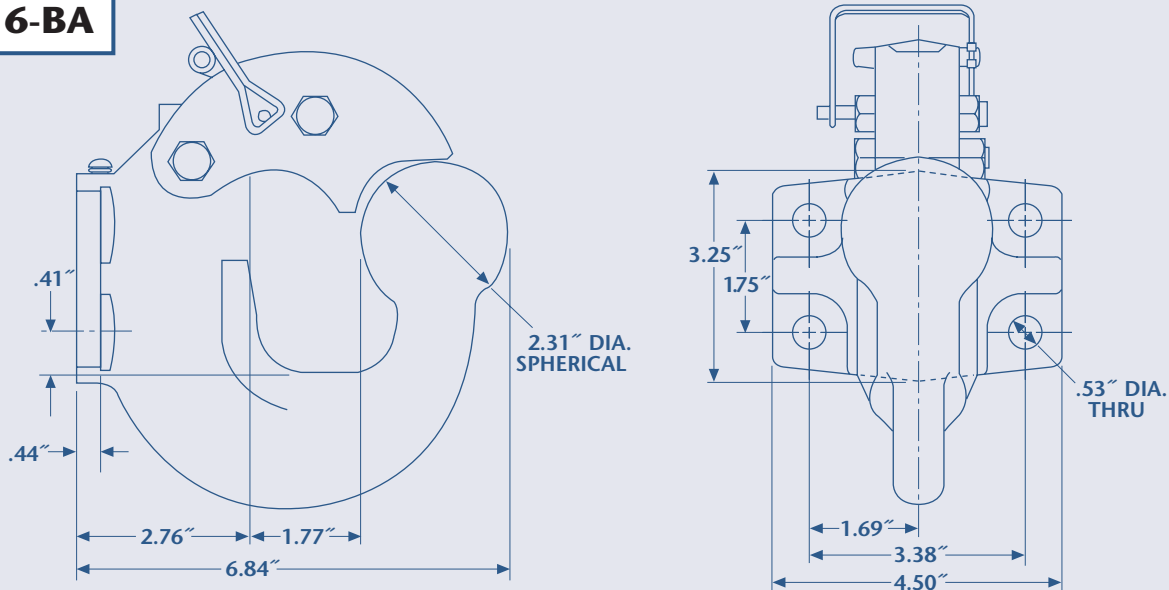
This product is covered by Holland's Commercial Products Warranty. Holland reserves the right, without giving prior notice, to change specifications and dimensions as designs are altered or improved.



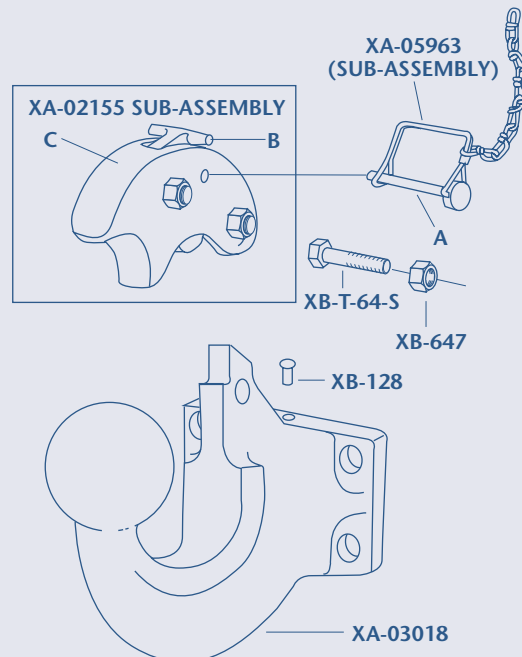
WARNING

This equipment must not be used or maintained in a careless manner.

PH-16-BA



ALL DIMENSIONS SHOWN ARE NOMINAL



Copyright © February 2001 • The Holland Group, Inc.

Holland Hitch Company Divisions:

Holland, MI
Whitehouse Station, NJ
Denmark, SC
Wylie, TX
Milpitas, CA
Phone: 888-396-6501
Fax: 800-769-3299

Holland Binkley Co.

Warrenton, MO
Phone: 636-456-3455
Fax: 636-456-6792

Holland Binkley Co. Axle Products Division

Delphos, OH
Phone: 419-692-6015
Fax: 419-692-0503

Holland Neway International, Inc.

Muskegon, MI
Phone: 231-773-3271
Fax: 231-766-3893

Holland International, Inc.

Holland, MI
Phone: 616-396-6501
Fax: 616-396-1511

Holland Hitch of Canada, Ltd.

Woodstock, Ontario • Canada
Phone: 519-537-3494
Fax: 800-565-7753

Holland Hitch Western, Ltd.

Surrey, British Columbia • Canada
Phone: 604-574-7491
Fax: 604-574-0244

Holland Equipment, Ltd.

Norwich, Ontario • Canada
Phone: 519-863-3414
Fax: 519-863-2398