



# PH-35

## PH-35 SPECIFICATIONS



Weight: 15 lbs.



**Swivel Type Pintle Hook. Swivel action provides torsional relief at the coupling.**

**3,600 lbs. Maximum Vertical Load**  
**18,000 lbs. Maximum Gross Trailer Weight**

**SAE J847 Information:**

Type I - not applicable. Type II - 18,000 lbs.

### IMPORTANT SAFETY INFORMATION

Maintain adequate vertical (tongue) load to adequately control the trailer (generally 10%), but do not exceed the capacity ratings at right.

This equipment must not be used or maintained in a careless manner.

### DURING OPERATION

1. Be sure the drawbar size is compatible with the coupling device on the tow vehicle.
2. Do not damage the latch. Be particularly careful during coupling and uncoupling.
3. Inspect the coupling device on the tow vehicle for proper operation. Do not use any coupling device that does not operate properly.
4. Other steps and inspections are also required. Consult OSHA and D.O.T. regulations and American Trucking Association for complete coupling and uncoupling procedures. These cover items such as cargo securement, brakes, lights, safety chains, and other important requirements.

### GENERAL INFORMATION:

1. Do not modify or add to the product.
2. Wear safety goggles during installation and removal.
3. Never strike any part of the item with a steel hammer.
4. Do not weld on this product.

This product is covered by Holland's Commercial Products Warranty. Holland reserves the right, without giving prior notice, to change specifications and dimensions as designs are altered or improved.

### TOWING APPLICATIONS:

Trailers and equipment designed for over-the-road towing within the stated capacities. Use **ONLY** with a non-swivel type drawbar. For off-road applications, reduce the above capacities by 25%. This pintle hook is well suited for use in the utility and construction industries.

### DRAWBAR EYE DIMENSIONS:

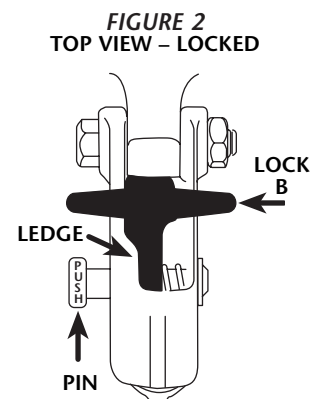
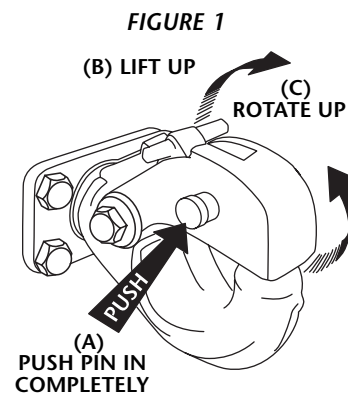
2" to 3" I.D. with 1.25" to 1.63" diameter section.

### MOUNTING:

1. Use a mounting structure of sufficient strength to support the rated capacity of the pintle hook in accordance with SAE J849 and SAE J847, respectively.
2. Use the hole pattern described on the reverse.
3. Remove cotter pin (XB-773), nut (XB-T-20-2), washer (XA-T-88), nuts (XB-758), lock washers (XB-T-45-1), bolts (XB-T-89) and both mounting brackets (XA-T-61-SF and XA-T-61-SR).
4. Install mounting brackets using bolts, lock washers, and nuts provided. Be sure the front and rear mounting brackets are in the proper position, and that the bolts are properly tightened.
5. Install pintle, washer, and nut. Tighten nut to 20-25 ft-lbs torque, then back off as required to insert the cotter pin in the shank. Install and spread cotter pin.

### OPERATING INSTRUCTIONS:

1. Before operating, inspect for proper operation; worn, damaged, or missing parts; and a secure mounting. Correct as required before use.
2. To open latch, push spring-loaded pin (A) in until lock (B) clears the ledge of the latch (C). Lift lock (B) up until it clears the pintle body. Rotate latch (C) up to open (see **FIGURE 1**).



**OPERATING INSTRUCTIONS** *cont.:*

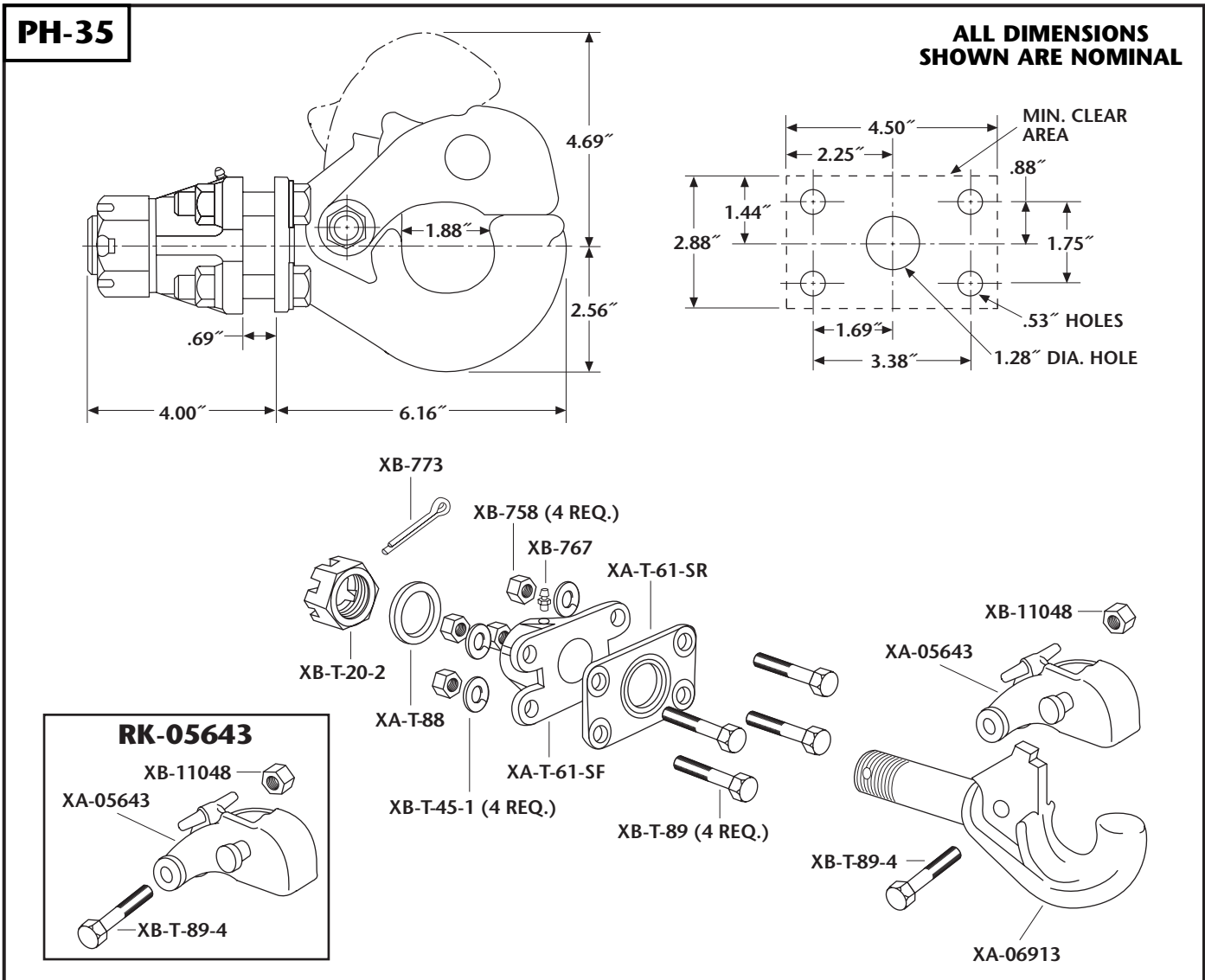
3. Position drawbar eye over the horn of the pintle and lower into place.
4. To close, rotate the latch down until it locks. Check to be sure the lock (B) has returned to its locked position under the ledge of the latch (see **FIGURE 2**).

**MAINTENANCE:**

For proper performance, the following maintenance steps should be performed every 30,000 miles or 3 months, whichever comes first.

1. Clean and check for proper operation. Inspect for worn, damaged or missing parts. Replace as required using only Holland parts.

2. Inspect, in particular, the coupling contact area and periodically disassemble to inspect for wear on the shank and mounting brackets. Replace any component when wear exceeds  $\frac{1}{8}$ " (0.125") from the original surface profile.
3. Lubricate latch and lock pivots with a light oil lubricant. Apply a small quantity of grease through the grease fitting in the mounting bracket.
4. Check the mounting fasteners for proper torque. Retighten nut (XB-T-20-2) as instructed in Step 5, "Mounting," above.



**GO THE DISTANCE.**

Copyright © January 2007 • The Holland Group, Inc.

**Holland USA, Inc. Facilities:**  
 Dumas, AR      Muskegon, MI  
 Holland, MI      Warrenton, MO  
 Monroe, NC      Wylie, TX  
 Ph: 888-396-6501      Fax: 800-356-3929

**Holland International, Inc.**  
 Holland, MI  
 Phone: 616-396-6501  
 Fax: 616-396-1511

**Holland Hitch of Canada, Ltd.**  
 Woodstock, Ontario • Canada  
 Phone: 519-537-3494  
 Fax: 800-565-7753

**Holland Equipment, Ltd.**  
 Norwich, Ontario • Canada  
 Phone: 519-863-3414  
 Fax: 519-863-2398

**Holland Hitch of Canada, Ltd.**  
 Surrey, British Columbia • Canada  
 Phone: 604-574-7491  
 Fax: 604-574-0244

www.thehollandgroupinc.com