



COUPLER PRODUCTS

LATCH REPLACEMENT PROCEDURES

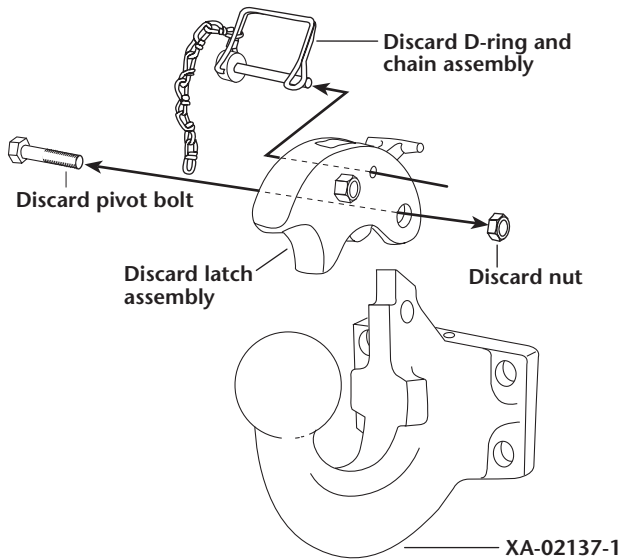
(PH-16-B shown)



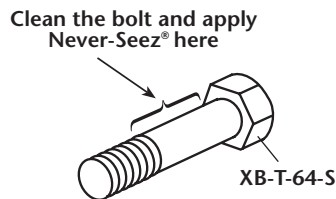
RK-02155

For PH-16B and PH-16-BA

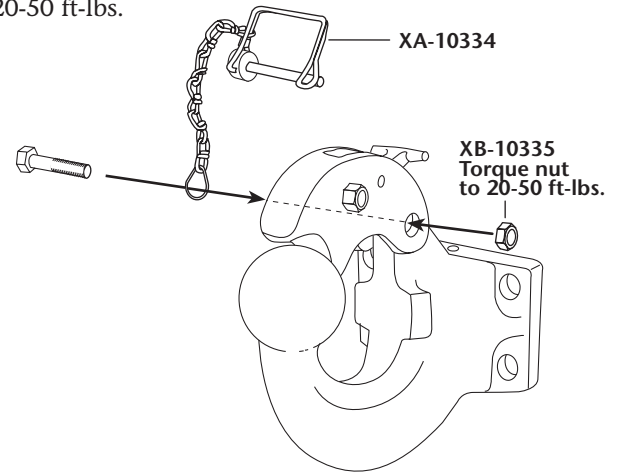
1. Remove and discard the nut, pivot bolt, D-ring and chain assembly, and latch assembly.



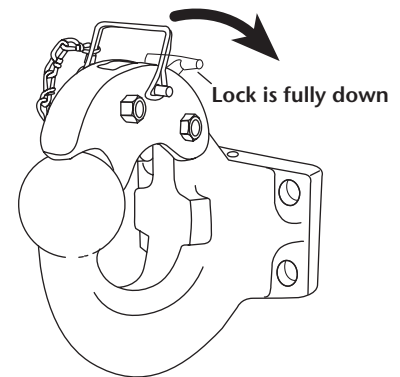
2. Apply Never-Seez® to entire shaft of the new pivot bolt (not on threads).



3. Install the new latch assembly using a new pivot bolt, D-ring and chain assembly, and nut. Torque the nut to 20-50 ft-lbs.



4. Check the latch for proper operation. When closed, the lock must be fully down. Install the D-ring into the hole in the side of the latch, as shown. Snap the spring over the D-ring and pin to secure.



Copyright © April 2002 • The Holland Group, Inc.

Holland USA, Inc. Facilities:

Denmark, SC Muskegon, MI
 Dumas, AR Warrenton, MO
 Holland, MI Whitehouse Station, NJ
 Milpitas, CA Wylie, TX

Ph: 888-396-6501 Fax: 800-356-3929

Holland International, Inc.

Holland, MI
 Phone: 616-396-6501
 Fax: 616-396-1511

Holland Hitch of Canada, Ltd.

Woodstock, Ontario • Canada
 Phone: 519-537-3494
 Fax: 800-565-7753

Holland Equipment, Ltd.

Norwich, Ontario • Canada
 Phone: 519-863-3414
 Fax: 519-863-2398

Holland Hitch Western, Ltd.

Surrey, British Columbia • Canada
 Phone: 604-574-7491
 Fax: 604-574-0244