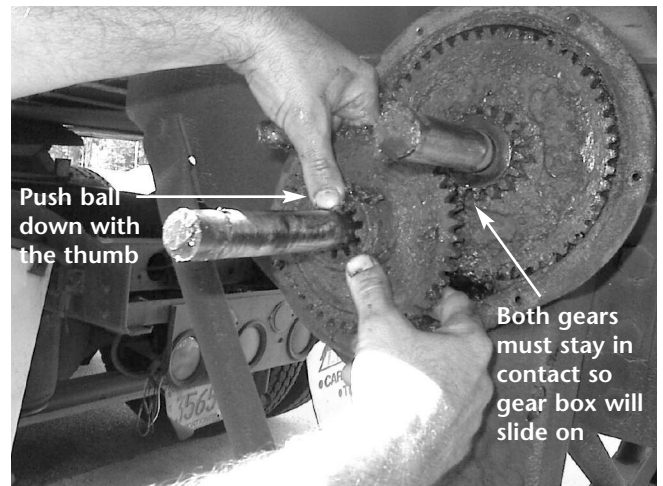




Fast Gear Landing Gear Input Gear Set Replacement

REPAIR PROCEDURE

1. Remove all paint, rust and any burrs from shift shaft and output shaft nearest to the gear box cover. Use a file to remove burrs at the hole for the crank handle (cross shaft). This is necessary for proper removal and installation of the gearbox cover.
2. Remove the screws holding the gear box cover.
3. Tap the gear box cover several times around the edges to break cover loose from the gasket.
 - a. There will be a noticeable difference in sound when cover is loose. This will also minimize damage to the gasket and cover.
 - b. If the gasket is damaged during removal replace with XB-LG0891.
4. Remove the gear box cover.
5. When the gear box cover is removed, the shift ball will usually fly out of the hole and lodge in the grease. This ball must be found and removed from the gearbox (using a magnet may help find the ball in the grease).
 - a. If the ball is stuck in the shaft hole, drill a hole on the opposite side (180°) of the hole, using a 3/16" drill bit. Use a small punch to push the ball out.
6. Remove the spring from the hole in the shaft. Inspect the spring and the ball removed in the previous step. Replace these parts if they are heavily corroded. See parts diagram on page 2.
7. Remove the high input gear from the new input gear assembly. Place the spring and ball into the hole provided. Then push the high input gear onto the shaft so that it is over the ball and spring.
 - a. Remember to hold the high input gear because it is floating, and if it slides off the ball and spring, the ball will fly out.
8. Remove excess grease from the gear box and coat any uncoated metal parts with grease. Lubricate the ball and spring with grease.
 - a. Repack the gearbox with 1lb of Cato Low Temp Grease NO. 2, formula code 5213 or equivalent.



9. Place the new input gear assembly into the inner gearbox housing so that it is always in contact with the output gear assembly.
10. Install the gearbox gasket (new if needed)
11. Install the outer gearbox cover carefully until approximately 3/8" gap remains between the inside and outside covers. Check to ensure proper alignment of the gasket and cover. Apply a fast, steady pressure to the outer gearbox cover, to seat the ball in the cover, and install two screws to hold the cover in place.

continued

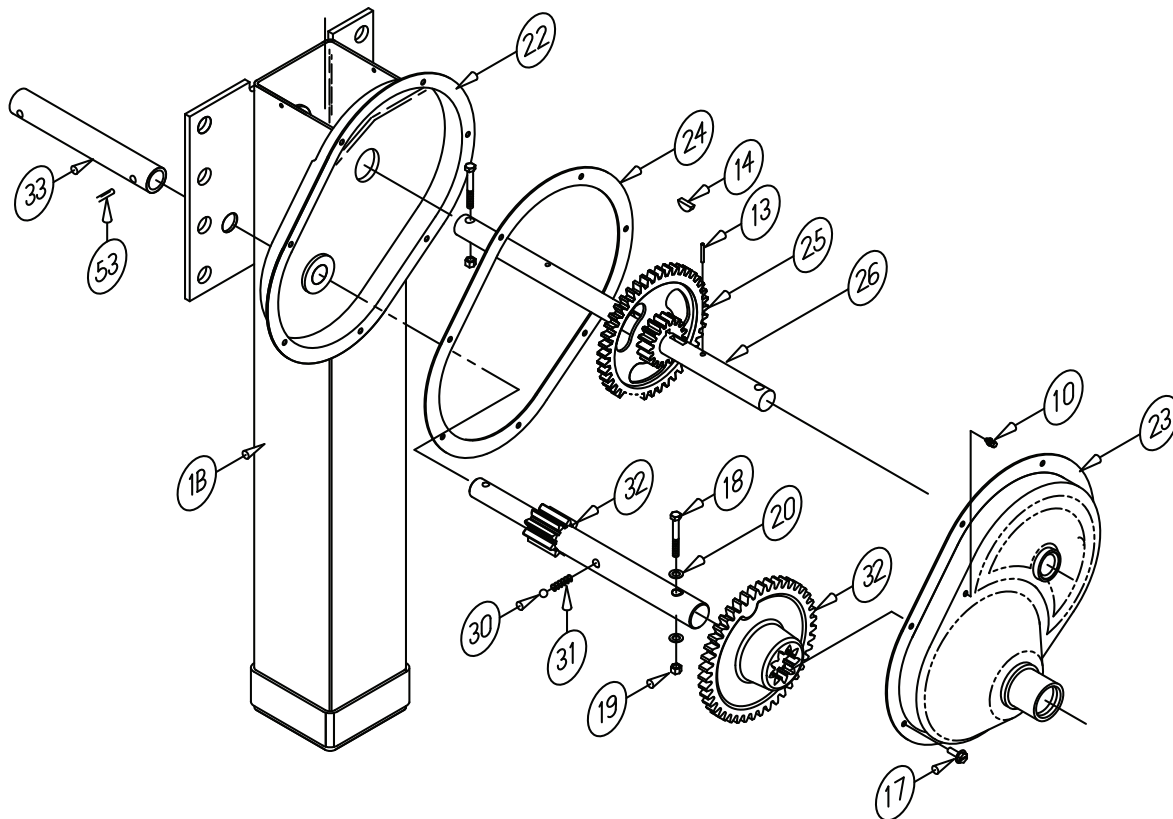
12. Operate the leg up and down with the shift shaft in the out position, to assure the proper operation of the leg and that the shift shaft doesn't shift while cranking.
13. Install the remaining screws in the gearbox. Do not use impact to install screws in cover; it can strip the holes out. Torque screws to 65-90 inch-pounds.
14. Install the crank handle (cross shaft) taking care not to tighten the nut against the handle (cross shaft) (use with lock nut or double nuts). The crank handle (cross shaft) must be able to float on the shaft.

Kit Part #RK-10980 Includes:

LG2465-01, input high gear
 LG2463-01, input low gear shaft

Individual Parts

Item	Description	Qty	Part No.
10	Grease Fitting, 1/4-38 straight	1	XB-GRF-022-16
13	Spring pin, 1/4 x 1-1/2	1	XB-SP-014-27
14	Woodruff key, 1/4 x 7/8	1	XB-KEY-018-02
17	Screw, thread-forming, 1/4-20 x 1/2	7	XB-ST5-008-11
18	Bolt, 3/8-16 x 2 -1/4	1	XB-HHC-050-42
19	Nut, 3/8-16	1	XB-SLN-012-04
20	Washer, 3/8	2	XB-PW-016-03
22	Gearbox half assembly, inside	1	LG0945-100
23	Gearbox half assembly, outside	1	LG0944-100
24	Gasket	1	XB-LG0891
25	Gear, output	1	LG0936-51
26	Shaft, output, universal, 51000	1	LG2147
26	Shaft, output, universal, 5000	1	LG2147-5
30	Ball, stainless	1	XB-BAL-023-07
31	Spring, compression	1	XB-SPG-020-36
32	Kit, Fast Gear (consists of high input gear and input gear- shaft assembly, note both parts must be changed together.	1	RK-10980
33	Extension shaft	1	LG2462
53	Pin, groove, 1/4 x 1.125	1	XB-GP-052-49



SAF-HOLLAND USA, Inc.
 888.396.6501 Fax 800.356.3929

SAF-HOLLAND Canada Limited
 519.537.3494 Fax 800.565.7753
 Western Canada
 604.574.7491 Fax 604.574.0244

SAF-HOLLAND International, Inc.
 616.396.6501 Fax 616.356.1511