



MECHANICAL SLIDERS

SERVICE BULLETIN

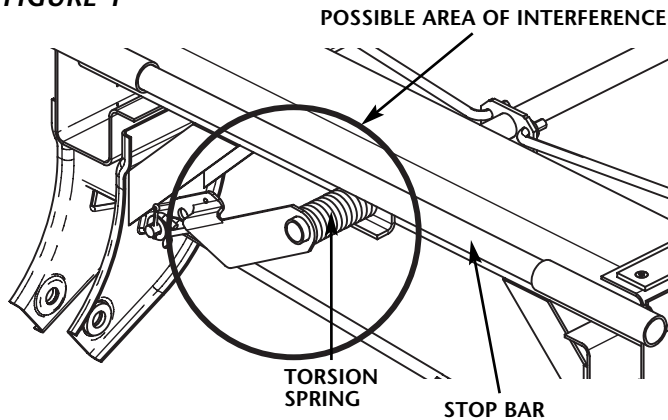
Modified Front Stop Bar for Hutch Rails UltraLite 2, DuraSystem, and Lite-Slide IV Mechanical Trailer Suspensions

INTRODUCTION

When using SAF-HOLLAND mechanical slider suspensions with Hutch rails a special or modified front stop bar must be used. Using the standard size stop bar for a Hutch rail will cause an interference issue with the torsion spring on the pin release mechanism (**FIGURE 1**).

A stop bar kit can be purchased from SAF-HOLLAND. See part numbers in **TABLE 1**, or the trailer OEM is free to manufacture a stop bar to their specification provided it allows for clearance of the torsion spring.

FIGURE 1



SAFETY INSTRUCTIONS

General Safety Instructions

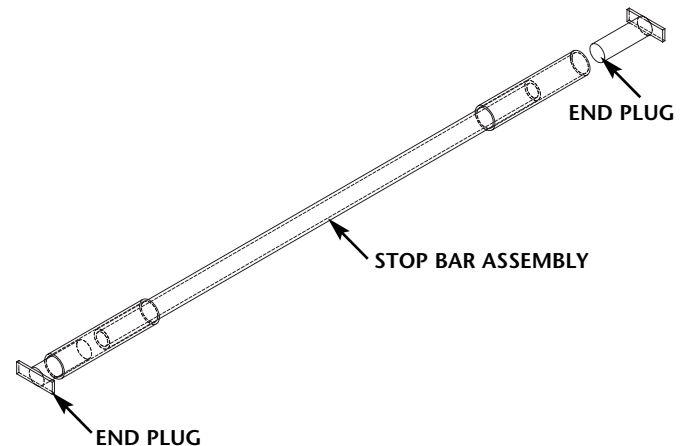
1. **Keep Work Area Clean.** Cluttered areas and benches invite accidents.
2. Keep fingers away from all potential pinch points in the suspension.
3. All suspension maintenance must be performed by a qualified service technician using proper tools and safe procedures.
4. **Use Safety Goggles.** Glasses or goggles not in compliance with ANSI or CSA can cause serious injury when damaged or broken.
5. **Wear Proper Apparel.** Do not wear loose clothing, gloves, neckties, jewelry (rings, wristwatches, etc.) that can get caught in moving parts. Non-slip footwear is recommended.

STOP BAR KIT

TABLE 1

Kit Description

DESCRIPTION	KIT PN
Stop Bar Kit - 42" Slider Width	SPK0059
Stop Bar Kit - 48" Slider Width	SPK0058



STOP BAR INSTALLATION PROCEDURE

Hutch Style Body Rails

1. Insert Stop Bar Assembly into desired holes on body rails
FIGURE 2.
2. Leave approximately 0.50" of the assembly sticking out of each side of the rail.
3. Insert End Plug and weld per **FIGURE 3.**

FIGURE 2

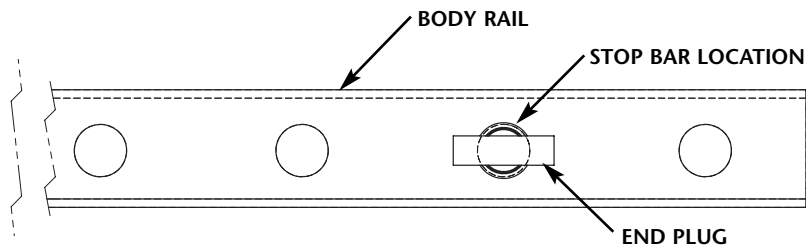
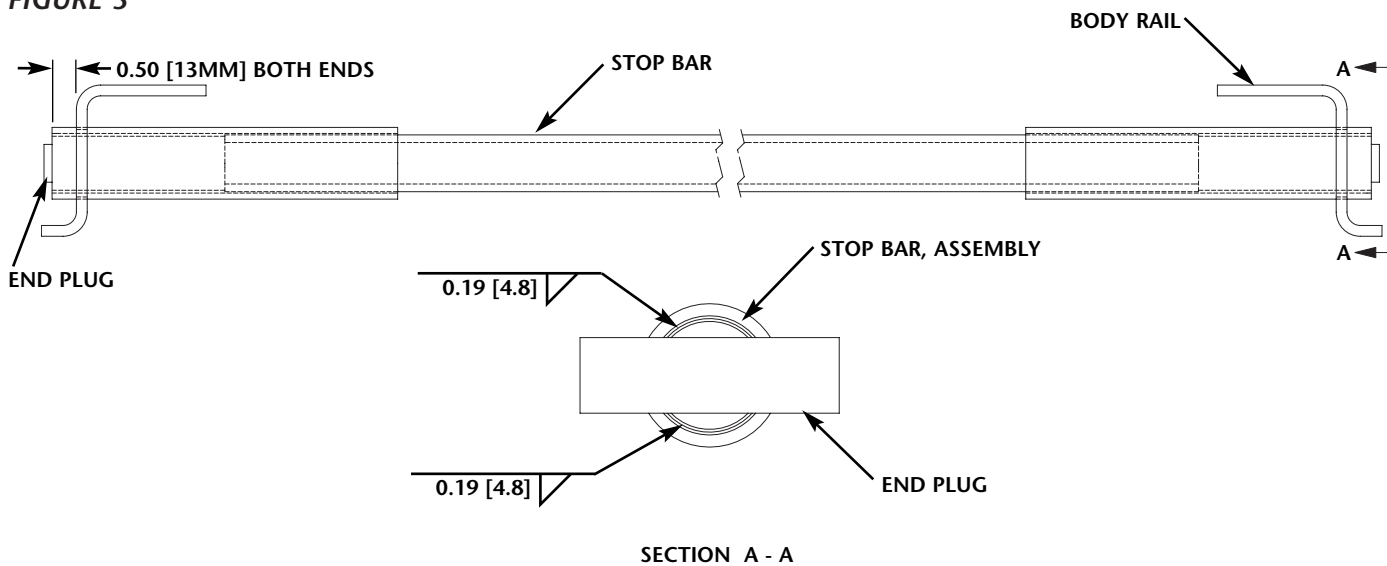


FIGURE 3



SAF-HOLLAND USA, Inc.
888.396.6501 Fax 800.356.3929

SAF-HOLLAND Canada Limited
519.537.3494 Fax 800.565.7753
Western Canada
604.574.7491 Fax 604.574.0244

SAF-HOLLAND International, Inc.
616.396.6501 Fax 616.356.1511