

EN



HOLLAND Fifth Wheels

For Mercedes-Benz Trucks



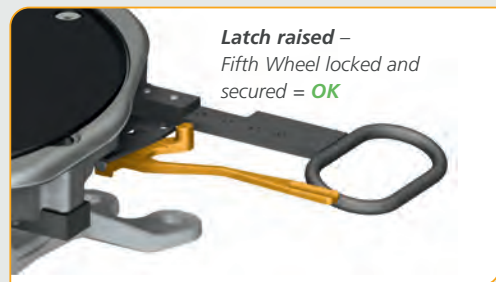
SK-S 36.20 SERIES SPHEROIDAL GRAPHITE CAST IRON 20T FIFTH WHEEL



All of the fifth wheels in the SK-S 36.20 range from HOLLAND are particularly light thanks to their design and the use of spheroidal graphite cast iron, and are equipped with a safety latch that allows coupling or uncoupling with one hand.

The safety latch ensures at first glance a clear visual indication, whether the fifth wheel is securely locked or not: if the latch is in the „raised“ or „lowered“ position. Hence easily and safely avoiding mis-couples.

SIMPLE AND DECISIVE VISUAL SAFETY INDICATION!

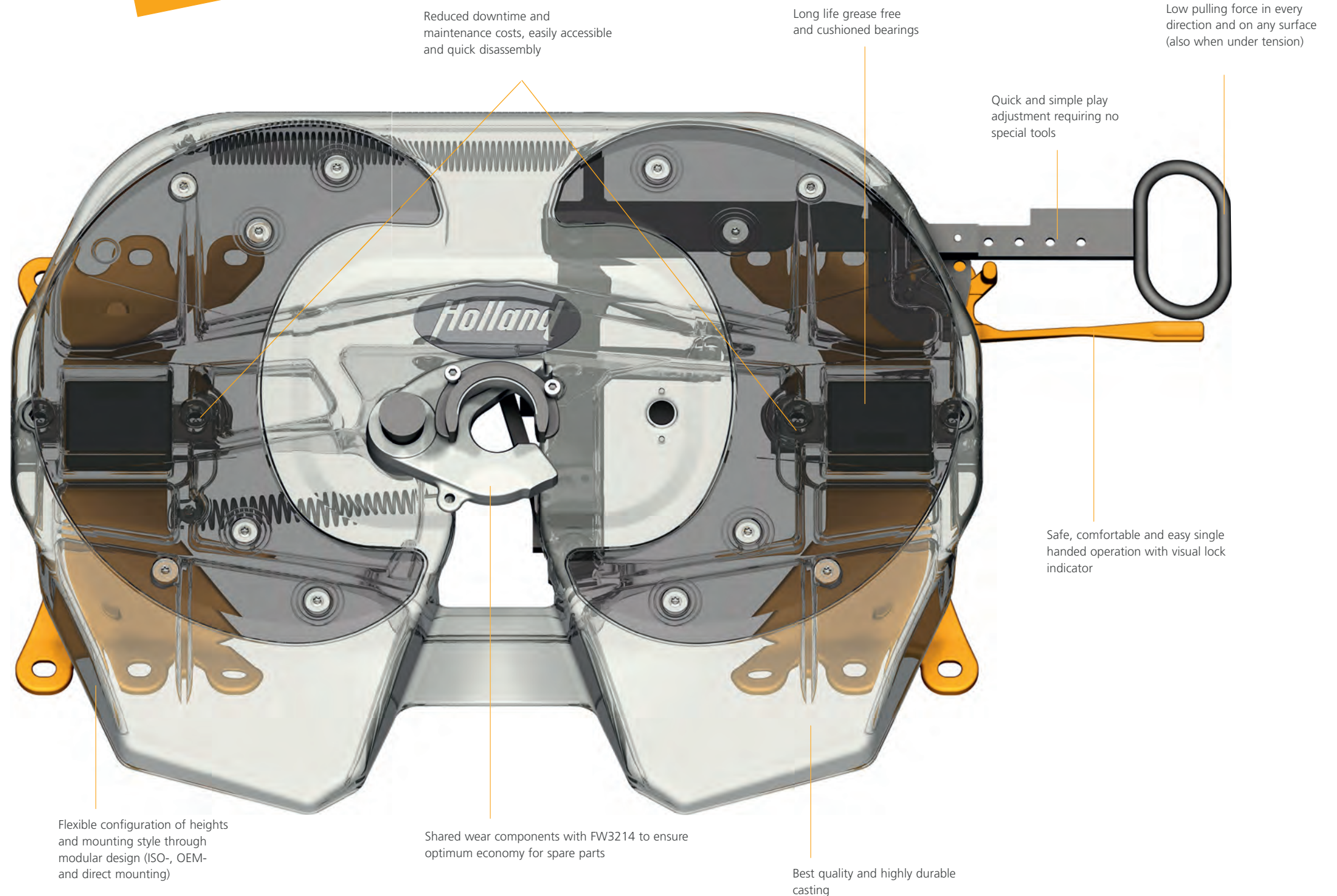


Latch raised –
Fifth Wheel locked and
secured = **OK**



Latch lowered –
Fifth Wheel open = **DANGER**

LIGHTWEIGHT
117 KG
(150 MM)



Reduced downtime and maintenance costs, easily accessible and quick disassembly

Long life grease free and cushioned bearings

Low pulling force in every direction and on any surface (also when under tension)

Quick and simple play adjustment requiring no special tools

Safe, comfortable and easy single handed operation with visual lock indicator

Flexible configuration of heights and mounting style through modular design (ISO-, OEM- and direct mounting)

Shared wear components with FW3214 to ensure optimum economy for spare parts

Best quality and highly durable casting



ALWAYS A SAFE COUPLE – MERCEDES-BENZ AND SAF-HOLLAND

You must always be able to 100% rely on your fifth wheel, as it belongs to the most important components on a truck. According to MERCEDES-BENZ customer specific requirements, SAF-HOLLAND develops and manufactures innovative and safe premium quality products. Precise manufacturing processes and stringent controls ensure that the demanding quality standards of both partners are fulfilled.

Together with MERCEDES-BENZ, SAF-HOLLAND individually caters for the most diverse customer requirements. Whether for light commercial, armoured, or special transport vehicle – SAF-HOLLAND fifth wheels provide the perfect solution for every transport task. The exceptional low system weight convinces with a correspondingly long service life and exemplary low maintenance costs.

SK-S 36.20

20 T



The lightweight, spheroidal graphite cast iron 20t fifth wheel

- Up to 33 kg lighter, reliable and robust
- Safe single-handed operation, automatic safety lock
- Simple wear adjustment
- Permanent, maintenance-free bearings
- Optimised lubrication channels for effective grease flow
- Connections for central lubrication
- Optionally available with RECOSS® system ex works
- Approved for forced steering

Imposed load: 20,000 kg (2")
D-value: 152 kN
Overall heights: 128*, 150, 185, 225, 250 mm
ECE test no.: E1 55R-01 0218

*Angle of articulation according to ISO 1726 with 128 mm pedestals only guaranteed in conjunction with the MP 631, 12 mm mounting plate, from SAF-HOLLAND

**optionally with straight unlocking handle

Part	Mercedes-Benz Order Code			Mercedes-Benz Part No.	Weight kg Fifth Wheel	SAF-HOLLAND Order No.
	Type	Version	Height			
SK-S 36.20 BH 128*	Available on request			–	116	662 129 046
SK-S 36.20 BH 150**	Q5S	Q4X	Q4I	A0013152192	117	662 129 038
SK-S 36.20 BH 185**	Q5S	Q4X	Q4K	A0003152992	119	662 129 048
SK-S 36.20 BH 225	Available on request			–	122	662 129 031
SK-S 36.20 BH 250	Available on request			–	132	662 129 049

FW3214-W (LOW MAINTENANCE)

14 T



The first 14t chassis-integrated fifth wheel

- Weight- and load-optimised for more potential payload
- Tuned exactly to the tractor unit
- Use of load-optimised and wear-optimised slide plates
- Low maintenance and particularly service-friendly
- Safe and comfortable single-handed operation
- Available for Mercedes-Benz Actros and Antos with wheelbase 3,700 mm with coupling point 600 mm
- Available with 1-point automatic grease cartridge for lubrication of the safety lock

Imposed load: 14,000 kg (2")
D-value: 104 kN
Overall heights: 165, 190, 225 mm
ECE test no.: E11 55R-01 7836

Part	Mercedes-Benz Order Code			Mercedes-Benz Part No.	Weight kg Fifth Wheel	SAF-HOLLAND Order No.
	Type	Version	Height			
FW3214-W BH 165	Q4Y	Q4Z	Q4J	–	100	Only available via MB
FW3214-W BH 190	Q4Y	Q4Z	Q4L	–	102	Only available via MB
FW3214-W BH 225	Q4Y	Q4Z	Q4P	–	104	Only available via MB

SK-S 36.20 W (LOW MAINTENANCE)

20 T



The lightweight, low maintenance spheroidal graphite cast iron 20t fifth wheel

- Up to 33 kg lighter, designed for highway application
- Less grease consumption
- Easily replaceable low friction wear plates
- Safe single-handed operation, automatic safety lock
- Simple wear adjustment
- Permanent, maintenance-free bearings
- Optionally available with RECOSS® system ex works
- Approved for forced steering
- Available with 1-point automatic grease cartridge for lubrication of the safety lock

Imposed load: 20,000 kg (2")
D-value: 152 kN
Overall heights: 128*, 150, 185, 225, 250 mm
ECE test no.: E1 55R-01 0218

*Angle of articulation according to ISO 1726 with 128 mm pedestals only guaranteed in conjunction with the MP 631, 12 mm mounting plate, from SAF-HOLLAND

**optionally with straight unlocking handle

Part	Mercedes-Benz Order Code			Mercedes-Benz Part No.	Weight kg Fifth Wheel	SAF-HOLLAND Order No.
	Type	Version	Height			
SK-S 36.20 W BH 128*	Available on request			-	117	662 131 011
SK-S 36.20 W BH 150**	Q5S	Q4Z	Q4I	A0013152092	118	662 131 088
SK-S 36.20 W BH 185**	Q5S	Q4Z	Q4K	A0003152692	121	662 131 013
SK-S 36.20 W BH 225	Available on request			-	124	662 131 042
SK-S 36.20 W BH 250	Available on request			-	134	662 131 014

SK-S 36.20 RECOSS (SENSORS)

20 T



The Safety Sensor System for the SK-S 36.20 fifth wheel REMote COntrolled Safety System

- More safety due to visual and acoustic indication in cockpit
- More convenience due to monitoring of entire coupling process from the cabin

Imposed load: 20,000 kg (2")
D-value: 152 kN
Overall heights: 128*, 150, 185, 225, 250 mm
ECE test no.: E1 55R-01 0218

*Angle of articulation according to ISO 1726 with 128 mm pedestals only guaranteed in conjunction with the MP 631, 12 mm mounting plate, from SAF-HOLLAND

**optionally with straight unlocking handle

Part	Mercedes-Benz Order Code			Mercedes-Benz Part No.	Weight kg Fifth Wheel	SAF-HOLLAND Order No.
	Type	Version	Height			
SK-S 36.20 S BH 128*	Available on request			-	116	662 129 059
SK-S 36.20 S BH 150**	Q6L	Q4X	Q4I	A9613108204	117	662 129 826
SK-S 36.20 S BH 185**	Q6L	Q4X	Q4K	A9613108404	119	662 129 828
SK-S 36.20 S BH 225	Available on request			-	122	662 129 830
SK-S 36.20 S BH 250	Available on request			-	132	662 129 831

SK-S 36.20 NOLUBE

20 T



The lightweight 20t fifth wheel with grease-free NoLube Technology

- Up to 33 kg lighter, designed for highway application
- Easily replaceable low friction wear plates
- Safe single-handed operation
- Automatic safety lock
- Simple wear adjustment
- Permanent, maintenance-free bearings
- Optionally available with RECOSS® system ex works
- Approved for forced steering
- Light and easily replaceable 2 component polymer wear ring
- Lock with unique low friction greaseless NoLube coating

Imposed load: 20,000 kg (2")
D-value: 152 kN
Overall heights: 128*, 150, 185, 225, 250 mm
ECE test no.: E1 55R-01 0218

*Angle of articulation according to ISO 1726 with 128 mm pedestals only guaranteed in conjunction with the MP 631, 12 mm mounting plate, from SAF-HOLLAND

**optionally with straight unlocking handle

Part	Mercedes-Benz Order Code			Mercedes-Benz Part No.	Weight kg Fifth Wheel	SAF-HOLLAND Order No.
	Type	Version	Height			
SK-S 36.20 NoLube BH 128*	Available on request			-	117	662 131 916
SK-S 36.20 NoLube BH 150**	Q5S	Q5A	Q4I	A9613106404	118	662 131 921
SK-S 36.20 NoLube BH 185**	Q5S	Q5A	Q4K	A9613106604	121	662 131 926
SK-S 36.20 NoLube BH 225	Available on request			-	124	662 131 929
SK-S 36.20 NoLube BH 250	Available on request			-	134	662 131 931

SK-S 36.20 WS RECOSS (LOW MAINTENANCE + SENSORS)

20 T



The Safety Sensor System for the SK-S 36.20 fifth wheel REMote COntrolled Safety System

- More safety due to visual and acoustic indication in cockpit
- More convenience due to monitoring of entire coupling process from the cabin

Imposed load: 20,000 kg (2")
D-value: 152 kN
Overall heights: 128*, 150, 185, 225, 250 mm
ECE test no.: E1 55R-01 0218

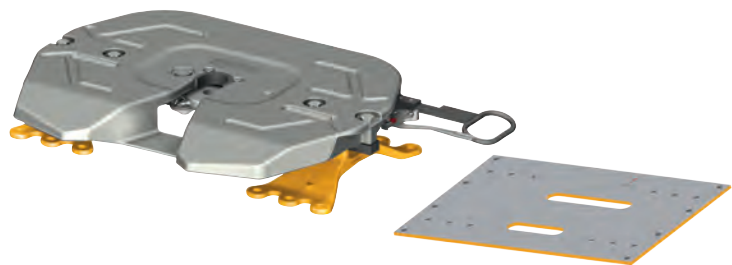
*Angle of articulation according to ISO 1726 with 128 mm pedestals only guaranteed in conjunction with the MP 631, 12 mm mounting plate, from SAF-HOLLAND

**optionally with straight unlocking handle

Part	Mercedes-Benz Order Code			Mercedes-Benz Part No.	Weight kg Fifth Wheel	SAF-HOLLAND Order No.
	Type	Version	Height			
SK-S 36.20 WS BH 128*	Available on request			-	117	662 131 543
SK-S 36.20 WS BH 150**	Q6L	Q4Z	Q4I	A0023154092	119	662 131 544
SK-S 36.20 WS BH 185**	Q6L	Q4Z	Q4K	A9613107904	121	662 131 546
SK-S 36.20 WS BH 225	Available on request			-	124	662 129 548
SK-S 36.20 WS BH 250	Available on request			-	134	662 129 549

SK-S 36.20 WITH MOUNTING PLATE

20 T



The lightweight, spheroidal graphite cast iron 20t fifth wheel

- Significantly reduced system weight, reliable and robust
- Safe single-handed operation, automatic safety lock
- Simple wear adjustment
- Permanent, maintenance-free bearings
- Optimised lubrication channels for effective grease flow

Imposed load: 20,000 kg (2")
D-value: 152 kN
Overall height: 140 mm
ECE test no.: E1 55R-01 0218

*Angle of articulation according to ISO 1726 with 128 mm pedestals only guaranteed in conjunction with the MP 631, 12 mm mounting plate, from SAF-HOLLAND

Part	Mercedes-Benz Order Code			Mercedes-Benz Part No.	Weight kg Fifth Wheel (incl. MP)	SAF-HOLLAND Order No.
	Type	Version	Height			
SK-S 36.20 (BH 140 mm incl. MP*)	Q5N	Q4X	Q4G	A0013153992	176	662 129 057
SK-S 36.20 W (BH 140 mm incl. MP*)	Q5N	Q4Z	Q4G	A9603100204	178	662 131 074
SK-S 36.20 W NoLube (BH 140 mm incl. MP*)	Q5N	Q5A	Q4G	A9613106804	178	662 131 941
SK-S 36.20 S (BH 140 mm incl. MP*)	Q6L	Q4X	Q4G	A9613108804	176,5	662 129 059
SK-S 36.20 WS (BH 140 mm incl. MP*)	Q6L	Q4Z	Q4G	A9613108604	178	662 131 068
SK-S 36.20 WS NoLube (BH 140 mm incl. MP*)	Q6L	Q5A	Q4G	A9613108704	178	662 131 942

SK-S 36.20 H (HEIGHT ADJUSTABLE)

15 T



The established and proven 15t dual height fifth wheel, cast from ductile iron and with automatic lubrication

- Extremely robust and user friendly
- Weight optimised model
- Connections for central lubrication
- Simple wear adjustment
- Automatic safety lock
- Approved for forced steering

Imposed load: 15,000 kg (2")
D-value: 110 kN
Overall heights: 167-267, 167-317, 167-367 mm
ECE test no.: E11 55R-01 1381

Part	Mercedes-Benz Order Code			Mercedes-Benz Part No.	Weight kg Fifth Wheel	SAF-HOLLAND Order No.
	Type	Version	Height			
SK-S 36.20 H/167-267 mm	Available on request			A6633150109	322	662 142 8055
SK-S 36.20 H/167-317 mm	Available on request			A6633150209	326	662 142 8065
SK-S 36.20 H/167-367 mm	Available on request			A6633150309	330	662 142 8075

SK-HD 38.36

36 T



The robust cast steel 36t fifth wheel for heavy duty transport

- Permanent, maintenance-free bearings
- Conversion from 3.5" to 2" and vice versa possible
- Suitable for steering wedge applications

Imposed load: 23,000 kg (2"), 36,000 kg (3.5")
D-value: 162 kN (2"), 260 kN (3.5")
Overall heights: 150, 190 mm
ECE test no.: E11 55R-01 8550 (2"), E11 55R-01 8549 (3.5")

Part	Mercedes-Benz Order Code			Mercedes-Benz Part No.	Weight kg Fifth Wheel	SAF-HOLLAND Order No.
	Type	Version	Height			
SK-HD 38.36 (2") BH 150	Q6S	Q4X	Q4I	A0013156892	183	662 111 085
SK-HD 38.36 (2") BH 190	Q6S	Q4X	Q4L	A0013157092	191	662 111 074
SK-HD 38.36 (3.5") BH 150	Q6T	Q4X	Q4I	A0013156992	182	662 111 065
SK-HD 38.36 (3.5") BH 190	Q6T	Q4X	Q4L	A0013157192	190	662 111 066

YOUR CONTACT



Technical Sales
Europe, Middle East and Africa
Rainer Junker

+49 171 518 4072
 rainer.junker@safholland.com



Technical Sales
Europe, Middle East and Africa
Holger Krell

+49 171 810 4741
 holger.krell@safholland.com

Engineering Your Road to Success

The SAF-HOLLAND Group is one of the leading international manufacturers of suspension-related assemblies and components for trailers, trucks and buses. Our innovative products increase the efficiency, safety and environmental friendliness of commercial vehicles, contribute to the success of our customers. With around 3,000 employees worldwide, we are at the forefront of shaping the future of the transportation industry.



Trailer Axles and
Suspension Systems



Coupling and Lifting
Technologies



Coupling and Lifting
Technologies



Trailer
Telematics



Suspensions for
Trucks and Buses



Suspensions and Components
for Commercial Vehicles



Trailer Axles and
Suspensions Systems

safholland.com

SAF-HOLLAND GmbH

Hauptstraße 26 - 63856 Bessenbach - Germany
Tel +49 6095 301-0 - info@safholland.de