

## Engineering Your Road to Success

The SAF-HOLLAND® Group is one of the leading international manufacturers of suspension-related assemblies and components for trailers, trucks and buses. Our innovative products increase the efficiency, safety and environmental friendliness of commercial vehicles, contribute to the success of our customers. With around 3,000 employees worldwide, we are at the forefront of shaping the future of the transportation industry.



Trailer Axles and  
Suspension Systems



Coupling and Lifting  
Technologies



Brake Solutions &  
Air Valve Technologies



Suspensions and Components  
for Commercial Vehicles



Suspensions for  
Trucks and Buses



Trailer  
Telematics



Coupling and Lifting  
Technologies



Trailer Axles and  
Suspensions Systems

[safholland.com](http://safholland.com)

**SAF-HOLLAND, Inc**  
1950 Industrial Blvd. Muskegon, MI  
Tel 800.876.3929

# Quick Parts Kit Guide

The Popular Service Rebuild Kits for HOLLAND Fifth Wheels, Landing Gear, and SAF Trailer Suspensions





## ORIGINAL PARTS

Preserving the premium performance of your SAF-HOLLAND fifth wheels, axle suspensions, and landing gear requires service parts manufactured with the same original OEM quality as our first fit parts and components. This catalog conveniently provides you with a comprehensive listing of the most popular service parts and kits needed to meet your fleet customer's service needs enabling them to get back on the road to making money.

Stocking the most popular service kits streamlines your inventory control, reduces required shelf space, and simplifies your operation. And most importantly, they ensure you're getting SAF-HOLLAND 100% original quality, original performance, and original reliability. This catalog will assist with quickly leading you to the appropriate kit required. Authorized distributors and dealers can order from one of our Parts Distribution Centers. Fleets can order them through traditional parts sources.

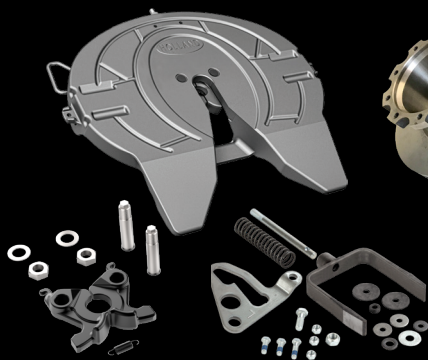
Remember... SAF-HOLLAND Original Parts are OEM quality to ensure peak performance and provide long life to keep your customers on the road.

## ALWAYS SPECIFY ORIGINAL

*Original Quality, Original Performance, Original Reliability*

This catalog is only a portion of all the service parts and kits available from SAF-HOLLAND. Contact one of our helpful customer service representatives at 1-800-876-3929 for assistance.

### ORIGINAL QUALITY



### ORIGINAL PERFORMANCE



### ORIGINAL RELIABILITY



## CONTENTS

|                          |         |
|--------------------------|---------|
| Fifth Wheels.....        | 4 – 9   |
| Landing Gear.....        | 10 – 15 |
| Trailer Suspensions..... | 16 – 21 |
| Air Disc Brakes.....     | 22 – 27 |
| Service Tools.....       | 28 – 31 |

## PRODUCT WEBSITES



[HollandFifthWheels.com](http://HollandFifthWheels.com)  
[SAFDiscBrakeParts.com](http://SAFDiscBrakeParts.com)  
[SAFP89DiscBrakes.com](http://SAFP89DiscBrakes.com)  
[SAFP89PlusDiscBrakes.com](http://SAFP89PlusDiscBrakes.com)  
[ULX40.com](http://ULX40.com)  
[CBX40.com](http://CBX40.com)  
[CBXAeroBeam.com](http://CBXAeroBeam.com)  
[NEWAYSuspensions.com](http://NEWAYSuspensions.com)

## EMAIL CONTACTS



**Aftermarket Sales**  
[amsales@safholland.com](mailto:amsales@safholland.com)

**Aftermarket Service and Warranty**  
[service@safholland.com](mailto:service@safholland.com)

## REQUIRE PARTS OR TECHNICAL SUPPORT?



Need assistance with service parts or technical support for SAF, HOLLAND or NEWAY products? The SAF-HOLLAND numbers below connect you with one of our knowledgeable aftermarket customer service representatives.

**USA 800.876.3929**

**Canada 519.537.3494**

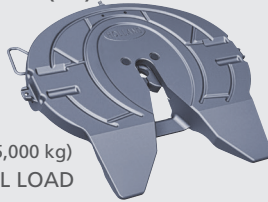
**Mexico 52.55.5362.8843**





**Holland FW35**

XA-351-A-L-P (LH)  
XA-351-A-P (RH)  
XA-351-A-80-L-P (AIR)



CAPACITY:  
55,000 LBS. (25,000 kg)  
MAX VERTICAL LOAD  
150,000 LBS. (68,000 kg)  
MAX DRAWBAR PULL

**REBUILD KIT**

RK-351-A-L (LH)  
RK-351-A (RH)  
RK-351-A-80-L (AIR)  
RK-09559  
(OPTIONAL LUBE TUBE KIT)



**JAW KIT**

RK-351-07296



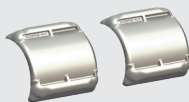
**HANDLE KIT**

RK-08415-1



**POCKET INSERTS**

RK-PKT-2



**YOKE/SHAFT/CAM KIT**

RK-351-12415-L (LH)  
RK-351-12415-R (RH)  
RK-351-12415-L80 (AIR)



**MANUAL SECONDARY LOCK KIT**

RK-351-12414



**AUTOMATIC SECONDARY LOCK**

RK-351-12414-L  
RK-351-12414-R



**Holland FW33  
LOW LUBE**

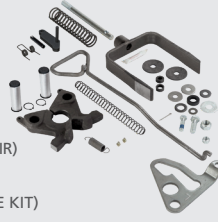
XA-331-A-L-P (LH)  
XA-331-A-P (RH)  
XA-331-A-80-L-P (AIR)



CAPACITY:  
55,000 LBS. (25,000 kg)  
MAX VERTICAL LOAD  
150,000 LBS. (68,000 kg)  
MAX DRAWBAR PULL

**REBUILD KIT**

RK-331-A-L (LH)  
RK-331-A (RH)  
RK-331-A-80-L (AIR)  
RK-09559  
(OPTIONAL LUBE TUBE KIT)



**JAW KIT**

RK-351-07296



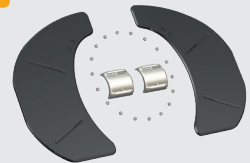
**HANDLE KIT**

RK-08415-1



**LUBE PLATE & POCKET INSERTS**

RK-331-3 (POCKET INSERTS AND LUBE PLATES)  
RK-331-1 (POCKET INSERTS NOT INCLUDED)  
RK-PKT-2 (POCKET INSERTS ONLY)



**YOKE/SHAFT/CAM KIT**

RK-351-12415-L (LH)  
RK-351-12415-R (RH)  
RK-351-12415-L80 (AIR)



**MANUAL SECONDARY LOCK KIT**

RK-311-12414



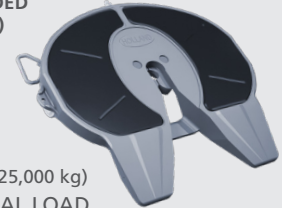
**AUTOMATIC SECONDARY LOCK**

RK-311-12414-L  
RK-311-12414-R



**Holland FW31  
NOLUBE™**

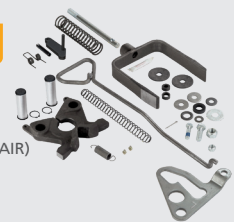
*DISCONTINUED*  
REPLACED BY FW33  
(RECOMMENDED  
ALTERNATIVE)



CAPACITY:  
55,000 LBS. (25,000 kg)  
MAX VERTICAL LOAD  
150,000 LBS. (68,000 kg)  
MAX DRAWBAR PULL

**REBUILD KIT**

RK-311-A-L (LH)  
RK-311-A (RH)  
RK-311-A-80-L (AIR)



**JAW KIT**

RK-311-07296



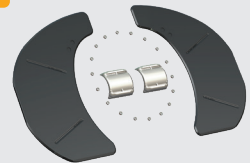
**HANDLE KIT**

RK-08415-1



**POCKET INSERTS**

RK-PKT-2



**YOKE/SHAFT/CAM KIT**

RK-311-12415-L (LH)  
RK-311-12415-R (RH)  
RK-311-12415-L80 (AIR)



**MANUAL SECONDARY LOCK KIT**

RK-311-12414



**AUTOMATIC SECONDARY LOCK**

RK-311-12414-L  
RK-311-12414-R



**NOTE:** If the HOLLAND fifth wheel kit you are looking for is not mentioned in this catalog, please contact our customer service representatives for assistance – 800.876.3929.

**NOTE:** See page 9 for mounting bracket connection kits.



## FWAL LOW LUBE

XA-AL-A-L-P (LH)  
XA-AL-A-P (RH)  
XA-AL-A-80-L-P (AIR)



FOR GEN I, II & III  
IDENTIFICATION, REFER TO  
XL-FW10049UM-en-US

### CAPACITY:

55,000 LBS. (25,000 kg)

MAX VERTICAL LOAD

150,000 LBS. (68,000 kg)

MAX DRAWBAR PULL

### REBUILD KIT

RK-AL-A-L-LL (GEN III)  
RK-AL-A-L-4 (GEN IV)  
RK-AL-A-80-L-4 (GEN IV AIR)



SAF-HOLLAND strongly suggests  
FWAL retrofit kit RK-AL-12462  
with Gen I and Gen II top plates.

### JAW KIT

RK-AL-A-80-L-LL  
(GEN II AIR)  
RK-AL-11078-LL  
(GEN III & IV LOW LUBE)



SAF-HOLLAND strongly suggests  
FWAL retrofit kit RK-AL-12462  
with Gen I and Gen II top plates.

### HANDLE KIT

RK-AL-12308-4  
RK-AL-12308-AR (AIR)



### LUBE PLATE

RK-AL-1



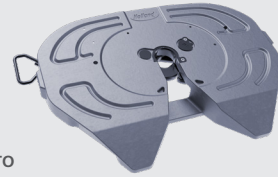
### POCKET INSERTS

RK-PKT-3 (GEN I & II)  
RK-PKT-2 (GEN III & IV)



## FW17

XA-171-A-L-P  
XA-171-A-80-L-P  
(AIR RELEASE)



FOR GEN I & GEN II  
IDENTIFICATION, REFER TO  
XL-FW20195PM-en-US

### CAPACITY:

50,000 LBS. (22,679 kg)

MAX VERTICAL LOAD

150,000 LBS. (68,000 kg)

MAX DRAWBAR PULL

### REBUILD KIT

RK-17-A-L-H  
RK-17-A-80-L-H (AIR)



### JAW KIT

RK-171-12305  
INCLUDES GEN I & II  
HARDWARE



AIR RELEASE  
REQUIRES FULL  
REBUILD KIT

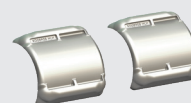
### HANDLE KIT

RK-171-12308  
INCLUDES GEN I & II  
HARDWARE



### POCKET INSERTS

RK-PKT-2





## **Holland** FW0070

**XA-71-DA-25000P**

8" MOUNT HEIGHT

**XA-71-OAP 3.5"**

**XA-71-DAP 2"**



CAPACITY:

70,000 LBS. (32,000 kg)

MAX VERTICAL LOAD

200,000 LBS. (91,000 kg)

MAX DRAWBAR PULL

### REBUILD KIT

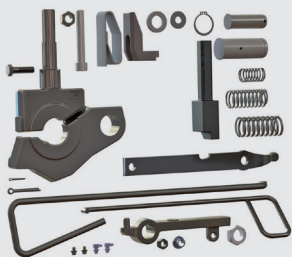
9" MOUNT HEIGHT

**RK-65014**

2" KINGPIN

**RK-65015**

3.5" KINGPIN



8" MOUNT HEIGHT

**RK-65014-1**

2" KINGPIN

**RK-65015-1**

3.5" KINGPIN

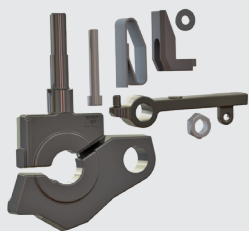
### JAW KIT

**RK-65024**

FOR 2" KINGPIN JAW

**RK-65024-1**

FOR 3.5" KINGPIN JAW



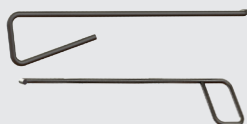
### HANDLE KIT

**XA-1117-H**

9" MOUNT

**XA-03715**

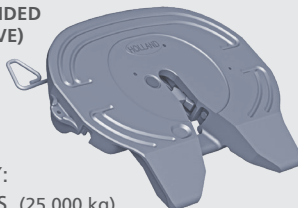
8" MOUNT



## **Holland** FW8

**DISCONTINUED**

(REPLACED BY FW35 –  
RECOMMENDED  
ALTERNATIVE)



CAPACITY:

55,000 LBS. (25,000 kg)

MAX VERTICAL LOAD

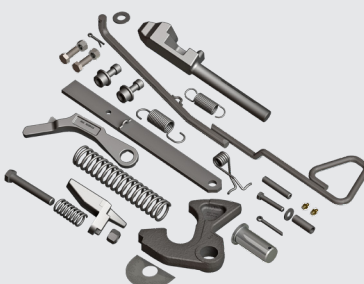
150,000 LBS. (68,000 kg)

MAX DRAWBAR PULL

### REBUILD KIT

**RK-201-A3-L** (LH)

**RK-201-A3** (RH)



FOR FIFTH WHEELS  
MANUFACTURED PRIOR TO 1999,  
ADD WEDGE KIT RK-09590-W

### HANDLE KIT

**RK-09557** (LH)

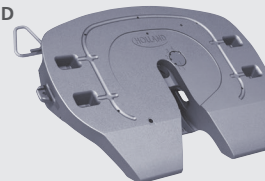
**RK-09556** (RH)



## **Holland** FWS1

**DISCONTINUED**

(REPLACED BY FW17 –  
RECOMMENDED  
ALTERNATIVE)



CAPACITY:

50,000 LBS. (22,679 kg)

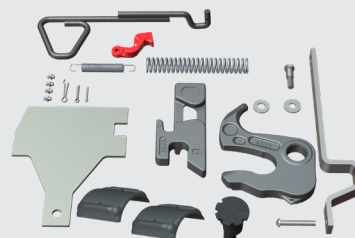
MAX VERTICAL LOAD

150,000 LBS. (68,000 kg)

MAX DRAWBAR PULL

### REBUILD KIT

**RK-FWS-A-L**



### JAW KIT

**RK-4109939**



### HANDLE KIT

**RK-10990**



### POCKET INSERTS

**RK-PKT-2**



**NOTE:** If the HOLLAND fifth wheel kit you are looking for is not mentioned in this catalog, please contact our customer service representatives for assistance – **800.876.3929**.

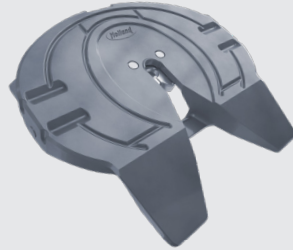
**NOTE:** See page 9 for mounting bracket connection kits.

## **FW35TT** **TERMINAL TRACTOR**

**XA-351-TT-1-P**  
NO FITTINGS ON AIR CYLINDER

**XA-351-TT-2-P**  
TWO FITTINGS ON AIR CYLINDER

**CAPACITY:**  
50,000 LBS. (22,679 kg)  
**MAX VERTICAL LOAD**  
150,000 LBS. (68,000 kg)  
**MAX DRAWBAR PULL**



### **REBUILD KIT**

**RK-351-TT**



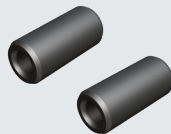
### **JAW KIT**

**RK-12197**



### **BUSHINGS**

**XB-0011**



### **BRACKET CONNECTION KIT**

**RK-12058**



### **AIR CYLINDERS**

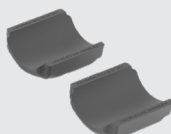
**XA-12055**  
FOR XA-351-TT-1-P –  
NO FITTINGS ON AIR CYLINDER

**XA-12057**  
FOR XA-351-TT-2-P –  
TWO FITTINGS ON AIR CYLINDER



### **POCKET INSERT KIT**

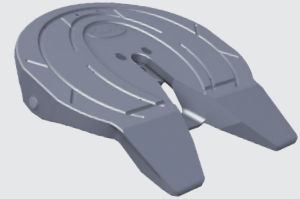
**RK-PKT-5**



## **FW03344** **TERMINAL TRACTOR**

**DISCONTINUED**  
(REPLACED BY FW35TT –  
RECOMMENDED  
ALTERNATIVE)

**CAPACITY:**  
50,000 LBS. (22,679 kg)  
**MAX VERTICAL LOAD**  
150,000 LBS. (68,000 kg)  
**MAX DRAWBAR PULL**

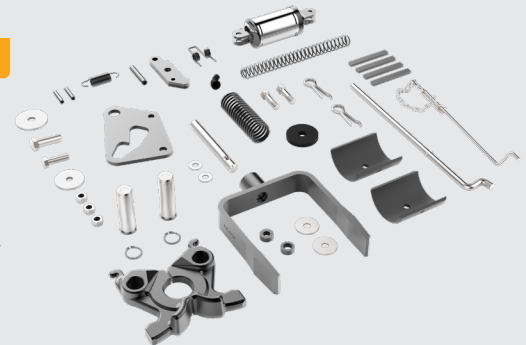


### **REBUILD KIT**

**RK-351-03505**  
AIR CYLINDER -  
1 PORT, 45° ELBOW

**RK-351-03505-3**  
AIR CYLINDER -  
2 PORT, NO ELBOW

**RK-351-03505-4**  
AIR CYLINDER -  
2 PORT, 45° ELBOW



### **JAW KIT**

**RK-351-08332-1**



### **BUSHINGS**

**XB-0011**



### **BRACKET CONNECTION KIT**

**RK-12058**



### **AIR CYLINDERS**

**XA-2524-R-13-1**  
1 PORT

**XA-2524-R-13-4**  
2 PORTS



### **POCKET INSERT KIT**

**XA-03423**  
SOLD INDIVIDUALLY –  
TWO REQUIRED



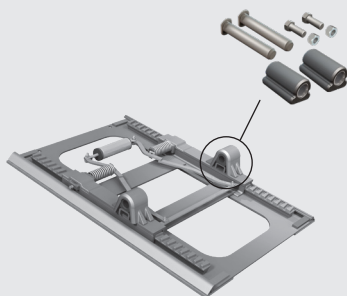


## MOUNTING BRACKET CONNECTION KITS

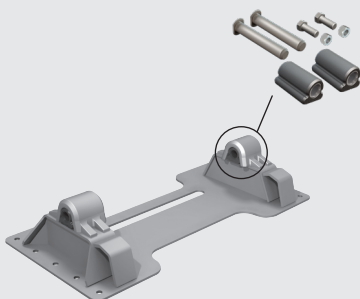
**RK-06973-1**  
BRACKET  
CONNECTION KIT



FOR TRADITIONAL  
SLIDER & STATIONARY



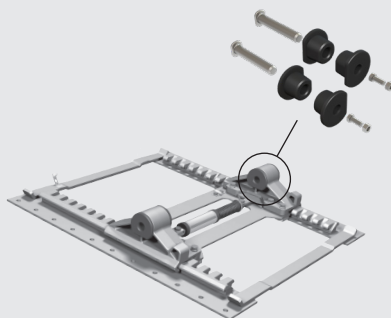
FOR STATIONARY  
INTEGRATED PLATE MOUNT



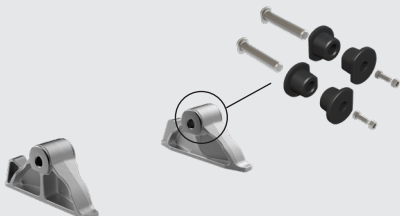
**RK-10605**  
BRACKET  
CONNECTION KIT



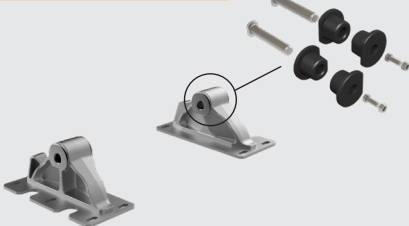
FOR ILS SLIDER & STATIONARY



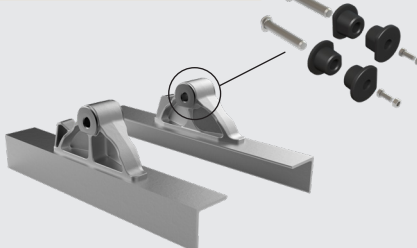
FOR ANGLE MOUNT



FOR FOOT MOUNT



WITH ANGLE MOUNT



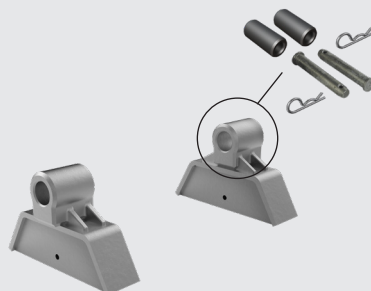
**RK-171-12310**  
BRACKET  
CONNECTION KIT  
FOR FW17 GEN II  
ONLY



**RK-12058**  
BRACKET  
CONNECTION KIT



FOR TERMINAL TRACTOR  
FABRICATED FOOT MOUNT

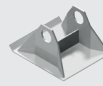






# POPULAR HOLLAND LANDING GEAR KITS

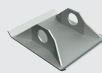
## MARK V™



### LEG WITH 4.5" SAND SHOE

| Left-Hand Leg |              |
|---------------|--------------|
| XA-S9-3A105   | 16.5" Travel |
| XA-S9-5A105   | 18.7" Travel |

| Right-Hand Leg (Gear Box) |              |
|---------------------------|--------------|
| XA-S8-3A105               | 16.5" Travel |
| XA-S8-5A105               | 18.7" Travel |



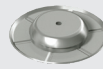
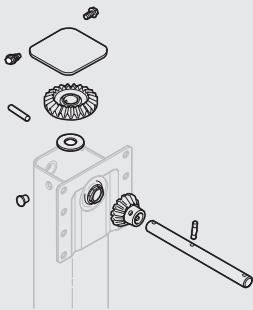
### LEG WITH 2" LOW-PROFILE SAND SHOE

| Left-Hand Leg |              |
|---------------|--------------|
| XA-S9-3A113   | 16.5" Travel |

| Right-Hand Leg (Gear Box) |              |
|---------------------------|--------------|
| XA-S8-3A113               | 16.5" Travel |

### BEVEL AND PINION GEAR

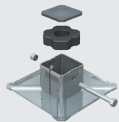
RK-11286 – 1 SPEED LEG  
RK-11362 – 2 SPEED LEG



### LEG WITH SELF-LEVELING FOOT

| Left-Hand Leg |              |
|---------------|--------------|
| XA-S9-3A001   | 16.5" Travel |
| XA-S9-5A001   | 18.7" Travel |

| Right-Hand Leg (Gear Box) |              |
|---------------------------|--------------|
| XA-S8-3A001               | 16.5" Travel |
| XA-S8-5A001               | 18.7" Travel |



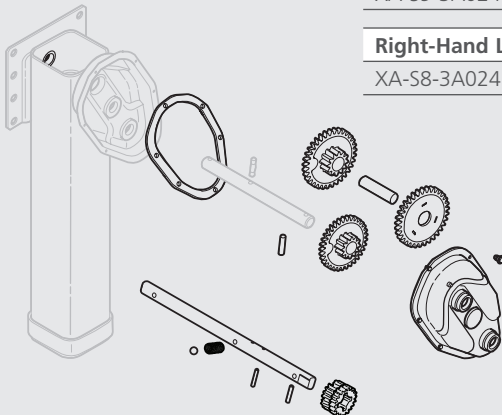
### LEG WITH REMOVABLE CUSHION FOOT

| Left-Hand Leg |              |
|---------------|--------------|
| XA-S9-3A024   | 16.5" Travel |

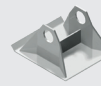
| Right-Hand Leg (Gear Box) |              |
|---------------------------|--------------|
| XA-S8-3A024               | 16.5" Travel |

### GEARBOX REPAIR KIT

RK-11287



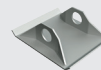
## CLASSIC™



### LEG WITH 4.5" SAND SHOE

| Left-Hand Leg    |            |
|------------------|------------|
| LG2T01-710000000 | 17" Travel |

| Right-Hand Leg (Gear Box) |            |
|---------------------------|------------|
| LG2T01-720000000          | 17" Travel |



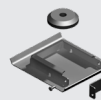
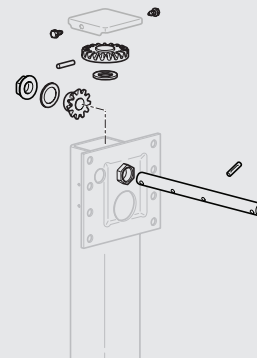
### LEG WITH 2" LOW-PROFILE SAND SHOE

| Left-Hand Leg    |            |
|------------------|------------|
| LG2T03-710000000 | 17" Travel |

| Right-Hand Leg (Gear Box) |            |
|---------------------------|------------|
| LG2T03-720000000          | 17" Travel |

### BEVEL AND PINION GEAR

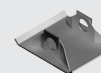
RK-11488



### LEG WITH LOW-PROFILE REMOVABLE CUSHION FOOT

| Left-Hand Leg    |            |
|------------------|------------|
| LG2T0Z-710000000 | 17" Travel |

| Right-Hand Leg (Gear Box) |            |
|---------------------------|------------|
| LG2T0Z-720000000          | 17" Travel |



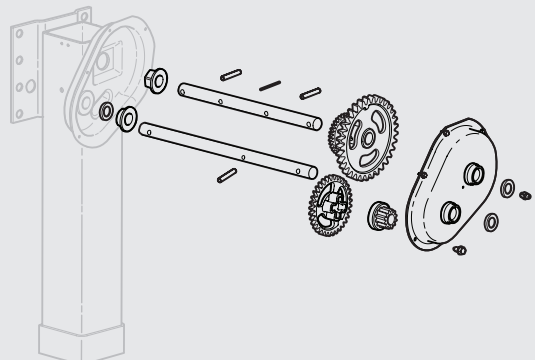
### LEG WITH HEAVY-DUTY LOW PROFILE FOOT

| Left-Hand Leg    |            |
|------------------|------------|
| LG2T09-7100E9000 | 17" Travel |

| Right-Hand Leg (Gear Box) |            |
|---------------------------|------------|
| LG2T09-7200E9000          | 17" Travel |

### GEARBOX REPAIR KIT

RK-11489



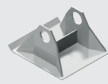
**NOTE:** If the HOLLAND landing gear kit you are looking for is not mentioned in this catalog, please contact our customer service representatives for assistance – **800.876.3929**.

**NOTE:** MARK V sets come with standard accessories kit.

# POPULAR HOLLAND LANDING GEAR KITS



## Holland ATLAS™ 55



**LEG WITH  
4.5" SAND SHOE**

### Left-Hand Leg

|                  |            |
|------------------|------------|
| LG4001-710000000 | 17" Travel |
| LG4001-910000000 | 19" Travel |

### Right-Hand Leg (Gear Box)

|                  |            |
|------------------|------------|
| LG4001-720000000 | 17" Travel |
| LG4001-920000000 | 19" Travel |



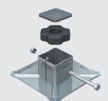
**LEG WITH  
2" LOW-PROFILE  
SAND SHOE**

### Left-Hand Leg

|                  |            |
|------------------|------------|
| LG4003-710000000 | 17" Travel |
| LG4003-910000000 | 19" Travel |

### Right-Hand Leg (Gear Box)

|                  |            |
|------------------|------------|
| LG4003-720000000 | 17" Travel |
| LG4003-920000000 | 19" Travel |



**LEG WITH  
REMOVABLE  
CUSHION FOOT**

### Left-Hand Leg

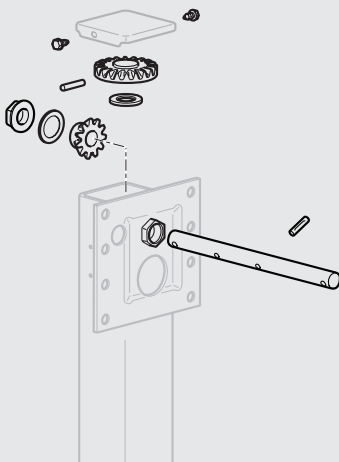
|                  |            |
|------------------|------------|
| LG400B-710000000 | 17" Travel |
| LG400B-910000000 | 19" Travel |

### Right-Hand Leg (Gear Box)

|                  |            |
|------------------|------------|
| LG400B-720000000 | 17" Travel |
| LG400B-920000000 | 19" Travel |

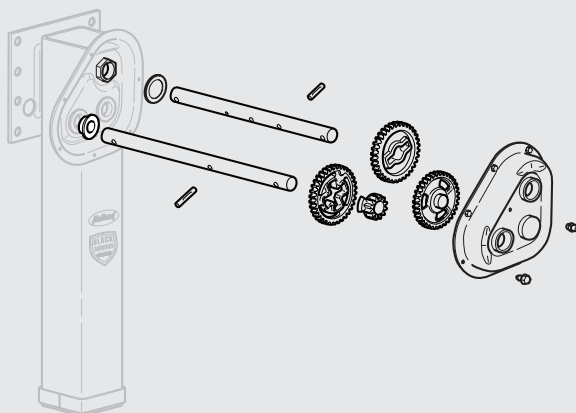
### BEVEL AND PINION GEAR

**RK-11442**

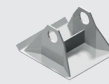


### GEARBOX REPAIR KIT

**RK-11443**



## Holland ATLAS™ 65



**LEG WITH  
4.5" SAND SHOE**

### Left-Hand Leg

|               |            |
|---------------|------------|
| 1025300006460 | 17" Travel |
| 1025300006520 | 19" Travel |

### Right-Hand Leg (Gear Box)

|               |            |
|---------------|------------|
| 1025300006450 | 17" Travel |
| 1025300006530 | 19" Travel |



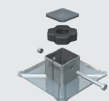
**LEG WITH  
2" LOW-PROFILE  
SAND SHOE**

### Left-Hand Leg

|               |            |
|---------------|------------|
| 1025300006620 | 17" Travel |
| 1025300006410 | 19" Travel |

### Right-Hand Leg (Gear Box)

|               |            |
|---------------|------------|
| 1025300006610 | 17" Travel |
| 1025300006420 | 19" Travel |



**LEG WITH  
REMOVABLE  
CUSHION FOOT**

### Left-Hand Leg

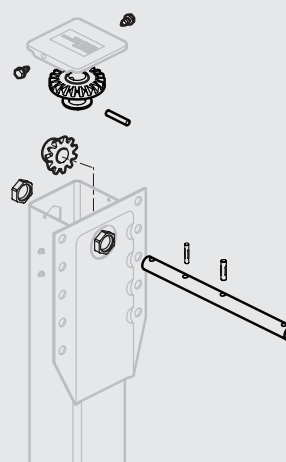
|               |            |
|---------------|------------|
| 1025300007030 | 17" Travel |
| 1025300008670 | 19" Travel |

### Right-Hand Leg (Gear Box)

|               |            |
|---------------|------------|
| 1025300007040 | 17" Travel |
| 1025300008680 | 19" Travel |

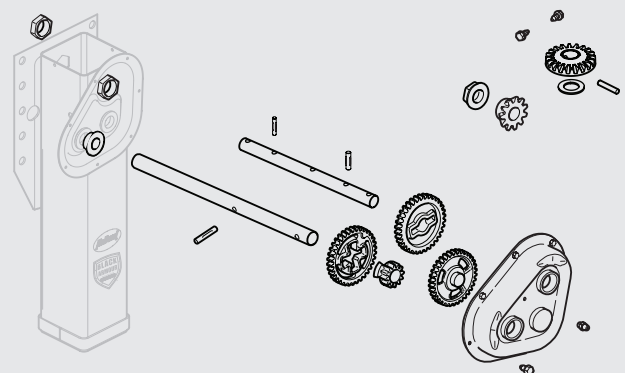
### BEVEL AND PINION GEAR

**RK-11682**



### GEARBOX REPAIR KIT

**RK-11683**



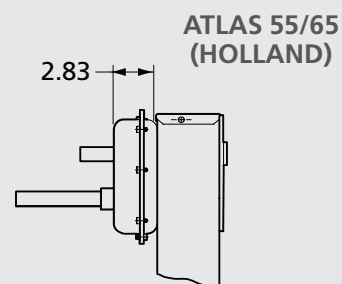
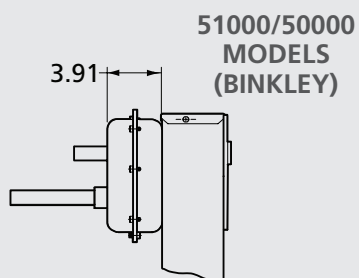


## REBUILD KITS

ORIGINAL PARTS REBUILD KITS FOR DISCONTINUED BINKLEY MODELS

### QUICK TIP

NOT SURE WHICH MODEL YOU HAVE?  
- MEASURE GEARBOX DEPTH



### 51000 SERIES



DISCONTINUED  
(Binkley Model  
Replaced by Atlas 55)



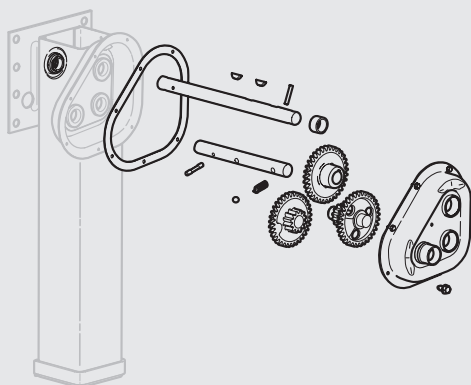
### 50000 SERIES



DISCONTINUED  
(Binkley Model  
Replaced by Atlas 65)

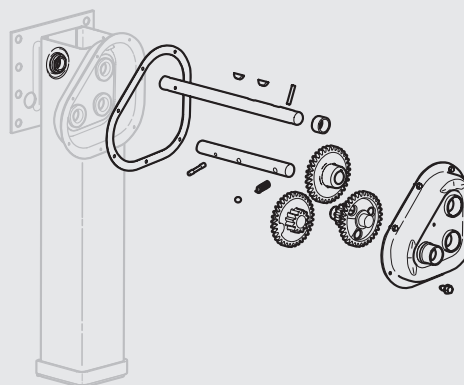
#### GEAR BOX REPAIR KIT

RK-11289



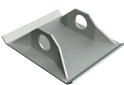
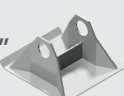


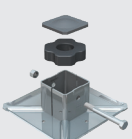
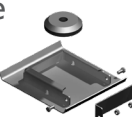



#### GEAR BOX REPAIR KIT

RK-11285



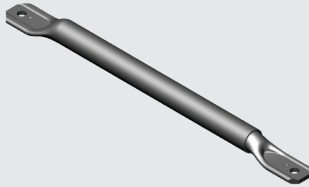


## LANDING GEAR FOOTWEARE AND ACCESSORIES

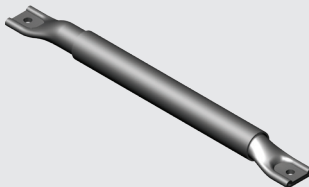
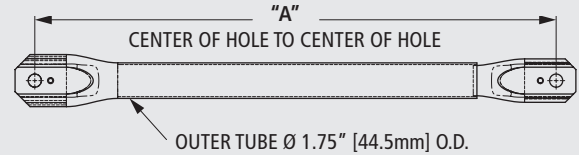
|                        |  | CLASSIC  | ATLAS 55  | ATLAS 65  | MARK V   | MARK V HD |
|------------------------|--|----------|-----------|-----------|----------|-----------|
| SAND SHOES             | Low Profile<br>10" x 10" x 2"<br>                     | 50616008 |           |           |          |           |
|                        | High Profile<br>10" x 10" x 4.5"<br>                  | 50616001 |           |           |          |           |
| AXLE KITS              | Hollow<br>  | 50616023 |           |           |          |           |
|                        | Solid<br>   | 50616024 |           |           |          |           |
| REMOVABLE CUSHION FOOT | Standard RCF<br>                                    | N/A      | LG0048-01 | LG0048-10 | RK-V-024 |           |
|                        | Low Profile RCF<br>                                 | 716059   |           |           | N/A      |           |
| ACCESSORIES            | 68" Cross Shaft<br>                                 | LG0094   |           |           |          |           |
|                        | Crank Handle<br>                                    | 50644000 |           |           | 50644015 |           |
|                        | Brace Ear and Crank Handle Carrier Hardware Kit<br> | LG2789   |           |           | LG2790   |           |



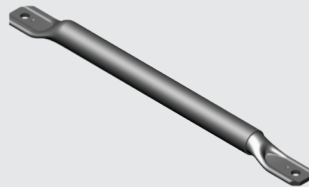
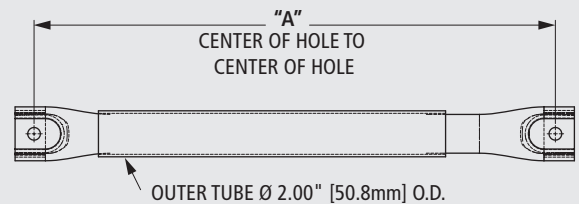
## LANDING GEAR ADJUSTABLE STRUT BRACES



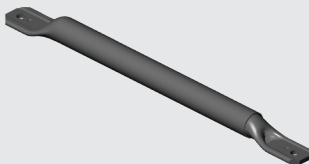
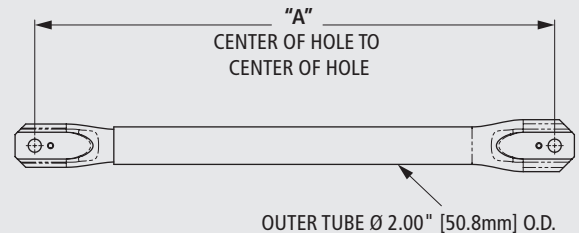
| PART NO. | "A" [mm]                           | WEIGHT<br>LBS. [kg] |
|----------|------------------------------------|---------------------|
| 50618006 | 26.00" [660.4] TO 41.00" [1041.4]  | 5.30 [2.40]         |
| 50618007 | 42.00" [1066.8] TO 57.00" [1447.8] | 7.00 [3.18]         |
| 50618008 | 56.00" [1422.4] TO 72.00" [1828.8] | 9.10 [4.13]         |



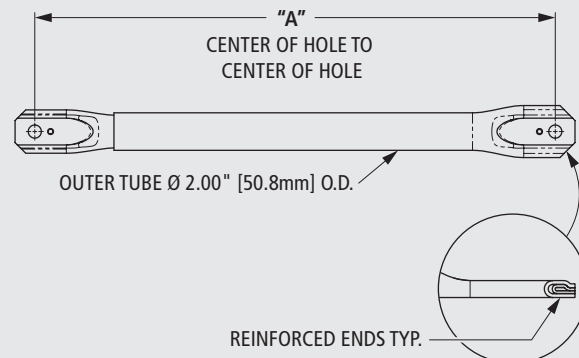
| NO.      | "A" [mm]                           | WEIGHT<br>LBS. [kg] |
|----------|------------------------------------|---------------------|
| 50618009 | 26.00" [660.4] TO 41.00" [1041.4]  | 13.60 [6.17]        |
| 50618010 | 35.00" [889.0] TO 54.00" [1371.6]  | 18.10 [8.21]        |
| 50618011 | 56.00" [1422.4] TO 72.00" [1828.8] | 25.20 [11.43]       |



| PART NO. | "A" [mm]                           | WEIGHT<br>LBS. [kg] |
|----------|------------------------------------|---------------------|
| 50618012 | 26.00" [660.4] TO 41.00" [1041.4]  | 6.50 [2.95]         |
| 50618013 | 42.00" [1066.8] TO 57.00" [1447.8] | 8.80 [3.99]         |
| 50618014 | 56.00" [1422.4] TO 72.00" [1828.8] | 11.10 [5.03]        |



| PART NO. | DESCRIPTION                | "A" [mm]                 | WEIGHT<br>LBS. [kg] |
|----------|----------------------------|--------------------------|---------------------|
| 50618031 | Brace, Med Duty ADJ 56-72" | 56[1422.4] TO 72[1828.8] | 14.60 [6.62]        |
| 50618030 | Brace, Med Duty ADJ 42-57" | 42[1066.8] TO 57[1447.8] | 10.80 [4.90]        |
| 50618029 | Brace, Med Duty ADJ 26-41" | 26[660.4] TO 41[1041.4]  | 8.00 [3.63]         |







## Popular Suspension Kits – Air, Mechanical and Disc Brakes



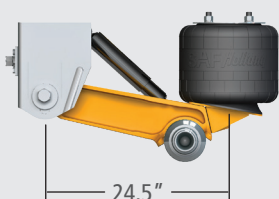
**SAF** *Holland*  
ORIGINAL PARTS™

## SAF CBX FIXED FRAME SERIES KITS

### TRAILING ARM IDENTIFICATION

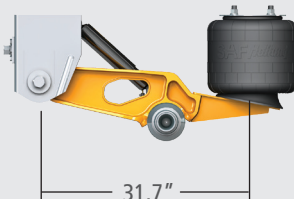
NOT SURE WHICH MODEL YOU HAVE?  
COMPARE TO THE TRAILING ARM DESIGNS SHOWN BELOW.

**245** (CBX23, CBX25 & CBX25/30)



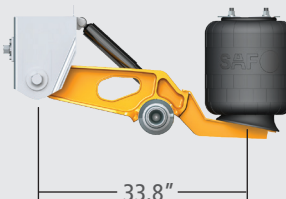
24.5"

**317** (CBX23)



31.7"

**338** (CBX25 & CBX25/30)

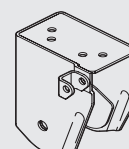
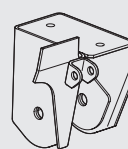


33.8"

### FRAME BRACKET IDENTIFICATION

WINGED

NON-WINGED



### CBX23



23,000 lbs.  
Capacity

#### CBX23 245 – NON-WINGED

| RIDE HEIGHT | SHOCK ABSORBER | AIR SPRING |
|-------------|----------------|------------|
| 14"         | 90045381       | 90557397   |
| 15"         | 90045608       | 90557398   |
| 16"         | 90045299       | 90557399   |
| 17"         | 90045299       | 90557399   |

#### CBX23 317 – NON-WINGED

|     |          |          |
|-----|----------|----------|
| 14" | 90045607 | 90557403 |
| 15" | 90045608 | 90557403 |
| 16" | 90045299 | 90557404 |
| 17" | 90045299 | 90557404 |

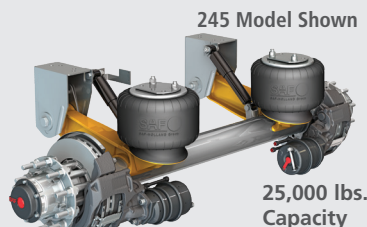
#### CBX23 245 – WINGED

|     |          |          |
|-----|----------|----------|
| 14" | 90044868 | 90557397 |
| 15" | 90045381 | 90557398 |
| 16" | 90044162 | 90557399 |
| 17" | 90044162 | 90557399 |

#### CBX23 317 – WINGED

|     |          |          |
|-----|----------|----------|
| 14" | 90045381 | 90557373 |
| 15" | 90045607 | 90557373 |
| 16" | 90044162 | 90557404 |
| 17" | 90044162 | 90557404 |

### CBX25



25,000 lbs.  
Capacity

#### CBX25 245 – NON-WINGED

| RIDE HEIGHT | SHOCK ABSORBER | AIR SPRING |
|-------------|----------------|------------|
| 14"         | 90045381       | 90557400   |
| 15"         | 90045608       | 90557401   |
| 16"         | 90045299       | 90557402   |
| 17"         | 90045299       | 90557402   |

#### CBX25 338 – NON-WINGED

|     |          |          |
|-----|----------|----------|
| 14" | 90045608 | 90557376 |
| 15" | 90044162 | 90557376 |
| 16" | 90045054 | 90557377 |
| 17" | 90045054 | 90557377 |

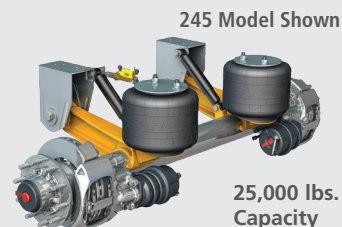
#### CBX25 245 – WINGED

|     |          |          |
|-----|----------|----------|
| 14" | 90044868 | 90557400 |
| 15" | 90045381 | 90557401 |
| 16" | 90044162 | 90557402 |
| 17" | 90044162 | 90557402 |

#### CBX25 338 – WINGED

|     |          |          |
|-----|----------|----------|
| 14" | 90045607 | 90557376 |
| 15" | 90045608 | 90557376 |
| 16" | 90045040 | 90557377 |
| 17" | 90045040 | 90557377 |

### CBX25/30



25,000 lbs.  
Capacity

#### CBX25/30 245 – NON-WINGED

| RIDE HEIGHT | SHOCK ABSORBER | AIR SPRING |
|-------------|----------------|------------|
| 14"         | 90045607       | 90557410   |
| 15"         | 90045608       | 90557410   |
| 16"         | 90045299       | 90557409   |
| 17"         | 90045299       | 90557409   |

#### CBX25/30 338 – NON-WINGED

|     |          |          |
|-----|----------|----------|
| 14" | 90044868 | 90557410 |
| 15" | 90045607 | 90557410 |
| 16" | 90044162 | 90557409 |
| 17" | 90044162 | 90557409 |

#### CBX25/30 245 – WINGED

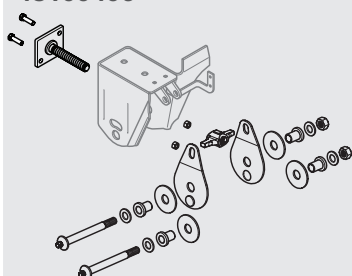
|     |          |          |
|-----|----------|----------|
| 14" | 90044868 | 90557410 |
| 15" | 90045607 | 90557410 |
| 16" | 90044162 | 90557409 |
| 17" | 90044162 | 90557409 |

#### CBX25/30 338 – WINGED

|     |          |          |
|-----|----------|----------|
| 15" | 90045607 | 90557243 |
| 17" | 90044162 | 90557243 |

### CBX SWING ALIGN KIT

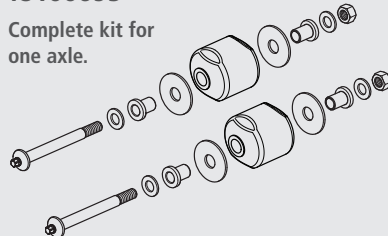
**48100406**



### CBX PIVOT BUSHING KIT

**48100695**

Complete kit for one axle.



### MAX VALVE HEIGHT CONTROL VALVE (HCV) KITS

- 50860013** Non-Dump
- 50860014** Pressure Dump
- 50860015** Pressure Dump – Normal Flow
- 50860016** Pressure Dump – Low Flow



**NOTE:** If the SAF trailer suspension kit you are looking for is not mentioned in this catalog, please contact our customer service representatives for assistance – **800.876.3929**.

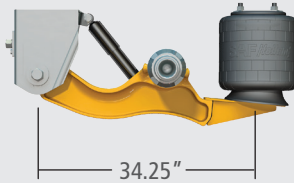


## SAF CBX UNDERSLUNG FIXED FRAME SERIES KITS

### TRAILING ARM IDENTIFICATION

NOT SURE WHICH MODEL YOU HAVE?  
COMPARE TO THE TRAILING ARM DESIGN BELOW.

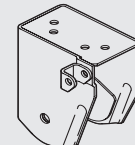
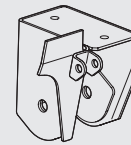
**342** (CBX23u, CBX25u)



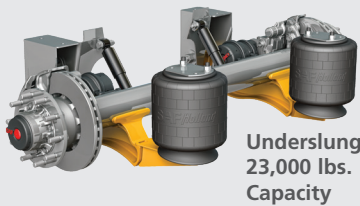
### FRAME BRACKET IDENTIFICATION

WINGED

NON-WINGED

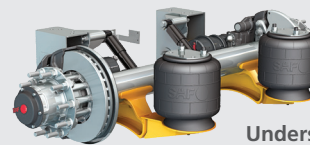


### CBX23u



Underslung  
23,000 lbs.  
Capacity

### CBX25u



Underslung  
25,000 lbs.  
Capacity

#### CBX23u 342 – 3" UP TRAVEL – NON-WINGED

| RIDE HEIGHT | SHOCK ABSORBER | AIR SPRING |
|-------------|----------------|------------|
| 6"          | 90044868       | 90557403   |
| 9"          | 90044868       | 90557404   |
| 8"          | 90045608       | 90557377   |
| 9"          | 90044162       | 90557377   |
| 10"         | 90045040       | 90557377   |
| 12"         | 90045666       | 90557377   |

#### CBX23u 342 – 4" UP TRAVEL – NON-WINGED

|     |          |          |
|-----|----------|----------|
| 7"  | 90044868 | 90557403 |
| 8"  | 90045381 | 90557404 |
| 9"  | 90045608 | 90557377 |
| 10" | 90044162 | 90557377 |
| 12" | 90045040 | 90557377 |
| 13" | 90045054 | 90557377 |
| 14" | 90045054 | 90557119 |

#### CBX23u 342 – 3" UP TRAVEL – WINGED

|    |          |          |
|----|----------|----------|
| 6" | 90045381 | 90045381 |
|----|----------|----------|

#### CBX23u 342 – 4" UP TRAVEL – WINGED

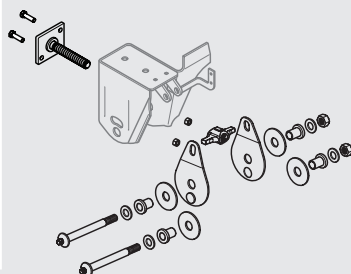
|    |          |          |
|----|----------|----------|
| 7" | 90045381 | 90557403 |
| 8" | 90045608 | 90557404 |

#### CBX25u 342 – 4" UP TRAVEL – NON-WINGED

| RIDE HEIGHT | SHOCK ABSORBER | AIR SPRING |
|-------------|----------------|------------|
| 8"          | 90045381       | 90557404   |
| 10"         | 90044162       | 90557377   |
| 12"         | 90045040       | 90557377   |

### CBX SWING ALIGN KIT

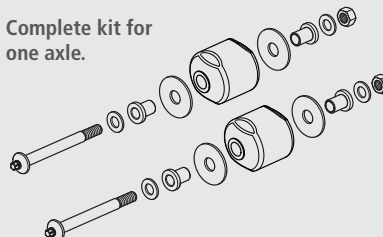
**48100406**



### CBX PIVOT BUSHING KIT

**48100695**

Complete kit for  
one axle.



### MAX VALVE HEIGHT CONTROL VALVE (HCV) KITS

- 50860013** Non-Dump
- 50860014** Pressure Dump
- 50860015** Pressure Dump – Normal Flow
- 50860016** Pressure Dump – Low Flow



## SAF CBXA AEROBEAM™ FIXED FRAME SERIES KITS

### CBXAN23

Narrow Hanger



23,000 lbs.  
Capacity

| RISE HEIGHT | SHOCK ABSORBER | AIR SPRING |
|-------------|----------------|------------|
| 14"         | 90044868       | 90557397   |
| 15"         | 90045381       | 90557397   |
| 16"         | 90044162       | 90557398   |
| 17"         | 90045299       | 90557399   |

### CBXAS23

Standard Hanger



23,000 lbs.  
Capacity

| RISE HEIGHT | SHOCK ABSORBER | AIR SPRING |
|-------------|----------------|------------|
| 14"         | 90044868       | 90557397   |
| 15"         | 90045607       | 90557397   |
| 16"         | 90044669       | 90557398   |
| 17"         | 90045669       | 90557399   |

### CBXAS25

Standard Hanger



25,000 lbs.  
Capacity

| RISE HEIGHT | SHOCK ABSORBER | AIR SPRING |
|-------------|----------------|------------|
| 14"         | 90044868       | 90557400   |
| 15"         | 90045607       | 90557401   |
| 16"         | 90044669       | 90557402   |
| 17"         | 90045669       | 90557399   |

### CBXAS30

Standard Hanger



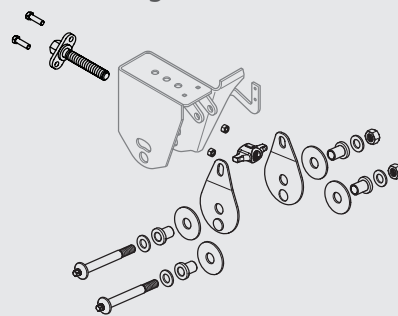
30,000 lbs.  
Capacity

| RISE HEIGHT | SHOCK ABSORBER | AIR SPRING |
|-------------|----------------|------------|
| 14"         | 90044868       | 90557480   |
| 15"         | 90045607       | 90557480   |
| 16"         | 90044299       | 90557479   |
| 17"         | 90045299       | 90557479   |

#### CBXAN SWING ALIGN KIT

48100699

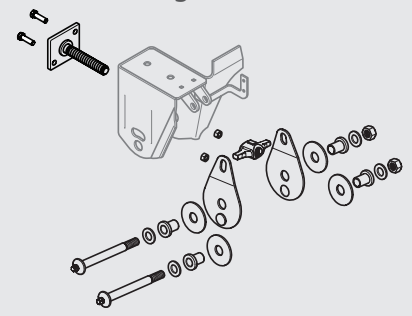
Narrow Hanger



#### CBXAS SWING ALIGN KIT

48100696

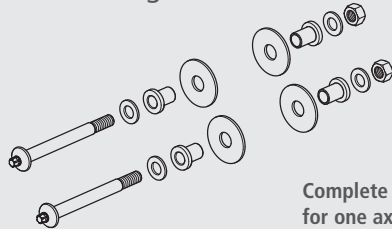
Standard Hanger



#### CBXAN PIVOT CONNECTION KIT

48100700

Narrow Hanger

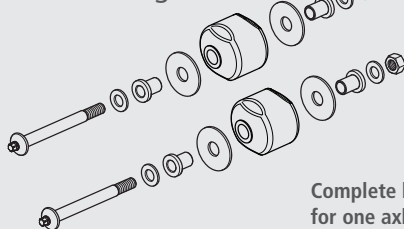


Complete kit  
for one axle.

#### CBXAN PIVOT BUSHING KIT

48100698

Narrow Hanger

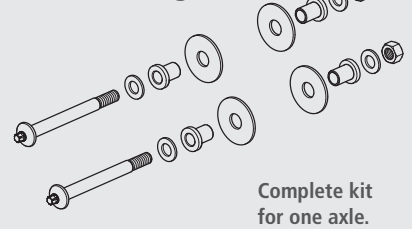


Complete kit  
for one axle.

#### CBXAS PIVOT CONNECTION KIT

48100697

Standard Hanger

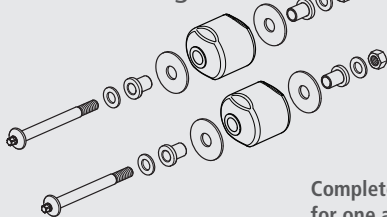


Complete kit  
for one axle.

#### CBXAS PIVOT BUSHING KIT

48100695

Standard Hanger



Complete kit  
for one axle.

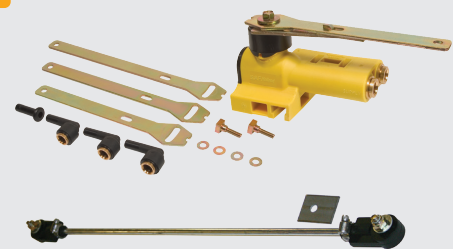
#### MAX VALVE HEIGHT CONTROL VALVE (HCV) KITS

50860013 Non-Dump

50860014 Pressure Dump

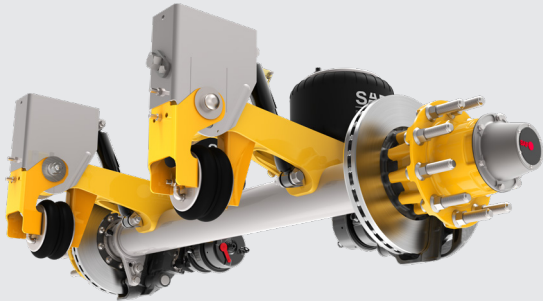
50860015 Pressure Dump  
– Normal Flow

50860016 Pressure Dump  
– Low Flow



## SAF POSILIFT™ AXLE UNIT KITS

### CBXA AEROBEAM™ POSILIFT



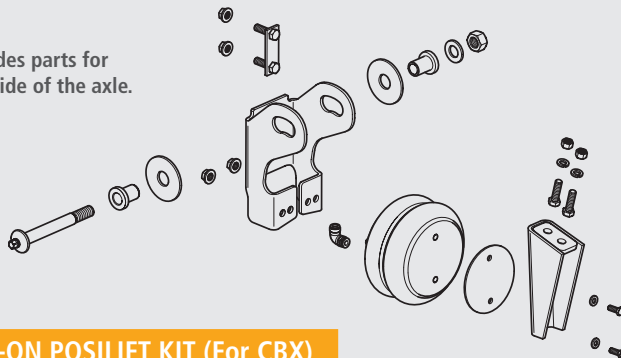
FOR USE ON CBXAN23, CBXAS23, CBXAS25, CBXAS30 AND CBXA40 AEROBEAM™ MODELS

### BOLT-ON POSILIFT KIT (For CBXA AEROBEAM)

48100732 - CBXAN (Narrow Width)

48100759 - CBXAS (Standard Width)

Includes parts for one side of the axle.

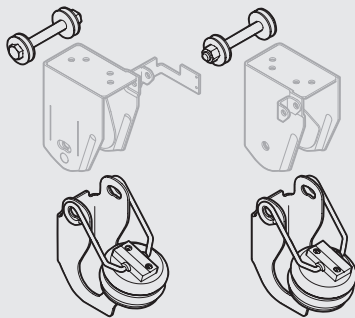


### BOLT-ON POSILIFT KIT (For CBX)

44100160

Complete kit for one axle. Includes air springs.

\* Not available for disc brakes on CBX25 338 and CBX25/30 245 suspensions.



### LIFT AXLE CONTROL VALVES (For CBX and CBXA)

50860011

Electric Air Control Valve

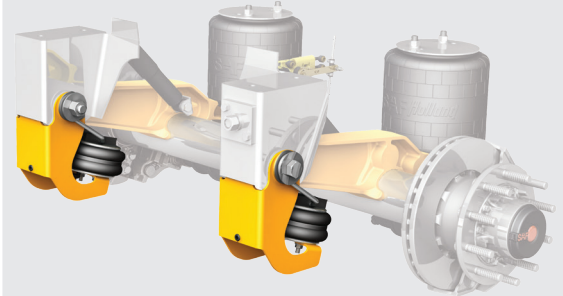


50860009

Manual Air Control Valve



### CBX POSILIFT

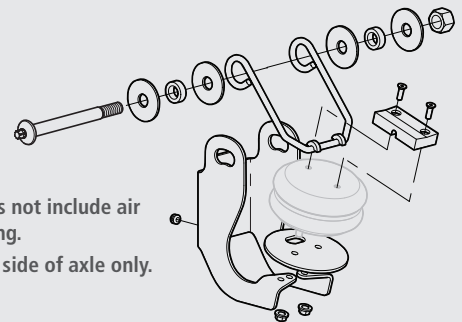


FOR USE ON CBX23 AND CBX25 MODELS

### POSILIFT BRACKET REPLACEMENT KIT (For CBX)

48100496

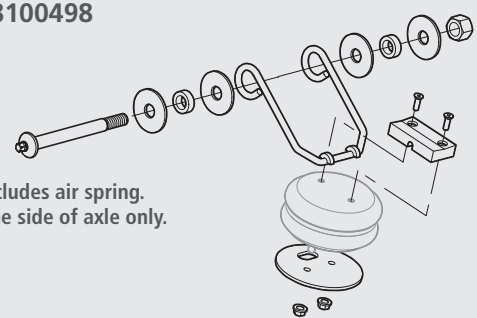
Does not include air spring. One side of axle only.



### BOLT-ON POSILIFT KIT (For CBX)

48100498

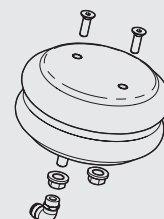
Includes air spring. One side of axle only.



### BOLT-ON POSILIFT KIT (For CBX)

48100497

Includes one air spring and fasteners.



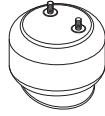
## SAF ● CBX AIR SLIDER SERIES KITS

### CBX40

DISCONTINUED

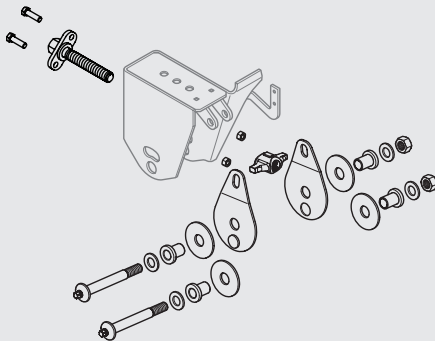
REPLACED BY CBXA40 AEROBEAM



| RIDE HEIGHT | SHOCK ABSORBER | AIR SPRING   |
|-------------|----------------|--|
| 16"         | 90045298       | 90557372  |
| 16.5"       | 90044162       |  |
| 17"         | 90044162       |  |

#### SWING ALIGN KIT

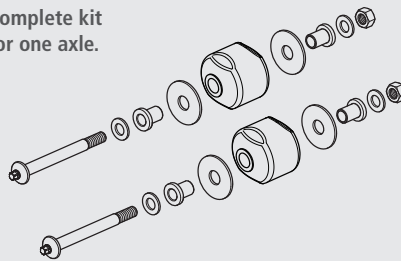
48100406



#### PIVOT CONNECTION KIT

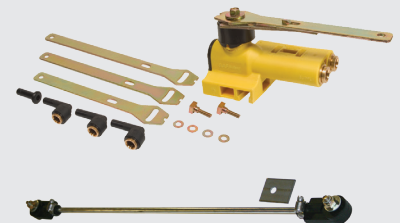
48100695

Complete kit  
for one axle.



#### MAX VALVE HEIGHT CONTROL VALVE (HCV) KITS

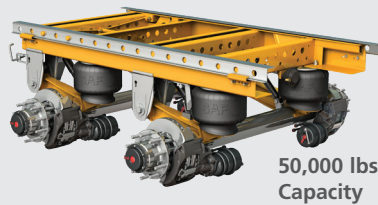
- 50860013 Non-Dump
- 50860014 Pressure Dump
- 50860015 Pressure Dump  
– Normal Flow
- 50860016 Pressure Dump  
– Low Flow



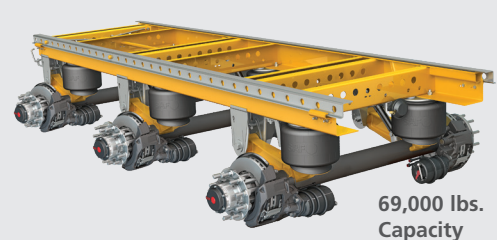
### CBX46



### CBX50



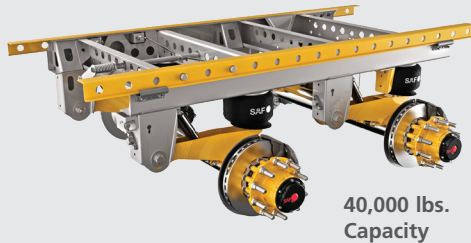
### CBX69



**NOTE:** Contact Customer Service for CBX46, 50, & 69 kit part number assistance – 800.876.3929.

## SAF ● CBXA AEROBEAM™ AIR SLIDER SERIES KITS

### CBXA40

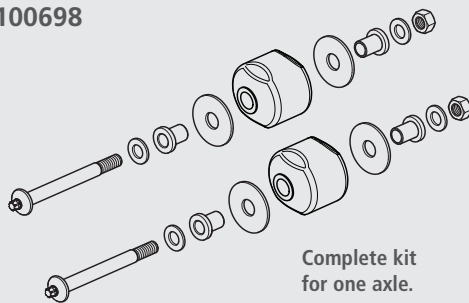


40,000 lbs.  
Capacity

| RISE HEIGHT | SHOCK ABSORBER | AIR SPRING |
|-------------|----------------|------------|
| 16"         | 90045298       | 90557372   |
| 16.5"       | 90044162       | 90557372   |
| 17"         | 90044162       | 90557372   |
| 18"         | 90045040       | 90557194   |

#### PIVOT BUSHING KIT

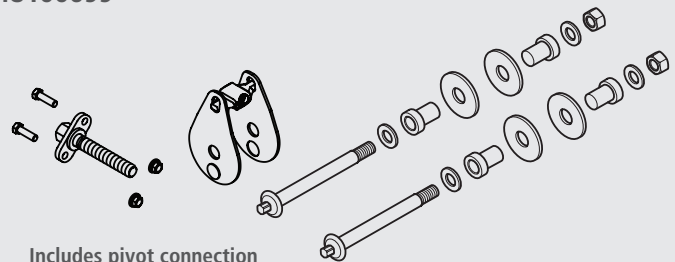
48100698



Complete kit  
for one axle.

#### SWING ALIGN KIT

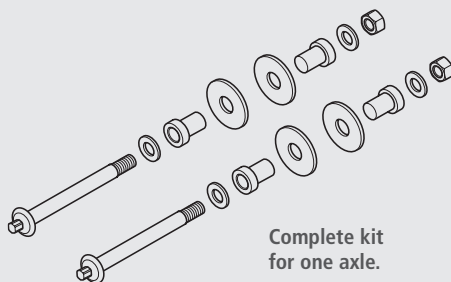
48100699



Includes pivot connection  
kit for one axle.

#### PIVOT CONNECTION KIT

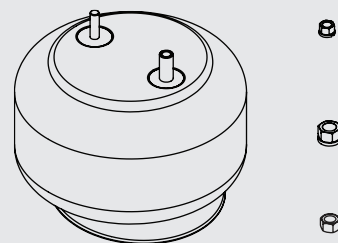
48100700



Complete kit  
for one axle.

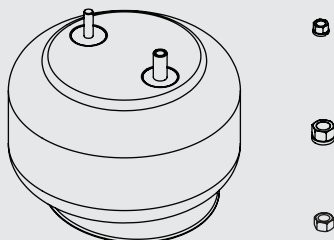
#### AIR SPRING KIT (16", 16.5", & 17" Ride Height)

48100650



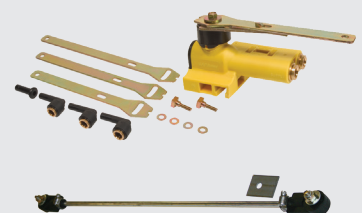
#### AIR SPRING KIT (18" Ride Height)

48100651



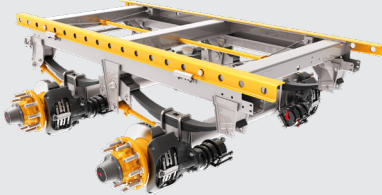
#### MAX VALVE HEIGHT CONTROL VALVE (HCV) KITS

- 50860013 Non-Dump
- 50860014 Pressure Dump
- 50860015 Pressure Dump  
– Normal Flow
- 50860016 Pressure Dump  
– Low Flow





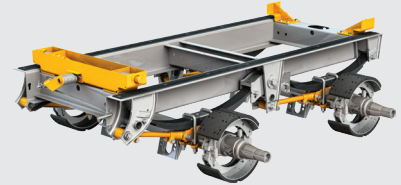
**SAF ● ULX40,  
ULTRALITE™ &  
DURASYSTEM™**  
(Binkley)



**SAF ● DLX40 &  
DURALITE™**  
(Binkley)



**SAF ● ZFX40 &  
Z-FRAME**  
(Binkley)



KITS APPLY TO ALL MECHANICAL SUSPENSION MODELS

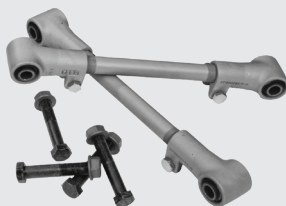
**FIXED TORQUE ARM KIT**

SPK0005



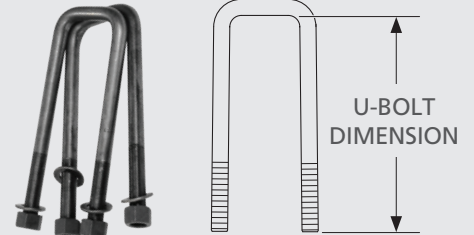
**ADJUSTABLE TORQUE ARM KIT**

SPK0006



**U-BOLT KIT**

SPK0009 9.38"  
SPK0010 9.88"  
SPK0011 10.38"  
SPK0012 10.88"  
SPK0013 11.38"

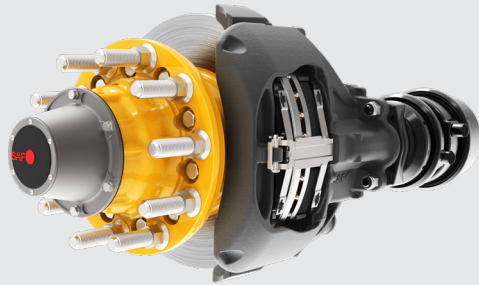


**RETAINING BOLT KIT**

SPK0111

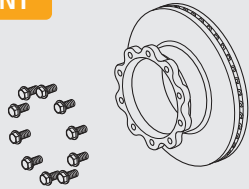


## SAF P89 PARALLEL SPINDLE KITS



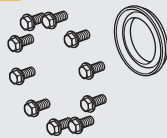
### ROTOR REPLACEMENT

51830049



### ROTOR ATTACHMENT

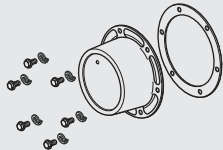
51830051



### HUB CAP REPAIR

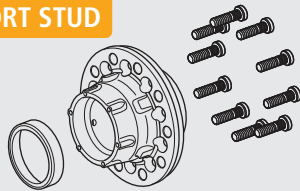
2074200000200  
STD Grease

20742000000210  
PSI



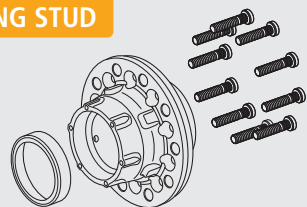
### HUB ASSEMBLY SHORT STUD

2073300000710



### HUB ASSEMBLY LONG STUD

2073300000720



### DUST SHIELD

10223000000040

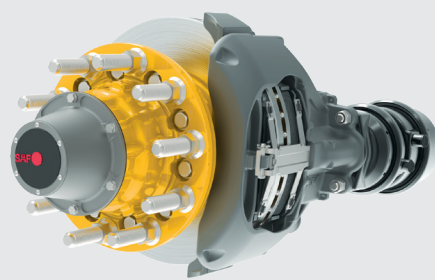


### ABS SENSOR

10223000000020

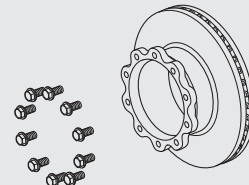


## SAF P89 TAPER SPINDLE KITS



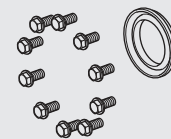
### ROTOR REPLACEMENT

51830049



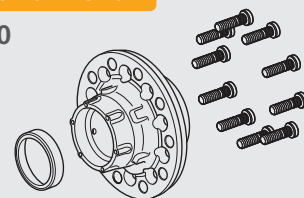
### ROTOR ATTACHMENT

51830050



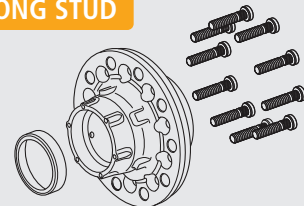
### HUB ASSEMBLY SHORT STUD

2073300000730



### HUB ASSEMBLY LONG STUD

2073300000740



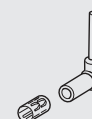
### DUST SHIELD

10223000000040



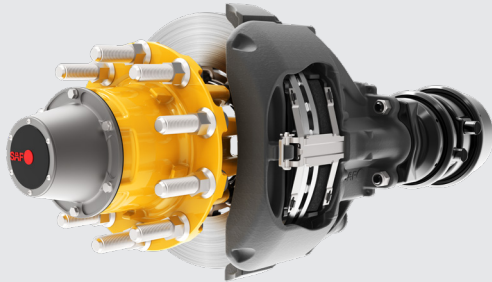
### ABS SENSOR

10223000000020



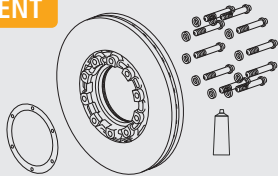


**SAF P89 PLUS KITS**  
FEATURES SEALED BEARINGS



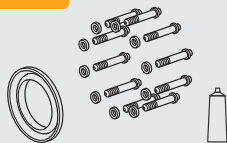
**ROTOR REPLACEMENT**

51830036



**ROTOR ATTACHMENT**

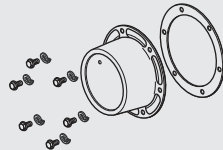
51830055



**HUB CAP REPAIR**

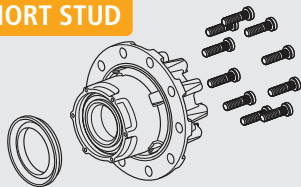
2074200000200  
STD Grease

2074200000210  
PSI



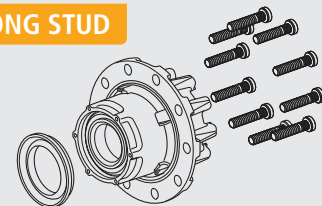
**HUB ASSEMBLY SHORT STUD**

2073190000120



**HUB ASSEMBLY LONG STUD**

2073190000130



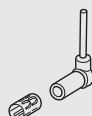
**DUST SHIELD**

1022300000040

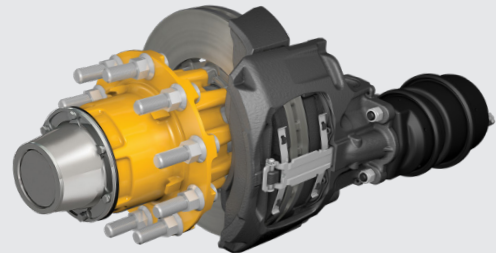


**ABS SENSOR**

1022300000020

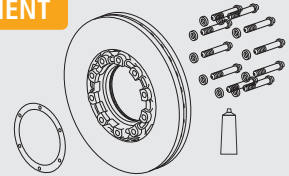


**SAF P89 INTEGRAL® KITS**  
EQUIPPED WITH  
STANDARD BEARINGS



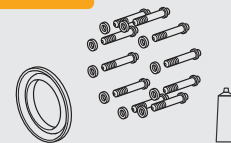
**ROTOR REPLACEMENT**

51830036



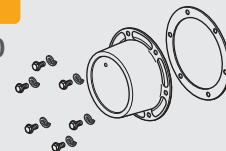
**ROTOR ATTACHMENT**

51830038



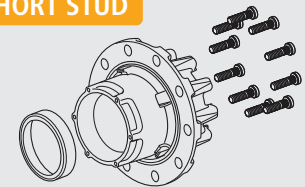
**HUB CAP REPAIR**

2074200000210



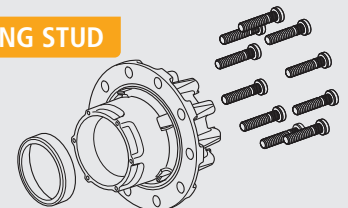
**HUB ASSEMBLY SHORT STUD**

2073190000090



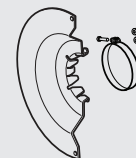
**HUB ASSEMBLY LONG STUD**

2073190000100



**DUST SHIELD**

1022300000040

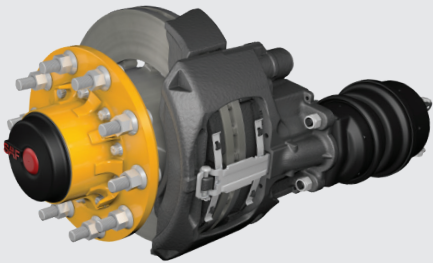


**ABS SENSOR**

1022300000020

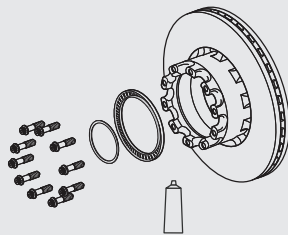


## SAF ● C88 INTEGRAL® AIR DISC BRAKES KITS



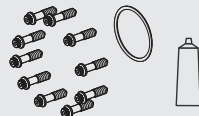
### ROTOR REPLACEMENT

51830037



### ROTOR ATTACHMENT

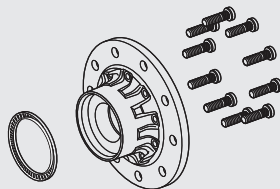
03434366300Z



### GEN I HUB ASSEMBLY SHORT STUD

2073190000140  
(GEN I)

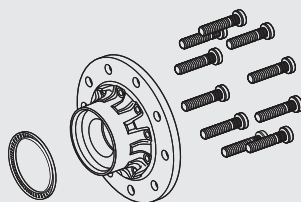
2073190000160  
(GEN II)



### GEN I HUB ASSEMBLY LONG STUD KIT

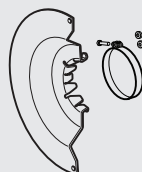
2073190000150  
(GEN I)

2073190000170  
(GEN II)



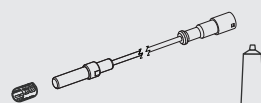
### DUST SHIELD KIT

1022300000040



### WABCO ABS KIT

03029024200

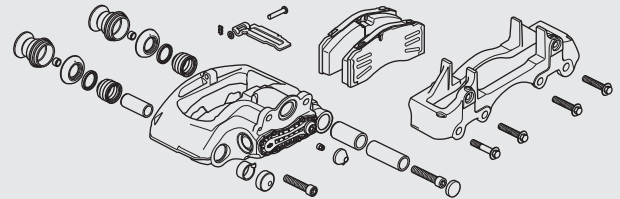


## SAF ● SK7 CALIPER KITS

FOR C88 AND P89 INTEGRAL AIR DISC BRAKES

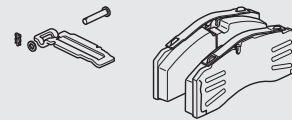
LEFT CALIPER: 51830039

RIGHT CALIPER: 51830040



### PAD KIT (L/H) CU- FREE

03057008503



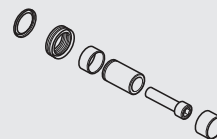
### DIAPHRAGM REBUILD KIT

03434381400



### PIN REBUILD KIT

03434381500



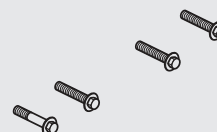
### SHEAR ADAPTER KIT

03434381600



### MOUNTING BOLTS KIT

03434366000

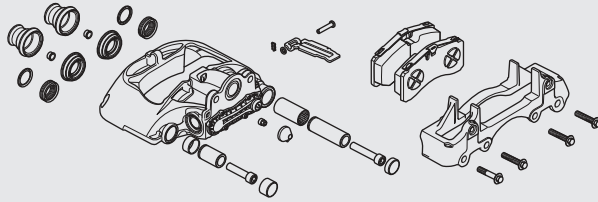


Green Teal  
Serial Tag  
(SK7 DOES NOT  
include SAF  
embossed stamp)

## SAF ● ST7 CALIPER KITS

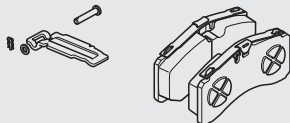
FOR P89 AND P89 PLUS AIR DISC BRAKES

LEFT CALIPER: 51830052  
RIGHT CALIPER: 51830053



### PAD KIT (L/H) CU- FREE

03057000603



Blue Serial Tag

### DIAPHRAGM REBUILD KIT

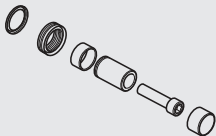
03434382300



SAF Embossed Stamp

### PIN REBUILD KIT

03434381500



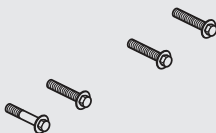
### SHEAR ADAPTER KIT

03434381600



### MOUNTING BOLTS KIT

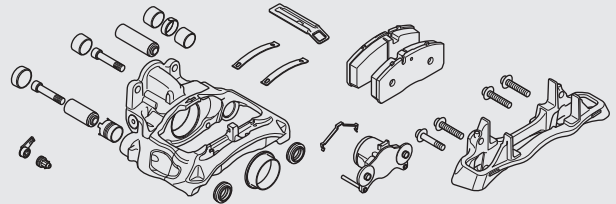
03434366000



## SAF ● SBS2220H20 CALIPER KITS

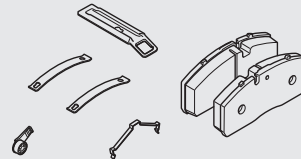
FOR P89 AND P89 PLUS AIR DISC BRAKES

LEFT CALIPER: 51830062  
RIGHT CALIPER: 51830063



### PAD KIT (L/H) CU- FREE

03057009703



Steel Serial Tag

### THRUST PIECES KIT

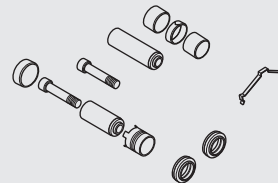
03434386300



SAF De-Bossed Stamp

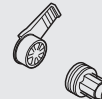
### GUIDE SEAL KIT

03434386100



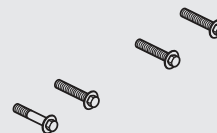
### RESET SHAFT KIT

03434386200



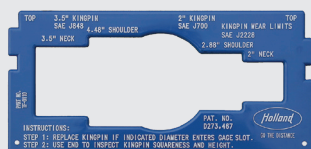
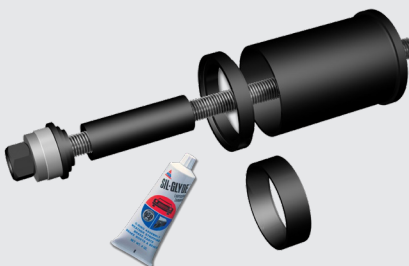
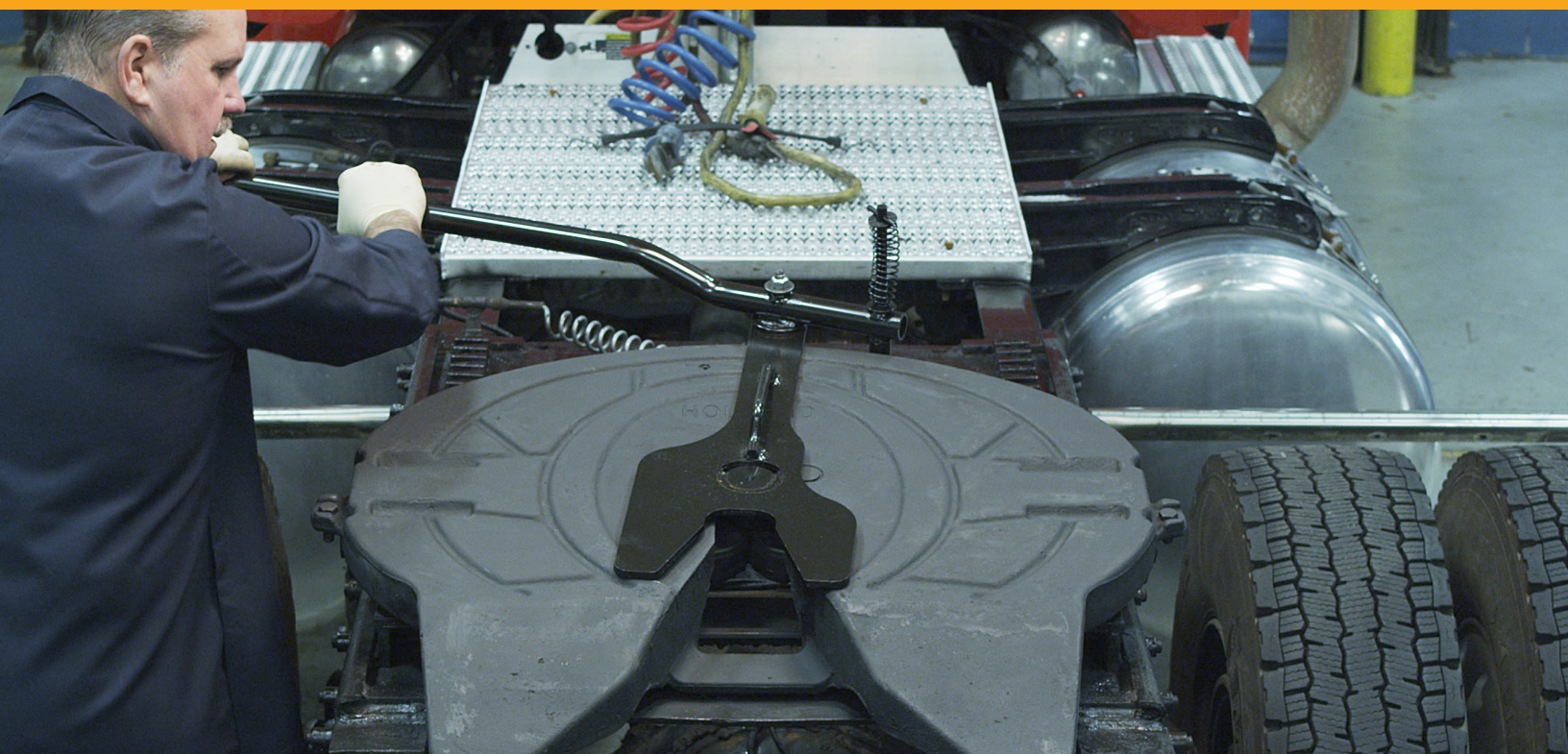
### MOUNTING BOLTS KIT

03434366000





# Popular Service Tools

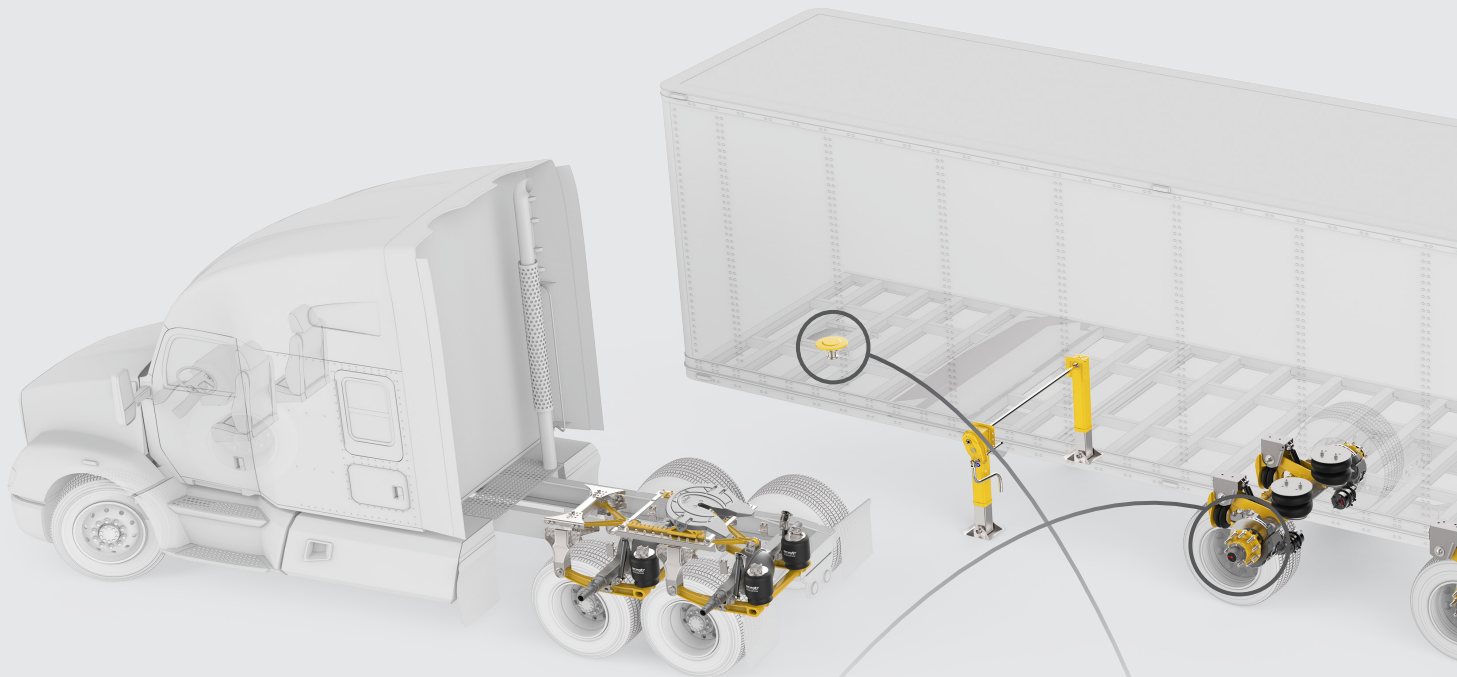


## SERVICE TOOLS (See next page for details)

| PART NUMBER                 | DESCRIPTION  |
|-----------------------------|--|
| <b>FIFTH WHEELS</b>         |  |
| TF-04229-1                  | Rebuild Stand  |
| TF-TLN-5001                 | Lock Adjustment Tool - 2"  |
| TF-TLN-2500                 | Slider Spring Compressor   |
| TF-0237                     | 2" Plug  |
| <b>KINGPINS</b>             |  |
| TF-0110                     | Kingpin Wear Gauge   |
| <b>COUPLING PRODUCTS</b>    |  |
| TF-10520                    | Pintle Hook Wear Gauge – PH-550 Series   |
| TF-10612                    | Pintle Hook Wear Gauge – PH-300, PH-300-R, PH-400-H  |
| TF-11887                    | Drawbar Eye Wear Gauge Set   |
| TF-10960                    | Pintle Hook Gap & Wear Gauge – PH-10RP with Frame Numbers XD-11047 and XE-10635, PH-30RP, PH-30SA, PH-30SB |
| TF-03147-10                 | Coupler Plunger Adjustment Tool – PH-210, PH-310, PH-410 Series  |
| TF-10521                    | Pintle Hook Wear Gauge – PH-760 & 775 Series   |
| TF-10522                    | Pintle Hook Wear Gauge – PH-T-60-AOL-8, PH-T-60-AOS-L-8, PH-30, PH-35 Series                               |
| TF-10523                    | Pintle Hook Wear Gauge – PH-T-90-A, PH-T-126-A   |
| TF-03147                    | Coupler Plunger Adjustment Tool – PH-200, PH-300, PH-400, PH-550 Series                                    |
| <b>DISC AND DRUM BRAKES</b> |  |
| 03434332802                 | Universal Disc Brake Tool Kit  |
| 03434332700Z                | Brake Adjustment Ring w/Spanner Wrench & Adapter 8/10mm – C88 & P89 Models                                 |
| 04434382800Z                | 85mm Spindle Nut Socket – C88 Models   |
| 04434386200Z                | 15mm Hub Unit Socket w/ 1/2" Drive – C88 & P89 Models  |
| 04434385900Z                | 24mm Caliper Bolt Socket w/ 3/4" Drive – C88 & P89 Models  |
| 01434104100Z                | Hub Cap Removal Lever – C88 Model  |
| 04434106800Z                | Hub Mounting Tool 88mm – C88 Model   |
| 48100745                    | Disc Brake Pad Measuring Tool  |
| <b>SUSPENSIONS</b>          |  |
| 48100538                    | Bushing Bearing Service Tool – LSZ   |
| 50544012                    | Bushing Service Tool – ADZ, AD, ART, ADL, RL, RLU, NS, and NL Models                                       |
| 50544015                    | Bushing Service Tool – CB & CBX Models   |
| XL-AS20060ST-en-US          | Trailer Suspension Ride Height Gauge   |

## SERVICE AND CHECKING TOOLS FOR SAF, HOLLAND AND NEWAY PRODUCTS

These service support tools bring added convenience to a fleet's maintenance team when they maintain and inspect SAF and NEWAY air suspensions, SAF air disc brake axles, HOLLAND fifth wheels, kingpins, pintle hooks and drawbars.



### SUSPENSION SERVICE TOOLS

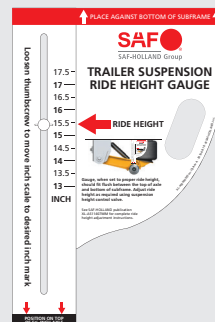


### KINGPIN WEAR GAUGE



**50544012**  
Bushings Service Tool For: ADZ,  
AD, ART, and ADL Series  
RL, RLU, NS and NL Series

**50544015**  
Bushings Service Tool  
For: CBX Series  
CB and CBY Series



**XL-AS20060ST-en-US**  
Trailer Suspension  
Ride Height Gauge  
For: CBX Series  
(5.75" Axles Only)



**TF-0110**  
Kingpin Wear Gauge  
For: 2" and 3.5" Diameter







## FIFTH WHEEL SERVICE TOOLS



**TF-04229-1**  
Rebuild Stand



**TF-0237**  
2" Plug



**TF-TLN-5001**  
for all 2" FW King PM Locks except  
FWS1, FWS2 and Simplex Models.



**TF-TLN-2500**  
Slider Spring  
Compressor - Manual  
or Air Release



## PINTLE HOOK AND DRAWBAR GAUGE



**TF-11887**  
Drawbar Eye Wear  
Gauge Set



**TF-10520**  
Pintle Hook For  
PH-550 Series



**TF-10612**  
Pintle Hook Gauge  
For PH-200/210/300/  
310/400/400-H/410/411

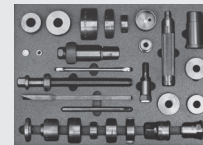
- TF-10960** – Pintle Hook Gap & Wear Gauge
- TF-03147-10** – Plunger Adjustment Tool
- TF-10521** – Pintle Hook Wear Gauge – PH-760 & 775 Series
- TF-10522** – Pintle Hook Gap & Wear Gauge – PH-T-60-AOL-8, PH-T-60-AOS-L-8, PH-30 & PH-35 Series
- TF-10523** – Pintle Hook Gap & Wear Gauge – PH-T-90-A & PH-T-126-A
- TF-03147** – Plunger Adjustment Tool – PH-200, PH-300, PH-400 & PH-550 Series



## AIR DISC BRAKE TOOLS



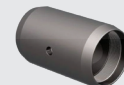
**03434332800Z**  
Universal Disc Brake Tool Kit



**03434333500**  
SBS2220H20 Disc  
Brake Tool KIT



**04434382800Z**  
85mm Spindle Nut  
Socket for C88



**04434382800Z**  
88mm Hub Mounting  
Tool for C88



**48100745**  
Disc Brake Pad  
Measuring Tool



**04434385900Z**  
24mm Caliper Bolt  
with 3/4" drive  
for C88 & P89



**04434386200Z**  
15mm Hub Unit Socket  
with 1/2" Drive  
for C88 & P89



**01434104100Z**  
Hubcap Removal Lever

**NOTE:** If the SAF-HOLLAND service tool you are looking for is not mentioned in this catalog, please contact our customer service representatives for assistance – **800.876.3929**.