



# Tank Fleet Product Solutions

Durable, Weight Optimized Product Solutions for Tank Fleets





# Fixed Frame Trailer Air Suspension Systems **CBXA AeroBeam™** Series

**CBXA AeroBeam™ Series**  
Lightweight Compact Design  
For Top Mount Models

**CAPACITIES:**

23,000 lbs. (10,433 kg)

25,000 lbs. (11,340 kg)

30,000 lbs. (13,608 kg)

- SwingAlign™ Axle Alignment System
- Optional P89 Air Disc Brake Series
- Optional SAF SC Dressed Drum Brake Series
- Optional PosiLift™ Axle Lift System

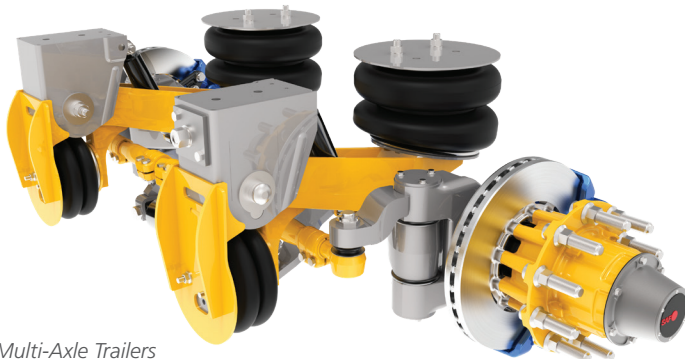


CBXAN23 Top Mount  
Shown with Optional  
P89 Plus Air Disc Brake



Featuring Haldex  
Calipers and Actuators

CBXA-SSA Self-Steer Axle model Available



For Multi-Axle Trailers  
Accommodates Ontario SPIF Regulations



Optional PosiLift™



Optional SC Series  
Dressed Drum Brake

## CBXA AeroBeam™ Series

Suspension System Weights (standard base model)	CBXAN23	CBXAS23	CBXAS25	CBXAS30
<b>Undressed Drum Brake Axle</b> (16.5" x 7" braked axle only – no slack adjusters or brake actuators)	469 lbs.	492 lbs.	524 lbs.	555 lbs.
<b>SAF SC5 Dressed Drum Brake Axle</b> (Includes steel hubs/drums, bearings, oil, slack adjusters and brake actuators)	858 lbs.*	881 lbs.*	913 lbs.*	942 lbs.*
<b>P89 Disc Brake Axle</b>	824 lbs.	847 lbs.	879 lbs.	908 lbs.

\*Optional lightweight dressed drum brake wheel ends available - 68 lbs. lighter.



For More Information See XL-AS20110SL-en-US

# Specify the **MARK V™** for the Industry's Performance Leader



## Durability for Robust Performance

### Industry-Leading Standard Features

#### Heavy-Duty Gearbox

- Gearbox with low-temperature premium lube rated for service for -65°F to 225°F

#### Double-D Crank Handle Connection

- Shaft with double-D end means a stronger more stabilized cranking connection

#### Large 5 1/8" Square Upper Tube Housing

- Large size tube with radius corners provides maximum strength to meet heavy-duty application demands

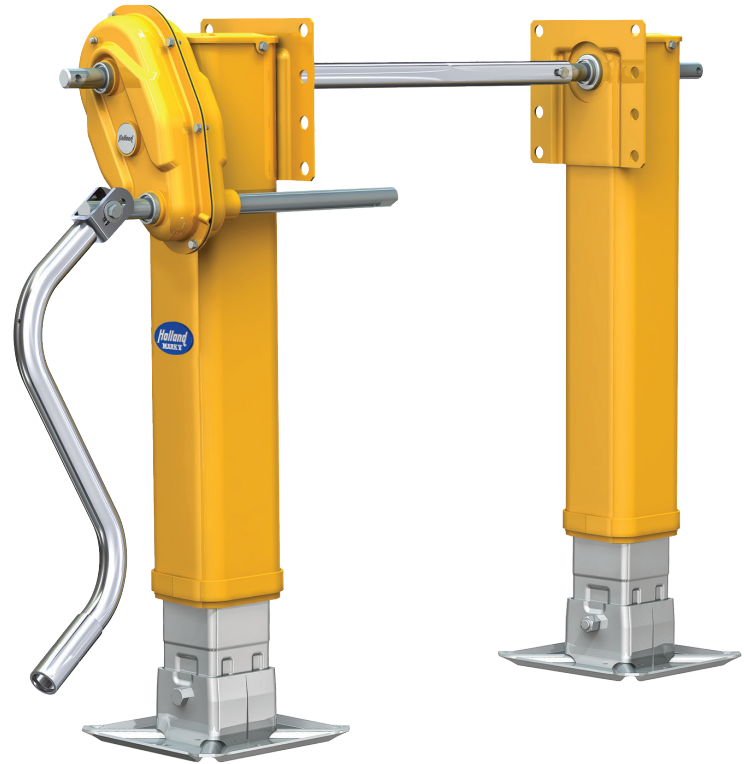
#### Heavy-duty One Piece Inner Tube

- One piece inner tube for maximum strength when the leg is in the extended position

#### Black Armour Metal Treatment



- Treatment process, unlike paint or powder coating, means the ultimate in corrosion protection with no rust creep



### Available for Severe-Duty Operations

#### MARK V™ HD

#### CAPACITY:

- 46,000 lbs. Side Load Capacity
- 62,500 lbs. Lift Capacity  
(100 ft./lbs. Input Torque)
- 200,000 lbs. Load Capacity



#### CAPACITY:

- 62,500 lbs. Lift Capacity  
(100 ft./lbs. Input Torque)
- 200,000 lbs. Load Capacity
- 32,000 lbs. Side Load Capacity

#### GEARING:

- 2.5 Turns/Inch - High Gear
- 33.7 Turns/Inch - Low Gear

#### WEIGHT:

- 150 lbs.  
(17" Travel, RCF, MRL, Reverse Shafts)

NOTE: Weight measurements are less hardware.

All specified capacities are tested in accordance with AAR M-931.

## Standard 5-Year Warranty or Premium 10-Year Warranty

HOLLAND Mark V models are available with standard or premium warranty options.

5-Year warranty covers defects in materials and workmanship.

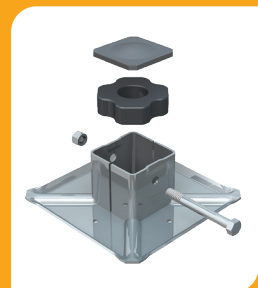
10-Year warranty\* covers defects in material and workmanship and comes standard with the NoLube™ feature, HD Bearing and RCF.

The 10-Year NoLube feature also reduces your maintenance bottom line and covers unexpected repairs and associated costs, unless the product is altered or damaged.

\*After 10 years of operation, HOLLAND legs with the 10-Year NoLube feature, require routine greasing every 6 months.

### OPTIONAL RCF FOOT AVAILABLE –

RCF technology simply transmits the shock from the entire load in compression from steel-to-rubber-to-steel. That means reduced wear and damage to the cargo, trailer, and landing gear.



Note: See warranties for details  
For 5-Year warranty see XL-LG20045WC  
For 10-Year warranty see XL-LG123-01

# The **FWAL** is the World's Lightest Fifth Wheel



Combine the proven reliability of HOLLAND Fifth Wheels with the leading technology of ALCOA forged aluminum, and the most innovative, lightweight fifth wheel in the world is created. Designed using master engineering, forging and machining technology, the FWAL is performance inspired to save weight and increase your bottom line with larger payloads.

UP TO  
**100 LBS. LIGHTER**  
vs STANDARD-DUTY EQUIVALENT



FORGED  
ALUMINUM  
TECHNOLOGY

## CAPACITY

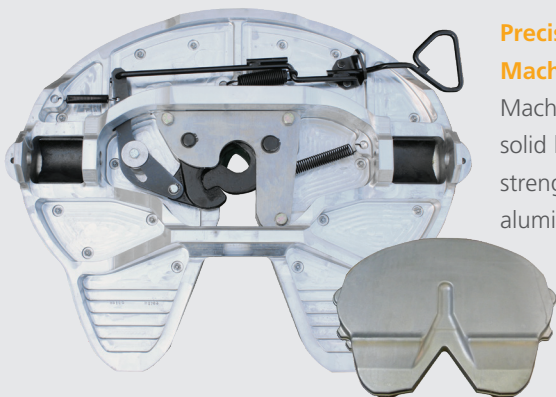
55,000 lbs. (25,000 kg)  
Maximum Vertical Load

150,000 lbs. (68,000 kg)  
Maximum Drawbar Pull

### Advanced Low Lube Plate Design

Polyethylene material molded around a honeycomb pattern steel reinforcement plate to create a wear, peel, and warp resistant lube plate.

**WHEN MAXIMIZING  
PAYLOAD MATTERS,  
SPEC THE FWAL**



### Precision Machined

Machined from solid billet of high strength forged aluminum.

## Air Release Option

Allows in-cab release of the fifth wheel locking mechanism. With just a simple pull of a dash-mounted air switch, a pneumatic cylinder on the fifth wheel will effortlessly open the locking mechanism.



**WEIGHT SAVINGS =  
INCREASED PAYLOAD**  
**WHAT DOES -100 LBS. MEAN?**

### FUEL TANKER

$$+1 \text{ gal} = -6.4 \text{ lbs.}$$

$$\text{FWAL} = -100 \text{ lbs.}$$

$$\div -6.4 \text{ lbs.}$$

$$= +15.6 \text{ gal./haul}$$

$$15.6 \times 365 \times 3$$

gal. days hauls/day

$$=$$

$$+17,082 \text{ gal./yr.*}$$

### BULK HAULER

$$\text{FWAL} = -100 \text{ lbs.}$$

$$100 \times 365 \times 2$$

lbs. days hauls/day

$$=$$

$$+73,000 \text{ lbs./yr.*}$$

\* Numbers shown are for example purposes only. Substitute in your own numbers to calculate what your yearly payload increase could be.

# Optional P89 Series Air Disc Brakes

Premium Performance  
Maintenance Free Design

Featuring the legendary INTEGRAL® rotor/hub and premium sealed bearings for reduced maintenance.

**Featuring:**

- INTEGRAL® rotor
- Premium brake chambers
- Robust parallel spindle
- 7-Year warranty (See Warranty for Complete Details)
- Long-life sealed bearings
- Haldex calipers and actuators
- Premium spindle nuts

Proven Design Quality  
with Genuine Value

All the benefits you expect from the world's leading trailer axle disc brake supplier, at a price point that makes sense for commercial fleets of all sizes.

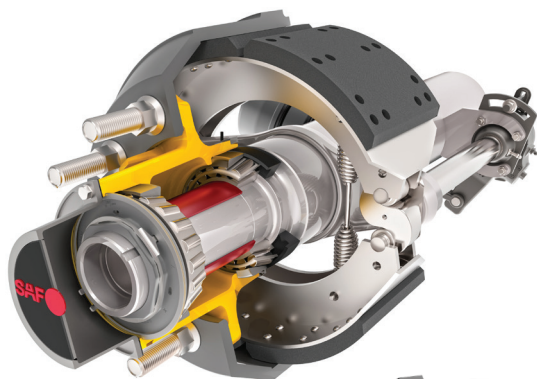
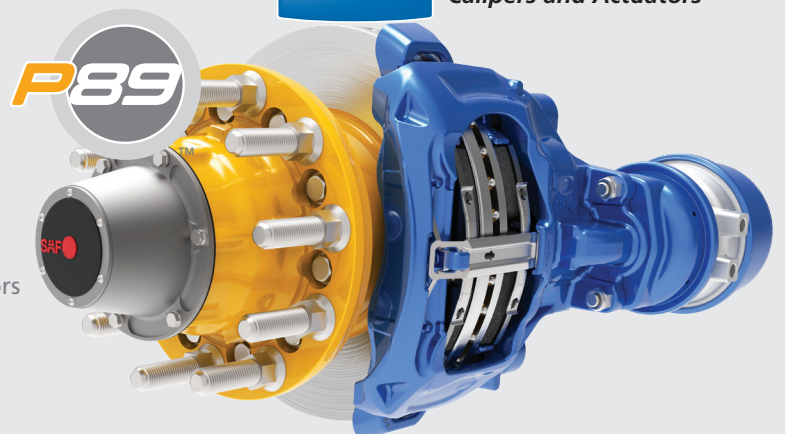
**Featuring:**

- Heavy-duty vented rotor
- Premium matched set bearings
- 5-Year warranty (See Warranty for Complete Details)
- Optional P89 PSP7 wheel end package 7-Year warranty (see warranty for complete details)
- Haldex calipers and actuators
- Parallel or taper spindle

**INDUSTRY LEADING  
AIR DISC BRAKE  
WARRANTY**  
See XL-AS11002WC warranty statement for complete details.

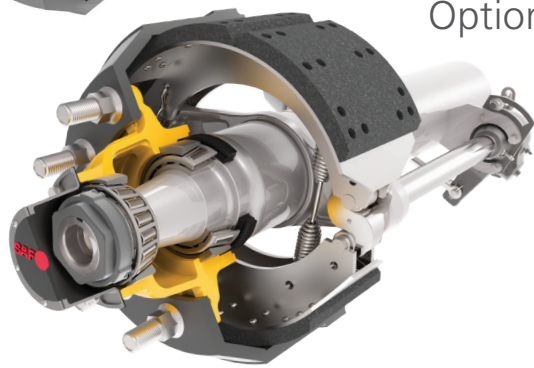


**Haldex** Featuring Haldex Calipers and Actuators



## Optional SAF SC7 Wheel End Package

Now available with dressed drum brake configuration, complete your CBXA AeroBeam Suspension/Axle system with SAF SC7 wheel ends. Featuring 16½" x 7" extended life brake linings, heavy-duty pre-adjusted hub assembly, optimized bearing spacers, advanced long lasting seals and bearings, and an extended peace of mind 7-year warranty.



## Optional SAF SC5 wheel end package

Now available with dressed drum brake configuration, complete your CBXA AeroBeam Suspension/Axle system with SAF SC5 wheel ends. Featuring 16½" x 7" extended life brake linings, premium axle spindle nuts, advanced long lasting seals and a peace of mind 5-year warranty.

# Optional Enhanced Tire Pressure Management System



*The Tire Pilot™ Plus system is now electronically controlled for enhanced fuel economy and tire life.*

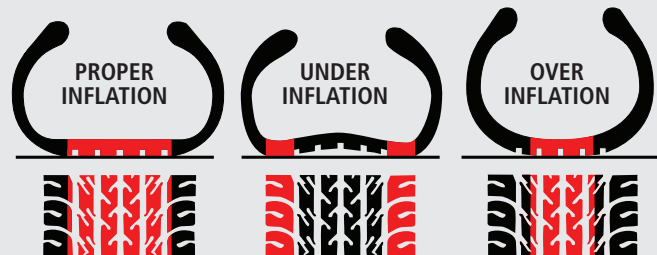


Optional Tire Pilot™ Plus not only controls pressure through inflation, but also maintains equal pressure across all wheels and features high pressure relief for overinflated tires. The robust design sets it apart from competitive designs with durable components.

- Automatically responds to small leaks caused by road hazards like nails and metal debris.
- System warning light alerts the driver ONLY when there is a need to immediately seek service.
- Diamond knurled hose connections at both hubcaps and tire valve ends allow installation and replacement without a wrench.
- The stainless steel air hose connections are ported through the sides of the hubcap and are protected between the integrated fins.
- High Pressure Relief feature maintains equal and proper pressure for all tires.
- Tire Pilot™ Plus can easily be specified on CBX and ULX Series suspensions, or is available as a simple retrofit on existing trailers.
- Can save over \$750 per year per trailer\*.



## Proper Air Pressure is Critical to Tire Life



**Full Contact**  
optimizes traction, handling and maximizes tire life.

**Outside Contact**  
accelerates irregular tread wear, increases rolling resistance, and reduces fuel efficiency by up to 2%.

**Center Contact**  
Only reduces tire life and traction. Tire is susceptible to tread damage and punctures.

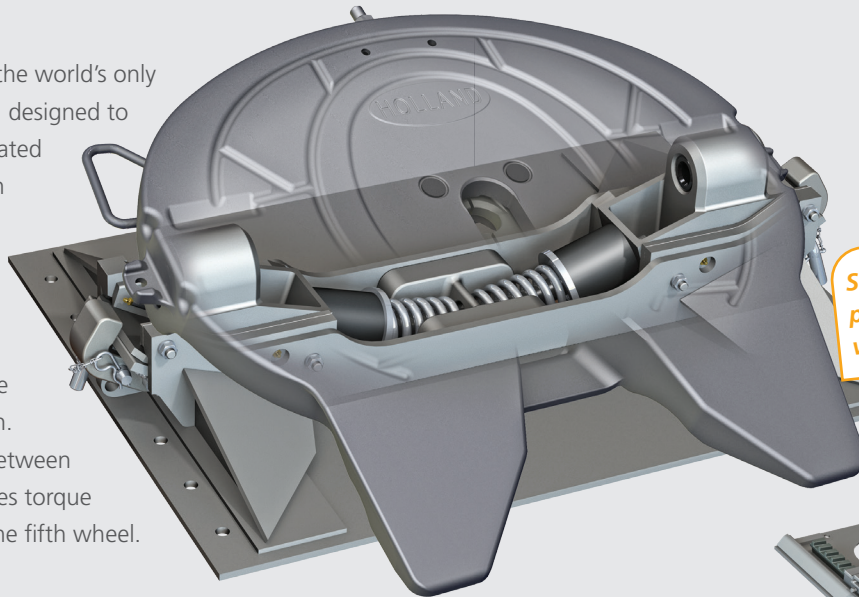
\* TMC RP235 reports the following – Tires under inflated by 10% will wear 9% to 16% faster than properly inflated tires. Under inflated tires add roll resistance that can reduce fuel economy by as much as 2%. The average fleet loses \$750 per trailer each year due to improperly inflated tires.

# Relieve Torsional Tank Trailer Stresses With **Kompensator**<sup>®</sup>

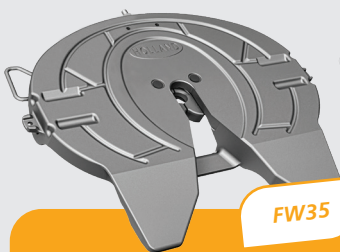
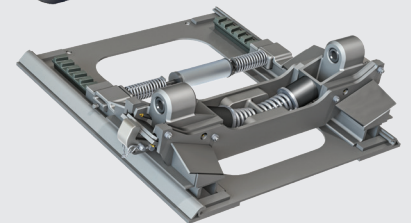


HOLLAND Kompensator<sup>®</sup> is the world's only fifth wheel mounting system designed to relieve the twisting force created between tractors and rigid in uneven terrain which can lead to frame cracks.

The patented design of the kompensator cradles the fifth wheel to allow it to slide side-to-side in uneven terrain. This allows more flexibility between tractor and trailer and reduces torque and twist transfer through the fifth wheel.

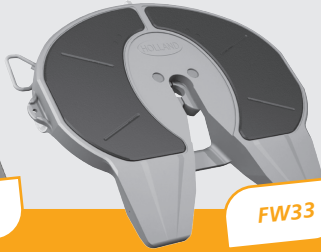


Shown with FW35 top plate – also available with FW33 and FW70



**FW35**

**FW35**  
55,000 lbs. (25,000 kg)  
Maximum Vertical Load  
150,000 lbs. (68,000 kg)  
Maximum Drawbar Pull



**FW33**

**FW33 Low Lube Technology**  
55,000 lbs. (25,000 kg)  
Maximum Vertical Load  
150,000 lbs. (68,000 kg)  
Maximum Drawbar Pull



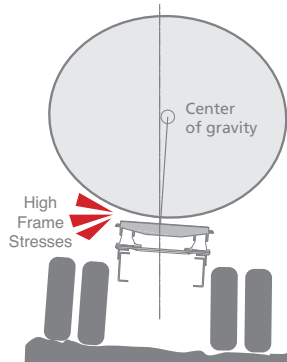
**FW70**

**FW7040**  
70,000 lbs. (32,000 kg)  
Maximum Vertical Load  
200,000 lbs. (91,000 kg)  
Maximum Drawbar Pull  
(Available as Outboard Angle Mount Only)

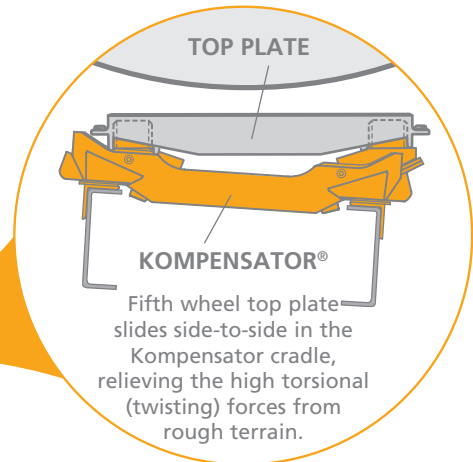
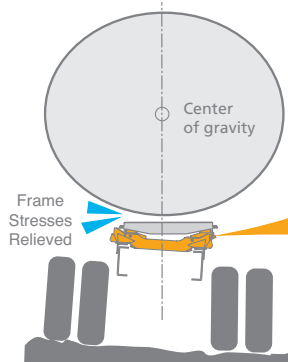
**Stationary and Sliding Models Available**

*The Kompensator<sup>®</sup> is trusted in off-highway markets for oil patches, natural gas fracking, and military applications as well as on-highway markets for tankers, and drybulks.*

**TANKER IN UNEVEN/ROUGH TERRAIN WITHOUT KOMPENSATOR**  
Center of Gravity Shifts Off Vehicle Center



**TANKER IN UNEVEN/ROUGH TERRAIN WITH KOMPENSATOR**  
Center of Gravity is Stable at Vehicle Center



## Engineering Your Road to Success

The SAF-HOLLAND® Group is one of the leading international manufacturers of suspension-related assemblies and components for trailers, trucks and buses. Our innovative products increase the efficiency, safety and environmental friendliness of commercial vehicles, contribute to the success of our customers. With around 5,500 employees worldwide, we are at the forefront of shaping the future of the transportation industry.



Trailer Axles and  
Suspension Systems



Coupling and Lifting  
Technologies



Brake Solutions and  
Air Valve Technologies



Suspensions and Components  
for Commercial Vehicles



Suspensions for  
Trucks and Buses



Trailer  
Telematics



V. ORLANDI

Coupling and Lifting  
Technologies



Trailer Axles and  
Suspensions Systems

XL-MP20021SL-en-US Rev E · 0624 · Amendments and errors reserved ©SAF-HOLLAND, Inc. SAF-HOLLAND, SAF, HOLLAND, HALDEX, NEWAY, KIL, TRAILER MASTER, V. ORLANDI, YORK, AeroBeam, SwingAlign, PosiLift, MARK V, INTEGRAL, Kompensator, Tire Pilot, NoLube, Black Armour and SAF-HOLLAND Original Parts, are trademarks of SAF-HOLLAND S.A., SAF-HOLLAND GmbH, and SAF-HOLLAND, Inc.

[safholland.com](http://safholland.com)

### SAF-HOLLAND, Inc.

Tel 800.876.3929

### SAF-HOLLAND Canada Limited

Tel 519.537.3494

Western Canada 604.574.7491

### SAF-HOLLAND Mexico

Tel 52.55.5456.8641