

CBX and CBXU Air Suspensions Checking Pivot Bolt Torque

April 2017

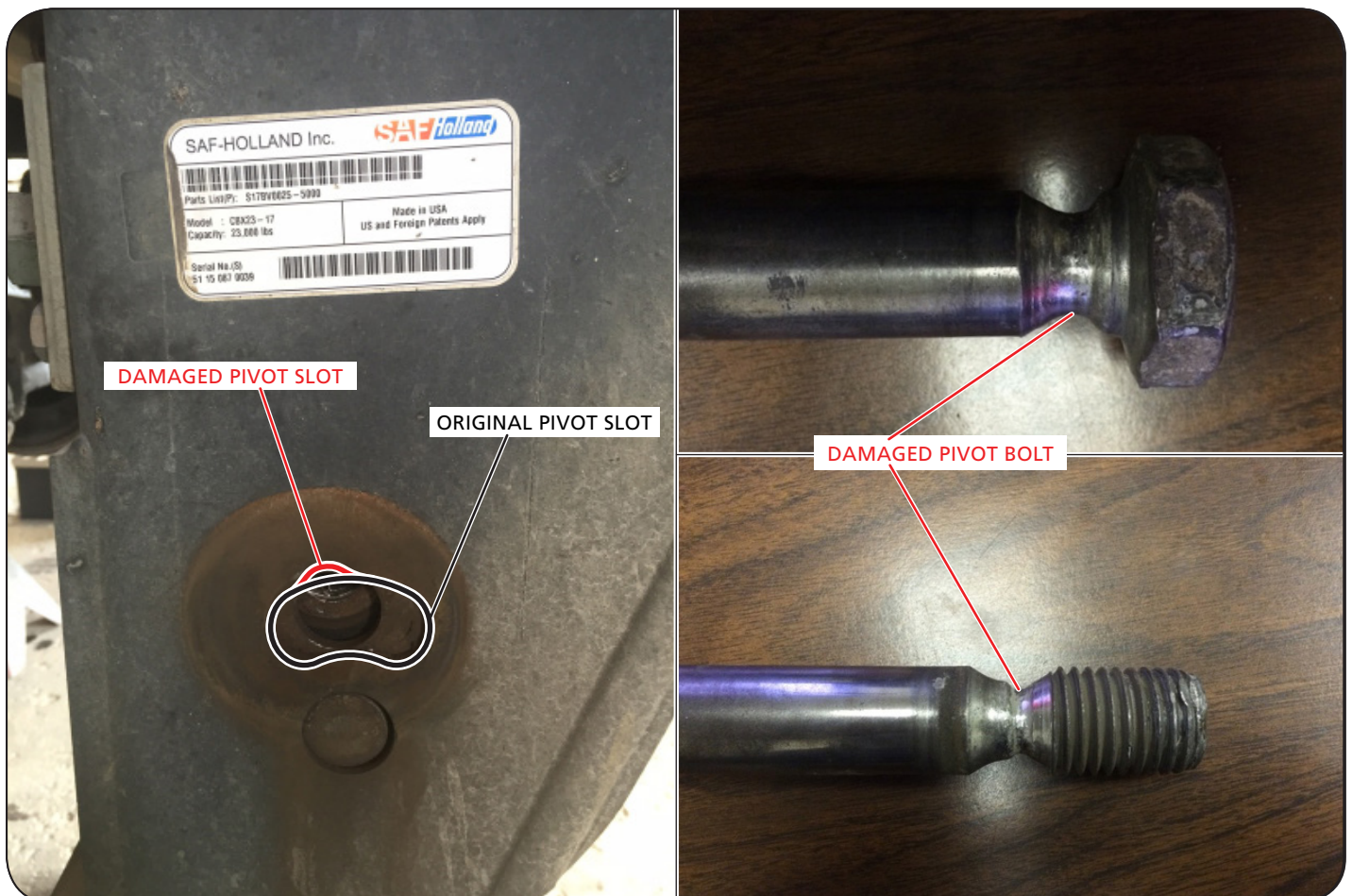
SAF-HOLLAND® recommends that the pivot connection torque be inspected during the initial three (3) month or 5,000 mile (8,000 km) service inspection.

Additionally, SAF-HOLLAND recommends that the pivot connection torque be inspected every 100,000 miles (160934 km) or during the annual service inspection, whichever comes first.

1. Before applying torque to the pivot fastener, inspect the pivot connections for signs that the connection was run loose (signs of movement between the outer wear washer and frame bracket). If signs of movement exist, remove the nut and outer washer and inspect the hanger for damage (**Figure 1**).

NOTE: SAF-HOLLAND recommends that anytime a fastener's torque is increased, the torque should be applied a minimum of three (3) times. This will insure that 100% of the applied torque was transferred to the fastener.

Figure 1



2. Proper Way to Inspect Pivot and Re-torque Connection

To properly inspect torque on the pivot connection, SAF-HOLLAND recommends using a click style or digital torque wrench capable of accurately applying 600 ft-lbs. (813 N•m) of torque.

1. Set torque wrench to 600 ft-lbs. (813 N•m).
2. Using a wrench to hold the head of the bolt stationary, tighten the pivot nut until either the torque wrench clicks at 600 ft-lbs. (813 N•m). or the digital readout is at 600 ft-lbs. (813 N•m) (**Figure 2**).

NOTE: It is important to apply torque by tightening the nut.

Figure 2

