

FIFTH WHEELS

CONVERSION INSTRUCTIONS



Manual Secondary Lock Conversion Kit RK-09615

For XA-1501 Series Top Plates or FW1560 Series Assemblies for Yard Spotter Fifth Wheels

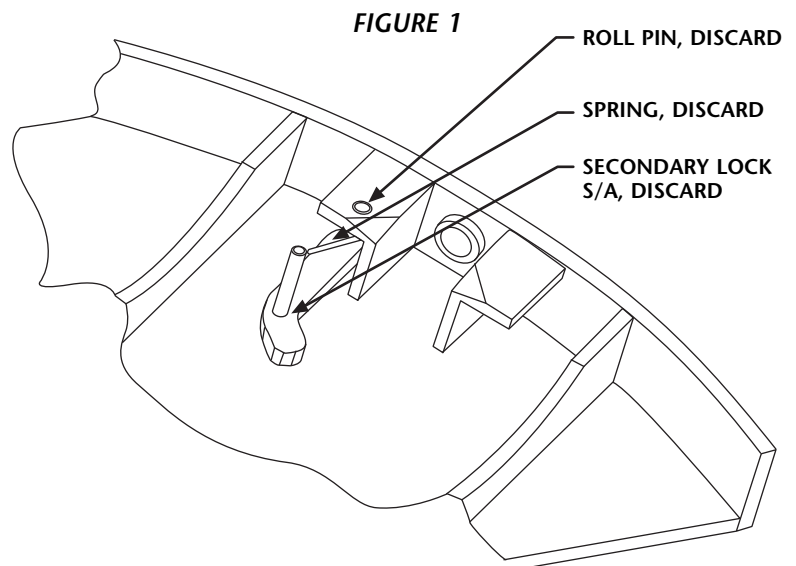


WARNING

1. All fifth wheel maintenance must be performed by a qualified service technician using proper tools and safe procedures.
2. Use only genuine Holland parts.
3. Wear safety goggles during disassembly and assembly of the fifth wheel.
4. Keep fingers away from all potential pinch points in the fifth wheel.
5. Do not weld on this product other than as directed in this manual. Do not deviate from the instructions contained in this manual. Any changes or deviations from these procedures will void all warranties, express or implied, unless prior written consent is obtained from Holland.
6. Always verify proper operation and adjust the fifth wheel following the procedures contained in this manual before placing it back in service.

EXISTING SECONDARY LOCK BAR REMOVAL PROCEDURE

1. Remove the roll pin using a hammer and punch.
2. Discard the roll pin, spring, and secondary lock S/A.



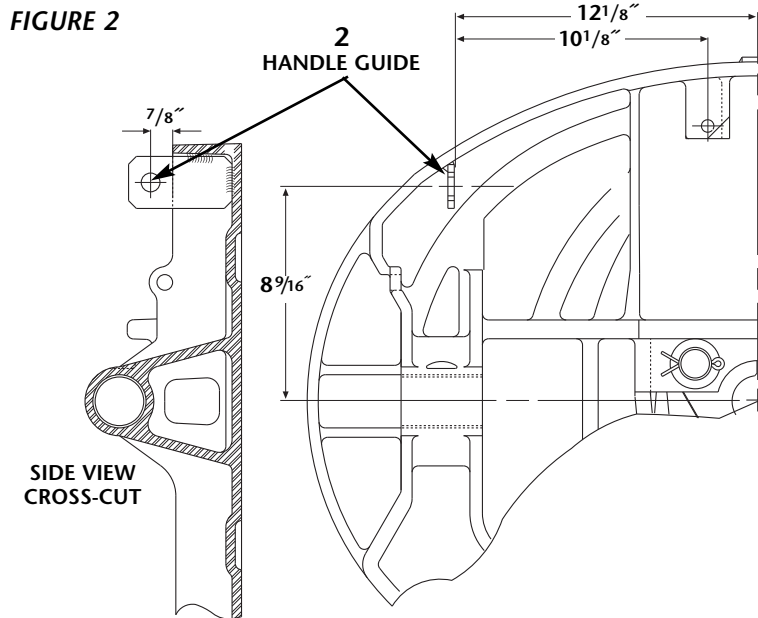
WARNING

If the fifth wheel does not operate properly, **DO NOT USE IT!** Either disassemble and repeat rebuilding procedures or contact your nearest

Holland representative for assistance. Locations and phone numbers can be found on page 4. Never use a fifth wheel that does not operate properly.

SECONDARY LOCK INSTALLATION PROCEDURE

1. Position the **NEW** handle guide (*ITEM 2*) next to the inside skirt of the fifth wheel casting and weld it in place, as shown in *FIGURE 2*.



WARNING

When welding, use a procedure and filler metal. This assures a

sound, good quality weld that protects the welding operator and others.

Overwelding may cause distortion or damage. Underwelding may not develop sufficient strength. An AWS E70XX or E60XX filler metal, used in conjunction with either GMAW (gas shielded solid wire), FCAW (gas shielded flux core wire) or SMAW (AC or DC stick) is recommended.

2. Pass the "S" bend of the manual secondary lock release handle S/A (*ITEM 1*) through the hole in the handle guide.
3. Pass the "S" bend of the release handle through the small hole in the secondary lock bar (*ITEM 3*), as shown in *FIGURE 3*.
4. Start the roll pin (*ITEM 5*) into the hole in the top plate opposite the cam plate attachment bolt. Assemble the secondary lock bar (*ITEM 3*) to the torsion spring (*ITEM 4*), as shown in *FIGURE 4*.
5. Drive the roll pin (*ITEM 5*) through the spring and lock until flush with the casting. Check the spring for tension and lock for free movement.

FIGURE 3

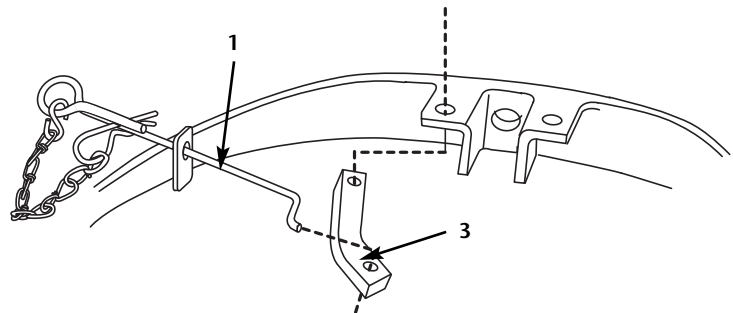
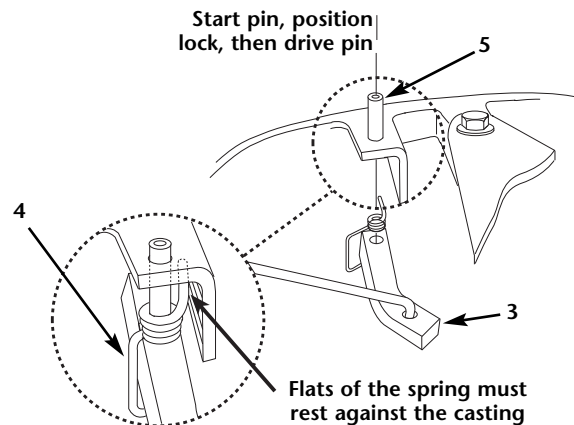


FIGURE 4



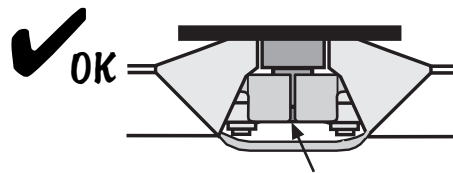
OPERATION CHECK

Before you use your fifth wheel, you must verify that it is operating properly.

Open and close the fifth wheel at least (3) times using a Holland lock tester.

Each time you close the locks, verify that the locks have closed completely around the kingpin.

The fifth wheel is now ready for operation.



Locks are completely closed around the kingpin.

FIGURE 5

SECONDARY LOCK OPERATION



WARNING

All elevating fifth wheels — when towing trailers in the elevated position — are less stable than conventional tractor-trailers and are sensitive to speed and maneuvers.

This unit is not recommended for operation on public streets and

highways. When such trailer moves are necessary, the manual secondary lock on the fifth wheel must be engaged (see below), and the fifth wheel must be in the **down** position.

PUBLIC STREET OR HIGHWAY OPERATION: SECONDARY LOCK ENGAGED

If operation on public streets or highways is required, the manual secondary lock must be engaged. To engage the secondary lock, remove the hairpin clip on the secondary lock handle allowing the secondary lock to pivot behind the locking yoke as shown in *Figure 6*.

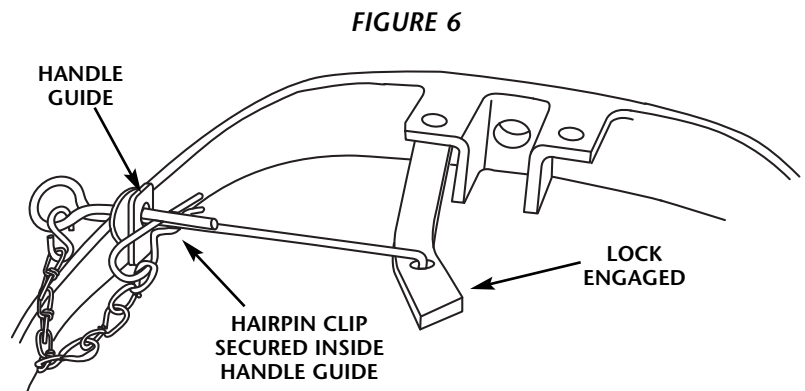


FIGURE 6

YARD SPOTTING OPERATION: MANUAL SECONDARY LOCK DISENGAGED

To disengage the manual secondary lock, remove the hairpin clip on the secondary lock handle, pull the secondary lock handle outward to disengage the secondary lock. While holding the handle out, re-insert the hairpin clip into the hole in the handle. See *Figure 7*.

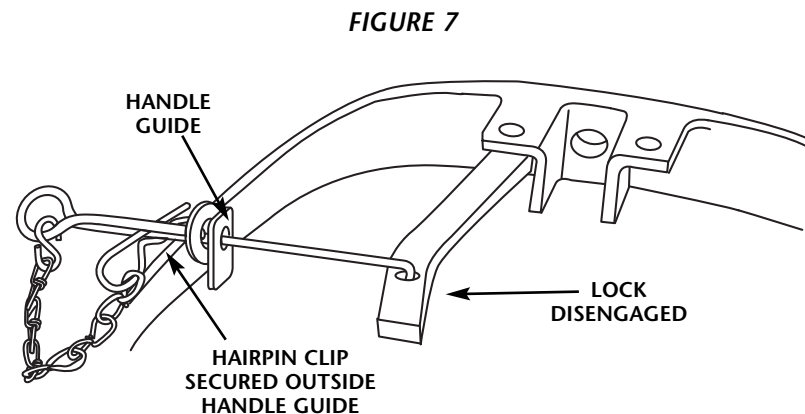
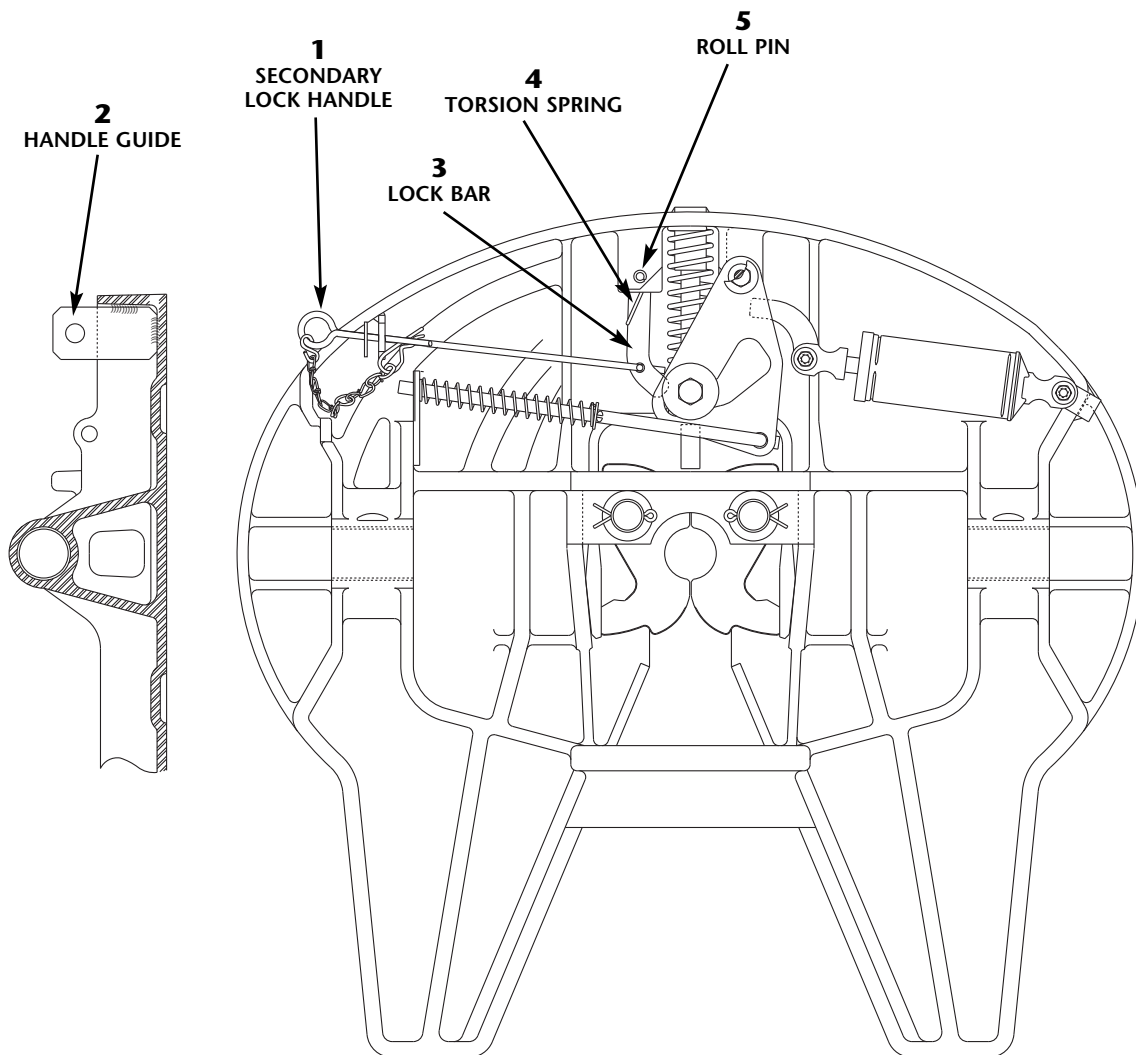


FIGURE 7

RK-09615 PARTS SCHEMATIC AND DESCRIPTION



ITEM NO.	PART NO.	NO. REQ'D.	PART NAME
1	XA-3546	1	Secondary Lock Handle S/A
2	XA-09615	1	Handle Guide
3	XA-3528	1	Lock Bar
4	XB-2149	1	Torsion Spring
5	XB-21-S-500-2750	1	Roll Pin

Copyright © September 2002 • The Holland Group, Inc.

Holland USA, Inc. Facilities:

Denmark, SC Warrenton, MO
 Dumas, AR Whitehouse Station, NJ
 Holland, MI Wylie, TX
 Muskegon, MI

Ph: 888-396-6501 Fax: 800-356-3929

Holland International, Inc.

Holland, MI
 Phone: 616-396-6501
 Fax: 616-396-1511

Holland Hitch of Canada, Ltd.

Woodstock, Ontario • Canada
 Phone: 519-537-3494
 Fax: 800-565-7753

Holland Equipment, Ltd.

Norwich, Ontario • Canada
 Phone: 519-863-3414
 Fax: 519-863-2398

Holland Hitch Western, Ltd.

Surrey, British Columbia • Canada
 Phone: 604-574-7491
 Fax: 604-574-0244