



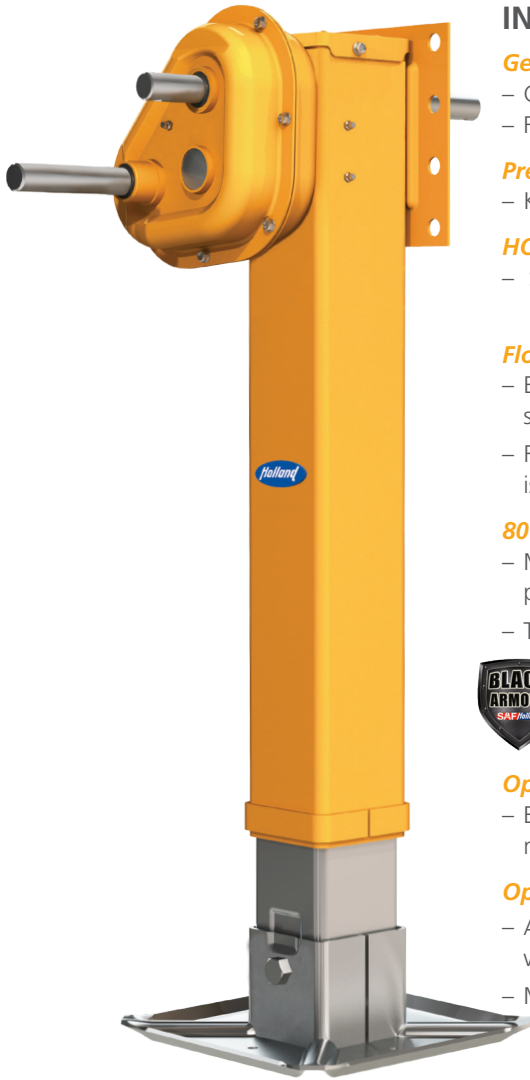
ATLAS™ Series

Two Industry Solutions with Proven
Durability and Lifting Performance



HOLLAND ATLAS™ Series

Landing Gear



INDUSTRY-LEADING STANDARD FEATURES

Gearbox Design with enhanced seals

- Constant mesh gearing design for durability and long life
- Features a rubber gasket seal

Premium Shaft Seals

- Keeps contaminants out and grease in

HOLLAND True Lube Grease

- Specifically formulated for HOLLAND landing legs to not prematurely harden or leak

FloatingNut™ with Twin-Bulkhead Design

- Exclusive FloatingNut feature protects against elevating screw damage, assuring smooth cranking performance
- Reinforced Twin-Bulkhead design for added strength when leg is fully extended

80 ksi Yield High-Strength Steel Leg Tube Material

- Maximum strength upper and lower tube housing for robust performance
- The industry's strongest and lightest weight tube housing material



Black Armour® Metal Treatment

- Treatment process, unlike paint or powder coating, means the ultimate in corrosion protection with no rust creep

Optional RCF Removable Cushion Foot

- Built-in rubber cushion protects the landing gear leg and internal mechanisms from load impact shock

Optional NoLube™ Elevating Screw

- Automatically keeps the elevating screw lubricated and working smoothly
- Manually greasing the landing gear assembly is not required for 10 years



ATLAS™ 55 LIFT CAPACITY 55,000 LBS.



CAPACITIES

55,000 lbs. Lift Capacity
(100 ft./lbs. Input Torque)
170,000 lbs. Load Capacity
30,000 lbs. Side Load Capacity

GEARING

4.5 Turns Per Inch - High Gear
38.7 Turns Per Inch - Low Gear

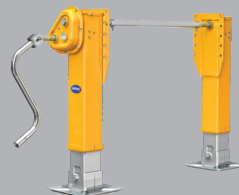
WEIGHT 150 lbs.

(17" Travel, RCF, MRL, Reverse Shafts)

NOTE: Weight measurements are less hardware.

All specified capacities are tested in accordance with AAR M-931.

ATLAS™ 65 LIFT CAPACITY 65,000 LBS.



CAPACITIES

65,000 lbs. Lift Capacity
(100 ft./lbs. Input Torque)
170,000 lbs. Load Capacity
34,000 lbs. Side Load Capacity

GEARING

4.5 Turns Per Inch - High Gear
38.7 Turns Per Inch - Low Gear

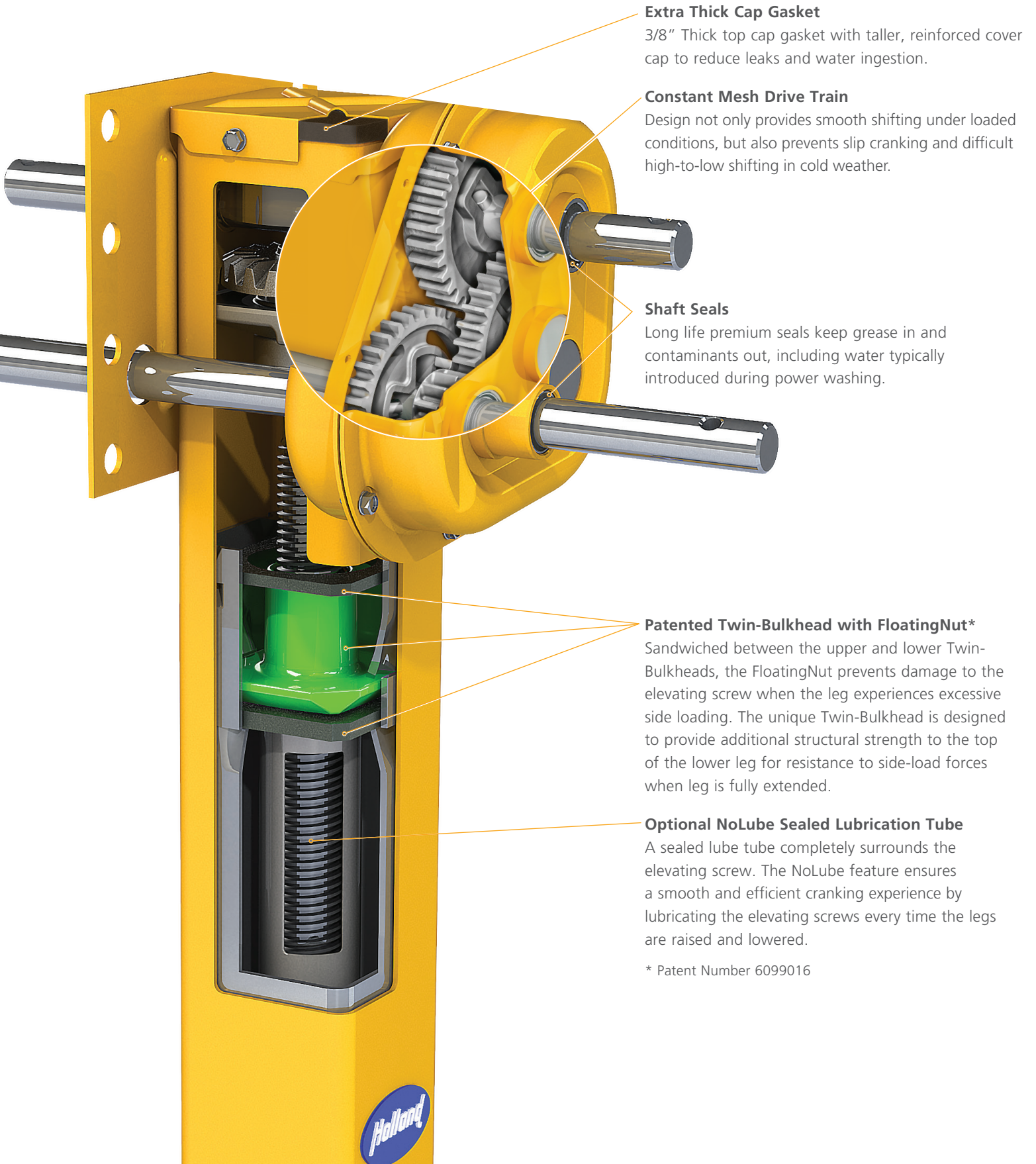
WEIGHT 176 lbs.

(17" Travel, RCF, MRL, Reverse Shafts)

NOTE: Weight measurements are less hardware.

All specified capacities are tested in accordance with AAR M-931.

Design Enhanced Gearbox for Superior Performance



Extra Thick Cap Gasket

3/8" Thick top cap gasket with taller, reinforced cover cap to reduce leaks and water ingestion.

Constant Mesh Drive Train

Design not only provides smooth shifting under loaded conditions, but also prevents slip cranking and difficult high-to-low shifting in cold weather.

Shaft Seals

Long life premium seals keep grease in and contaminants out, including water typically introduced during power washing.

Patented Twin-Bulkhead with FloatingNut*

Sandwiched between the upper and lower Twin-Bulkheads, the FloatingNut prevents damage to the elevating screw when the leg experiences excessive side loading. The unique Twin-Bulkhead is designed to provide additional structural strength to the top of the lower leg for resistance to side-load forces when leg is fully extended.

Optional NoLube Sealed Lubrication Tube

A sealed lube tube completely surrounds the elevating screw. The NoLube feature ensures a smooth and efficient cranking experience by lubricating the elevating screws every time the legs are raised and lowered.

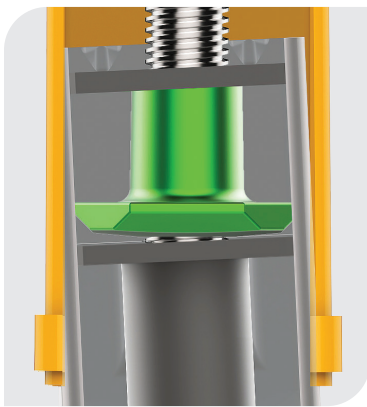
* Patent Number 6099016



HOLLAND Exclusive Floatingnut Feature for Longer Service Life

Cranking a landing gear with a bent elevating screw can be an extremely unpleasant experience. Unlike competitive landing gear, the ATLAS has an exclusive special feature to prevent a bent elevating screw from happening.

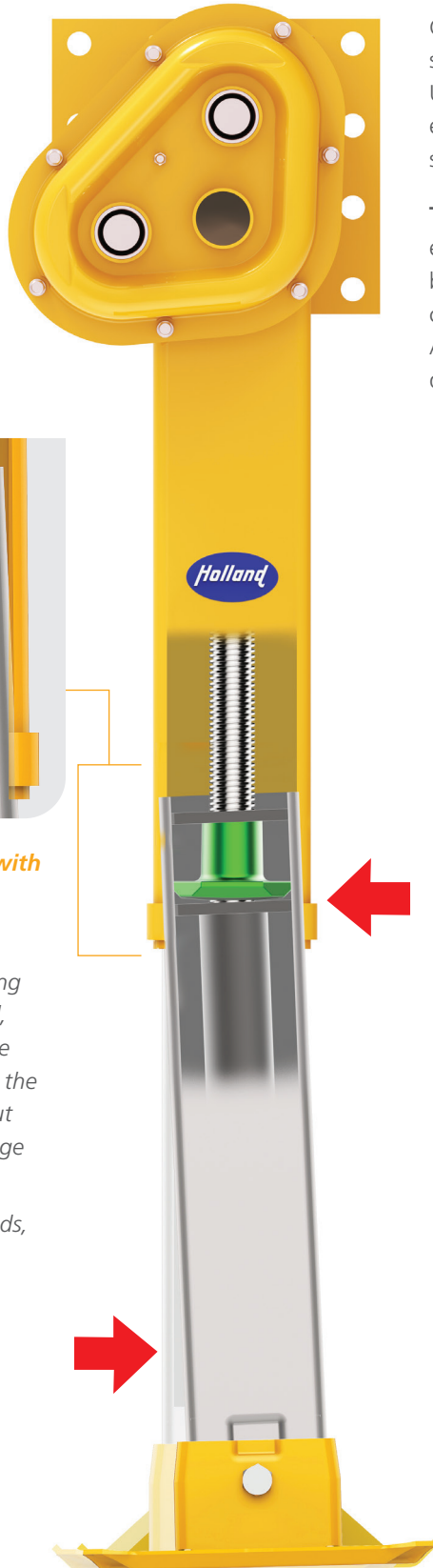
The FloatingNut feature works to protect the elevating screw from damage that can be caused by excessive side-load forces experienced during coupling, uncoupling, and container loading. A bent screw leads to poor cranking performance due to binding.



Twin-Bulkhead design with the FloatingNut feature

When excessive side-load forces occur on the landing gear when fully extended, the FloatingNut allows the lower leg to move within the upper leg housing without causing permanent damage to the elevating screw.

The unique Twin-Bulkheads, above and below the FloatingNut, provide additional structural strength to the top of the lower leg tube.



STANDARD 5-YEAR WARRANTY OR EXTENDED 10-YEAR WARRANTY

HOLLAND ATLAS 55 and ATLAS 65 models are available with standard or extended warranty options.

5-Year warranty covers defects in materials and workmanship.

The 10-Year NoLube feature also reduces your maintenance bottom line and covers unexpected repairs and associated costs, unless the product is altered or damaged.

Recommended protection practices for your HOLLAND landing gear include routine greasing at 6 month intervals. After 10 years of operation, HOLLAND legs with the 10-Year NoLube feature, require routine greasing every 6 months.

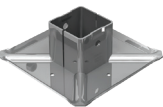
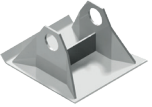
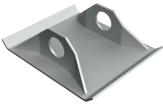

Note: See warranties for details

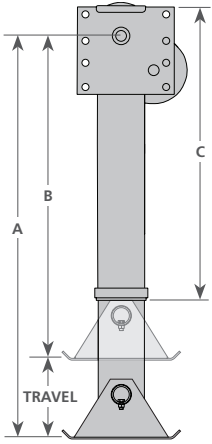
For 5-year warranty see XL-LG20045WC

For 10-year warranty see XL-LG123-01

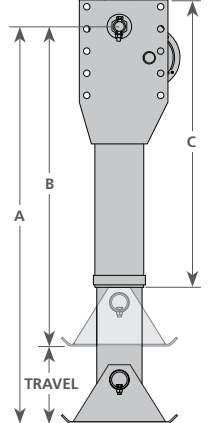
**Warranty provides lifetime coverage for defects in materials and workmanship. Requires Removeable Cushion Foot and 10-year NoLube option (See warranty XL-LG11395WC-en-US for details)*

ATLAS™ Specifications

ATLAS 55				ATLAS 65			
DIMENSIONS	EXTENDED LENGTH (A)	RETRACTED LENGTH (B)	UPPER LEG (C)	EXTENDED LENGTH (A)	RETRACTED LENGTH (B)	UPPER LEG (C)	
REMOVABLE CUSHION FOOT							
	15.5" Travel	43.75	28.25	26.56	43.91	28.41	26.56
	17" MRL Travel	46.75	29.75	28.06	46.91	29.91	28.06
	17" Travel	48.75	31.75	30.06	48.91	31.91	30.06
	19" Travel	51.38	32.38	30.06	51.54	32.54	30.06
4.5" SANDSHOE							
	15.5" Travel	45.19	29.69	26.56	45.35	29.85	26.56
	17" Travel	48.19	31.19	28.06	48.35	31.35	28.06
	19" Travel	52.69	33.69	30.06	52.85	33.85	30.06
2" SANDSHOE							
	15.5" Travel	42.69	27.19	26.56	42.85	27.35	26.56
	17" Travel	45.69	28.69	28.06	45.85	28.85	28.06
	19" Travel	50.19	31.19	30.06	50.35	31.35	30.06
LOW PROFILE RCF							
	15.5" Travel	43.74	28.24	26.56	43.90	28.40	26.56
	17" MRL Travel	45.74	28.74	28.06	45.90	28.90	28.06
	17" Travel	48.74	31.74	30.06	48.90	31.90	30.06
	19" Travel	51.34	32.34	30.06	51.50	32.50	30.06



ATLAS 55



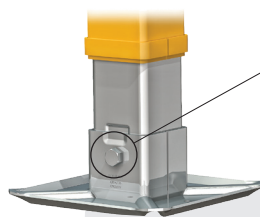
ATLAS 65

NOTE: All landing gear accessories and footwear options can be found in the Aftermarket Landing Gear Optional Parts and Accessories Guide (XL-AM10013PM).
 ATLAS 55 & 65 technical dimensions and ordering code can be found in the HOLLAND Landing Gear Parts Manual (XL-LG11389PM).

Optional RCF (Removable Cushion Foot) For Atlas 55 and Atlas 65 Models

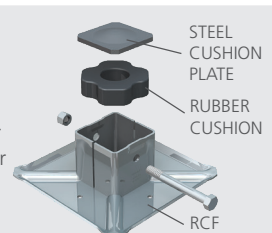
HOLLAND landing gear are available with an optional, patented removable cushion foot (RCF) for the ATLAS 55 and 65 landing gear models. A proven, innovative landing gear foot that has won the respect and recognition of our industry.

The RCF footwear option utilizes a heavy duty rubber cushion that absorbs 50% more shock than conventional footwear.



The RCF feature allows easy removal of a damaged foot by simply extracting a single bolt. No cutting or welding is required.

RCF technology simply transmits the shock from the entire load in compression from steel-to-rubber-to-steel. That means reduced wear and damage to the cargo, trailer, and landing gear.



Engineering Your Road to Success

The SAF-HOLLAND® Group is one of the leading international manufacturers of suspension-related assemblies and components for trailers, trucks and buses. Our innovative products increase the efficiency, safety and environmental friendliness of commercial vehicles, contribute to the success of our customers. With around 5,500 employees worldwide, we are at the forefront of shaping the future of the transportation industry.



Trailer Axles and
Suspension Systems



Coupling and Lifting
Technologies



Brake Solutions and
Air Valve Technologies



Suspensions and Components
for Commercial Vehicles



Suspensions for
Trucks and Buses



Trailer
Telematics



V.ORLANDI
Coupling and Lifting
Technologies



Trailer Axles and
Suspensions Systems

safholland.com

SAF-HOLLAND, Inc.
Tel 800.876.3929

SAF-HOLLAND Canada Limited
Tel 519.537.3494
Western Canada 604.574.7491

SAF-HOLLAND Mexico
Tel 52.55.5456.8641